

COPY

Jones County Iowa
Marie Krutzfield, Recorder
Fee Book 2010 3496

12/14/2010 @1119AM
ZSC SEC COR CERT
Book: Page: # Pages: 1
Total Fees: \$0.00

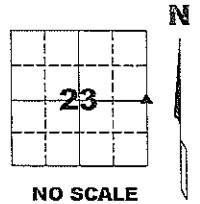
PREPARED BY
CLARENCE J. WALTON, JONES COUNTY ENGINEER'S OFFICE, 19501 HWY. 64, ANAMOSA, IOWA, 52205 (319) 462-3785

UNITED STATES PUBLIC LAND
SURVEY CORNER CERTIFICATE
LAND SURVEY MONUMENTS SITUATED IN SECTION 23, TOWNSHIP 83 NORTH,
RANGE 4 WEST OF THE 5TH PRINCIPAL MERIDIAN, JONES COUNTY, IOWA.

PROJECT: M-1511

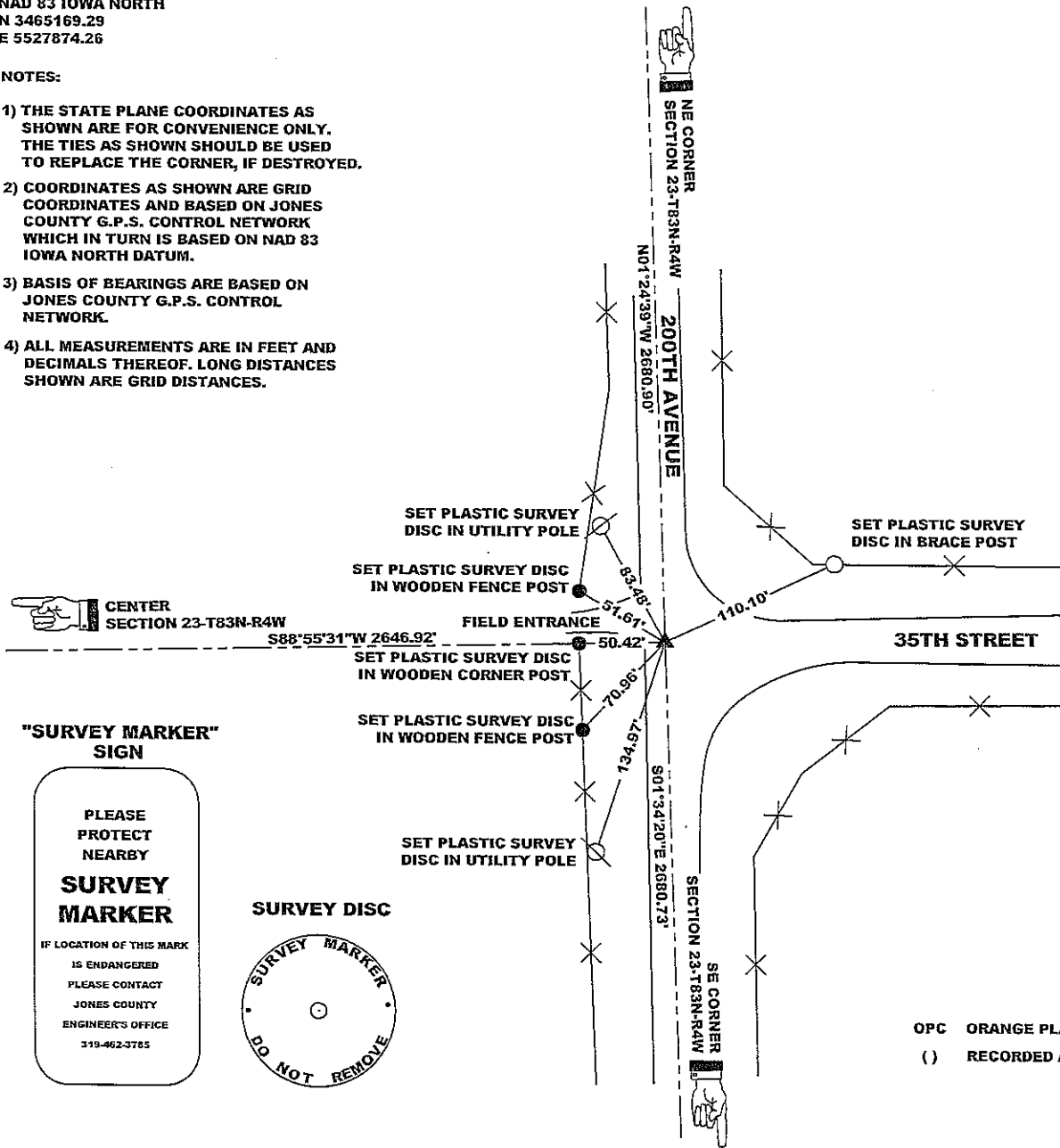
STATE PLANE COORDINATE
NAD 83 IOWA NORTH
N 3465169.29
E 5527874.26

CORNER SECTION TOWNSHIP RANGE
E 1/4 CORNER 23 T83N R4W



NOTES:

- 1) THE STATE PLANE COORDINATES AS SHOWN ARE FOR CONVENIENCE ONLY. THE TIES AS SHOWN SHOULD BE USED TO REPLACE THE CORNER, IF DESTROYED.
- 2) COORDINATES AS SHOWN ARE GRID COORDINATES AND BASED ON JONES COUNTY G.P.S. CONTROL NETWORK WHICH IN TURN IS BASED ON NAD 83 IOWA NORTH DATUM.
- 3) BASIS OF BEARINGS ARE BASED ON JONES COUNTY G.P.S. CONTROL NETWORK.
- 4) ALL MEASUREMENTS ARE IN FEET AND DECIMALS THEREOF. LONG DISTANCES SHOWN ARE GRID DISTANCES.



"SURVEY MARKER" SIGN

PLEASE PROTECT NEARBY SURVEY MARKER
IF LOCATION OF THIS MARK IS ENDANGERED PLEASE CONTACT JONES COUNTY ENGINEER'S OFFICE 319-462-3785

SURVEY DISC

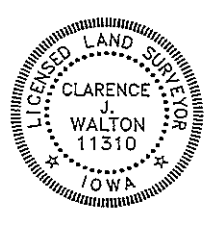


OPC ORANGE PLASTIC CAP
() RECORDED AS

PREVIOUSLY RECORDED IN BOOK N/A, PAGE N/A

MONUMENT DESCRIPTION AND HOW ESTABLISHED PER TIES IN FIELD BOOK 257, PAGE 6 IN THE JONES COUNTY, IOWA ENGINEER'S OFFICE, FOUND 1-1/4" O.D. GAS PIPE 3" BELOW PRESENT ROAD SURFACE. TIES STATE PIPE IS 4'-2" IN LENGTH AND IS DIRECTLY ATOP CONCRETE MONUMENT.

FIELD BOOK MISC. 2009-2010, PAGE 141. DATE OF SURVEY: 11/19/10



I hereby certify that this land surveying document and the related survey work was performed by me or under my direct personal supervision and that I am a duly registered Land Surveyor under the laws of the State of Iowa.
Signed: *Clarence J. Walton* 12/9/10
Clarence J. Walton, L.S.
My Registration Renewal Date is December 31, 2011
Iowa License Number 11310
Pages or sheets covered by this seal: 1 of 1.

- A. THERE IS NO CERTIFICATE FOR THE CORNER ON FILE WITH THE RECORDER OF THE COUNTY IN WHICH THE CORNER IS LOCATED.
- B. THE CORNER MONUMENT HAS BEEN REPLACED OR MODIFIED.
- C. THE SURVEYOR IN RESPONSIBLE CHARGE OF THE LAND SURVEYING ACCEPTS A CORNER POSITION THAT DIFFERS FROM THAT SHOWN IN THE PUBLIC RECORDS OF THE COUNTY IN WHICH THE CORNER IS LOCATED.
- D. THE REFERENCE TIES REFERRED TO IN AN EXISTING PUBLIC RECORD NO LONGER EXIST.

CORNERS TO BE INDEXED

CORNER	SECTION	TOWNSHIP	RANGE
E 1/4 CORNER	23	83N	4W
W 1/4 CORNER	24	83N	4W

JONES COUNTY ENGINEER'S OFFICE



19501 HWY. 64, ANAMOSA, IOWA 52205
(319) 462-3785

2000 0275

FILED
RECORDERS OFFICE
JONES COUNTY IOWA

00 JAN 24 AM 11:31

MARIE KRUTZFIELD
RECORDER 6.00 PD

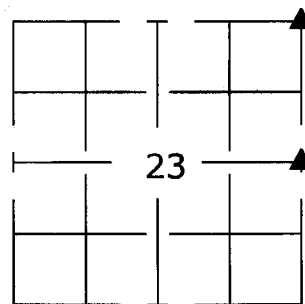
Greenfield

United States Public Land Survey Corner Certificate

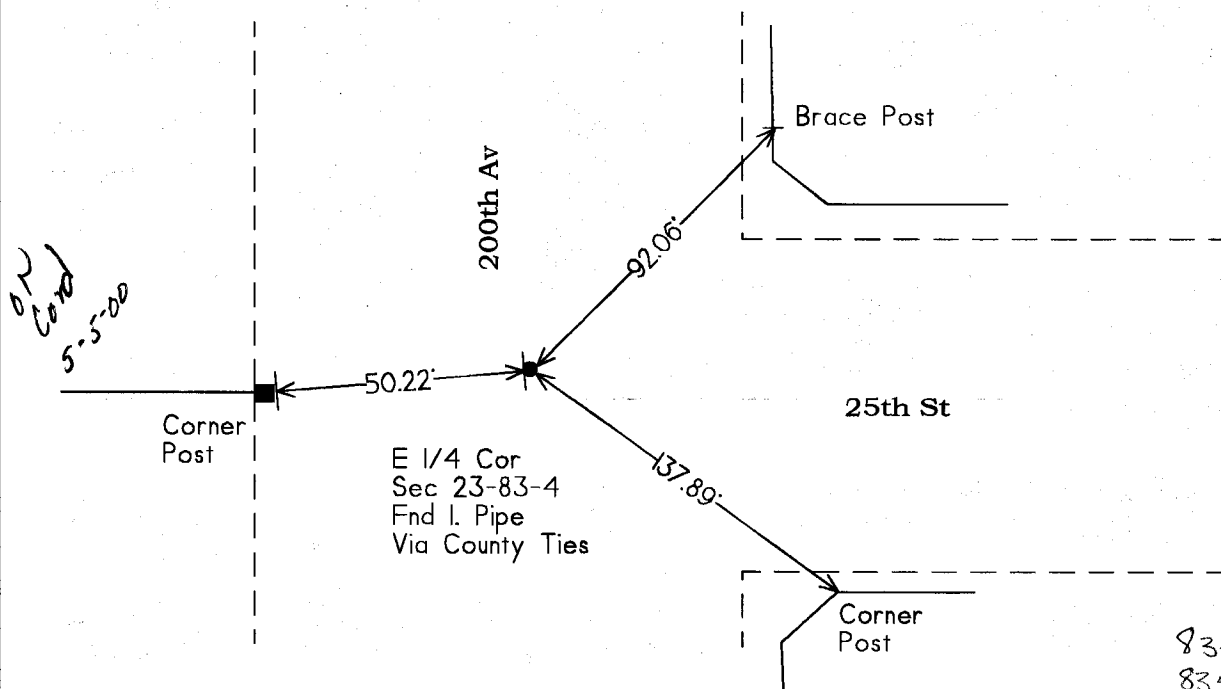
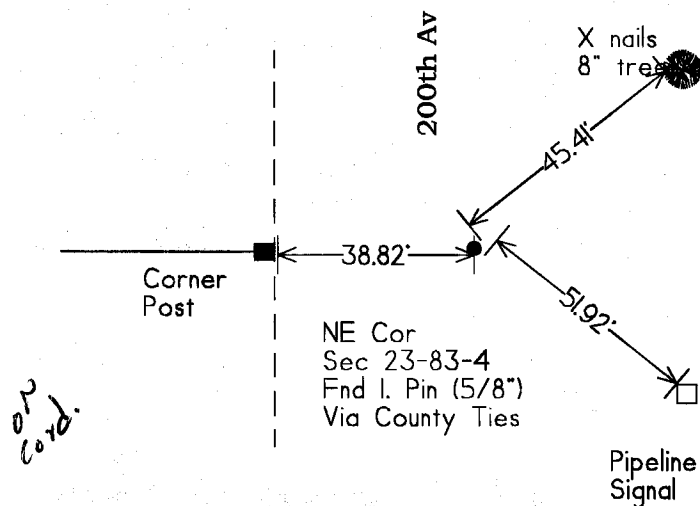
Land survey corner in Section 23 Township 83 North,
Range 4 West of the 5th P.M. Jones County, Iowa.

There is no other certificate on record at this date,
for these corners. To the best of my knowledge.

No Scale



Section

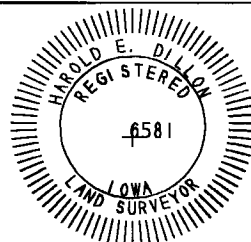


83423e-012000
83423e-012000

Certification

I hereby certify that this plat and survey was made by me or
under my direct supervision and that I am a duly Registered Land
Surveyor under the laws of the State of Iowa.

Harold E. Dillon 1/20/00
Harold E. Dillon Iowa Reg. 6581 My certification expires 12/31/2000



DILLON SURVEYING Co
CORALVILLE, IA 52241
(319) 351-5647

Page 1 of 1.
Job# 9151