

COPY

Jones County Iowa
Marie Krutzfield, Recorder
Fee Book 2010 3640

12/22/2010 @1209PM
ZSC SEC COR CERT
Book: Page: # Pages: 1
Total Fees: \$0.00

PREPARED BY
CLARENCE J. WALTON, JONES COUNTY ENGINEER'S OFFICE, 19501 HWY. 64, ANAMOSA, IOWA, 52205 (319) 462-3785

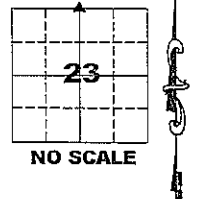
AMENDED UNITED STATES PUBLIC LAND SURVEY CORNER CERTIFICATE

LAND SURVEY MONUMENTS SITUATED IN SECTION 23, TOWNSHIP 83 NORTH,
RANGE 4 WEST OF THE 5TH PRINCIPAL MERIDIAN, JONES COUNTY, IOWA.

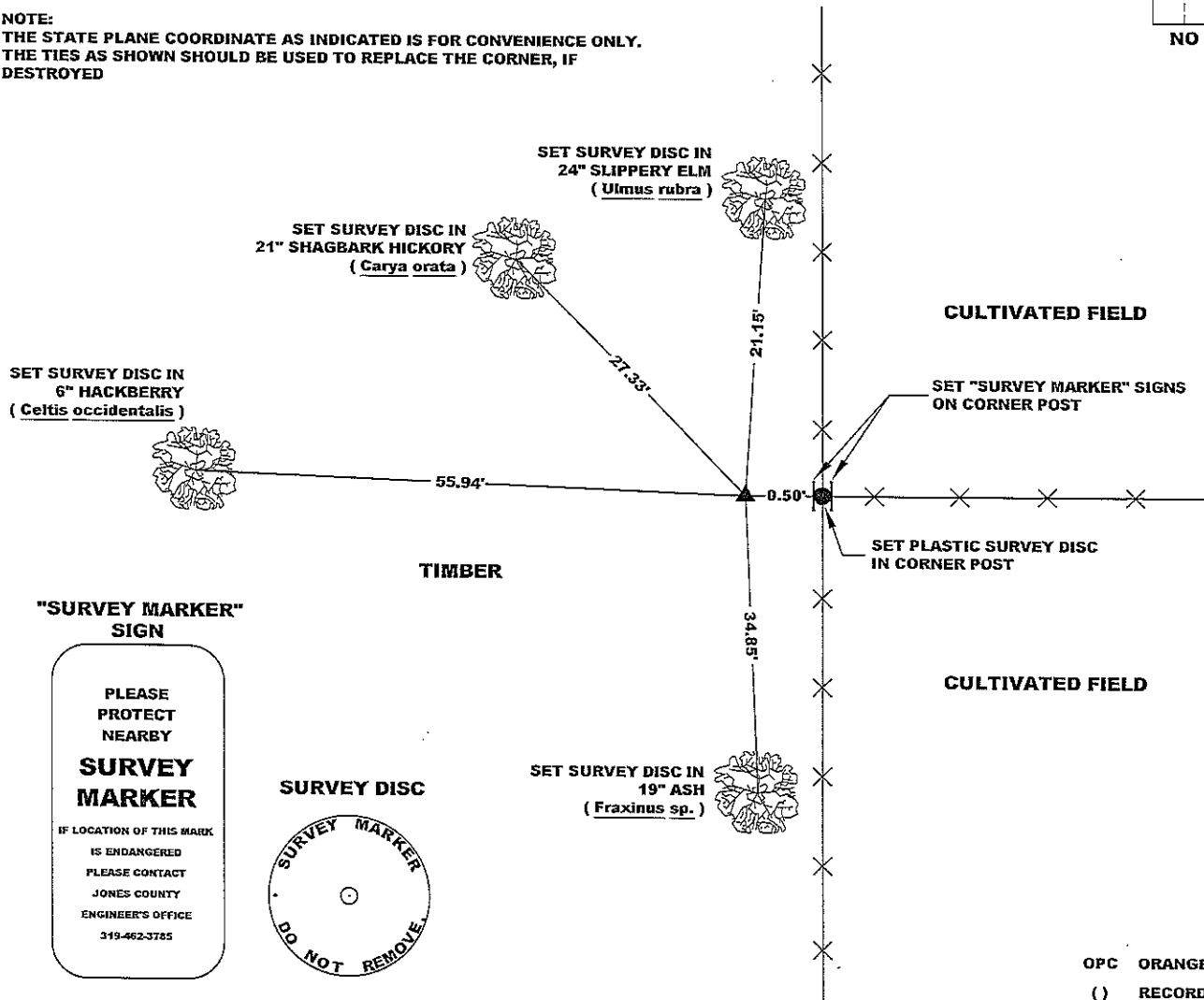
PROJECT: M-1211

STATE PLANE COORDINATE
NAD 83 IOWA NORTH
N 3467804.40 (N 3467840.07)
E 5525168.88 (E 5525191.99)

CORNER SECTION TOWNSHIP RANGE
N 1/4 CORNER 23 T83N R4W



NOTE:
THE STATE PLANE COORDINATE AS INDICATED IS FOR CONVENIENCE ONLY.
THE TIES AS SHOWN SHOULD BE USED TO REPLACE THE CORNER, IF
DESTROYED



OPC ORANGE PLASTIC CAP
() RECORDED AS

PREVIOUSLY RECORDED IN RECORDER'S DOCUMENT 2010 3495

MONUMENT DESCRIPTION AND HOW ESTABLISHED FOUND LIMESTONE LEANING AGAINST CORNER POST. LIMESTONE WAS SLIGHTLY BURIED AND APPEARED TO HAVE BEEN DUG UP WHEN A NEW CORNER POST WAS PLACED. THE STONE IS SHAPED AS A TRUNCATED TRIANGLE BEING 16" AT THE BASE, 16" IN HEIGHT, 8" AT THE TOP, AND 5-1/2" THICK. A 5/8"X24" REBAR WITH AN ORANGE PLASTIC CAP #11310 AT THE POSITION WHERE IT SEEMED MOST LIKELY TO HAVE BEEN AS THE FENCE AND CORNER POST PREVENTED US FROM PLACING THE STONE CORRECTLY. WE LOWERED THE STONE AS CLOSE TO WHERE WE THOUGHT IT SHOULD HAVE BEEN AND PUT THE REBAR IN BETWEEN THE FENCE CORNER AND THE STONE. "SURVEY MARKER" SIGNS WERE SET ON THE EAST AND WEST FACES OF THE WOOD CORNER POST ADJACENT TO THE STONE AND REBAR.

FIELD BOOK MISC. 2009-2010, PAGE 155. DATE OF SURVEY: 9/3/2010



I hereby certify that this land surveying document and the related survey work was performed by me or under my direct personal supervision and that I am a duly registered Land Surveyor under the laws of the State of Iowa.
Signed: *Clarence J. Walton* 12/20/10
Clarence J. Walton, L.S.
My Registration Renewal Date is December 31, 2011
Iowa License Number 11310
Pages or sheets covered by this seal: 1 of 1.

- A. THERE IS NO CERTIFICATE FOR THE CORNER ON FILE WITH THE RECORDER OF THE COUNTY IN WHICH THE CORNER IS LOCATED.
- B. THE CORNER MONUMENT HAS BEEN REPLACED OR MODIFIED.
- C. THE SURVEYOR IN RESPONSIBLE CHARGE OF THE LAND SURVEYING ACCEPTS A CORNER POSITION THAT DIFFERS FROM THAT SHOWN IN THE PUBLIC RECORDS OF THE COUNTY IN WHICH THE CORNER IS LOCATED.
- D. THE REFERENCE TIES REFERRED TO IN AN EXISTING PUBLIC RECORD NO LONGER EXIST.

CORNERS TO BE INDEXED

CORNER	SECTION	TOWNSHIP	RANGE
N 1/4 CORNER	23	83N	4W
S 1/4 CORNER	14	83N	4W

JONES COUNTY ENGINEER'S OFFICE

19501 HWY. 64, ANAMOSA, IOWA 52205
(319) 462-3785