

2005 0182

FILED
RECORDERS OFFICE
JONES COUNTY IOWA

05 JAN 14 PM 1:42

MARIE KRUTZFIELD
RECORDER *No Fee*

J.D. TJEPKES, LS. JONES COUNTY ENGINEER'S OFFICE, 19501 HWY. 64, ANAMOSA, IOWA, 52205 (319)462-3785

UNITED STATES PUBLIC LAND SURVEY CORNER CERTIFICATE

LAND SURVEY MONUMENTS SITUATED IN SECTION 24, TOWNSHIP 83
NORTH, RANGE 4 WEST OF THE 5TH P.M., JONES COUNTY, IOWA

CORNERS TO BE INDEXED

CORNER	SECTION	TOWNSHIP	RANGE
NE-SE-SE	24	83N	4W

OFFICE FILE NO. 83424t_102004.tif

FIELD NOTES:
8-12-2002
BK 335
P 49

1699 ✓

PREVIOUSLY RECORDED IN BOOK NA, PAGE NA
MONUMENT DESCRIPTION AND HOW ESTABLISHED _____
NOTE: HALL & HALL MARKED LOCATION IN CONJUNCTION WITH JONES CO. PROJECT NO. CO-53(38)--55-53. SET 1/2" X 24" REBAR W/CAP #11954. RETIED AS INDICATED. NORTHEAST CORNER, SOUTHEAST QUARTER, SOUTHEAST QUARTER--24-83-4, JONES COUNTY, IOWA.

CORNERS TO BE INDEXED

CORNER	SECTION	TOWNSHIP	RANGE
E-QUARTER	24	83N	4W

OFFICE FILE NO. 83424o_102004.tif

FIELD NOTES:
8-12-2002
BK 335
P 50

1173 ✓

PREVIOUSLY RECORDED IN BOOK NA, PAGE NA
MONUMENT DESCRIPTION AND HOW ESTABLISHED _____
NOTE: HALL & HALL MARKED LOCATION IN CONJUNCTION WITH JONES CO. PROJECT NO. CO-53(38)--55-53. SET 1/2" X 24" REBAR W/CAP #11954. RETIED AS INDICATED. EAST QUARTER CORNER SECTION 24 T83N R4W, JONES COUNTY, IOWA.

CORNERS TO BE INDEXED

CORNER	SECTION	TOWNSHIP	RANGE
NE-SE-NE	24	83N	4W

OFFICE FILE NO. 83424j_102004.tif

FIELD NOTES:
8-26-2002
BK 335
P 50

1700 ✓

PREVIOUSLY RECORDED IN BOOK NA, PAGE NA
MONUMENT DESCRIPTION AND HOW ESTABLISHED _____
NOTE: HALL & HALL MARKED LOCATION IN CONJUNCTION WITH JONES CO. PROJECT NO. CO-53(38)--55-53. SET 1/2" X 24" REBAR W/CAP #11954. RETIED AS INDICATED. NORTHEAST CORNER, SOUTHEAST QUARTER, NORTHEAST QUARTER, SECTION 24 T83N R4W, JONES COUNTY, IOWA.

CORNERS TO BE INDEXED

CORNER	SECTION	TOWNSHIP	RANGE
NORTHEAST	24	83N	4W

OFFICE FILE NO. 83424e_102004.tif

FIELD NOTES:
8-26-2002
BK 335
P 51

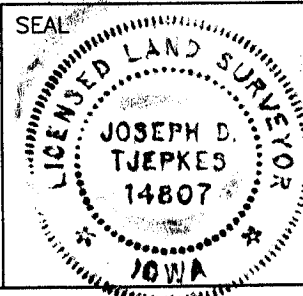
1247 ✓

PREVIOUSLY RECORDED IN BOOK NA, PAGE NA
MONUMENT DESCRIPTION AND HOW ESTABLISHED _____
NOTE: HALL & HALL MARKED LOCATION IN CONJUNCTION WITH JONES CO. PROJECT NO. CO-53(38)--55-53. SET 1/2" X 24" REBAR W/CAP #11954. RETIED AS INDICATED. NORTHEAST CORNER SECTION 24 T83N R4W, JONES COUNTY, IOWA.

I hereby declare that this plat, survey or report was made by me or under my direct personal supervision and that I am a duly registered Land Surveyor under the laws of the State of Iowa.

Signed: *J.D. Tjepkes* 1-14-05

Joseph D. Tjepkes L.S. Iowa Reg. No. 14807
My Registration Renewal Date is December 31, 2006



J.D. TJEPKES LS 14807
JONES COUNTY
ENGINEER'S OFFICE

19501 HWY. 64,
ANAMOSA, IOWA,
52205 (319)462-3785

E

THIS IS NOT A CERTIFICATION

JONES COUNTY ENGINEER'S OFFICE, 19501 HWY. 64, ANAMOSA, IOWA, 52205 (319)462-3785

UNITED STATES PUBLIC LAND SURVEY CORNER CERTIFICATE

LAND SURVEY MONUMENTS SITUATED IN SECTION 24, TOWNSHIP 83
NORTH, RANGE 4 WEST OF THE 5TH P.M., JONES COUNTY, IOWA

CORNERS TO BE INDEXED

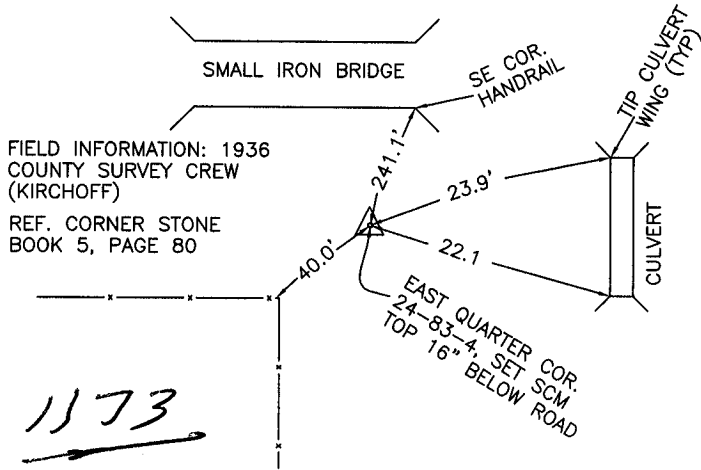
CORNER SECTION TOWNSHIP RANGE
E-QUARTER 24 83N 4W



NO SCALE

OFFICE FILE NO.

83424o_090503.jpg



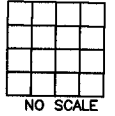
1173

PREVIOUSLY RECORDED IN BOOK _____, PAGE _____
FOUND
GRANITE STONE 16" LONG AND POINTED. LOWERED STONE, SET
STANDARD CONCRETE MONUMENT ABOVE WITH TOP 16" BELOW
SURFACE. TIES AS INDICATED. EAST QUARTER SECTION 24, T83N,
RANGE 4 WEST OF 5TH PM, JONES COUNTY, IOWA.

Replace

CORNERS TO BE INDEXED

CORNER SECTION TOWNSHIP RANGE



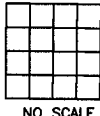
NO SCALE

OFFICE FILE NO.

PREVIOUSLY RECORDED IN BOOK _____, PAGE _____
MONUMENT DESCRIPTION AND HOW ESTABLISHED _____

CORNERS TO BE INDEXED

CORNER SECTION TOWNSHIP RANGE



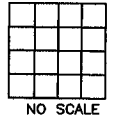
NO SCALE

OFFICE FILE NO.

PREVIOUSLY RECORDED IN BOOK _____, PAGE _____
MONUMENT DESCRIPTION AND HOW ESTABLISHED _____

CORNERS TO BE INDEXED

CORNER SECTION TOWNSHIP RANGE



NO SCALE

OFFICE FILE NO.

PREVIOUSLY RECORDED IN BOOK _____, PAGE _____
MONUMENT DESCRIPTION AND HOW ESTABLISHED _____

~~I hereby declare that this plat, survey or report was made by me or under my direct personal supervision and that I am a duly registered Land Surveyor under the laws of the State of Iowa.~~

Signed:

SEAL

JONES COUNTY
ENGINEER'S OFFICE

19501 HWY. 64,
ANAMOSA, IOWA,
52205 (319)462-3785

d