

2005 0181

FILED  
RECORDERS OFFICE  
JONES COUNTY IOWA

05 JAN 14 PM 1:41

MARIE KRUTZFIELD  
RECORDER *No Fee*

J.D. TJEPKES, LS. JONES COUNTY ENGINEER'S OFFICE, 19501 HWY. 64, ANAMOSA, IOWA, 52205 (319)462-3785

# UNITED STATES PUBLIC LAND SURVEY CORNER CERTIFICATE

LAND SURVEY MONUMENTS SITUATED IN SECTION 25, TOWNSHIP 83  
NORTH, RANGE 4 WEST OF THE 5TH P.M., JONES COUNTY, IOWA

**CORNERS TO BE INDEXED**

CORNER	SECTION	TOWNSHIP	RANGE
NE SE SE	25	83N	4W

OFFICE FILE NO. 83425t\_080404.tif

FIELD NOTES:  
10-17-2000  
BK 335  
P47

PREVIOUSLY RECORDED IN BOOK NA, PAGE NA  
MONUMENT DESCRIPTION AND HOW ESTABLISHED  
NOTE: HALL & HALL MARKED LOCATION IN CONJUNCTION WITH JONES CO. PROJECT NO. CO-53(38)--55-53. SET 1/2"x24" REBAR W/CAP #11954. RETIED AS INDICATED. NORTHEAST CORNER, SOUTHEAST QUARTER, SOUTHEAST QUARTER, SECTION 25, T83N R4W. JONES COUNTY, IOWA.

**CORNERS TO BE INDEXED**

CORNER	SECTION	TOWNSHIP	RANGE
E-QUARTER	25	83N	4W

OFFICE FILE NO. 83425o\_102004.tif

FIELD NOTES:  
10-17-2000  
BK 335  
P48

PREVIOUSLY RECORDED IN BOOK NA, PAGE NA  
MONUMENT DESCRIPTION AND HOW ESTABLISHED  
NOTE: HALL & HALL MARKED LOCATION IN CONJUNCTION WITH JONES CO. PROJECT NO. CO-53(38)--55-53. SET 1/2"x24" REBAR W/CAP #11954. RETIED AS INDICATED. EAST QUARTER CORNER SECTION 25 T83N R4W. JONES COUNTY, IOWA.

**CORNERS TO BE INDEXED**

CORNER	SECTION	TOWNSHIP	RANGE
NE SE NE	25	83N	4W

OFFICE FILE NO. 83425j\_102004.tif

FIELD NOTES:  
8-26-2002  
BK 335  
P48

PREVIOUSLY RECORDED IN BOOK NA, PAGE NA  
MONUMENT DESCRIPTION AND HOW ESTABLISHED  
NOTE: HALL & HALL MARKED LOCATION IN CONJUNCTION WITH JONES CO. PROJECT NO. CO-53(38)--55-53. SET 1/2"x24" REBAR W/CAP #11954. RETIED AS INDICATED. NORTHEAST CORNER, SOUTHEAST QUARTER, NORTHEAST QUARTER, SECTION 25, T83N R4W, JONES COUNTY, IOWA.

**CORNERS TO BE INDEXED**

CORNER	SECTION	TOWNSHIP	RANGE
NORTHEAST	25	83N	4W

OFFICE FILE NO. 83425e\_102004.tif

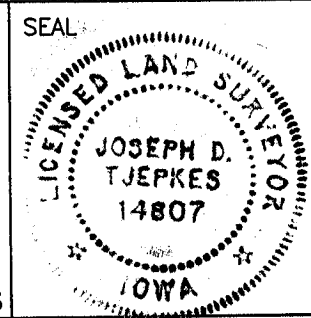
FIELD NOTES:  
8-26-2002  
BK 335  
P49

PREVIOUSLY RECORDED IN BOOK NA, PAGE NA  
MONUMENT DESCRIPTION AND HOW ESTABLISHED  
NOTE: HALL & HALL MARKED LOCATION IN CONJUNCTION WITH JONES CO. PROJECT NO. CO-53(38)--55-53. SET 1/2"x24" REBAR W/CAP #11954. RETIED AS INDICATED. NORTHEAST CORNER SECTION 25, T83N R4W, JONES COUNTY, IOWA.

I hereby declare that this plat, survey or report was made by me or under my direct personal supervision and that I am a duly registered Land Surveyor under the laws of the State of Iowa.

Signed: [Signature] 1-14-05

Joseph D. Tjepkes L.S. Iowa Reg. No. 14807  
My Registration Renewal Date is December 31, 2006



J.D. TJEPKES LS 14807  
JONES COUNTY  
ENGINEER'S OFFICE

19501 HWY. 64,  
ANAMOSA, IOWA,  
52205 (319)462-3785

# THIS IS NOT A CERTIFICATION

JONES COUNTY ENGINEER'S OFFICE, 19501 HWY. 64, ANAMOSA, IOWA, 52205 (319)462-3785

## UNITED STATES PUBLIC LAND SURVEY CORNER CERTIFICATE

LAND SURVEY MONUMENTS SITUATED IN SECTION 25, TOWNSHIP 83  
NORTH, RANGE 4 WEST OF THE 5TH P.M., JONES COUNTY, IOWA

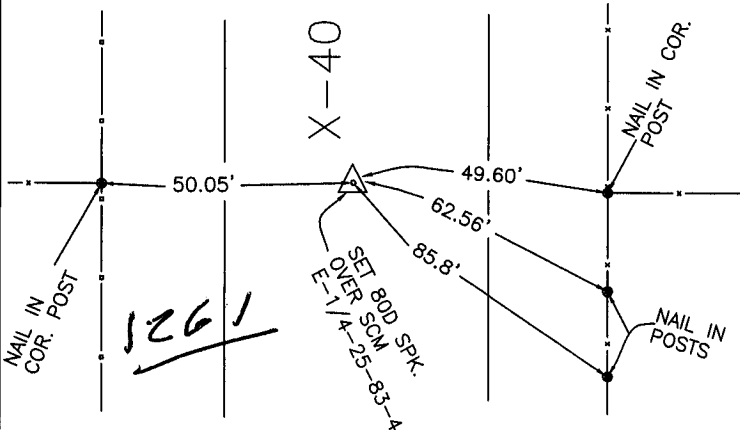
### CORNERS TO BE INDEXED

CORNER SECTION TOWNSHIP RANGE  
NE-CORNER 25 83N 4W



OFFICE FILE NO.  
83425e\_090903.jpg

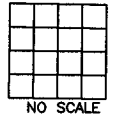
REFERENCE INFORMATION:  
1936 & 1977  
CORNER STONE BOOK 5, P-81  
FIELD BOOK 257  
COUNTY SURVEY CREW



PREVIOUSLY RECORDED IN BOOK \_\_\_\_\_, PAGE \_\_\_\_\_  
STONE FOUND IN 1936, STANDARD CONCRETE MONUMENT SET OVER.  
80D SET OVER MONUMENT IN 1977 1' LEFT OF CENTER. TIES AS  
INDICATED FROM 1977. NORTHEAST CORNER SECTION 25, T83N,  
R4W, 5TH PM, JONES COUNTY, IOWA.

### CORNERS TO BE INDEXED

CORNER SECTION TOWNSHIP RANGE

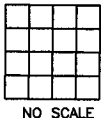


OFFICE FILE NO.

PREVIOUSLY RECORDED IN BOOK \_\_\_\_\_, PAGE \_\_\_\_\_  
MONUMENT DESCRIPTION AND HOW ESTABLISHED \_\_\_\_\_

### CORNERS TO BE INDEXED

CORNER SECTION TOWNSHIP RANGE

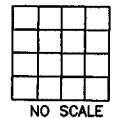


OFFICE FILE NO.

PREVIOUSLY RECORDED IN BOOK \_\_\_\_\_, PAGE \_\_\_\_\_  
MONUMENT DESCRIPTION AND HOW ESTABLISHED \_\_\_\_\_

### CORNERS TO BE INDEXED

CORNER SECTION TOWNSHIP RANGE



OFFICE FILE NO.

PREVIOUSLY RECORDED IN BOOK \_\_\_\_\_, PAGE \_\_\_\_\_  
MONUMENT DESCRIPTION AND HOW ESTABLISHED \_\_\_\_\_

~~I hereby declare that this plat, survey or report was made by me or under my direct personal supervision and that I am a duly registered Land Surveyor under the laws of the State of Iowa.~~

Signed: \_\_\_\_\_

SEAL

JONES COUNTY  
ENGINEER'S OFFICE

19501 HWY. 64,  
ANAMOSA, IOWA,  
52205 (319)462-3785