

# UNITED STATES PUBLIC LAND SURVEY CORNER CERTIFICATE

LAND SURVEY MONUMENTS SITUATED IN SECTION 25, TOWNSHIP 83 NORTH  
RANGE 04 WEST OF THE 5TH P.M., JONES COUNTY, IOWA.

NO SCALE

W 1/4 CORNER

200TH AVENUE

25TH STREET

NAIL IN TOP OF FENCE POST

TOP CENTER FENCE POST

TOP CENTER GATE POST

TOP CENTER GATE POST

PREVIOUSLY RECORDED IN BOOK \_\_\_\_\_ PAGE \_\_\_\_\_

MONUMENT DESCRIPTION AND HOW ESTABLISHED \_\_\_\_\_

FOUND 5/8" REBAR 1" DEEP PER JONES COUNTY ENGINEERING TIES.

NO SCALE

CENTER

25TH STREET

TOP CENTER 4TH STEEL FENCE POST WEST OF FENCE SOUTH

TOP CENTER 1ST STEEL FENCE POST EAST OF FENCE SOUTH

TOP CENTER 2ND STEEL FENCE POST WEST OF FENCE SOUTH

TOP CENTER CORNER FENCE POST (TALLER OF 2)

REGISTERED LAND SURVEYOR  
CLARENCE J. WALTON  
11310  
IOWA

PREVIOUSLY RECORDED IN BOOK \_\_\_\_\_ PAGE \_\_\_\_\_

MONUMENT DESCRIPTION AND HOW ESTABLISHED \_\_\_\_\_

FOUND 5/8" REBAR 6" DEEP

I hereby declare that this plat, survey or report was made by me or under my direct personal supervision and that I am a duly registered Land Surveyor under the laws of the State of Iowa.

Signed Clarence J. Walton Date 7/1/99

Clarence J. Walton L.S. Iowa Reg No. 11310  
My Registration Renewal Date Is December 31, 1999

CORNERS TO BE INDEXED			
CORNER	SECTION	TOWNSHIP	RANGE
W 1/4 CORNER	25	T83N	R4W
CENTER	25	T83N	R4W

**BRAIN ENGINEERING, INC.**  
777 10TH STREET MARION, IOWA 52302 (319) 373-1318

24379-10

834260-070199, 83425m-070199

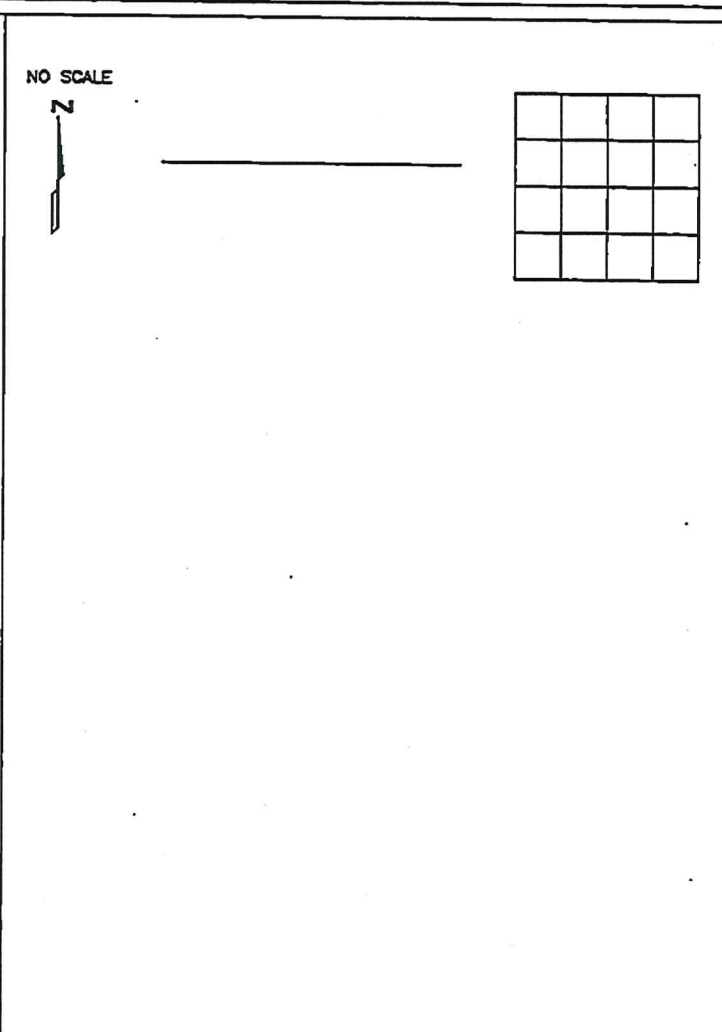
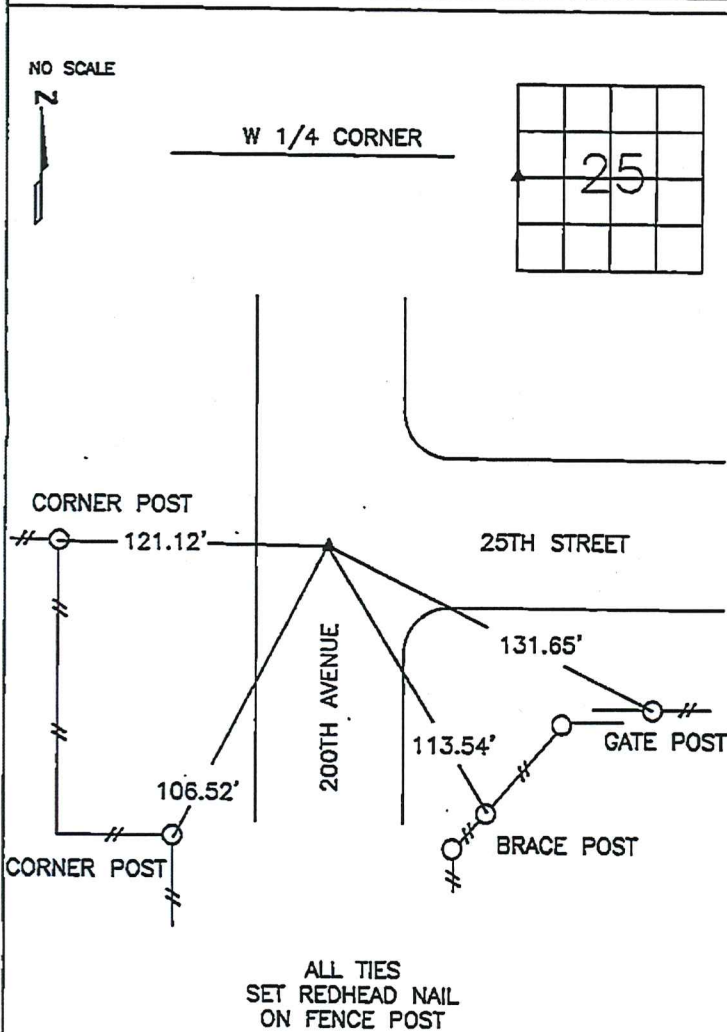
Instrument #: 2014-3407  
 12/31/2014 11:30:31 AM Total Pages: 1  
 ZSC SECTION CORNER CERTIFICATE  
 Recording Fee: \$7.00 Transfer Tax: \$0  
 Marie Krutzfield, Recorder, Jones County Iowa



PREPARED BY  
 STEPHEN MICHAEL BRAIN, BRAIN ENGINEERING, INC., 1540 MIDLAND COURT NE, CEDAR RAPIDS, IOWA PH. (319) 294-9424

# UNITED STATES PUBLIC LAND SURVEY CORNER CERTIFICATE

LAND SURVEY MONUMENTS SITUATED IN SECTION 25, TOWNSHIP 83 NORTH  
 RANGE 4 WEST OF THE 5TH P.M., JONES COUNTY, IOWA.



PREVIOUSLY RECORDED IN FEE BOOK 1999 2441

PREVIOUSLY RECORDED IN BOOK \_\_\_\_\_ PAGE \_\_\_\_\_

MONUMENT DESCRIPTION AND HOW ESTABLISHED \_\_\_\_\_  
 FOUND  $\frac{3}{8}$ " REBAR, 12" BELOW THE SURFACE IN THE CENTERLINES OF 200TH AVENUE AND 25TH STREET. DESCRIPTION AND LOCATION MATCHED PREVIOUSLY RECORDED TIE AND PLAT OF SURVEY RECORDED IN FEE BOOK 2004 3240

MONUMENT DESCRIPTION AND HOW ESTABLISHED \_\_\_\_\_



I hereby certify that this land surveying document and the related survey work was performed by me or under my direct personal supervision and that I am a duly licensed Land Surveyor under the laws of the State of Iowa.

Signed: *Stephen Michael Brain* Date: 12/29/14  
 Stephen Michael Brain, L.S.  
 My License Renewal Date is December 31, 2014  
 License Number 9647  
 Pages or sheets covered by this seal: 1/1

- A. THERE IS NO CERTIFICATE FOR THE CORNER ON FILE WITH THE RECORDER OF THE COUNTY IN WHICH THE CORNER IS LOCATED
- B. THE SURVEYOR IN RESPONSIBLE CHARGE OF THE LAND SURVEYING ACCEPTS A CORNER POSITION WHICH DIFFERS FROM THAT SHOWN IN THE PUBLIC RECORDS OF THE COUNTY IN WHICH THE CORNER IS LOCATED.
- C. THE CORNER MONUMENT IS REPLACED OR MODIFIED IN ANY WAY.
- D. THE REFERENCE TIES REFERRED TO IN AN EXISTING PUBLIC RECORD ARE NOT CORRECT.

CORNERS TO BE INDEXED			
CORNER	SECTION	TOWNSHIP	RANGE
W 1/4 CORNER	25	T83N	R4 W

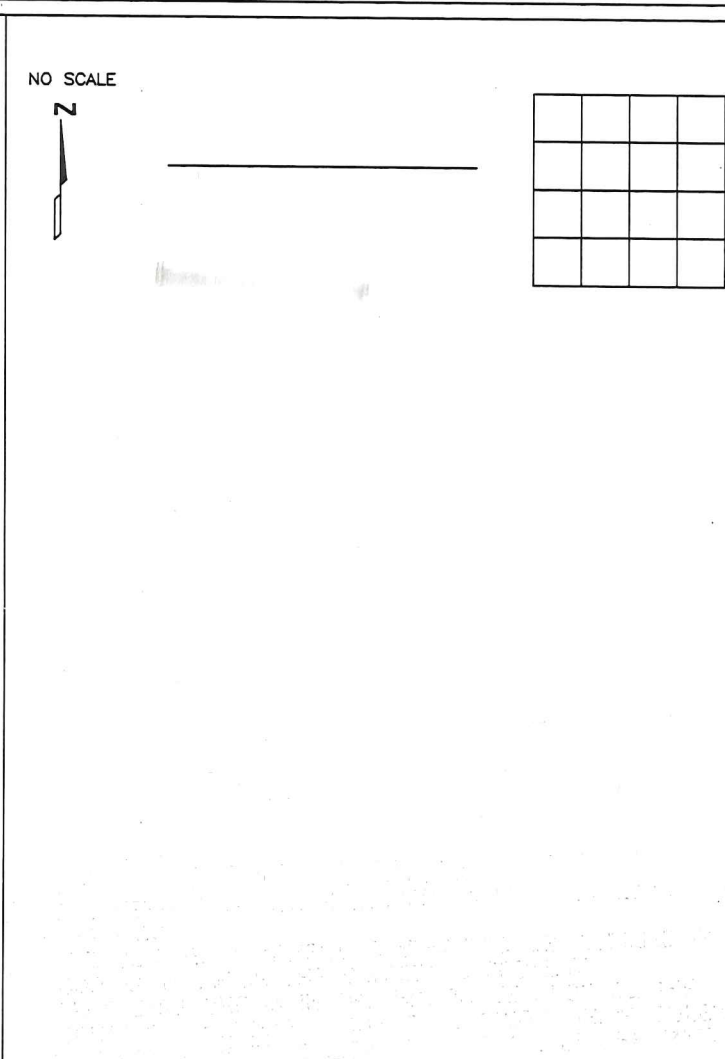
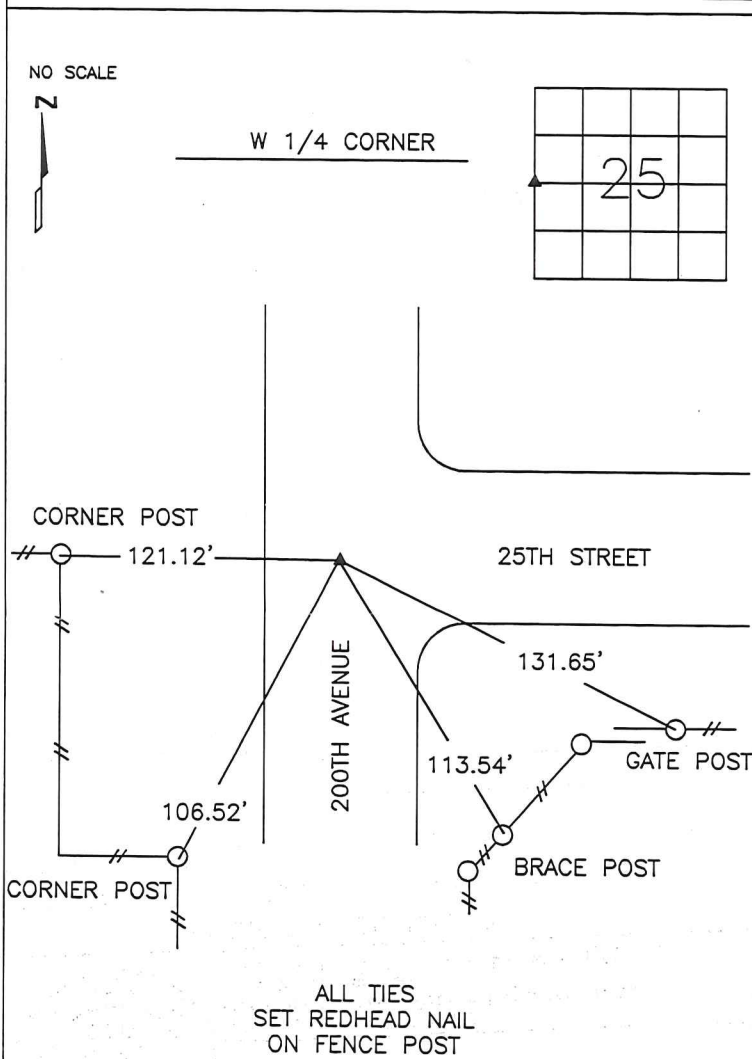
**BRAIN ENGINEERING, INC.**

1540 MIDLAND COURT NE  
 CEDAR RAPIDS, IOWA 52402 489214-10  
 (319) 294-9424

PREPARED BY  
 STEPHEN MICHAEL BRAIN, BRAIN ENGINEERING, INC., 1540 MIDLAND COURT NE, CEDAR RAPIDS, IOWA PH. (319) 294-9424

# UNITED STATES PUBLIC LAND SURVEY CORNER CERTIFICATE

LAND SURVEY MONUMENTS SITUATED IN SECTION 25, TOWNSHIP 83 NORTH  
 RANGE 4 WEST OF THE 5TH P.M., JONES COUNTY, IOWA.

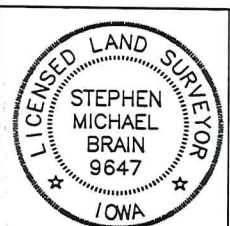


PREVIOUSLY RECORDED IN FEE BOOK 1999 2441

PREVIOUSLY RECORDED IN BOOK \_\_\_\_\_ PAGE \_\_\_\_\_

MONUMENT DESCRIPTION AND HOW ESTABLISHED \_\_\_\_\_  
 FOUND 5/8" REBAR, 12" BELOW THE SURFACE IN THE CENTERLINES OF 200TH AVENUE AND 25TH STREET. DESCRIPTION AND LOCATION MATCHED PREVIOUSLY RECORDED TIE AND PLAT OF SURVEY RECORDED IN FEE BOOK 2004 3240

MONUMENT DESCRIPTION AND HOW ESTABLISHED \_\_\_\_\_



I hereby certify that this land surveying document and the related survey work was performed by me or under my direct personal supervision and that I am a duly licensed Land Surveyor under the laws of the State of Iowa.  
 Signed \_\_\_\_\_ Date 12/29/14

Stephen Michael Brain, L.S.  
 My License Renewal Date is December 31, 2014  
 License Number 9647  
 Pages or sheets covered by this seal: 1/1

- A.THERE IS NO CERTIFICATE FOR THE CORNER ON FILE WITH THE RECORDER OF THE COUNTY IN WHICH THE CORNER IS LOCATED
- B.THE SURVEYOR IN RESPONSIBLE CHARGE OF THE LAND SURVEYING ACCEPTS A CORNER POSITION WHICH DIFFERS FROM THAT SHOWN IN THE PUBLIC RECORDS OF THE COUNTY IN WHICH THE CORNER IS LOCATED.
- C.THE CORNER MONUMENT IS REPLACED OR MODIFIED IN ANY WAY.
- D.THE REFERENCE TIES REFERRED TO IN AN EXISTING PUBLIC RECORD ARE NOT CORRECT.

CORNERS TO BE INDEXED			
CORNER	SECTION	TOWNSHIP	RANGE
W 1/4 CORNER	25	T83N	R4 W

**BRAIN ENGINEERING, INC.**

1540 MIDLAND COURT NE  
 CEDAR RAPIDS, IOWA 52402  
 (319) 294-9424

489214-10