

COPY

Jones County Iowa
Marie Krutzfield, Recorder
Fee Book 2010 3499
12/14/2010 @1122AM
ZSC SEC COR CERT
Book: Page: # Pages: 1
Total Fees: \$0.00

PREPARED BY
CLARENCE J. WALTON, JONES COUNTY ENGINEER'S OFFICE, 19501 HWY. 64, ANAMOSA, IOWA, 52205 (319) 462-3785

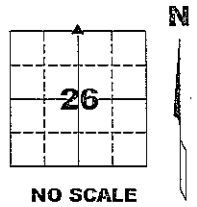
UNITED STATES PUBLIC LAND SURVEY CORNER CERTIFICATE

LAND SURVEY MONUMENTS SITUATED IN SECTION 26, TOWNSHIP 83 NORTH,
RANGE 4 WEST OF THE 5TH PRINCIPAL MERIDIAN, JONES COUNTY, IOWA.

PROJECT: M-1511

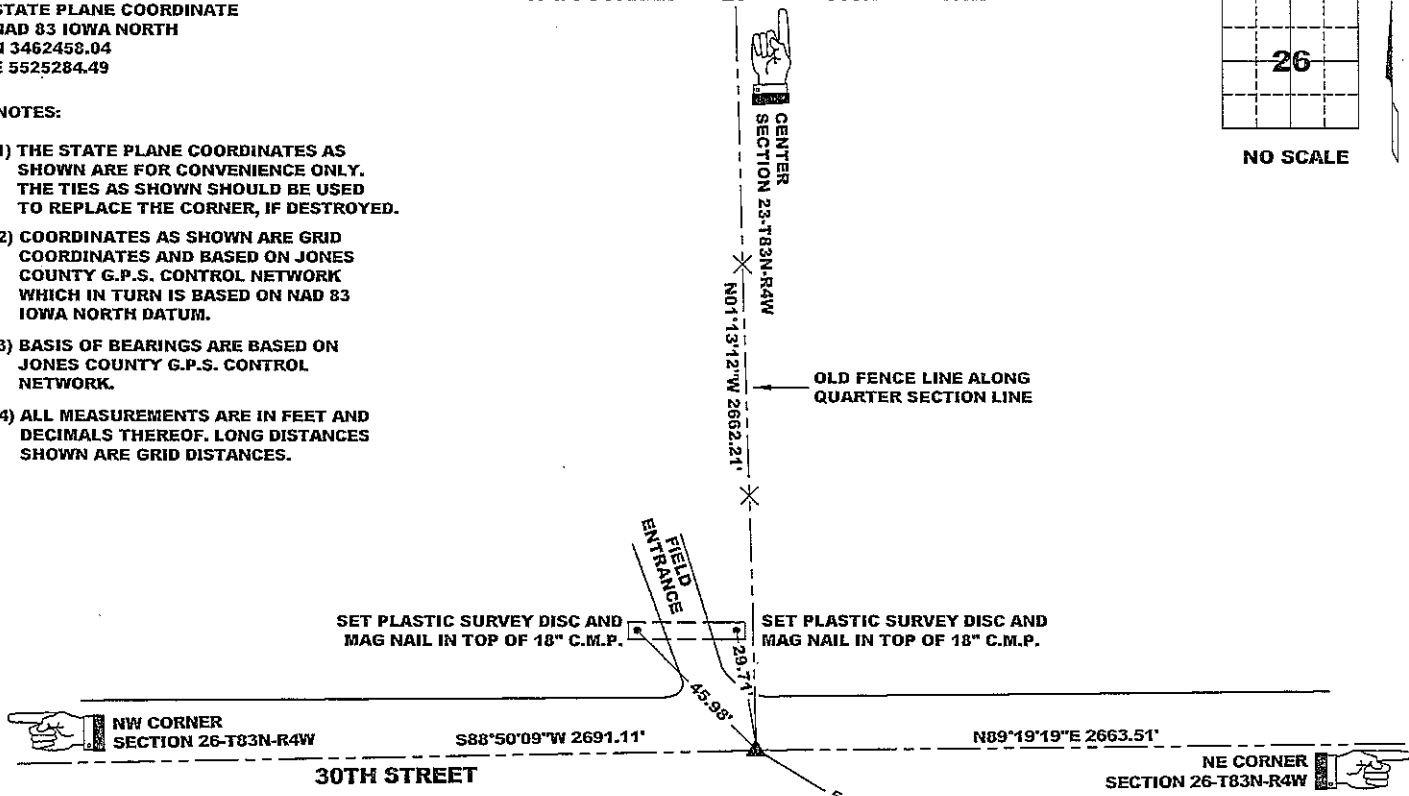
STATE PLANE COORDINATE
NAD 83 IOWA NORTH
N 3462458.04
E 5525284.49

CORNER SECTION TOWNSHIP RANGE
N 1/4 CORNER 26 T83N R4W



NOTES:

- 1) THE STATE PLANE COORDINATES AS SHOWN ARE FOR CONVENIENCE ONLY. THE TIES AS SHOWN SHOULD BE USED TO REPLACE THE CORNER, IF DESTROYED.
- 2) COORDINATES AS SHOWN ARE GRID COORDINATES AND BASED ON JONES COUNTY G.P.S. CONTROL NETWORK WHICH IN TURN IS BASED ON NAD 83 IOWA NORTH DATUM.
- 3) BASIS OF BEARINGS ARE BASED ON JONES COUNTY G.P.S. CONTROL NETWORK.
- 4) ALL MEASUREMENTS ARE IN FEET AND DECIMALS THEREOF. LONG DISTANCES SHOWN ARE GRID DISTANCES.



"SURVEY MARKER" SIGN

PLEASE PROTECT NEARBY
SURVEY MARKER
IF LOCATION OF THIS MARK IS ENDANGERED PLEASE CONTACT JONES COUNTY ENGINEER'S OFFICE 319-462-3785

SURVEY DISC

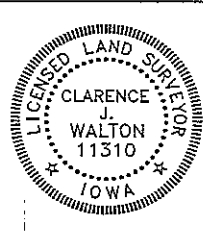


OPC ORANGE PLASTIC CAP
() RECORDED AS

PREVIOUSLY RECORDED IN BOOK N/A , PAGE N/A

MONUMENT DESCRIPTION AND HOW ESTABLISHED FOUND 5/8"X8" IRON ROD BURIED 4" BELOW EXISTING ROAD SURFACE PER CORNER TIES FROM JONES COUNTY ENGINEER'S OFFICE RECORDS DATED 1977 AND REFERENCED IN JONES COUNTY SURVEY FIELD BOOK No.257, PAGE 13. TIES STATE THAT A CONCRETE MONUMENT WITH ONLY THE BOTTOM 18" REMAINING WAS FOUND ABOVE A LARGE GRANITE STONE. AN IRON ROD WAS SET DIRECTLY THE MONUMENT. TOP OF MONUMENT SHOULD BE APPROXIMATELY 12" BELOW ROAD SURFACE ACCORDING TO NOTES.

FIELD BOOK MISC. 2009-2010, PAGE 142. DATE OF SURVEY: 11/17/10



I hereby certify that this land surveying document and the related survey work was performed by me or under my direct personal supervision and that I am a duly registered Land Surveyor under the laws of the State of Iowa.
Signed:

Clarence J. Walton 12/9/10
Clarence J. Walton, L.S.
My Registration Renewal Date is December 31, 2011
Iowa License Number 11310
Pages or sheets covered by this seal: 1 of 1.

- A. THERE IS NO CERTIFICATE FOR THE CORNER ON FILE WITH THE RECORDER OF THE COUNTY IN WHICH THE CORNER IS LOCATED.
- B. THE CORNER MONUMENT HAS BEEN REPLACED OR MODIFIED.
- C. THE SURVEYOR IN RESPONSIBLE CHARGE OF THE LAND SURVEYING ACCEPTS A CORNER POSITION THAT DIFFERS FROM THAT SHOWN IN THE PUBLIC RECORDS OF THE COUNTY IN WHICH THE CORNER IS LOCATED.
- D. THE REFERENCE TIES REFERRED TO IN AN EXISTING PUBLIC RECORD NO LONGER EXIST.

CORNERS TO BE INDEXED

CORNER	SECTION	TOWNSHIP	RANGE
N 1/4 CORNER	26	83N	4W
S 1/4 CORNER	23	83N	4W

JONES COUNTY ENGINEER'S OFFICE



19501 HWY. 64, ANAMOSA, IOWA 52205
(319) 462-3785

THIS IS NOT A CERTIFICATION

JONES COUNTY ENGINEER'S OFFICE, 19501 HWY. 64, ANAMOSA, IOWA, 52205 (319)462-3785

UNITED STATES PUBLIC LAND SURVEY CORNER CERTIFICATE

LAND SURVEY MONUMENTS SITUATED IN SECTION 26, TOWNSHIP 83
NORTH, RANGE 4 WEST OF THE 5TH P.M., JONES COUNTY, IOWA

CORNERS TO BE INDEXED

CORNER NE-CORNER	SECTION 26	TOWNSHIP 83N	RANGE 4W
OFFICE FILE NO. 83426e_090903.jpg			
REFERENCE INFORMATION: 1977 COUNTY SURVEY CREW FIELD BOOK 257			

PREVIOUSLY RECORDED IN BOOK _____, PAGE _____
DUG 12"X12"X6" HOLE, NOTHING FOUND. PROPORTIONED COR. IN FROM 4-DIRECTIONS. SET 22"X8" REBAR WITH TOP 8" BELOW ROAD SURFACE. NORTHEAST CORNER SECTION 26, TOWNSHIP 83 NORTH, RANGE 4 WEST OF THE 5TH PM, JONES COUNTY, IOWA.

CORNERS TO BE INDEXED

CORNER	SECTION	TOWNSHIP	RANGE
OFFICE FILE NO.			
REFERENCE INFORMATION: 1977 COUNTY SURVEY CREW FIELD BOOK 257			

PREVIOUSLY RECORDED IN BOOK _____, PAGE _____
MONUMENT DESCRIPTION AND HOW ESTABLISHED _____

CORNERS TO BE INDEXED

CORNER	SECTION	TOWNSHIP	RANGE
OFFICE FILE NO.			
REFERENCE INFORMATION: 1977 COUNTY SURVEY CREW FIELD BOOK 257			

PREVIOUSLY RECORDED IN BOOK _____, PAGE _____
MONUMENT DESCRIPTION AND HOW ESTABLISHED _____

CORNERS TO BE INDEXED

CORNER N-QUARTER	SECTION 26	TOWNSHIP 83N	RANGE 4W
OFFICE FILE NO. 83426c_090903			
REFERENCE INFORMATION: 1977 COUNTY SURVEY CREW FIELD BOOK 257			

PREVIOUSLY RECORDED IN BOOK _____, PAGE _____
MONUMENT DESCRIPTION AND HOW ESTABLISHED _____

FD. BROKEN STANDARD CONCRETE MONUMENT WITH STONE BELOW. SET 5/8" REBAR 8" BELOW ROAD SURFACE ABOVE MONUMENT. SET TIES AS INDICATED. NORTH QUARTER CORNER SECTION 26, TOWNSHIP 83 NORTH, RANGE 4 WEST OF THE 5TH PM, JONES COUNTY, IOWA.

~~I hereby declare that this plat, survey or report was made by me or under my direct personal supervision and that I am a duly registered Land Surveyor under the laws of the State of Iowa.~~

Signed: _____

SEAL

JONES COUNTY
ENGINEER'S OFFICE

19501 HWY. 64,
ANAMOSA, IOWA,
52205 (319)462-3785

F