

COPY

Jones County Iowa
 Marie Krutzfield, Recorder
 Fee Book 2010 3501
 12/14/2010 @1124AM
 ZSC SEC COR CERT
 Book: Page: # Pages: 1
 Total Fees: \$0.00

PREPARED BY
 CLARENCE J. WALTON, JONES COUNTY ENGINEER'S OFFICE, 19501 HWY. 64, ANAMOSA, IOWA, 52205 (319) 462-3785

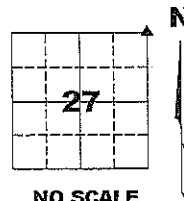
UNITED STATES PUBLIC LAND SURVEY CORNER CERTIFICATE

LAND SURVEY MONUMENTS SITUATED IN SECTION 27, TOWNSHIP 83 NORTH,
 RANGE 4 WEST OF THE 5TH PRINCIPAL MERIDIAN, JONES COUNTY, IOWA.

PROJECT: M-1511

STATE PLANE COORDINATE
 NAD 83 IOWA NORTH
 N 3462403.36
 E 5522593.93

CORNER SECTION TOWNSHIP RANGE
 NE CORNER 27 T83N R4W



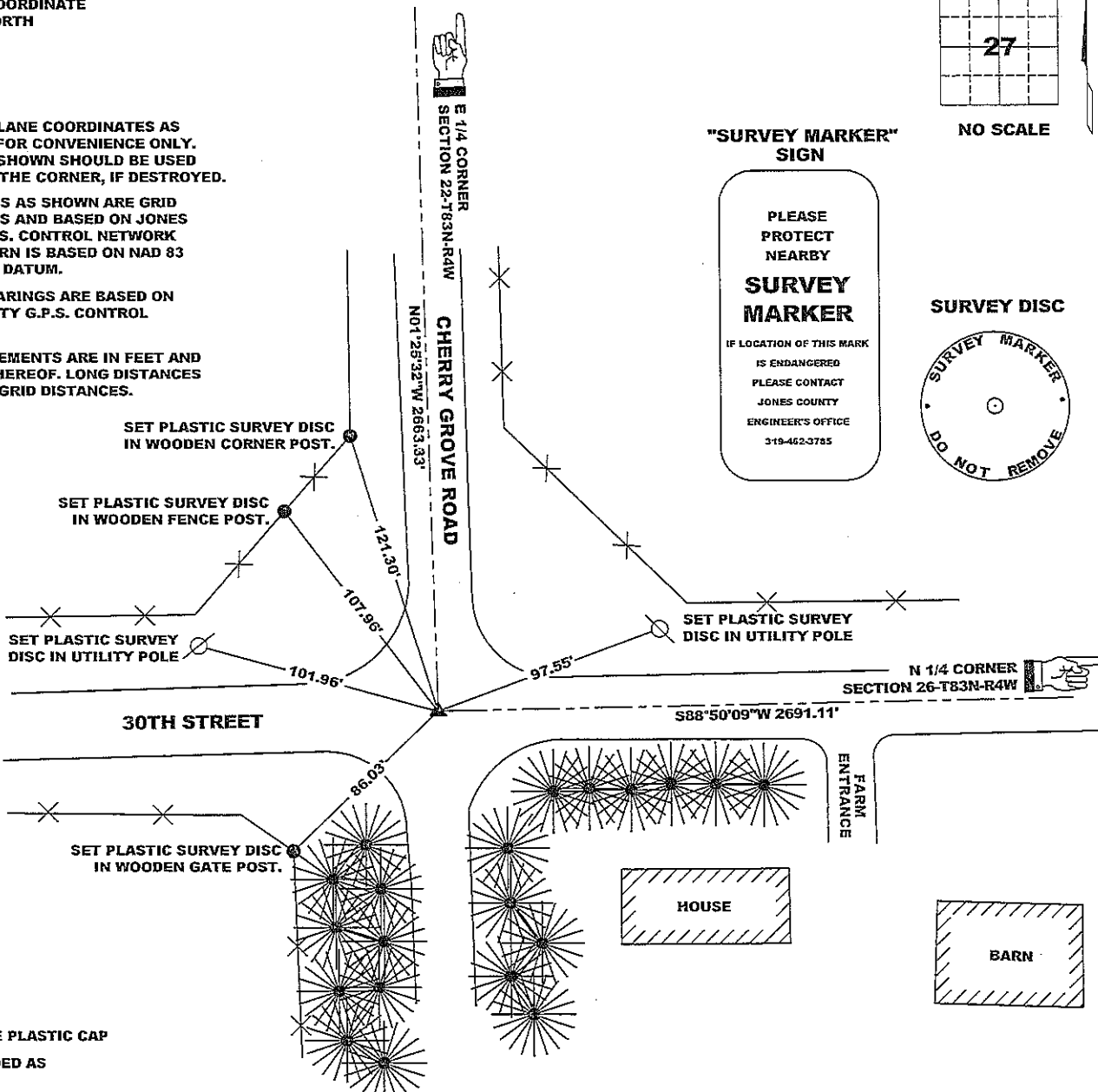
NOTES:

- 1) THE STATE PLANE COORDINATES AS SHOWN ARE FOR CONVENIENCE ONLY. THE TIES AS SHOWN SHOULD BE USED TO REPLACE THE CORNER, IF DESTROYED.
- 2) COORDINATES AS SHOWN ARE GRID COORDINATES AND BASED ON JONES COUNTY G.P.S. CONTROL NETWORK WHICH IN TURN IS BASED ON NAD 83 IOWA NORTH DATUM.
- 3) BASIS OF BEARINGS ARE BASED ON JONES COUNTY G.P.S. CONTROL NETWORK.
- 4) ALL MEASUREMENTS ARE IN FEET AND DECIMALS THEREOF. LONG DISTANCES SHOWN ARE GRID DISTANCES.

"SURVEY MARKER"
 SIGN

PLEASE
 PROTECT
 NEARBY
**SURVEY
 MARKER**
 IF LOCATION OF THIS MARK
 IS ENDANGERED
 PLEASE CONTACT
 JONES COUNTY
 ENGINEER'S OFFICE
 319-462-3785

NO SCALE

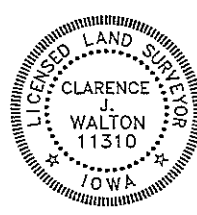


OPC ORANGE PLASTIC CAP
 () RECORDED AS

PREVIOUSLY RECORDED IN BOOK N/A, PAGE N/A

MONUMENT DESCRIPTION AND HOW ESTABLISHED FOUND 5/8"X1/8" IRON ROD BURIED 8" BELOW EXISTING ROAD SURFACE PER CORNER TIES FROM JONES COUNTY ENGINEER'S OFFICE RECORDS DATED 1977 AND REFERENCED IN JONES COUNTY SURVEY FIELD BOOK No. 257, PAGE 10. TIES STATE THAT THE IRON ROD WAS SET DIRECTLY ABOVE A LIMESTONE HAVING A 4"X4" TOP, A 17"X4" BASE, AND BEING 9" LONG WITH A CHISELED "X" ON TOP. THIS IN TURN IS ABOVE A 1" GAS PIPE THE TOP OF WHICH WAS BURIED 36" BELOW THE ROAD SURFACE.

FIELD BOOK MISC. 2009-2010, PAGE 140. DATE OF SURVEY: 11/19/10



I hereby certify that this land surveying document and the related survey work was performed by me or under my direct personal supervision and that I am a duly registered Land Surveyor under the laws of the State of Iowa.

Signed: *Clarence J. Walton* 12/9/10
 Clarence J. Walton, L.S.
 My Registration Renewal Date is December 31, 2011
 Iowa License Number 11310
 Pages or sheets covered by this seal: 1 of 1.

- A. THERE IS NO CERTIFICATE FOR THE CORNER ON FILE WITH THE RECORDER OF THE COUNTY IN WHICH THE CORNER IS LOCATED.
- B. THE CORNER MONUMENT HAS BEEN REPLACED OR MODIFIED.
- C. THE SURVEYOR IN RESPONSIBLE CHARGE OF THE LAND SURVEYING ACCEPTS A CORNER POSITION THAT DIFFERS FROM THAT SHOWN IN THE PUBLIC RECORDS OF THE COUNTY IN WHICH THE CORNER IS LOCATED.
- D. THE REFERENCE TIES REFERRED TO IN AN EXISTING PUBLIC RECORD NO LONGER EXIST.

CORNERS TO BE INDEXED

CORNER	SECTION	TOWNSHIP	RANGE
NE CORNER	27	83N	4W
SE CORNER	22	83N	4W
SW CORNER	23	83N	4W
NW CORNER	26	83N	4W

JONES COUNTY ENGINEER'S OFFICE



19501 HWY. 64, ANAMOSA, IOWA 52205
 (319) 462-3785

THIS IS NOT A CERTIFICATION

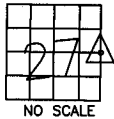
JONES COUNTY ENGINEER'S OFFICE, 19501 HWY. 64, ANAMOSA, IOWA, 52205 (319)462-3785

UNITED STATES PUBLIC LAND SURVEY CORNER CERTIFICATE

LAND SURVEY MONUMENTS SITUATED IN SECTION 27, TOWNSHIP 83
NORTH, RANGE 4 WEST OF THE 5TH P.M., JONES COUNTY, IOWA

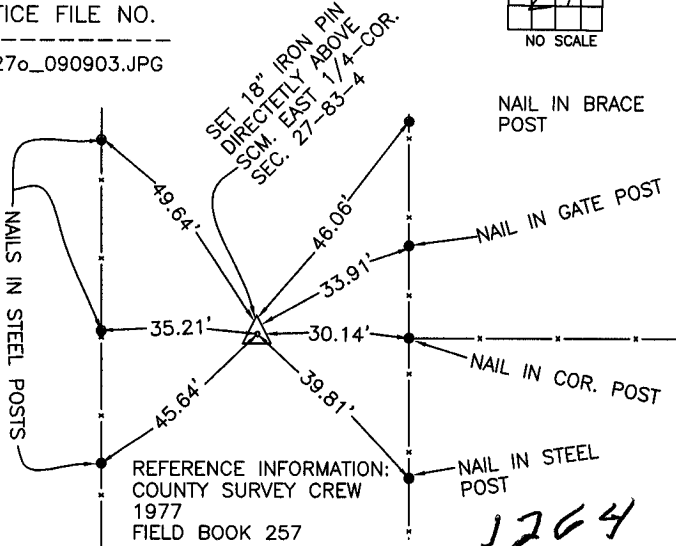
CORNERS TO BE INDEXED

CORNER SECTION TOWNSHIP RANGE
E-QUARTER 27 83N 4W



OFFICE FILE NO.

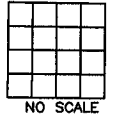
83427o_090903.JPG



PREVIOUSLY RECORDED IN BOOK _____, PAGE _____
FOUND STANDARD CONCRETE 24" BELOW ROAD SURFACE. SET 5/8" X 18" REBAR DIRECTLY ABOVE MONUMENT. SET TIES AS INDICATED. EAST QUARTER OF SECTION 27, TOWNSHIP 83 NORTH, RANGE 4 WEST OF THE 5TH PM, JONES COUNTY, IOWA.

CORNERS TO BE INDEXED

CORNER SECTION TOWNSHIP RANGE

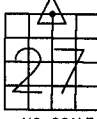


OFFICE FILE NO.

PREVIOUSLY RECORDED IN BOOK _____, PAGE _____
MONUMENT DESCRIPTION AND HOW ESTABLISHED _____

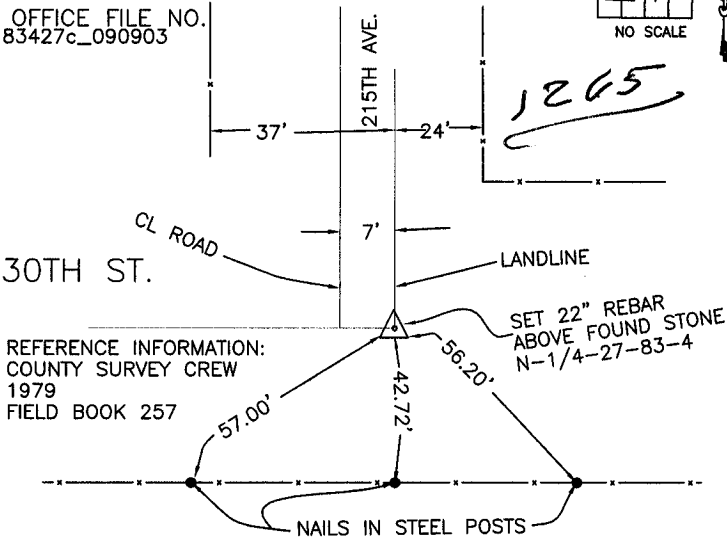
CORNERS TO BE INDEXED

CORNER SECTION TOWNSHIP RANGE
N-QUARTER 27 83N 4W



OFFICE FILE NO.

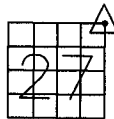
83427c_090903



PREVIOUSLY RECORDED IN BOOK _____, PAGE _____
MONUMENT DESCRIPTION AND HOW ESTABLISHED _____
FOUND LIMESTONE 30" BELOW ROAD SURFACE. SET 22" REBAR DIRECTLY ABOVE STONE AND TIED AS INDICATED, TOP OF PIN 8" BELOW SURFACE. NORTH QUARTER CORNER SECTION 27, TOWNSHIP 83 NORTH, RANGE 4 WEST, JONES COUNTY, IOWA.

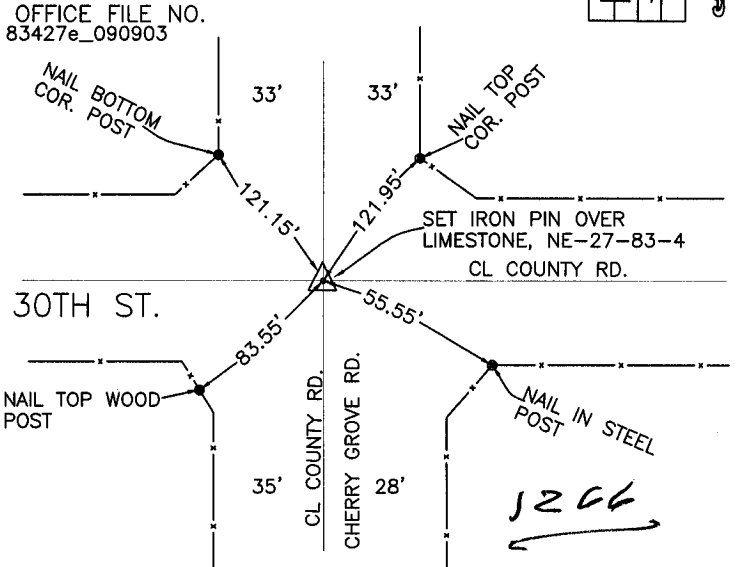
CORNERS TO BE INDEXED

CORNER SECTION TOWNSHIP RANGE
NE-QUARTER 27 83N 4W



OFFICE FILE NO.

83427e_090903



PREVIOUSLY RECORDED IN BOOK _____, PAGE _____
MONUMENT DESCRIPTION AND HOW ESTABLISHED _____
SET IRON PIN OVER LIMESTONE, LIMESTONE OVER GAS PIPE. SET TIES AS INDICATED. NORTHEAST CORNER SECTION 27, TOWNSHIP 83 NORTH, RANGE 4 WEST OF THE 5TH PM, JONES COUNTY, IOWA.

~~I hereby declare that this plat, survey or report was made by me or under my direct personal supervision and that I am a duly registered Land Surveyor under the laws of the State of Iowa.~~

Signed: _____

SEAL

JONES COUNTY
ENGINEER'S OFFICE

19501 HWY. 64,
ANAMOSA, IOWA,
52205 (319)462-3785