

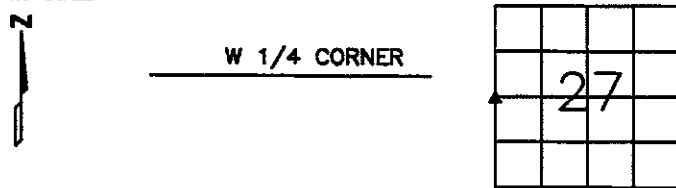
Jones County Marie Krutzfield Recorder  
 Fee Book 2012 3593  
 12/05/2012 @1010AM # Pages 1  
 ZSC SEC COR CERT  
 Total Fees: \$7.00

PREPARED BY  
 STEPHEN MICHAEL BRAIN, BRAIN ENGINEERING, INC., 1540 MIDLAND COURT NE, CEDAR RAPIDS, IOWA PH. (319) 294-9424

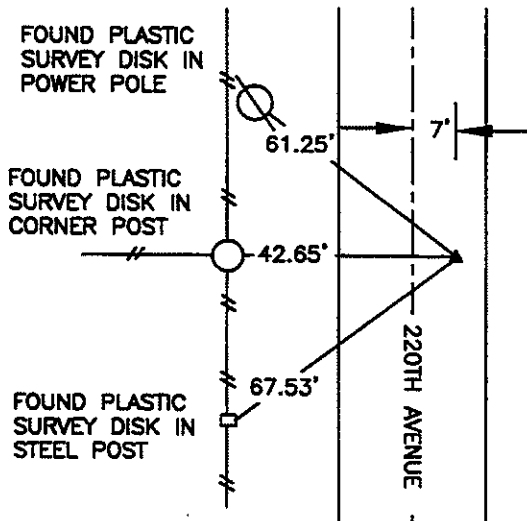
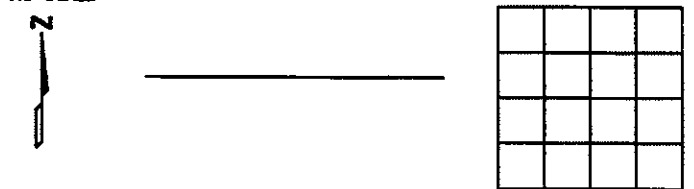
# UNITED STATES PUBLIC LAND SURVEY CORNER CERTIFICATE

LAND SURVEY MONUMENTS SITUATED IN SECTION 27, TOWNSHIP 83 NORTH  
 RANGE 4 WEST OF THE 5TH P.M., JONES COUNTY, IOWA.

NO SCALE



NO SCALE



PREVIOUSLY RECORDED IN BOOK 2003 PAGE 3766

MONUMENT DESCRIPTION AND HOW ESTABLISHED \_\_\_\_\_  
 SET 1/2" REBAR W/ YELLOW PLASTIC CAP #9647 AFTER  
 SEARCHING WITH METAL DETECTOR AND SHOVEL AND FINDING  
 NOTHING. RESET FROM TIES FROM JONES COUNTY  
 RECORDER'S OFFICE.

PREVIOUSLY RECORDED IN BOOK \_\_\_\_\_ PAGE \_\_\_\_\_

MONUMENT DESCRIPTION AND HOW ESTABLISHED \_\_\_\_\_



I hereby certify that this land surveying document  
 and the related survey work was performed by me  
 or under my direct personal supervision and that  
 I am a duly licensed Land Surveyor under the laws  
 of the State of Iowa.  
 Signed \_\_\_\_\_ Date 12/3/12

Stephen Michael Brain, L.S.  
 My License Renewal Date is December 31, 2012  
 License Number 9647  
 Pages or sheets covered by this seal: 1/1

- A.THERE IS NO CERTIFICATE FOR THE CORNER ON FILE WITH THE RECORDER OF THE COUNTY IN WHICH THE CORNER IS LOCATED
- B.THE SURVEYOR IN RESPONSIBLE CHARGE OF THE LAND SURVEYING ACCEPTS A CORNER POSITION WHICH DIFFERS FROM THAT SHOWN IN THE PUBLIC RECORDS OF THE COUNTY IN WHICH THE CORNER IS LOCATED.
- C.THE CORNER MONUMENT IS REPLACED OR MODIFIED IN ANY WAY.
- D.THE REFERENCE TIES REFERRED TO IN AN EXISTING PUBLIC RECORD ARE NOT CORRECT.

CORNERS TO BE INDEXED

CORNER	SECTION	TOWNSHIP	RANGE
W 1/4 CORNER	27	T83N	R4 W

**BRAIN ENGINEERING, INC.**  
 1540 MIDLAND COURT NE  
 CEDAR RAPIDS, IOWA 52402  
 (319) 294-8424

459512-10

VSMB

2003 3766  
 FILED  
 RECORDERS OFFICE  
 JONES COUNTY IOWA

03 AUG -7 AM 10:39

MARIE KRUTZFIELD  
 RECORDER NO FEE

J.D. TJEKES, LS. JONES COUNTY ENGINEER'S OFFICE, 19501 HWY. 64, ANAMOSA, IOWA, 52205 (319)462-3785

# UNITED STATES PUBLIC LAND SURVEY CORNER CERTIFICATE

LAND SURVEY MONUMENTS SITUATED IN SECTION 28, TOWNSHIP 83  
 NORTH, RANGE 4 WEST OF THE 5TH P.M., JONES COUNTY, IOWA

**CORNERS TO BE INDEXED**

CORNER	SECTION	TOWNSHIP	RANGE
EAST-1/4	28	83N	4W

OFFICE FILE NO. \_\_\_\_\_  
 83428e\_080603.jpg

220TH AVE.  
 FD. 5/8" IRON PIN IN ROAD BED. EAST QUARTER COR. SEC. 28-83-4

SET PLASTIC SURVEY DISK IN POWER POLE.  
 SET PLASTIC SURVEY DISK IN CORNER POST.  
 SET PLASTIC SURVEY DISK IN STEEL FENCE POST.

FD. EVIDENCE OF TIE POINTS. NO CERTIFICATE FILED ON THIS CORNER.

DATE OF FIELD WORK: 07-02-03

PREVIOUSLY RECORDED IN BOOK N/A, PAGE N/A  
 MONUMENT DESCRIPTION AND HOW ESTABLISHED FD. 5/8" IRON PIN IN ROAD BED. FOUND EVIDENCE OF TIES IN AREA. NO CERTIFICATE FILED ON THIS CORNER. SET REFERENCE POINTS AND TIED OUT AS INDICATED. EAST QUARTER CORNER OF SECTION 28, TOWNSHIP 83 NORTH, RANGE 4 WEST, 5TH PM, JONES COUNTY, IOWA.

**CORNERS TO BE INDEXED**

CORNER	SECTION	TOWNSHIP	RANGE

OFFICE FILE NO. \_\_\_\_\_

PREVIOUSLY RECORDED IN BOOK \_\_\_\_\_, PAGE \_\_\_\_\_  
 MONUMENT DESCRIPTION AND HOW ESTABLISHED \_\_\_\_\_

**CORNERS TO BE INDEXED**

CORNER	SECTION	TOWNSHIP	RANGE

OFFICE FILE NO. \_\_\_\_\_

PREVIOUSLY RECORDED IN BOOK \_\_\_\_\_, PAGE \_\_\_\_\_  
 MONUMENT DESCRIPTION AND HOW ESTABLISHED \_\_\_\_\_

**CORNERS TO BE INDEXED**

CORNER	SECTION	TOWNSHIP	RANGE

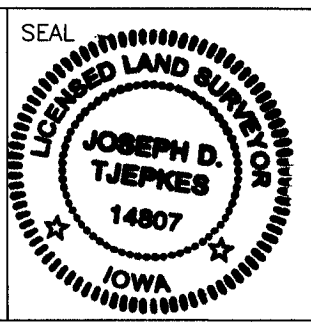
OFFICE FILE NO. \_\_\_\_\_

PREVIOUSLY RECORDED IN BOOK \_\_\_\_\_, PAGE \_\_\_\_\_  
 MONUMENT DESCRIPTION AND HOW ESTABLISHED \_\_\_\_\_

I hereby declare that this plat, survey or report was made by me or under my direct personal supervision and that I am a duly registered Land Surveyor under the laws of the State of Iowa.

Signed [Signature] 8.06.03

Joseph D. Tjepkes L.S. Iowa Reg. No. 14807  
 My Registration Renewal Date is December 31, 2004



J.D. TJEKES LS 14807  
 JONES COUNTY  
 ENGINEER'S OFFICE

19501 HWY. 64,  
 ANAMOSA, IOWA,  
 52205 (319)462-3785