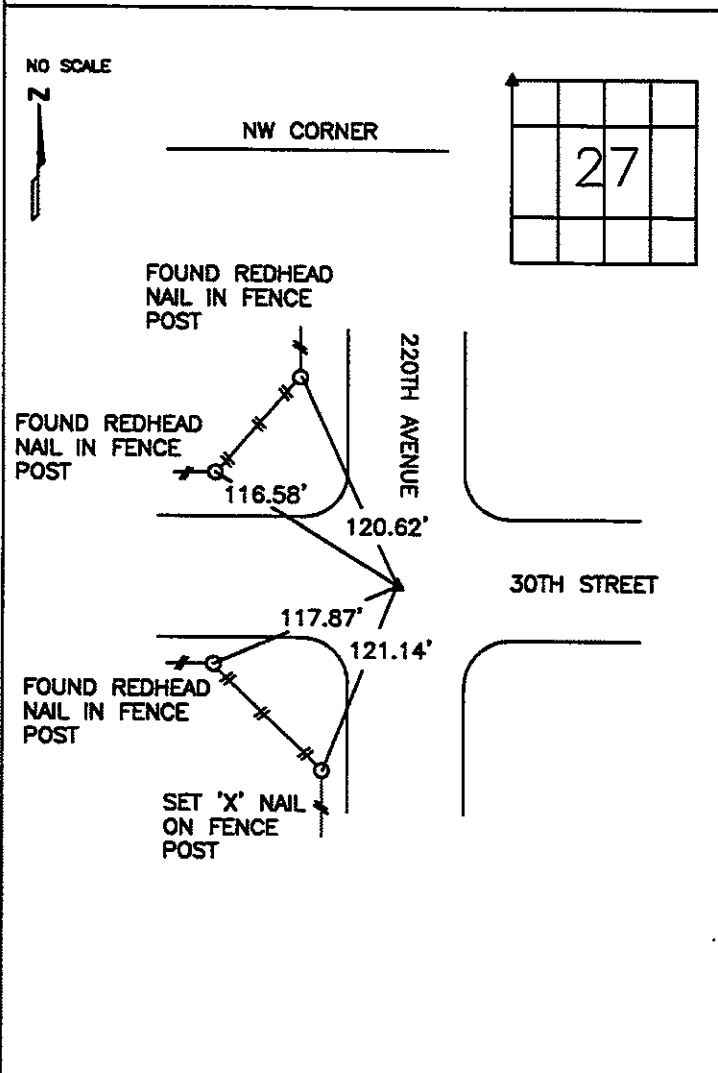


Jones County Marie Krutzfield Recorder
 Fee Book 2012 3592
 12/05/2012 @1006AM # Pages 1
 ZSC SEC COR CERT
 Total Fees: \$7.00

PREPARED BY
 STEPHEN MICHAEL BRAIN, BRAIN ENGINEERING, INC., 1540 MIDLAND COURT NE, CEDAR RAPIDS, IOWA PH. (319) 294-9424

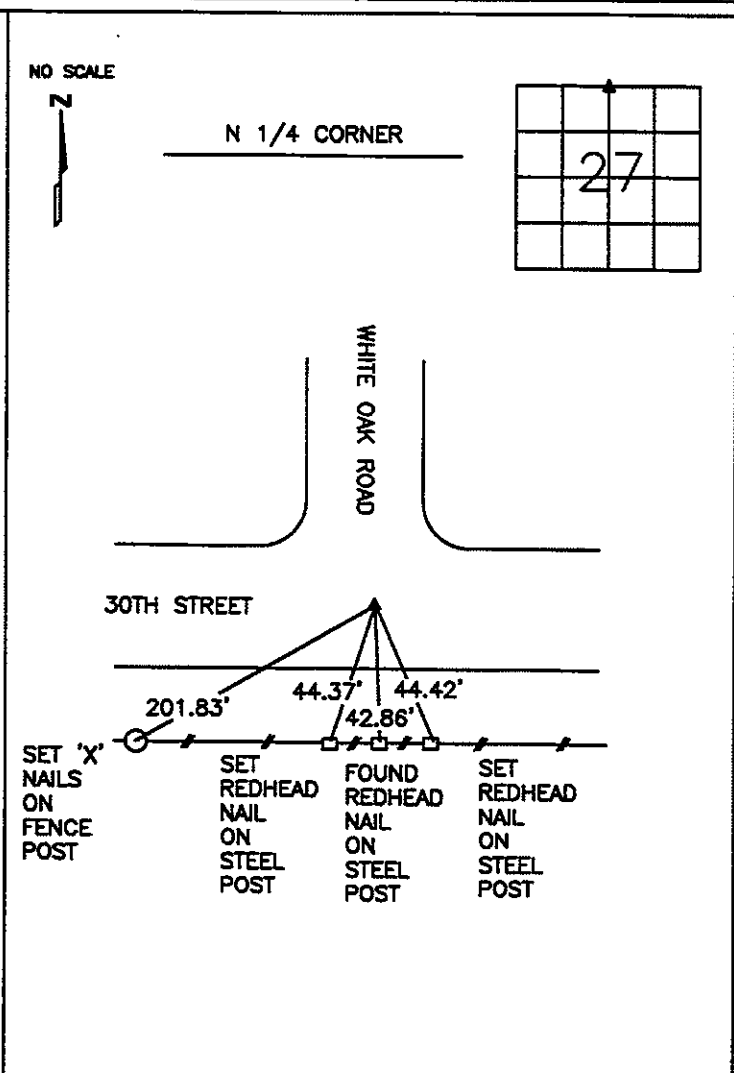
UNITED STATES PUBLIC LAND SURVEY CORNER CERTIFICATE

LAND SURVEY MONUMENTS SITUATED IN SECTION 27, TOWNSHIP 83 NORTH
 RANGE 4 WEST OF THE 5TH P.M., JONES COUNTY, IOWA.



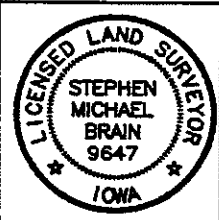
PREVIOUSLY RECORDED IN BOOK _____ PAGE _____

MONUMENT DESCRIPTION AND HOW ESTABLISHED _____
 FOUND $\frac{3}{8}$ " REBAR IN THE CENTERLINES OF 30TH STREET AND 220TH AVENUE, 6" DEEP. REBAR WAS REFERENCED IN PLAT OF SURVEY PARCEL 2002-02 FROM JONES COUNTY RECORDER'S OFFICE PLAT BOOK 0 PAGE 160.



PREVIOUSLY RECORDED IN BOOK _____ PAGE _____

MONUMENT DESCRIPTION AND HOW ESTABLISHED _____
 FOUND $\frac{5}{8}$ " REBAR IN THE CENTERLINES OF 30TH STREET AND WHITE OAK ROAD, 6" DEEP. REBAR WAS REFERENCED IN PLAT OF SURVEY PARCEL 2002-02 FROM JONES COUNTY RECORDER'S OFFICE PLAT BOOK 0 PAGE 160.



I hereby certify that this land surveying document and the related survey work was performed by me or under my direct personal supervision and that I am a duly licensed Land Surveyor under the laws of the State of Iowa.
 Signed: *[Signature]* Date: 12/3/12
 Stephen Michael Brain, L.S.
 My License Renewal Date is December 31, 2012
 License Number 9647
 Pages or sheets covered by this set: 1/1

- A.THERE IS NO CERTIFICATE FOR THE CORNER ON FILE WITH THE RECORDER OF THE COUNTY IN WHICH THE CORNER IS LOCATED
- B.THE SURVEYOR IN RESPONSIBLE CHARGE OF THE LAND SURVEYING ACCEPTS A CORNER POSITION WHICH DIFFERS FROM THAT SHOWN IN THE PUBLIC RECORDS OF THE COUNTY IN WHICH THE CORNER IS LOCATED.
- C.THE CORNER MONUMENT IS REPLACED OR MODIFIED IN ANY WAY.
- D.THE REFERENCE TIES REFERRED TO IN AN EXISTING PUBLIC RECORD ARE NOT CORRECT.

CORNERS TO BE INDEXED			
CORNER	SECTION	TOWNSHIP	RANGE
NW CORNER	27	T83N	R4 W
N 1/4 CORNER	27	T83N	R4 W

BRAIN ENGINEERING, INC.
 1540 MIDLAND COURT NE
 CEDAR RAPIDS, IOWA 52402 459512-10
 (319) 294-9424

fsm3

THIS IS NOT A CERTIFICATION

JONES COUNTY ENGINEER'S OFFICE, 19501 HWY. 64, ANAMOSA, IOWA, 52205 (319)462-3785

UNITED STATES PUBLIC LAND SURVEY CORNER CERTIFICATE

LAND SURVEY MONUMENTS SITUATED IN SECTION 28, TOWNSHIP 83
NORTH, RANGE 4 WEST OF THE 5TH P.M., JONES COUNTY, IOWA

CORNERS TO BE INDEXED

CORNER	SECTION	TOWNSHIP	RANGE
NORTHEAST	28	83N	4W

OFFICE FILE NO. 83428e-111403

30TH ST.

NE COR. SEC. 28-83-4
FD. CONC. MON 14" BELOW
RD. SURFACE, SET 7" IRON
PIN DIRECTLY ABOVE
AFTER 1979 GRADING.

FIELD BOOK 257
10-9-79
COUNTY SURVEY
CREW.

220TH AVE.

PREVIOUSLY RECORDED IN BOOK _____, PAGE _____
MONUMENT DESCRIPTION AND HOW ESTABLISHED _____

FOUND CONCRETE MONUMENT BELOW ROAD SURFACE, SET IRON
PIN ABOVE AND TIED OUT AS INDICATED. NE-28-83-4

replace

CORNERS TO BE INDEXED

CORNER	SECTION	TOWNSHIP	RANGE

OFFICE FILE NO. _____

PREVIOUSLY RECORDED IN BOOK _____, PAGE _____
MONUMENT DESCRIPTION AND HOW ESTABLISHED _____

CORNERS TO BE INDEXED

CORNER	SECTION	TOWNSHIP	RANGE

OFFICE FILE NO. _____

PREVIOUSLY RECORDED IN BOOK _____, PAGE _____
MONUMENT DESCRIPTION AND HOW ESTABLISHED _____

CORNERS TO BE INDEXED

CORNER	SECTION	TOWNSHIP	RANGE

OFFICE FILE NO. _____

PREVIOUSLY RECORDED IN BOOK _____, PAGE _____
MONUMENT DESCRIPTION AND HOW ESTABLISHED _____

~~I hereby declare that this plat, survey or report was made by me or under my direct personal supervision and that I am a duly registered Land Surveyor under the laws of the State of Iowa.~~

Signed: _____

SEAL

JONES COUNTY
ENGINEER'S OFFICE

19501 HWY. 64,
ANAMOSA, IOWA,
52205 (319)462-3785