

Jones County  
 Marie Krutzfield, Recorder  
**Fee Book 2010 1336**

05/24/2010 @0203PM  
 ZSC SEC COR CERT # Pages: 1  
 Book: Page: Total Fees: \$9.00

PREPARED BY: SCOTT SURVEY, INC. P.O. BOX 315 CENTER POINT IOWA 52213 319-540-5263

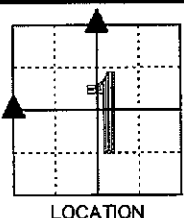
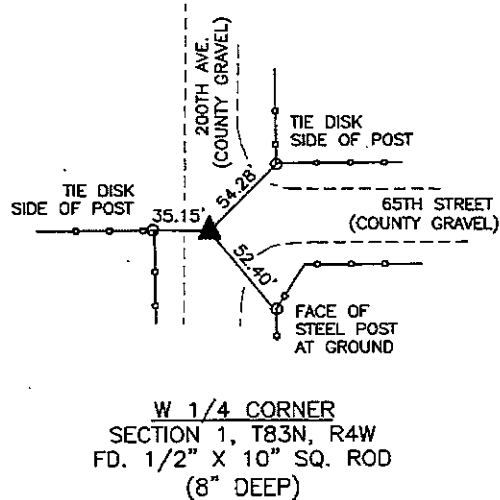
## U.S. PUBLIC LAND SURVEY CORNER CERTIFICATE

FOR LAND SURVEY MONUMENTS SITUATED IN SECTION 1, TOWNSHIP 83 NORTH, RANGE 4 WEST, OF THE FIFTH PRINCIPAL MERIDIAN, JONES COUNTY, IOWA

REASON FOR PREPARING CERTIFICATE:

- A) THERE IS NO CERTIFICATE FOR THE CORNER ON FILE WITH THE RECORDER (W 1/4 CORNER).
- B) CORNER TIES DIFFER FROM PREVIOUSLY RECORDED CERTIFICATE (N 1/4 CORNER).

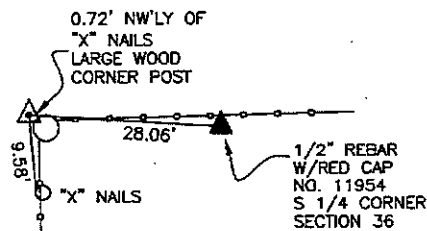
### RECOVERY TIE DRAWING



LOCATION



NOT TO SCALE



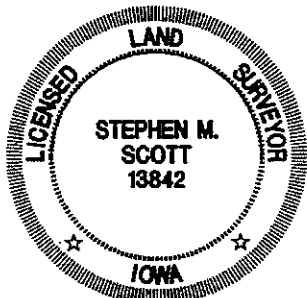
N 1/4 CORNER  
 SECTION 1, T83N, R4W  
 SET 1/2" REBAR  
 W/RED CAP NO. 13842  
 (18" DEEP)

MONUMENT DESCRIPTION AND REMARKS :

FOUND MONUMENT IN LINE WITH FENCE WEST AND AT CENTER OF ROAD NORTH-SOUTH. FITS CLOSELY WITH PRORATED DISTANCES FROM GLO NOTES ON FRACTIONAL SECTION. PROBED 24" BELOW PIN - NO STONE. (SEE PLAT OF SURVEY PARCEL 2010-42 FOR SECTION BREAKDOWN DISTANCES.)

MONUMENT DESCRIPTION AND REMARKS :

SET MONUMENT BASED ON TIES PREVIOUSLY RECORDED IN BOOK 2003, PAGE 1069 IN THE OFFICE OF THE RECORDER, JONES COUNTY, IOWA. (SCM LAYING ON SIDE NEXT TO FENCE CORNER - COMPLETELY INTACT.)



I hereby certify that this land surveying document was prepared and the related survey work was performed by me or under my direct personal supervision and that I am a duly licensed Land Surveyor under the laws of the State of Iowa.

*Stephen M. Scott* 2010  
 STEPHEN M. SCOTT, L.S. Iowa Lic. No. 13842

My license renewal date is December 31, 2010.

- GOVERNMENT CORNER
- 1/2" TIE PIN SET
- CENTERLINE
- EXISTING FENCE LINE
- R.O.W. LINE

U.S. PUBLIC LAND SURVEY CORNER CERTIFICATE

SECTION 1, T83N, R4W  
 W 1/4 CORNER  
 N 1/4 CORNER

PROJECT NO.  
 1015501