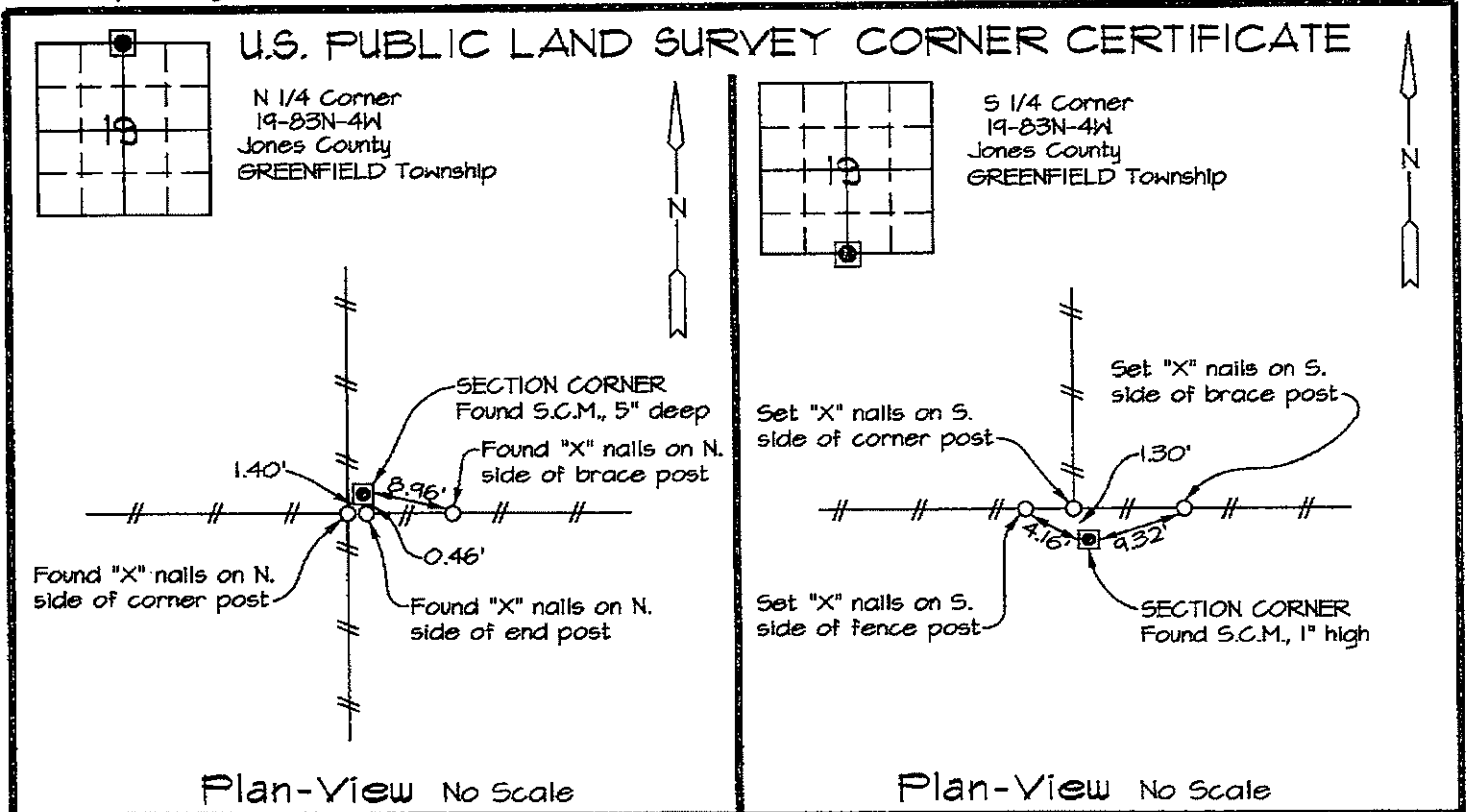


Prepared by: Richard M. Kordick, P.E., L.S., 689 185th Street Tipton, IA 52772 Phone: (563) 432-6424



Reason for corner tie:

A) There is no certificate for the corner on file with the recorder.

B) Corner position differs from previously recorded certificate recorded in book , page

C) Corner monument was replaced or modified.

D) Reference ties in previously recorded certificate recorded in book , page are incorrect or missing.

Research at the recorder's office, auditor's office, and engineer's office revealed the following:

An old corner tie in the Jones County Engineer's Office called for a S.C.M. at this corner. A plat in Recorder's Office Bk. 245 - Pg. 203 called for a "Fd. Conc. Monu." at this corner.

An old corner tie in the Jones County Engineer's Office called for a S.C.M. at this corner. A plat in Recorder's Office Bk. H - Pg. 37 called for a "Fd. S.C.M." at this corner.

Field search performed was as follows:

Field search was performed with a metal detector, probing and excavation.

Field search was performed with a metal detector and visual observation.

Monument found or set:

A S.C.M. was found and used as the corner.

A S.C.M. was found and used as the corner.

I hereby certify that this land surveying document was prepared and the related survey work was performed by me or under my direct personal supervision and that I am a duly licensed Land Surveyor under the laws of the State of Iowa.

Richard M. Kordick 2/20/2009
 Richard M. Kordick date
 License number 13657
 My license renewal date is December 31, 2009.
 Pages or sheets covered by this seal: 1 of 1

LEGEND:

- Section Corner as noted
- Power Pole
- Section line
- Centerline
- Existing Fence
- Recorded Dist.

| | | |
|---|--|---|
| <p>Kordick Surveying & Engineering 689 185th Street Tipton, IA 52772 (563) 432-6424</p> | <p>U.S. Public Land Survey Corner Certificate</p> | <p>Field BK 09014 Date 2-20-09</p> |
| | <p>Project: Plat of Survey Parcel No. 2009-25 Proprietor: Donald J. Erenberger</p> | <p>Job No. 09014 Sheet 1 of 1</p> |

THIS IS NOT A CERTIFICATION

JONES COUNTY ENGINEER'S OFFICE, 19501 HWY. 64, ANAMOSA, IOWA, 52205 (319)462-3785

UNITED STATES PUBLIC LAND SURVEY CORNER CERTIFICATE

LAND SURVEY MONUMENTS SITUATED IN SECTION 30, TOWNSHIP 83
NORTH, RANGE 4 WEST OF THE 5TH P.M., JONES COUNTY, IOWA

CORNERS TO BE INDEXED

| | | | |
|---------------------|---------------|-----------------|-------------|
| CORNER NORTHWEST | SECTION 30 | TOWNSHIP 83N | RANGE 4W |
|---------------------|---------------|-----------------|-------------|

OFFICE FILE NO.
83430a_101703.jpg

LINN COUNTY REFERENCE,
NO SKETCH OR DATE ON
CARD. PROBABLY IN THE 30s.
TIES ARE AS STATED.

360.5' N. CONTROL MARKED
53-372;
CHECK CARD FOR ADD. INFO.

PREVIOUSLY RECORDED IN BOOK _____, PAGE _____
MONUMENT DESCRIPTION AND HOW ESTABLISHED FOUND 8"x12"
X24" FLAT LIMESTONE UNDER SEC. LINE FENCES AT CENTER OF 4-
COR. POSTS 8" BELOW SURFACE IN A NEST OF 8 SMALLER STONES.
LOWERED STONE, SET STANDARD CONCRETE MONUMENT ABOVE, TOP OF
MONUMENT FLUSH W/GROUND. NORTHWEST CORNER SECTION 30,
TOWNSHIP 83 NORTH, RANGE 3 WEST, 5TH PM, JONES COUNTY, IOWA.

CORNERS TO BE INDEXED

| | | | |
|---------------------|---------------|-----------------|-------------|
| CORNER N-QUARTER | SECTION 30 | TOWNSHIP 83N | RANGE 4W |
|---------------------|---------------|-----------------|-------------|

OFFICE FILE NO.
83430c_101703.jpg

REFERENCE:
JONES COUNTY CORNER
STONE BOOK 5, PAGE 92
1936

N-QUARTER COR.
30-83-4, CONC.
MON. OVER LIMESTONE

PREVIOUSLY RECORDED IN BOOK _____, PAGE _____
MONUMENT DESCRIPTION AND HOW ESTABLISHED FOUND 12"
LIMESTONE 8" BELOW SURFACE. LOWERED STONE, SET STANDARD
CONCRETE MONUMENT DIRECTLY ABOVE. TIES AS INDICATED.
NORTH QUARTER CORNER OF SECTION 30, TOWNSHIP 83 NORTH,
RANGE 4 WEST OF THE 5TH PM, JONES COUNTY, IOWA.

CORNERS TO BE INDEXED

| | | | |
|---------------------|---------------|-----------------|-------------|
| CORNER NORTHEAST | SECTION 30 | TOWNSHIP 83N | RANGE 4W |
|---------------------|---------------|-----------------|-------------|

OFFICE FILE NO.
83430e_101703.jpg

REF:
JONES COUNTY MISC. BOOK 1973, PAGE 14

4-23-73
7-7-77
JONES COUNTY SURVEY CREW

NE-30-86-4
(1936) FD. STONE
SET SCM ABOVE.
1977 FD. BROKEN
SCM.

CONTROL MON.
53-366-(GONE)

PREVIOUSLY RECORDED IN BOOK _____, PAGE _____
MONUMENT DESCRIPTION AND HOW ESTABLISHED FOUND STONE
IN 1936, SET STANDARD CONCRETE MONUMENT ABOVE. RECOVERED IN
1973, RECOVERED BROKEN MONUMENT IN 1977 AND TIED AS INDICATED
NORTHEAST CORNER SECTION 30, TOWNSHIP 83 NORTH, RANGE 4 WEST
OF THE 5TH PM, JONES COUNTY, IOWA.

CORNERS TO BE INDEXED

| | | | |
|--------|---------|----------|-------|
| CORNER | SECTION | TOWNSHIP | RANGE |
|--------|---------|----------|-------|

OFFICE FILE NO.

PREVIOUSLY RECORDED IN BOOK _____, PAGE _____
MONUMENT DESCRIPTION AND HOW ESTABLISHED _____

~~I hereby declare that this plat, survey or report was made by me or under my direct personal supervision and that I am a duly registered Land Surveyor under the laws of the State of Iowa.~~

Signed: _____

SEAL

JONES COUNTY
ENGINEER'S OFFICE

19501 HWY. 64,
ANAMOSA, IOWA,
52205 (319)462-3785

8