

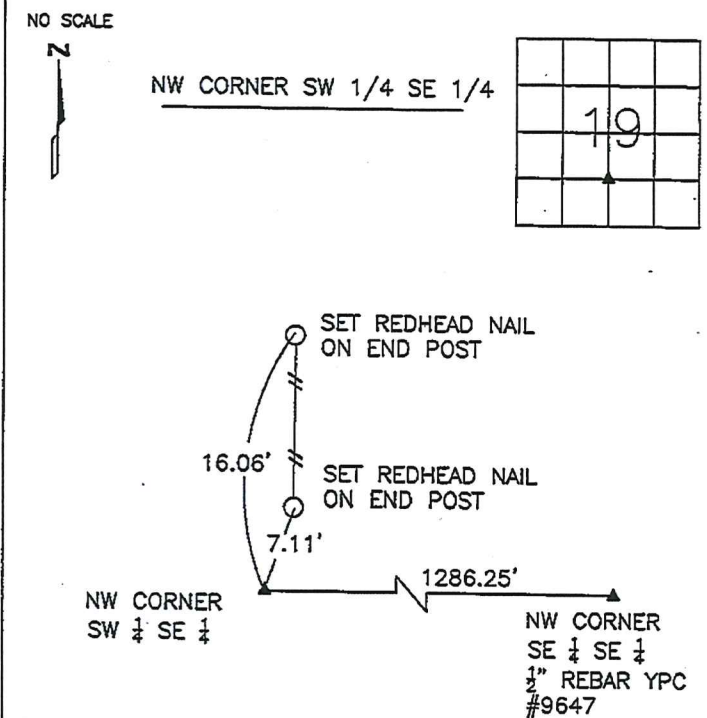
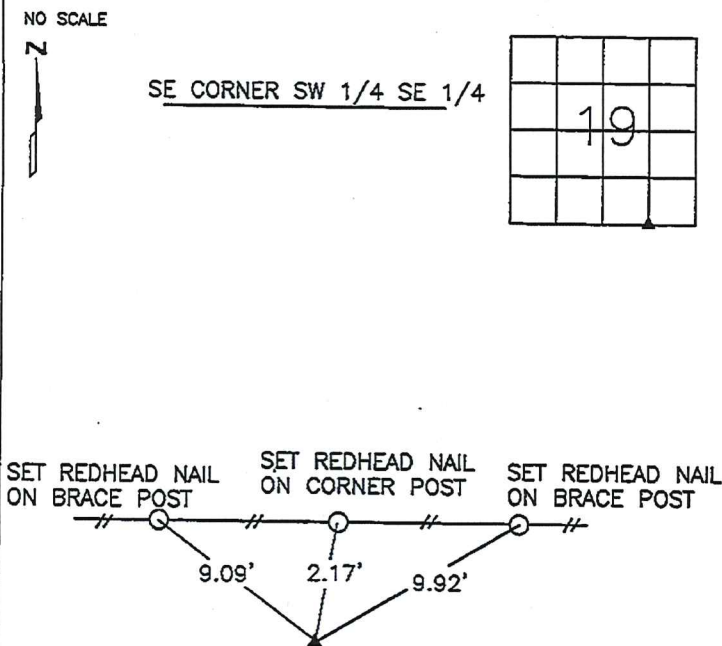
Instrument #: 2014-3251
 12/15/2014 10:54:47 AM Total Pages: 1
 ZSC SECTION CORNER CERTIFICATE
 Recording Fee: \$7.00 Transfer Tax: \$0
 Marie Krutzfield, Recorder, Jones County Iowa



PREPARED BY
 STEPHEN MICHAEL BRAIN, BRAIN ENGINEERING, INC., 1540 MIDLAND COURT NE, CEDAR RAPIDS, IOWA PH. (319) 294-9424

UNITED STATES PUBLIC LAND SURVEY CORNER CERTIFICATE

LAND SURVEY MONUMENTS SITUATED IN SECTION 19, TOWNSHIP 83 NORTH
 RANGE 4 WEST OF THE 5TH P.M., JONES COUNTY, IOWA.



PREVIOUSLY RECORDED IN BOOK _____ PAGE _____

MONUMENT DESCRIPTION AND HOW ESTABLISHED _____
 SET 1/2" REBAR WITH YELLOW PLASTIC CAP #9647 AT THE MIDPOINT ON THE LINE BETWEEN THE S 1/4 CORNER AND THE SE CORNER OF SECTION 19-83-4

PREVIOUSLY RECORDED IN BOOK _____ PAGE _____

MONUMENT DESCRIPTION AND HOW ESTABLISHED _____
 SET 1/2" REBAR WITH YELLOW PLASTIC CAP #9647 AT THE MIDPOINT ON THE LINE BETWEEN THE CENTER AND THE S 1/4 CORNER OF SECTION 19-83-4



I hereby certify that this land surveying document and the related survey work was performed by me or under my direct personal supervision and that I am a duly licensed Land Surveyor under the laws of the State of Iowa.
 Signed: *[Signature]* Date: 12/12/14
 Stephen Michael Brain, L.S.
 My License Renewal Date is December 31, 2014
 License Number 9647
 Pages or sheets covered by this seal: 1/1

- A. THERE IS NO CERTIFICATE FOR THE CORNER ON FILE WITH THE RECORDER OF THE COUNTY IN WHICH THE CORNER IS LOCATED
- B. THE SURVEYOR IN RESPONSIBLE CHARGE OF THE LAND SURVEYING ACCEPTS A CORNER POSITION WHICH DIFFERS FROM THAT SHOWN IN THE PUBLIC RECORDS OF THE COUNTY IN WHICH THE CORNER IS LOCATED.
- C. THE CORNER MONUMENT IS REPLACED OR MODIFIED IN ANY WAY.
- D. THE REFERENCE TIES REFERRED TO IN AN EXISTING PUBLIC RECORD ARE NOT CORRECT.

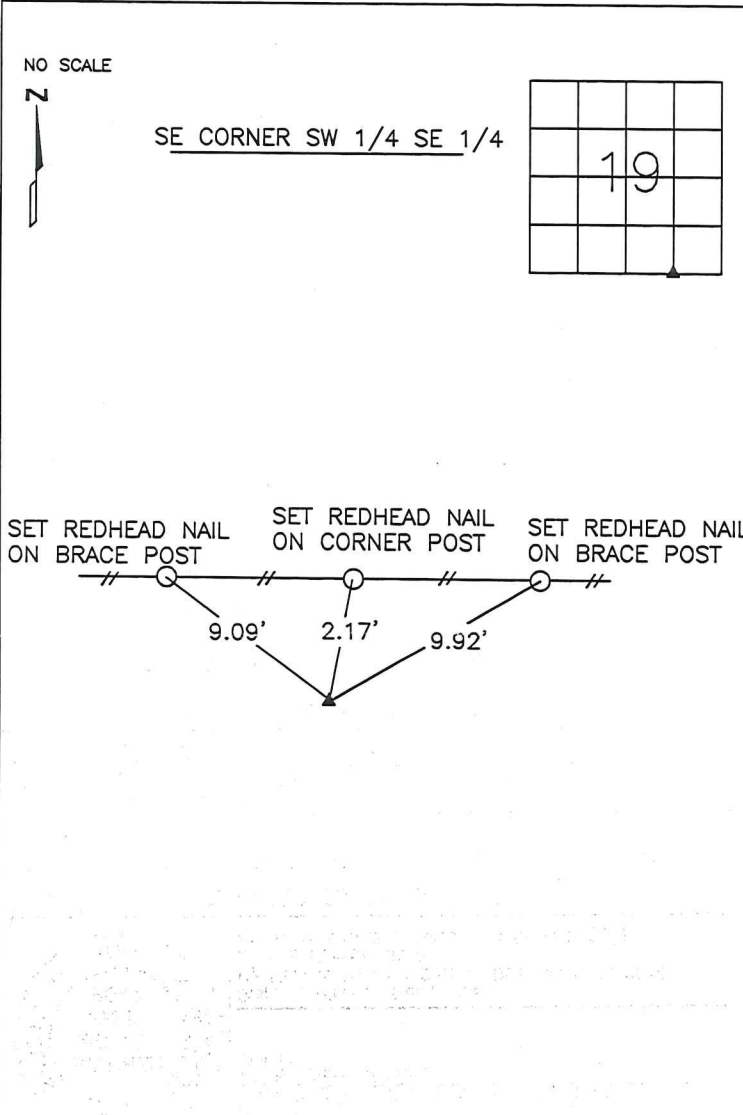
CORNERS TO BE INDEXED			
CORNER	SECTION	TOWNSHIP	RANGE
SE CORNER	19	T83N	R4 W
SW 1/4 SE 1/4			
NW CORNER	19	T83N	R4 W
SW 1/4 SE 1/4			

BRAIN ENGINEERING, INC.
 1540 MIDLAND COURT NE
 CEDAR RAPIDS, IOWA 52402 284914-70
 (319) 294-9424

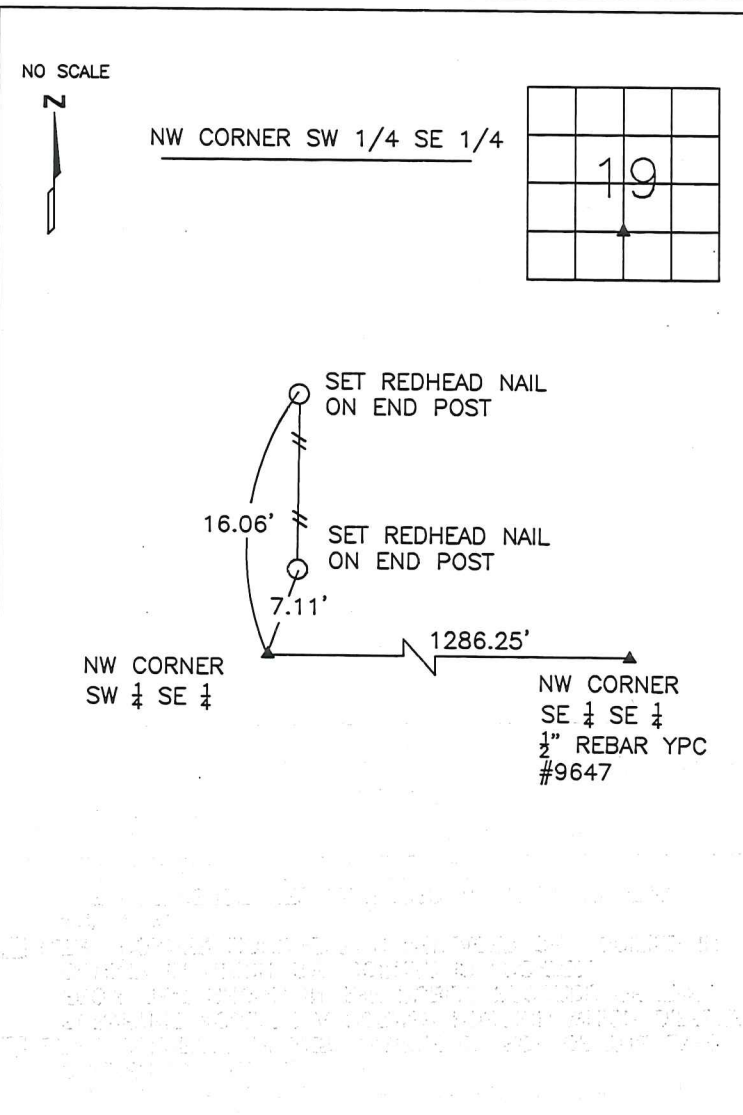
PREPARED BY
 STEPHEN MICHAEL BRAIN, BRAIN ENGINEERING, INC., 1540 MIDLAND COURT NE, CEDAR RAPIDS, IOWA PH. (319) 294-9424

UNITED STATES PUBLIC LAND SURVEY CORNER CERTIFICATE

LAND SURVEY MONUMENTS SITUATED IN SECTION 19, TOWNSHIP 83 NORTH
 RANGE 4 WEST OF THE 5TH P.M., JONES COUNTY, IOWA.



PREVIOUSLY RECORDED IN BOOK _____ PAGE _____
 MONUMENT DESCRIPTION AND HOW ESTABLISHED _____
 SET 1/2" REBAR WITH YELLOW PLASTIC CAP #9647 AT THE MIDPOINT ON THE LINE BETWEEN THE S 1/4 CORNER AND THE SE CORNER OF SECTION 19-83-4



PREVIOUSLY RECORDED IN BOOK _____ PAGE _____
 MONUMENT DESCRIPTION AND HOW ESTABLISHED _____
 SET 1/2" REBAR WITH YELLOW PLASTIC CAP #9647 AT THE MIDPOINT ON THE LINE BETWEEN THE CENTER AND THE S 1/4 CORNER OF SECTION 19-83-4



I hereby certify that this land surveying document and the related survey work was performed by me or under my direct personal supervision and that I am a duly licensed Land Surveyor under the laws of the State of Iowa.
 Signed _____ Date 12/12/14
 Stephen Michael Brain, L.S.
 My License Renewal Date is December 31, 2014
 License Number 9647
 Pages or sheets covered by this seal: 1/1

- A.THERE IS NO CERTIFICATE FOR THE CORNER ON FILE WITH THE RECORDER OF THE COUNTY IN WHICH THE CORNER IS LOCATED
- B.THE SURVEYOR IN RESPONSIBLE CHARGE OF THE LAND SURVEYING ACCEPTS A CORNER POSITION WHICH DIFFERS FROM THAT SHOWN IN THE PUBLIC RECORDS OF THE COUNTY IN WHICH THE CORNER IS LOCATED.
- C.THE CORNER MONUMENT IS REPLACED OR MODIFIED IN ANY WAY.
- D.THE REFERENCE TIES REFERRED TO IN AN EXISTING PUBLIC RECORD ARE NOT CORRECT.

CORNERS TO BE INDEXED			
CORNER	SECTION	TOWNSHIP	RANGE
SE CORNER	19	T83N	R4 W
SW 1/4 SE 1/4			
NW CORNER	19	T83N	R4 W
SW 1/4 SE 1/4			

BRAIN ENGINEERING, INC.
 1540 MIDLAND COURT NE
 CEDAR RAPIDS, IOWA 52402 284914-70
 (319) 294-9424