

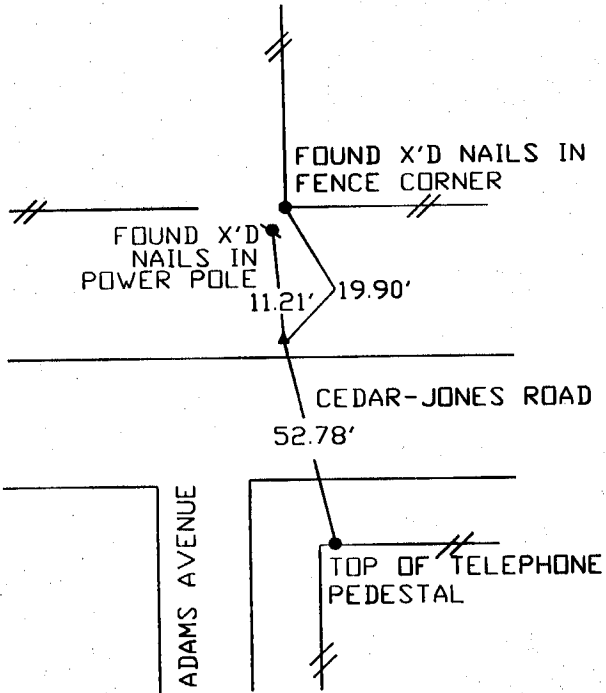
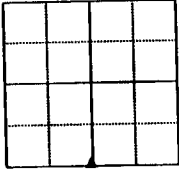
UNITED STATES PUBLIC LAND SURVEY CORNER CERTIFICATE

LAND SURVEY MONUMENTS SITUATED IN SECTION 31, TOWNSHIP 83 NORTH
RANGE 4 WEST OF THE 5TH P.M., JONES COUNTY, IOWA.

NO SCALE



S 1/4



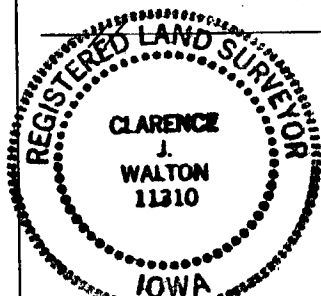
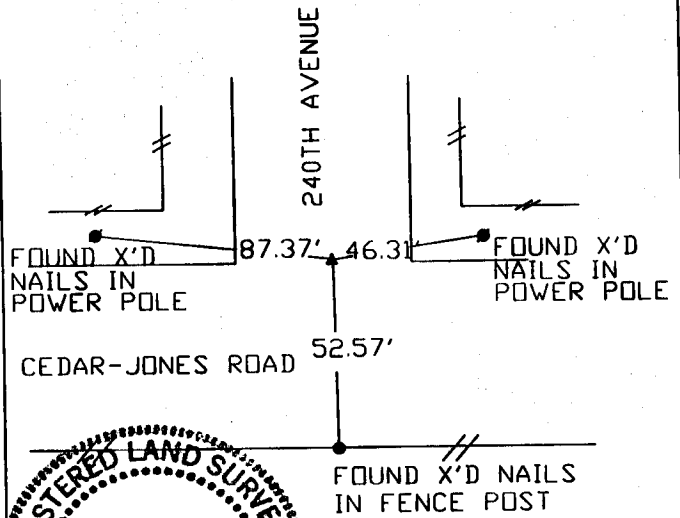
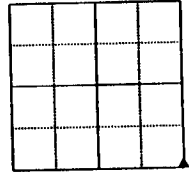
PREVIOUSLY RECORDED IN BOOK _____ PAGE _____
MONUMENT DESCRIPTION AND HOW ESTABLISHED _____
FOUND BROKEN MONUMENT 8" DEEP IN DITCH.

DONE

NO SCALE



SE CORNER



PREVIOUSLY RECORDED IN BOOK _____ PAGE _____
MONUMENT DESCRIPTION AND HOW ESTABLISHED _____
FOUND 1" REBAR 8" BELOW SURFACE.

I hereby declare that this plat, survey or report was made by me or under my direct personal supervision and that I am a duly registered Land Surveyor under the laws of the State of Iowa.

Signed Clarence J. Walton Date 7/2/99
Clarence J. Walton L.S. Iowa Reg No. 11310
My Registration Renewal Date Is December 31, 1999

CORNERS TO BE INDEXED <i>DONE</i>			
CORNER	SECTION	TOWNSHIP	RANGE
S 1/4	31	T83N	R4W
SE CORNER	31	T83N	R4W

BRAIN ENGINEERING, INC.

777 10TH STREET
MARION, IOWA 52302
(319) 373-1318

23289-10

8343/w - 040299, 8343/y - 040299