

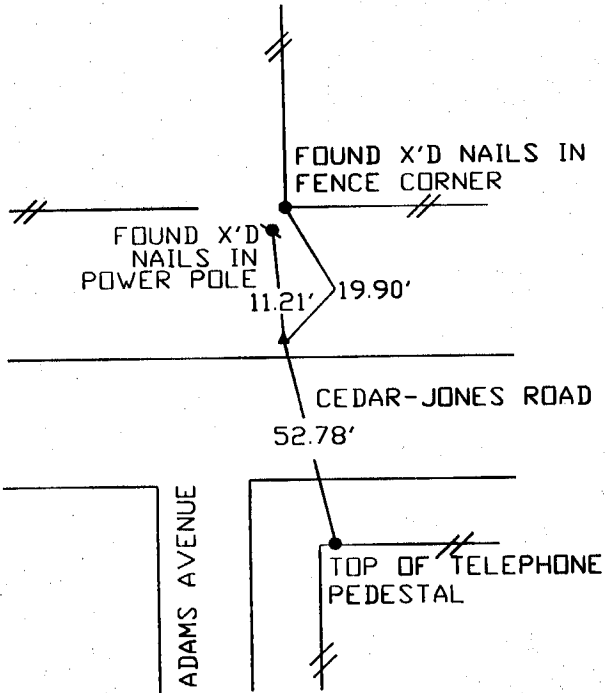
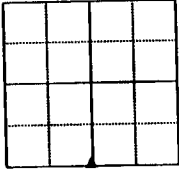
# UNITED STATES PUBLIC LAND SURVEY CORNER CERTIFICATE

LAND SURVEY MONUMENTS SITUATED IN SECTION 31, TOWNSHIP 83 NORTH  
RANGE 4 WEST OF THE 5TH P.M., JONES COUNTY, IOWA.

NO SCALE



S 1/4



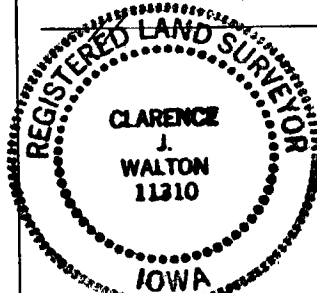
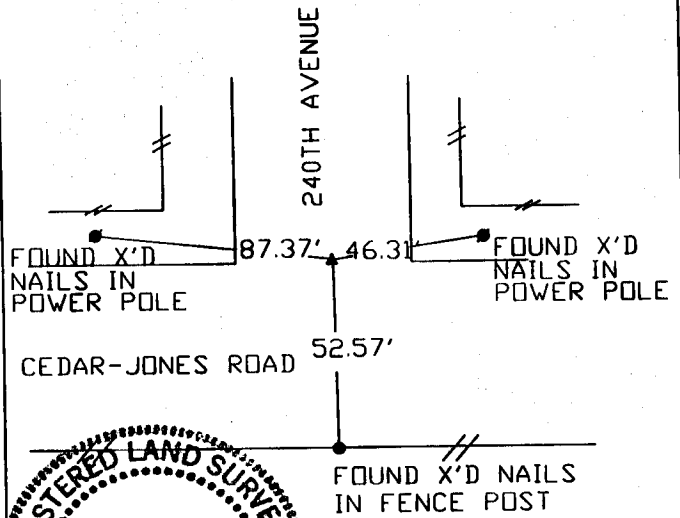
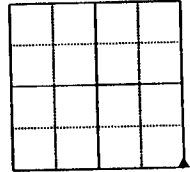
PREVIOUSLY RECORDED IN BOOK \_\_\_\_\_ PAGE \_\_\_\_\_  
MONUMENT DESCRIPTION AND HOW ESTABLISHED \_\_\_\_\_  
FOUND BROKEN MONUMENT 8" DEEP IN DITCH.

*DONE*

NO SCALE



SE CORNER



PREVIOUSLY RECORDED IN BOOK \_\_\_\_\_ PAGE \_\_\_\_\_  
MONUMENT DESCRIPTION AND HOW ESTABLISHED \_\_\_\_\_  
FOUND 1" REBAR 8" BELOW SURFACE

I hereby declare that this plat, survey or report was made by me or under my direct personal supervision and that I am a duly registered Land Surveyor under the laws of the State of Iowa.

Signed Clarence J. Walton Date 7/2/99  
Clarence J. Walton L.S. Iowa Reg No. 11310  
My Registration Renewal Date Is December 31, 1999

CORNERS TO BE INDEXED <i>DONE</i>			
CORNER	SECTION	TOWNSHIP	RANGE
S 1/4	31	T83N	R4W
SE CORNER	31	T83N	R4W

**BRAIN ENGINEERING, INC.**

777 10TH STREET  
MARION, IOWA 52302  
(319) 373-1318

23289-10

83431w-040299, 83431y-040299

# UNITED STATES PUBLIC LAND SURVEY CORNER CERTIFICATE

OF

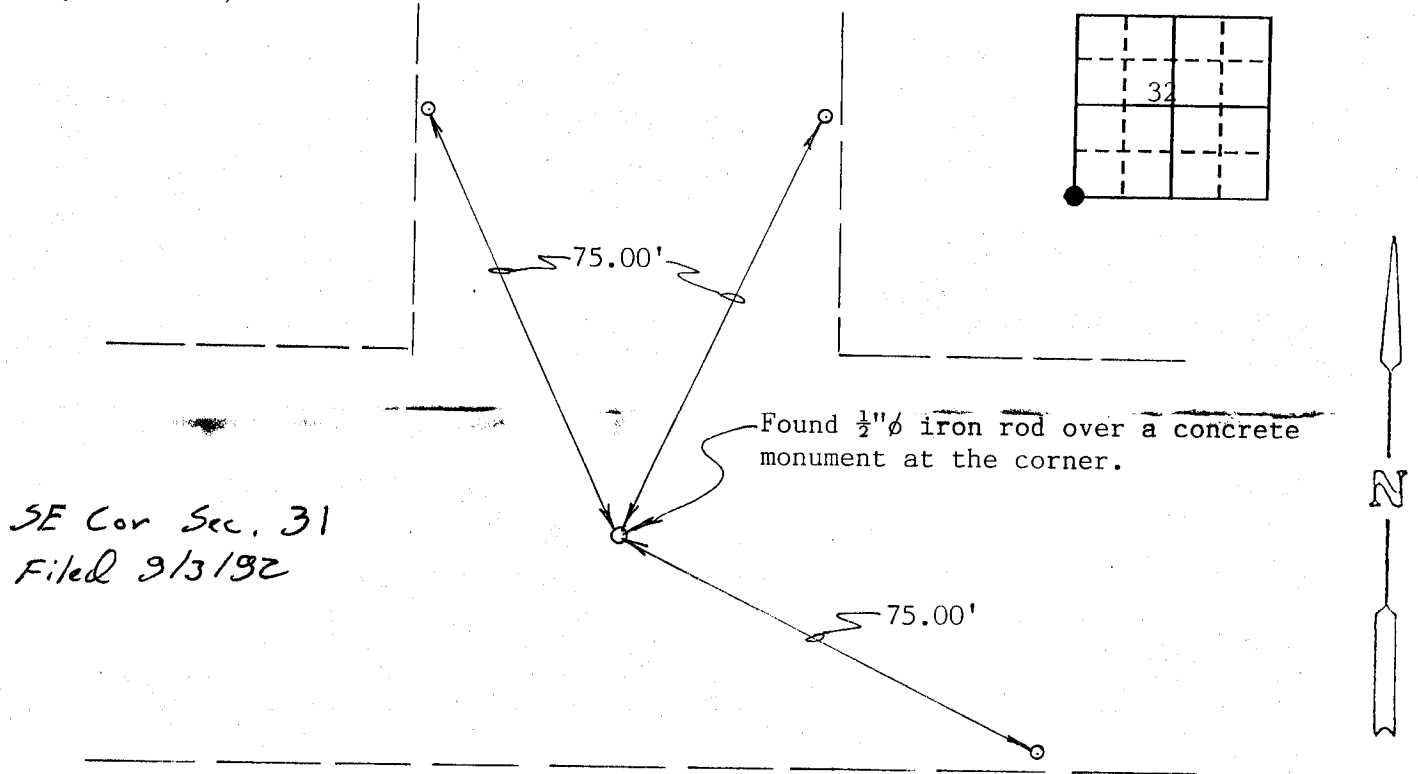
Land Survey Monuments situated in Section 32, Township 83 North, Range 4 West, of the Fifth Principal Meridian, Jones County, Iowa.  
Previously recorded in no corner certificate on file in County Recorder's Office.  
(book, page, document number, etc.)

(Show reason for preparing this certificate, the evidence and detailed procedures used in establishing the corner positions and monumentation found or placed.)

Monument Description and Remarks: Found 1/2"  $\phi$  iron rod over concrete monument at the corner.

### PLAN - VIEW

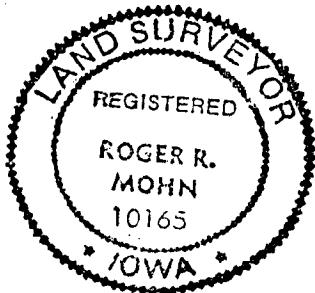
(Show a minimum of three reference ties to durable physical objects, relevant monuments and physical conditions that will enable recovery of the corner.)



I hereby certify that the survey work was completed and this certificate was prepared by me or under my direct personal supervision and that I am a duly registered land surveyor under the laws of the state of Iowa.

Signature: Roger R. Mohn  
Name typed or printed: Roger R. Mohn

Date: August 22, 1992 Reg. No. 10165



Corners	List Corners to be Indexed		
	Section	Twp	Range
SW Cor.	32	83N	4W

83431y-082292