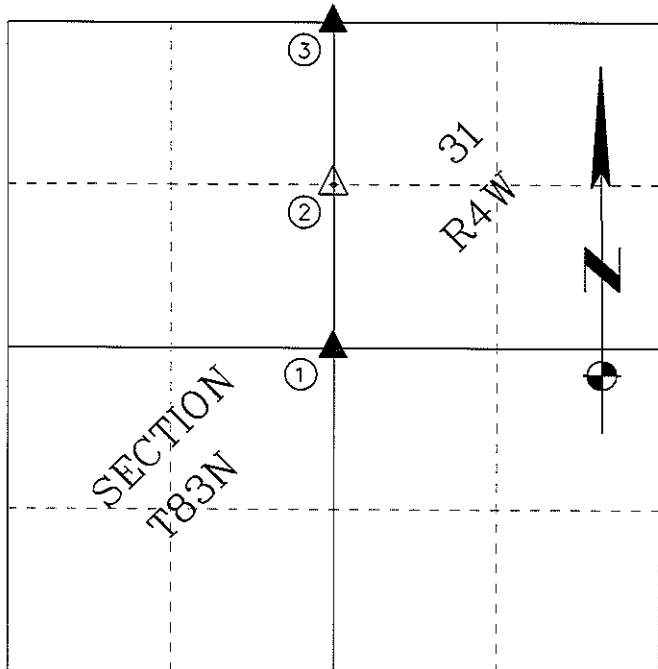


Marie Krutzfield, Recorder
Jones County, Iowa

PREPARED BY HALL & HALL ENGINEERS, INC. 1860 BOYSON ROAD HIAWATHA, IOWA 52402 (319) 362-9548

SECTION CORNER INDEX



U.S. PUBLIC LAND SURVEY CORNER CERTIFICATE

LAND SURVEY MONUMENTS SITUATED IN SECTION 31, TOWNSHIP 83 NORTH, RANGE 4 WEST, OF THE FIFTH PRINCIPAL MERIDIAN, JONES COUNTY IOWA.

REASON FOR PREPARING CERTIFICATE:

- (A) THERE IS NO CERTIFICATE FOR THE CORNER ON FILE WITH THE RECORDER OF THE COUNTY IN WHICH THE CORNER IS LOCATED.
- B) CORNER POSITION DIFFERS FROM THAT SHOWN IN THE PUBLIC RECORDS OF THE COUNTY IN WHICH THE CORNER IS LOCATED.
- C) THE CORNER MONUMENT HAS BEEN REPLACED OR MODIFIED.
- D) THE REFERENCE TIES REFERRED TO IN AN EXISTING PUBLIC RECORD ARE INCORRECT OR MISSING.

LICENSED LAND SURVEYOR
WADE D. WAMRE
17565
IOWA

I hereby certify that this land surveying document was prepared and the related survey work was performed by me or under my direct personal supervision and that I am a duly licensed Land Surveyor under the laws of the State of Iowa.

Signed: Wade D. Wamre Date: 10/10/06

Wade D. Wamre P.L.S., 17565
My license renewal date is December 31, 2006

Pages or sheets covered by this seal: 1

