

2003 1079

FILED
RECORDERS OFFICE
JONES COUNTY IOWA

03 MAR 13 PM 1:25

MARIE KRUTZFIELD 6.00Pd
RECORDER

PREPARED BY HALL & HALL ENGINEERS, INC. 209 28TH STREET N.E. CEDAR RAPIDS, IOWA 52402 (319) 382-8548

SECTION CORNER CERTIFICATE

OF
LAND SURVEY MONUMENTS SITUATED IN SECTION 32, TOWNSHIP 83 NORTH,
RANGE 4 WEST, OF THE FIFTH PRINCIPAL MERIDIAN, JONES COUNTY, IOWA.

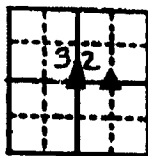
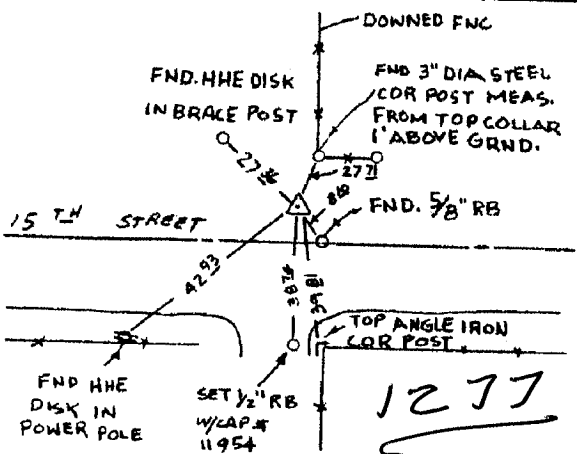
PREVIOUSLY RECORDED IN BOOK _____ AT PAGE _____

MONUMENT DESCRIPTION AND REMARKS:

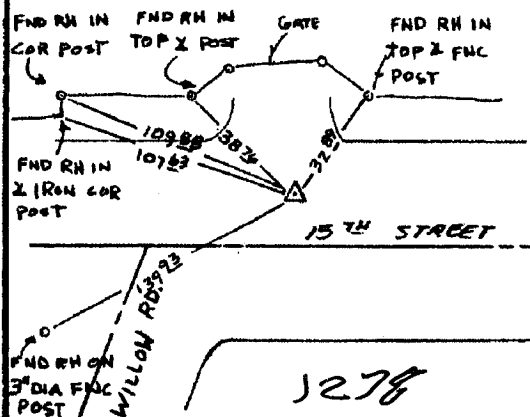
CENTER SEC. 32-83-4, SET 1/2" REBAR W/CAP # 11954 03 DEEP 6± N OF E &
6± W OF FNC N & S
NE COR NW 1/4 SE 1/4 SEC 32-83-4, SET 1/2" RB W/CAP # 11954 03 DEEP
2' S. OF N EDGE GRAVEL

RECOVERY TIE DRAWING

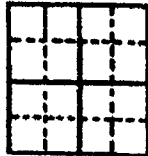
CENTER SEC 32-83-4



NE COR NW 1/4 SE 1/4 32-83-4



B3432h-022703



B3432h-022703



I hereby certify that this land surveying document was prepared and the related survey work was performed by me or under my direct personal supervision and that I am a duly licensed Land Surveyor under the laws of the State of Iowa.

Surveyor: *Daniel J. Johnson* Date: 2-27-03

Daniel J. Johnson, L.S. #11054
My license renewed 1/6 to December 31, 2004

Pages or sheets covered by this cost: 1
(Entire submission unless specified here)

REASON FOR PREPARING CERTIFICATE:

- A) THERE IS NO CERTIFICATE FOR THE CORNER ON FILE WITH THE RECORDER OF THE COUNTY IN WHICH THE CORNER IS LOCATED
- B) CORNER POSITION DIFFERS FROM THAT SHOWN IN THE PUBLIC RECORDS OF THE COUNTY IN WHICH THE CORNER IS LOCATED.
- C) THE CORNER MONUMENT HAS BEEN REPLACED OR MODIFIED
- D) THE REFERENCE TIES REFERRED TO IN AN EXISTING PUBLIC RECORD ARE INCORRECT

PROPERTY CORNER
PROPERTY CORNER IOWA
1/2" 150' W/ LS CAP SET
EXISTING FENCE LINE
PROPERTY LINE

US PUBLIC LAND SURVEY RECORD
YOUNGBLUT, WAYNE

HALL AND HALL ENGINEERS, INC.
709 28TH STREET N.E.
CEDAR RAPIDS, IOWA 52402
(319) 382-8548

DATE: 12/29/1998
SCALE: NTS
SHEET: 0751
PAGE: 6549