

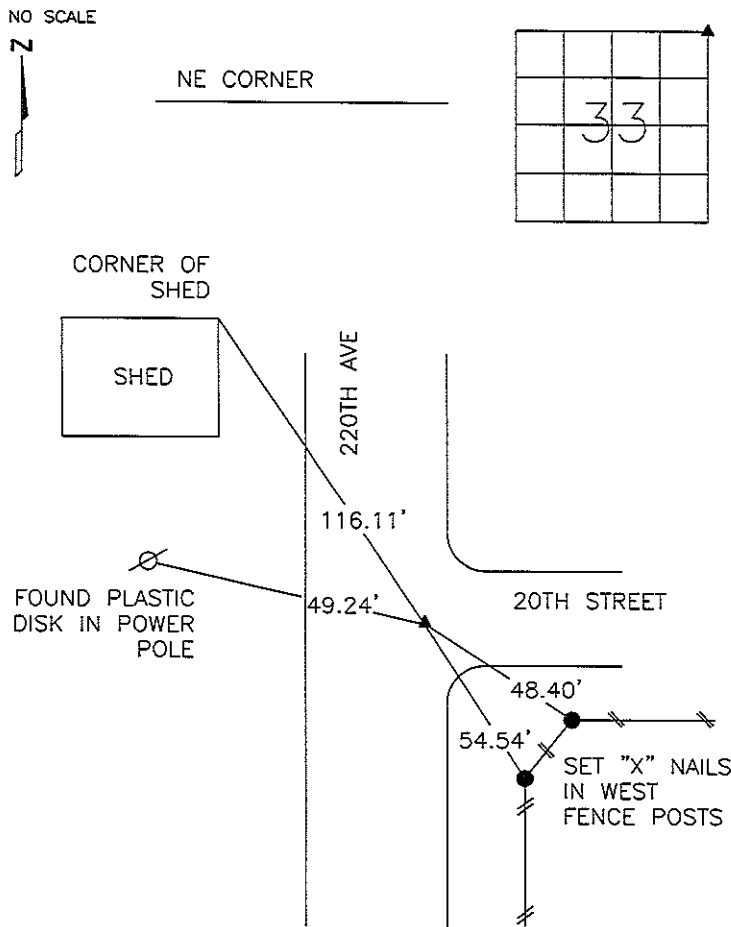
COF

Marie Krutzfield, Recorder
 Jones County, Iowa

PREPARED BY
 STEPHEN MICHAEL BRAIN, BRAIN ENGINEERING, INC., 1540 MIDLAND COURT NE, CEDAR RAPIDS, IOWA PH. (319) 294-9424

UNITED STATES PUBLIC LAND SURVEY CORNER CERTIFICATE

LAND SURVEY MONUMENTS SITUATED IN SECTION 33, TOWNSHIP 83 NORTH
 RANGE 4 WEST OF THE 5TH P.M., JONES COUNTY, IOWA.



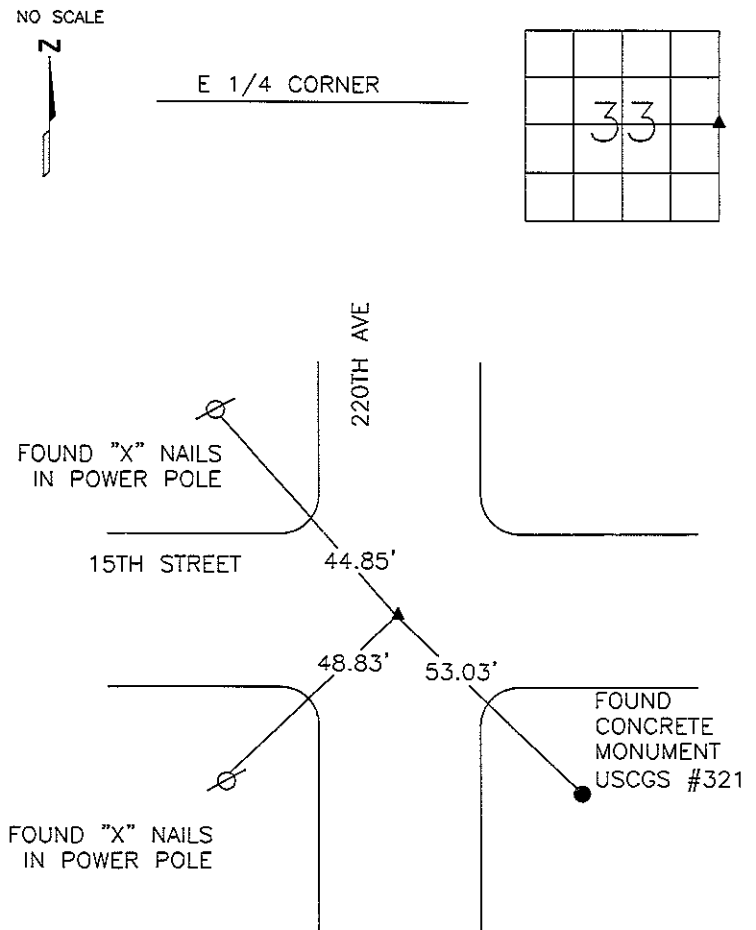
SEE NOTE "D" BELOW

OPC: ORANGE PLASTIC CAP

PREVIOUSLY RECORDED IN BOOK 2003 PAGE 3747

MONUMENT DESCRIPTION AND HOW ESTABLISHED _____

FOUND 5/8" REBAR W/ OPC #14807



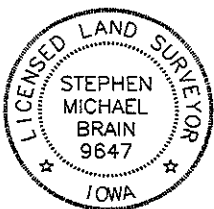
SEE NOTE "A" BELOW

RPC: RED PLASTIC CAP

PREVIOUSLY RECORDED IN BOOK _____ PAGE _____

MONUMENT DESCRIPTION AND HOW ESTABLISHED _____

FOUND 1/2" REBAR W/ RPC



I hereby certify that this land surveying document and the related survey work was performed by me or under my direct personal supervision and that I am a duly licensed Land Surveyor under the laws of the State of Iowa.

Signed: *[Signature]* Date: 1/29/06
 Stephen Michael Brain, L.S.
 My License Renewal Date is December 31, 2006
 License Number 9647
 Pages or sheets covered by this seal: 1/1

- A.THERE IS NO CERTIFICATE FOR THE CORNER ON FILE WITH THE RECORDER OF THE COUNTY IN WHICH THE CORNER IS LOCATED
- B.THE SURVEYOR IN RESPONSIBLE CHARGE OF THE LAND SURVEYING ACCEPTS A CORNER POSITION WHICH DIFFERS FROM THAT SHOWN IN THE PUBLIC RECORDS OF THE COUNTY IN WHICH THE CORNER IS LOCATED.
- C.THE CORNER MONUMENT IS REPLACED OR MODIFIED IN ANY WAY.
- D.THE REFERENCE TIES REFERRED TO IN AN EXISTING PUBLIC RECORD HAVE CHANGED.

CORNERS TO BE INDEXED			
CORNER	SECTION	TOWNSHIP	RANGE
NE CORNER	33	T83N	R4W
E 1/4 CORNER	33	T83N	R4W

BRAIN ENGINEERING, INC.

1540 MIDLAND COURT NE
 CEDAR RAPIDS, IOWA 52402
 (319) 294-9424

366406-10

PREPARED BY HALL & HALL ENGINEERS, INC. 209 29TH STREET N.E. CEDAR RAPIDS, IOWA 52402 (319) 362-9548
SECTION CORNER CERTIFICATE

OF
 LAND SURVEY MONUMENTS SITUATED IN SECTION 34, TOWNSHIP 83 NORTH,
 RANGE 4 WEST, OF THE FIFTH PRINCIPAL MERIDIAN, JONES COUNTY, IOWA.

PREVIOUSLY RECORDED IN BOOK _____ AT PAGE _____

REASON FOR PREPARING CERTIFICATE:

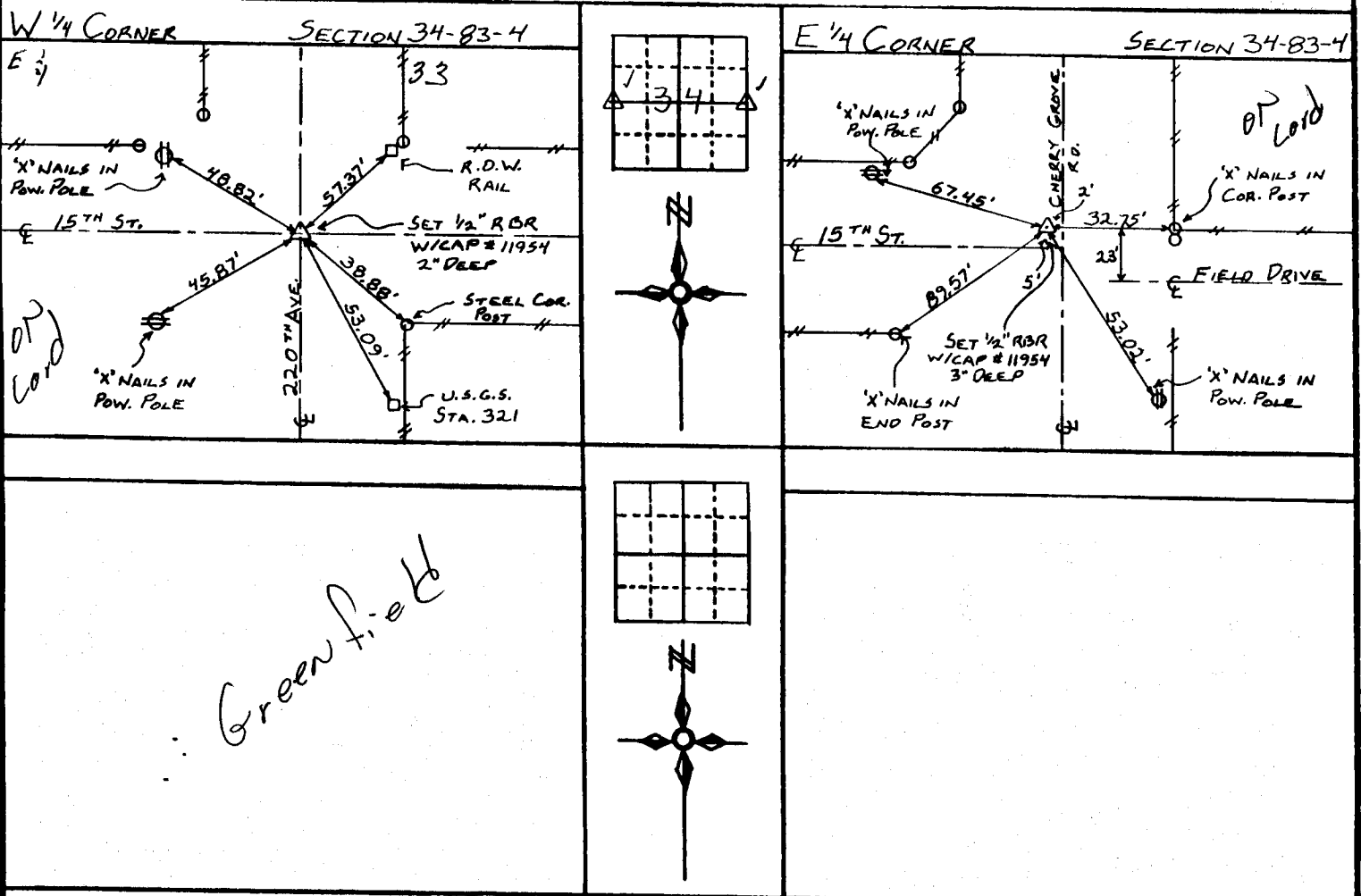
- A) THERE IS NO CERTIFICATE FOR THE CORNER ON FILE WITH THE RECORDER OF THE COUNTY IN WHICH THE CORNER IS LOCATED.
- B) CORNER POSITION DIFFERS FROM THAT SHOWN IN THE PUBLIC RECORDS OF THE COUNTY IN WHICH THE CORNER IS LOCATED.
- C) THE CORNER MONUMENT HAS BEEN REPLACED OR MODIFIED
- D) THE REFERENCE TIES REFERRED TO IN AN EXISTING PUBLIC RECORD ARE INCORRECT

MONUMENT DESCRIPTION AND REMARKS:

W 1/4 COR. SEC. 34-83-4: SET 1/2" REBAR W/CAP # 11954 2" DEEP, E- E 15TH ST. & 220TH AVE.
 E 1/4 33

E 1/4 COR. SEC. 34-83-4: SET 1/2" REBAR W/CAP # 11954 3" DEEP, 2' WEST OF E CHERRY GROVE RD & 5' NORTH OF E 15TH ST.

RECOVERY TIE DRAWING



I, DANIEL J. JOHNSON, - CERTIFY THAT THE CORNER LOCATION(S) SHOWN ON THIS RECORD WERE DETERMINED BY ME OR UNDER MY DIRECTION AND CONTROL AND THAT THIS U S PUBLIC LAND SURVEY MONUMENT RECORD IS CORRECT AND COMPLETE TO THE BEST OF MY KNOWLEDGE AND BELIEF.

Daniel Johnson 10-27-97
 DANIEL J. JOHNSON / L.S. NO. 11954 DATE



MY LICENSE RENEWAL DATE IS DECEMBER 31, 1998

834330-102797
 834340-102797

LEGEND △ GOVERNMENT CORNER ● PROPERTY CORNER FOUND ○ 1/2" X 3/4" W/ L.S. CAP SET --- EXISTING FENCE LINE --- PROPERTY LINE	SHEET TITLE: U.S. PUBLIC LAND SURVEY RECORD	HALL AND HALL ENGINEERS, INC. 209 29TH STREET N.E. CEDAR RAPIDS, IOWA 52402 (319) 362-9548
	PROJECT TITLE: MECHANICSVILLE TRUST & SAVINGS BANK	
DRAWN BY: JWP	CHECKED BY: JSR	SCALE: NONE
DATE: 4/19/94	SHEET NO: 1100	PROJECT NO: E100