

2003 3747

FILED
RECORDERS OFFICE
JONES COUNTY IOWA

03 AUG -6 AM 9:13

MARIE KRUTZFIELD
RECORDER *No Fee*

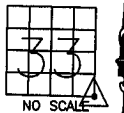
J.D. TJEPKES, LS. JONES COUNTY ENGINEER'S OFFICE, 19501 HWY. 64, ANAMOSA, IOWA, 52205 (319)462-3785

UNITED STATES PUBLIC LAND SURVEY CORNER CERTIFICATE

LAND SURVEY MONUMENTS SITUATED IN SECTION 33, TOWNSHIP 83
NORTH, RANGE 4 WEST OF THE 5TH P.M., JONES COUNTY, IOWA

CORNERS TO BE INDEXED

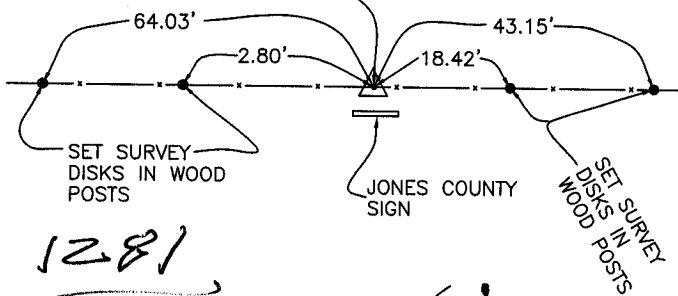
CORNER SECTION TOWNSHIP RANGE
SOUTHEAST 33 83N 4W
OFFICE FILE NO.



83433Y-072303.jpg

DATE OF FIELD WORK:
6-26-03
BK. 367

SET 5/8"X24" REBAR
WITH ORANGE CAP LS
14807 IN FENCE LINE
SE COR. SEC. 33-83-4

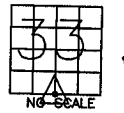


1281

PREVIOUSLY RECORDED IN BOOK N/A, PAGE N/A
MONUMENT DESCRIPTION AND HOW ESTABLISHED: SET 5/8"X24" REBAR WITH ORANGE CAP LS 14807 AT PROPORTIONATE DISTANCE FROM S1/4 COR. SEC. 33 TO SE COR. SEC. 34 IN EAST-WEST FENCE LINE. SET REFERENCE POINTS AND TIED OUT AS INDICATED. SOUTHEAST CORNER SECTION 33, TOWNSHIP 83 NORTH, RANGE 4 WEST, 5TH PM, JONES COUNTY, IOWA.

CORNERS TO BE INDEXED

CORNER SECTION TOWNSHIP RANGE
S-QUARTER 33 83N 4W
OFFICE FILE NO.



83433w-072303.jpg

OLD TREE STUMP

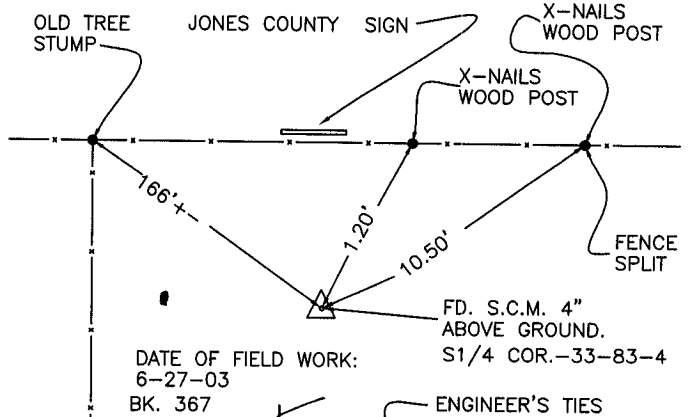
JONES COUNTY SIGN

X-NAILS WOOD POST

X-NAILS WOOD POST

FENCE SPLIT

ENGINEER'S TIES

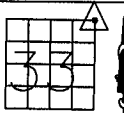


DATE OF FIELD WORK:
6-27-03
BK. 367

PREVIOUSLY RECORDED IN BOOK N/A, PAGE N/A
MONUMENT DESCRIPTION AND HOW ESTABLISHED FOUND STANDARD CONCRETE MONUMENT 4" ABOVE GROUND PER TIES PROJECT NO. C-806, JONES COUNTY ENGINEER. USED ORIGINAL TIES AS INDICATED. SOUTH QUARTER CORNER SECTION 33, TOWNSHIP 83 NORTH, RANGE 4 WEST OF 5TH PRINCIPAL MERIDIAN, JONES COUNTY, IOWA.

CORNERS TO BE INDEXED

CORNER SECTION TOWNSHIP RANGE
NORTHEAST 33 83N 4W
OFFICE FILE NO.



83433e-072303.jpg

SHED

SET 5/8"X24" REBAR
WITH ORANGE CAP LS
14807, NE-33-83-4

SET PLASTIC SURVEY DISK IN POWER POLE

DATE OF FIELD WORK:
7-02-03
BK. 367

NOTE:
ALL CORNERS
PROPORTIONED
FROM WERE FOUND
CORNERS.

220TH AVENUE

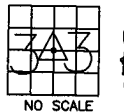
20TH ST.

SET PLASTIC SURVEY DISK IN WOOD POST

PREVIOUSLY RECORDED IN BOOK N/A, PAGE N/A
MONUMENT DESCRIPTION AND HOW ESTABLISHED SET 5/8"X24" REBAR WITH ORANGE CAP LS 14807 AT A PROPORTIONATE DISTANCE (N1/4-33 TO NE-34) (E1/4-33 TO E1/4-28) AT CENTERLINE ROAD TO EAST. SET REFERENCE POINTS AND TIED OUT AS INDICATED. NE-33-83-4, JONES COUNTY, IOWA.

CORNERS TO BE INDEXED

CORNER SECTION TOWNSHIP RANGE
CENTER 33 83N 4W
OFFICE FILE NO.



83433m-072303.JPG

TOP TELEPHONE BOX

DATE OF FIELD WORK:
7-02-03
BK. 367

FOUND 5/8" REBAR
8" BELOW SURFACE
CENTER SECTION 33,
T83N, R4W

15TH STREET

22ND AVENUE

5

SET PLASTIC SURVEY DISK IN POWER POLE

SET PLASTIC SURVEY DISK IN POWER POLE

SET PLASTIC SURVEY DISK IN WOOD POST

PREVIOUSLY RECORDED IN BOOK 1999, PAGE 3428
MONUMENT DESCRIPTION AND HOW ESTABLISHED FD. 5/8"X24" REBAR 8" BELOW SURFACE IN ROAD BED PER WALTON TIES, LS 11310. SET REFERENCE POINTS AND RETIED AS INDICATED. CENTER SECTION 33, T83N, R4W, 5TH PM, JONES COUNTY, IOWA.

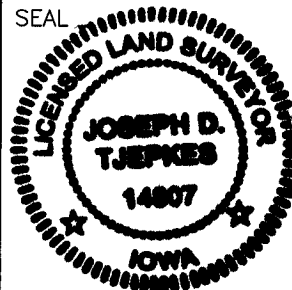
I hereby declare that this plat, survey or report was made by me or under my direct personal supervision and that I am a duly registered Land Surveyor under the laws of the State of Iowa.

Signed:

Joseph D. Tjepkes 8.25.03

Joseph D. Tjepkes L.S. Iowa Reg. No. 14807
My Registration Renewal Date is December 31, 2004

SEAL



J.D. TJEPKES LS 14807
JONES COUNTY
ENGINEER'S OFFICE

19501 HWY. 64,
ANAMOSA, IOWA,
52205 (319)462-3785

a