

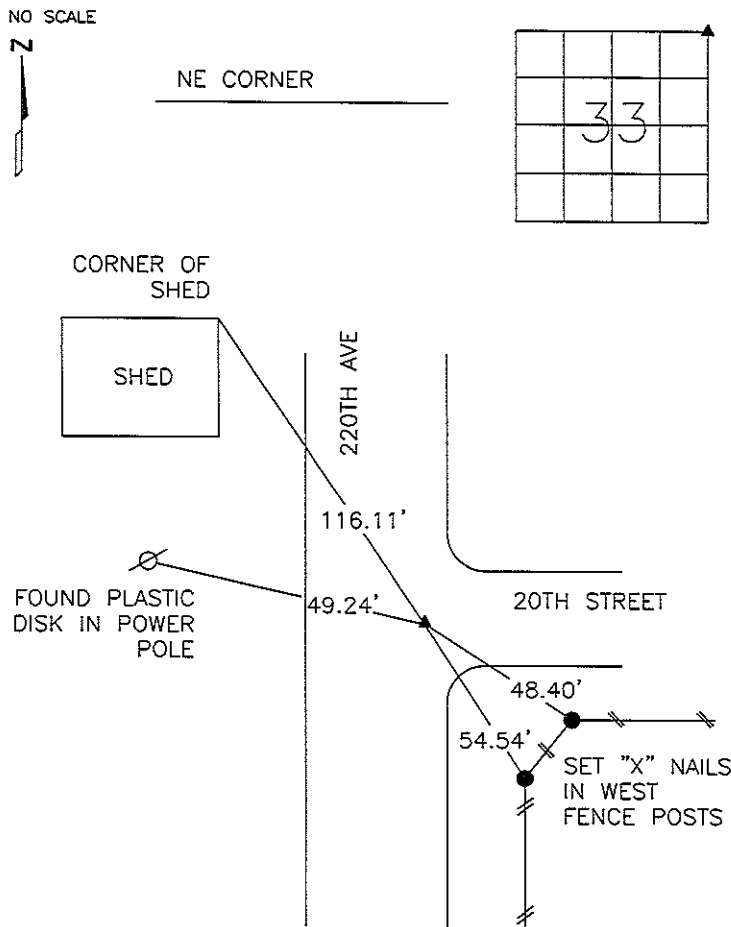
COF

Marie Krutzfield, Recorder
 Jones County, Iowa

PREPARED BY
 STEPHEN MICHAEL BRAIN, BRAIN ENGINEERING, INC., 1540 MIDLAND COURT NE, CEDAR RAPIDS, IOWA PH. (319) 294-9424

**UNITED STATES PUBLIC LAND
 SURVEY CORNER CERTIFICATE**

LAND SURVEY MONUMENTS SITUATED IN SECTION 33, TOWNSHIP 83 NORTH
 RANGE 4 WEST OF THE 5TH P.M., JONES COUNTY, IOWA.



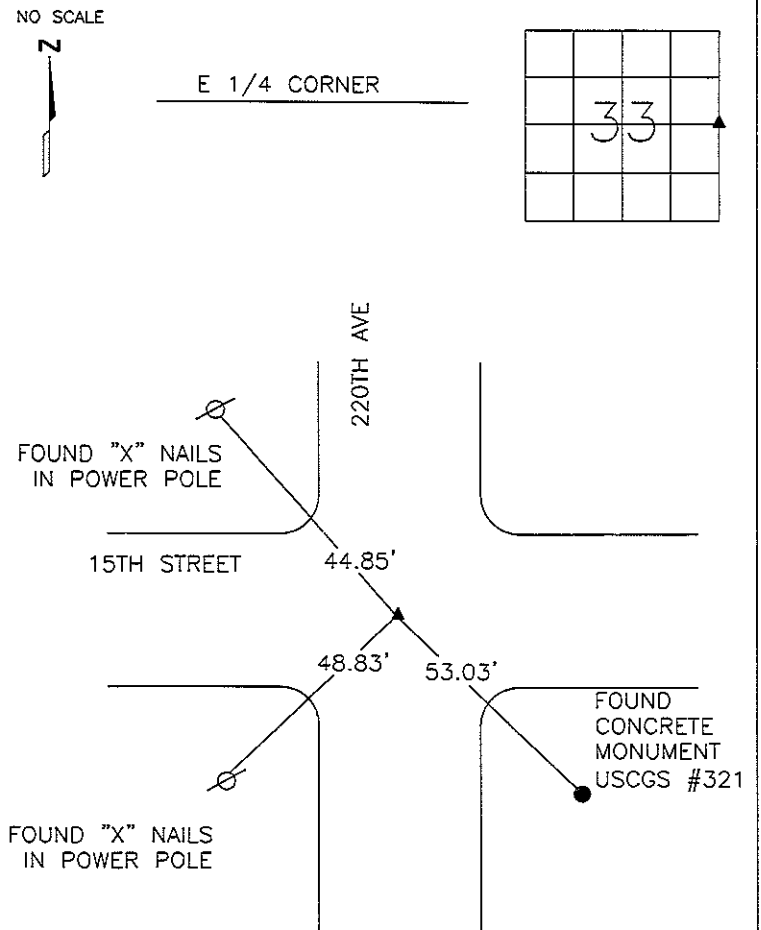
SEE NOTE "D" BELOW

OPC: ORANGE PLASTIC CAP

PREVIOUSLY RECORDED IN BOOK 2003 PAGE 3747

MONUMENT DESCRIPTION AND HOW ESTABLISHED _____

FOUND 5/8" REBAR W/ OPC #14807



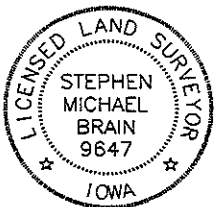
SEE NOTE "A" BELOW

RPC: RED PLASTIC CAP

PREVIOUSLY RECORDED IN BOOK _____ PAGE _____

MONUMENT DESCRIPTION AND HOW ESTABLISHED _____

FOUND 1/2" REBAR W/ RPC



I hereby certify that this land surveying document and the related survey work was performed by me or under my direct personal supervision and that I am a duly licensed Land Surveyor under the laws of the State of Iowa.

Signed _____ Date 1/29/06
 Stephen Michael Brain, L.S.
 My License Renewal Date is December 31, 2006
 License Number 9647
 Pages or sheets covered by this seal: 1/1

- A.THERE IS NO CERTIFICATE FOR THE CORNER ON FILE WITH THE RECORDER OF THE COUNTY IN WHICH THE CORNER IS LOCATED
- B.THE SURVEYOR IN RESPONSIBLE CHARGE OF THE LAND SURVEYING ACCEPTS A CORNER POSITION WHICH DIFFERS FROM THAT SHOWN IN THE PUBLIC RECORDS OF THE COUNTY IN WHICH THE CORNER IS LOCATED.
- C.THE CORNER MONUMENT IS REPLACED OR MODIFIED IN ANY WAY.
- D.THE REFERENCE TIES REFERRED TO IN AN EXISTING PUBLIC RECORD HAVE CHANGED.

CORNERS TO BE INDEXED			
CORNER	SECTION	TOWNSHIP	RANGE
NE CORNER	33	T83N	R4W
E 1/4 CORNER	33	T83N	R4W

BRAIN ENGINEERING, INC.
 1540 MIDLAND COURT NE
 CEDAR RAPIDS, IOWA 52402
 (319) 294-9424

2003 3747

FILED
RECORDERS OFFICE
JONES COUNTY IOWA

03 AUG -6 AM 9:13

MARIE KRUTZFIELD
RECORDER *No Fee*

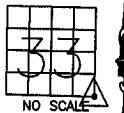
J.D. Tjepkes, LS. JONES COUNTY ENGINEER'S OFFICE, 19501 HWY. 64, ANAMOSA, IOWA, 52205 (319)462-3785

UNITED STATES PUBLIC LAND SURVEY CORNER CERTIFICATE

LAND SURVEY MONUMENTS SITUATED IN SECTION 33, TOWNSHIP 83
NORTH, RANGE 4 WEST OF THE 5TH P.M., JONES COUNTY, IOWA

CORNERS TO BE INDEXED

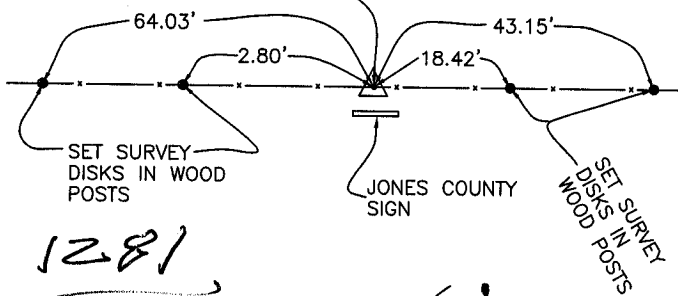
CORNER SECTION TOWNSHIP RANGE
SOUTHEAST 33 83N 4W
OFFICE FILE NO.



83433Y-072303.jpg

DATE OF FIELD WORK:
6-26-03
BK. 367

SET 5/8"X24" REBAR
WITH ORANGE CAP LS
14807 IN FENCE LINE
SE COR. SEC. 33-83-4

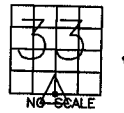


1281

PREVIOUSLY RECORDED IN BOOK N/A, PAGE N/A
MONUMENT DESCRIPTION AND HOW ESTABLISHED: SET 5/8"X24" REBAR WITH ORANGE CAP LS 14807 AT PROPORTIONATE DISTANCE FROM S1/4 COR. SEC. 33 TO SE COR. SEC. 34 IN EAST-WEST FENCE LINE. SET REFERENCE POINTS AND TIED OUT AS INDICATED. SOUTHEAST CORNER SECTION 33, TOWNSHIP 83 NORTH, RANGE 4 WEST, 5TH PM, JONES COUNTY, IOWA.

CORNERS TO BE INDEXED

CORNER SECTION TOWNSHIP RANGE
S-QUARTER 33 83N 4W
OFFICE FILE NO.



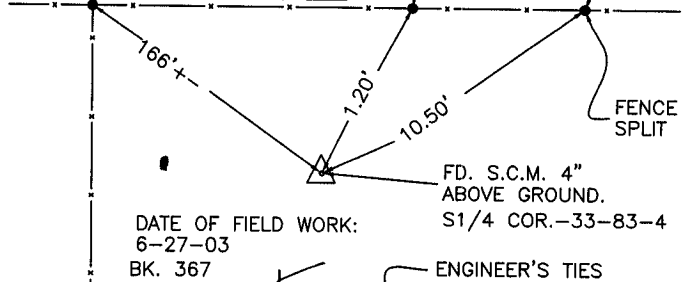
83433w-072303.jpg

OLD TREE STUMP

JONES COUNTY SIGN

X-NAILS WOOD POST

X-NAILS WOOD POST



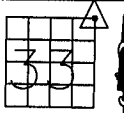
DATE OF FIELD WORK:
6-27-03
BK. 367

ENGINEER'S TIES

PREVIOUSLY RECORDED IN BOOK _____, PAGE _____
MONUMENT DESCRIPTION AND HOW ESTABLISHED FOUND STANDARD CONCRETE MONUMENT 4" ABOVE GROUND PER TIES PROJECT NO. C-806, JONES COUNTY ENGINEER. USED ORIGINAL TIES AS INDICATED. SOUTH QUARTER CORNER SECTION 33, TOWNSHIP 83 NORTH, RANGE 4 WEST OF 5TH PRINCIPAL MERIDIAN, JONES COUNTY, IOWA.

CORNERS TO BE INDEXED

CORNER SECTION TOWNSHIP RANGE
NORTHEAST 33 83N 4W
OFFICE FILE NO.



83433e-072303.jpg

SHED

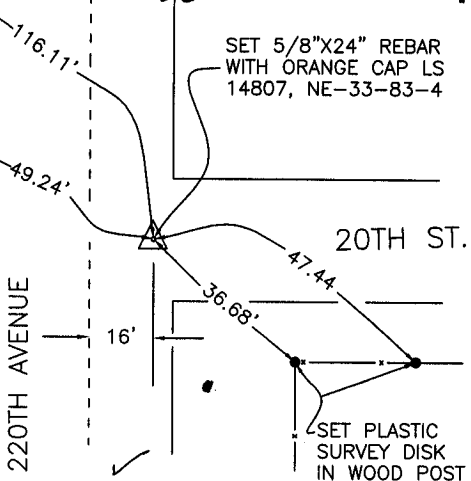
SET 5/8"X24" REBAR
WITH ORANGE CAP LS
14807, NE-33-83-4

SET PLASTIC SURVEY DISK IN POWER POLE

DATE OF FIELD WORK:
7-02-03
BK. 367

NOTE:
ALL CORNERS PROPORTIONED FROM WERE FOUND CORNERS.

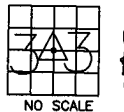
220TH AVENUE



PREVIOUSLY RECORDED IN BOOK N/A, PAGE N/A
MONUMENT DESCRIPTION AND HOW ESTABLISHED SET 5/8"X24" REBAR WITH ORANGE CAP LS 14807 AT A PROPORTIONATE DISTANCE (N1/4-33 TO NE-34) (E1/4-33 TO E1/4-28) AT CENTERLINE ROAD TO EAST. SET REFERENCE POINTS AND TIED OUT AS INDICATED. NE-33-83-4, JONES COUNTY, IOWA.

CORNERS TO BE INDEXED

CORNER SECTION TOWNSHIP RANGE
CENTER 33 83N 4W
OFFICE FILE NO.

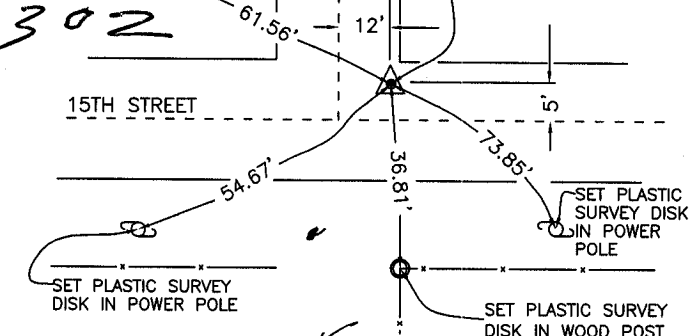


83433m-072303.JPG

TOP TELEPHONE BOX

DATE OF FIELD WORK:
7-02-03
BK. 367

FOUND 5/8" REBAR 8" BELOW SURFACE CENTER SECTION 33, T83N, R4W



PREVIOUSLY RECORDED IN BOOK 1999, PAGE 3428
MONUMENT DESCRIPTION AND HOW ESTABLISHED FD. 5/8"X24" REBAR 8" BELOW SURFACE IN ROAD BED PER WALTON TIES, LS 11310. SET REFERENCE POINTS AND RETIED AS INDICATED. CENTER SECTION 33, T83N, R4W, 5TH PM, JONES COUNTY, IOWA.

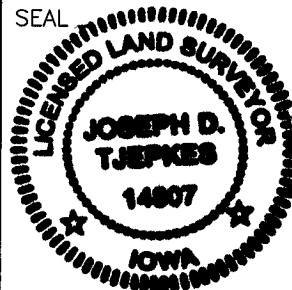
I hereby declare that this plat, survey or report was made by me or under my direct personal supervision and that I am a duly registered Land Surveyor under the laws of the State of Iowa.

Signed:

Joseph D. Tjepkes 8.25.03

Joseph D. Tjepkes L.S. Iowa Reg. No. 14807
My Registration Renewal Date is December 31, 2004

SEAL



J.D. Tjepkes LS 14807
JONES COUNTY
ENGINEER'S OFFICE

19501 HWY. 64,
ANAMOSA, IOWA,
52205 (319)462-3785

a