

2003 3739

FILED
RECORDERS OFFICE
JONES COUNTY IOWA

03 AUG -6 AM 8:57

MARIE KRUTZFIELD
RECORDER No Fee

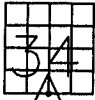
J.D. TJEPKES, LS. JONES COUNTY ENGINEER'S OFFICE, 19501 HWY. 64, ANAMOSA, IOWA, 52205 (319)462-3785

UNITED STATES PUBLIC LAND SURVEY CORNER CERTIFICATE

LAND SURVEY MONUMENTS SITUATED IN SECTION 34, TOWNSHIP 83
NORTH, RANGE 4 WEST OF THE 5TH P.M., JONES COUNTY, IOWA

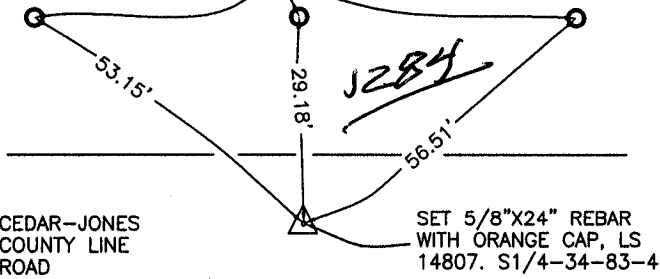
CORNERS TO BE INDEXED

CORNER SECTION TOWNSHIP RANGE
S-QUARTER 34 83N 4W



OFFICE FILE NO.
83434w-072303.jpg

SET 5/8"X24" REBAR
WITH JONES COUNTY
SIGN.



CEDAR-JONES
COUNTY LINE
ROAD

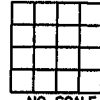
SET 5/8"X24" REBAR
WITH ORANGE CAP, LS
14807. S1/4-34-83-4

DATE OF FIELD WORK:
6-27-03

PREVIOUSLY RECORDED IN BOOK N/A, PAGE N/A
MONUMENT DESCRIPTION AND HOW ESTABLISHED: SET 5/8"X24"
REBAR WITH ORANGE CAP LS 14807 AT A PROPORTIONATE
DISTANCE FROM SE COR. 33 TO SE COR. 34 ON STRAIGHT LINE.
SET REFERENCE POINTS AND TIED OUT AS INDICATED. SOUTH
QUARTER CORNER SECTION 34, TOWNSHIP 83 NORTH, RANGE 4
WEST 5TH PM, JONES COUNTY, IOWA.

CORNERS TO BE INDEXED

CORNER SECTION TOWNSHIP RANGE



OFFICE FILE NO.

PREVIOUSLY RECORDED IN BOOK _____, PAGE _____
MONUMENT DESCRIPTION AND HOW ESTABLISHED _____

CORNERS TO BE INDEXED

CORNER SECTION TOWNSHIP RANGE
SOUTHEAST 34 83N 4W



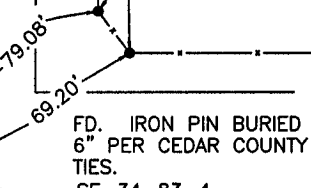
OFFICE FILE NO.
83434y-072303.jpg

DATE OF FIELD WORK:
6-27-03

1285

CHERRY GROVE ROAD

SET PLASTIC
SURVEY DISKS
WOOD POSTS



CEDAR-JONES
COUNTY LINE ROAD

FD. IRON PIN BURIED
6" PER CEDAR COUNTY
TIES.
SE-34-83-4

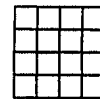
SET PLASTIC
SURVEY DISK IN
BRACE POST

SET PLASTIC
SURVEY DISK IN
WOOD POST

PREVIOUSLY RECORDED IN BOOK N/A, PAGE N/A
MONUMENT DESCRIPTION AND HOW ESTABLISHED: FOUND IRON
PIN 6" DOWN AT INTERSECTION OF CEDAR-JONES COUNTY LINE
ROAD AND CHERRY GROVE ROAD PER TIES FROM CEDAR COUNTY.
SET NEW REFERENCE POINTS AND TIED OUT AS INDICATED. SOUTH
EAST CORNER SECTION 34, TOWNSHIP 83 NORTH, RANGE 4 WEST
OF 5TH PM, JONES COUNTY, IOWA.

CORNERS TO BE INDEXED

CORNER SECTION TOWNSHIP RANGE



OFFICE FILE NO.

PREVIOUSLY RECORDED IN BOOK _____, PAGE _____
MONUMENT DESCRIPTION AND HOW ESTABLISHED _____

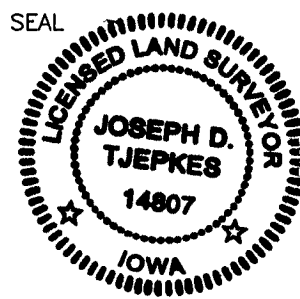
I hereby declare that this plat, survey or report
was made by me or under my direct personal
supervision and that I am a duly registered Land
Surveyor under the laws of the State of Iowa.

Signed

Joseph D. Tjepkes 8.25.03

Joseph D. Tjepkes L.S. Iowa Reg. No. 14807
My Registration Renewal Date is December 31, 2004

SEAL



J.D. TJEPKES LS 14807
JONES COUNTY
ENGINEER'S OFFICE

19501 HWY. 64,
ANAMOSA, IOWA,
52205 (319)462-3785

6