

04 AUG 10 AM 9:52

MARIE KRUTZFIELD
 RECORDER *No Fee*

J.D. TJEPKES, LS. JONES COUNTY ENGINEER'S OFFICE, 19501 HWY. 64, ANAMOSA, IOWA, 52205 (319)462-3785

UNITED STATES PUBLIC LAND SURVEY CORNER CERTIFICATE

LAND SURVEY MONUMENTS SITUATED IN SECTION 36, TOWNSHIP 83
 NORTH, RANGE 4 WEST OF THE 5TH P.M., JONES COUNTY, IOWA

CORNERS TO BE INDEXED

CORNER	SECTION	TOWNSHIP	RANGE
SE	36	83N	4W

OFFICE FILE NO. 83436t_072904.tif

FIELD NOTES:
 10-17-2000
 BK 335 P45
 TIES AFTER
 PAVING

PREVIOUSLY RECORDED IN BOOK NA, PAGE NA
 MONUMENT DESCRIPTION AND HOW ESTABLISHED _____
 NOTE: HALL & HALL MARKED LOCATION IN CONJUNCTION WITH
 JONES CO. PROJECT NO. CO-53(38)--55-53. SET 1/2"X24"
 REBAR W/CAP #11954. RETIED AS INDICATED. SE CORNER
 SECTION 36 T83N R4W.

CORNERS TO BE INDEXED

CORNER	SECTION	TOWNSHIP	RANGE
NE-SE-SE	36	83N	4W

OFFICE FILE NO. 83436t_073004.tif

FIELD NOTES:
 10-17-2000
 BK 335 P45
 TIES AFTER
 PAVING

PREVIOUSLY RECORDED IN BOOK NA, PAGE NA
 MONUMENT DESCRIPTION AND HOW ESTABLISHED _____
 NOTE: HALL & HALL MARKED LOCATION IN CONJUNCTION WITH
 JONES CO. PROJECT NO. CO-53(38)--55-53. SET 1/2"X24"
 REBAR W/CAP #11954. RETIED AS INDICATED. NE-SE-SE
 CORNER SECTION 36 T83N R4W.

CORNERS TO BE INDEXED

CORNER	SECTION	TOWNSHIP	RANGE
E1/4 COR.	36	83N	4W

OFFICE FILE NO. 83436q_080404.tif

FIELD NOTES:
 10-17-2000
 BK 335 P46
 TIES AFTER
 PAVING

PREVIOUSLY RECORDED IN BOOK NA, PAGE NA
 MONUMENT DESCRIPTION AND HOW ESTABLISHED _____
 NOTE: HALL & HALL MARKED LOCATION IN CONJUNCTION WITH
 JONES CO. PROJECT NO. CO-53(38)--55-53. SET 1/2"X24"
 REBAR W/CAP #11954. RETIED AS INDICATED. E1/4 CORNER
 SECTION 36 T83N R4W.

CORNERS TO BE INDEXED

CORNER	SECTION	TOWNSHIP	RANGE
NE-SE-NE	36	83N	4W

OFFICE FILE NO. 83436j_080404.tif

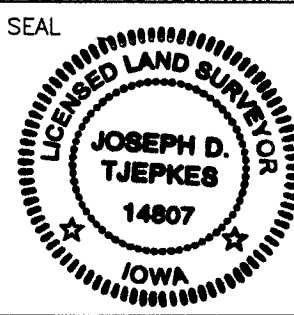
FIELD NOTES:
 10-17-2000
 BK 335 P46
 TIES AFTER
 PAVING

PREVIOUSLY RECORDED IN BOOK NA, PAGE NA
 MONUMENT DESCRIPTION AND HOW ESTABLISHED _____
 NOTE: HALL & HALL MARKED LOCATION IN CONJUNCTION WITH
 JONES CO. PROJECT NO. CO-53(38)--55-53. SET 1/2"X24"
 REBAR W/CAP #11954. RETIED AS INDICATED. NE-SE-NE
 CORNER SECTION 36 T83N R4W.

I hereby declare that this plat, survey or report was made by me or under my direct personal supervision and that I am a duly registered Land Surveyor under the laws of the State of Iowa.

Signed: *[Signature]* 8-09-04

Joseph D. Tjepkes L.S. Iowa Reg. No. 14807
 My Registration Renewal Date is December 31, 2004



J.D. TJEPKES LS 14807
 JONES COUNTY
 ENGINEER'S OFFICE

19501 HWY. 64,
 ANAMOSA, IOWA,
 52205 (319)462-3785

G

UNITED STATES PUBLIC LAND SURVEY CORNER CERTIFICATE

OF

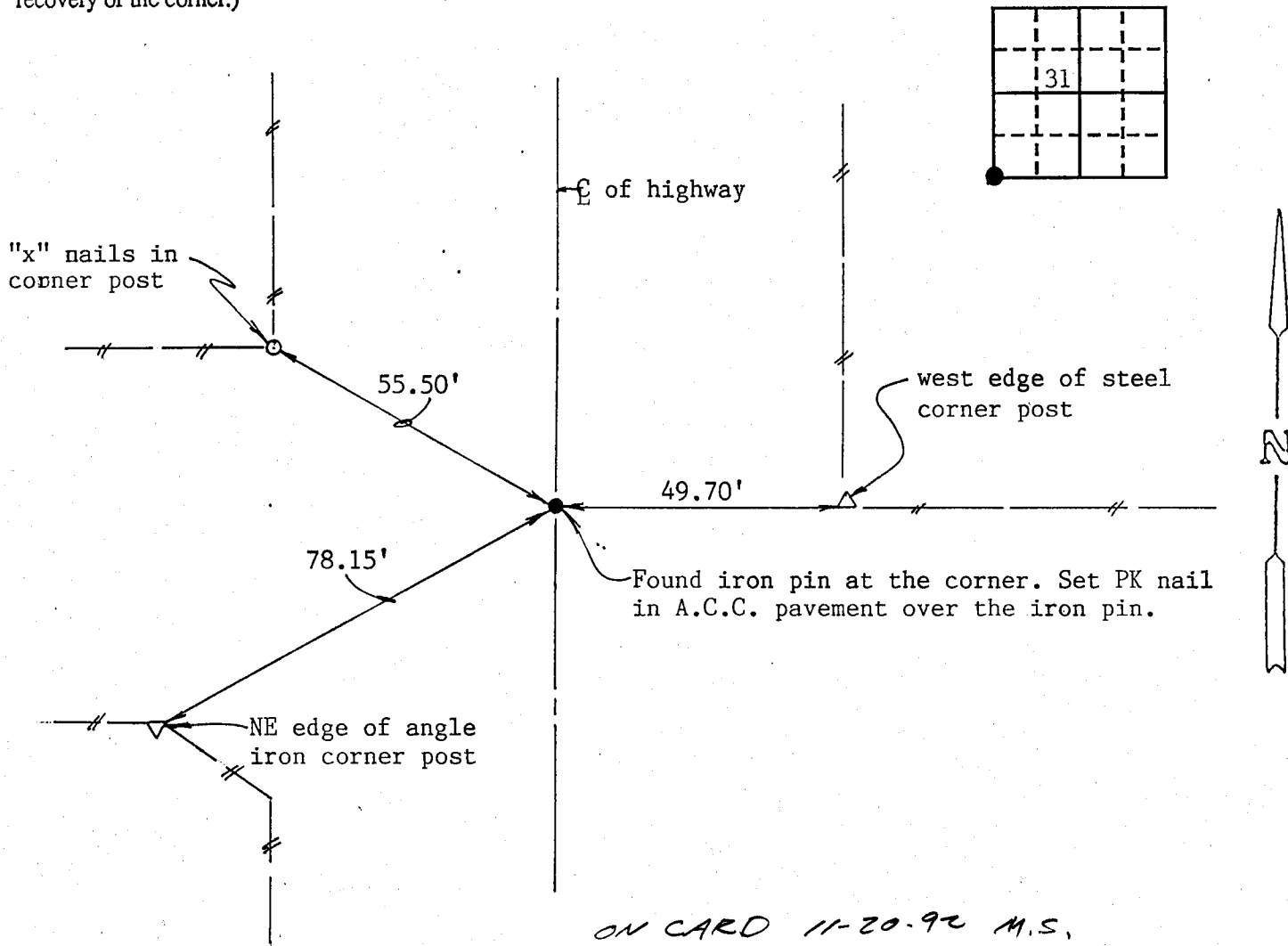
Land Survey Monuments situated in Section 31, Township 83 North, Range 3 West, of the Fifth Principal Meridian, Jones County, Iowa.
Previously recorded in no corner certificate on file in County Recorder's Office.

(Show reason for preparing this certificate, the evidence and detailed procedures used in establishing the corner positions and monumentation found or placed.)

Monument Description and Remarks: Found iron pin at corner. Set PK nail in A.C.C. pavement to cover the iron pin.

PLAN - VIEW

(Show a minimum of three reference ties to durable physical objects, relevant monuments and physical conditions that will enable recovery of the corner.)



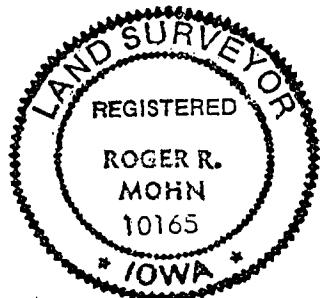
ON CARD 11-20-92 M.S.

I hereby certify that the survey work was completed and this certificate was prepared by me or under my direct personal supervision and that I am a duly registered land surveyor under the laws of the state of Iowa.

Signature: Roger R. Mohr
Name typed or printed: Roger R. Mohr

Date: April 30, 1992 Reg. No. 10165

Corners	List Corners to be Indexed		
	Section	Twp	Range
SW Cor.	31	83N	3W



SEAL