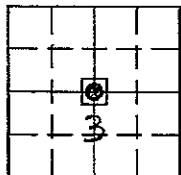


MARIE KRUTZFIELD, RECORDER
 JONES COUNTY, IOWA

Prepared by: Richard M. Kordick, P.E., L.S., 120 East Main, Suite D, Anamosa, IA 52205 Phone: (319) 462-4498

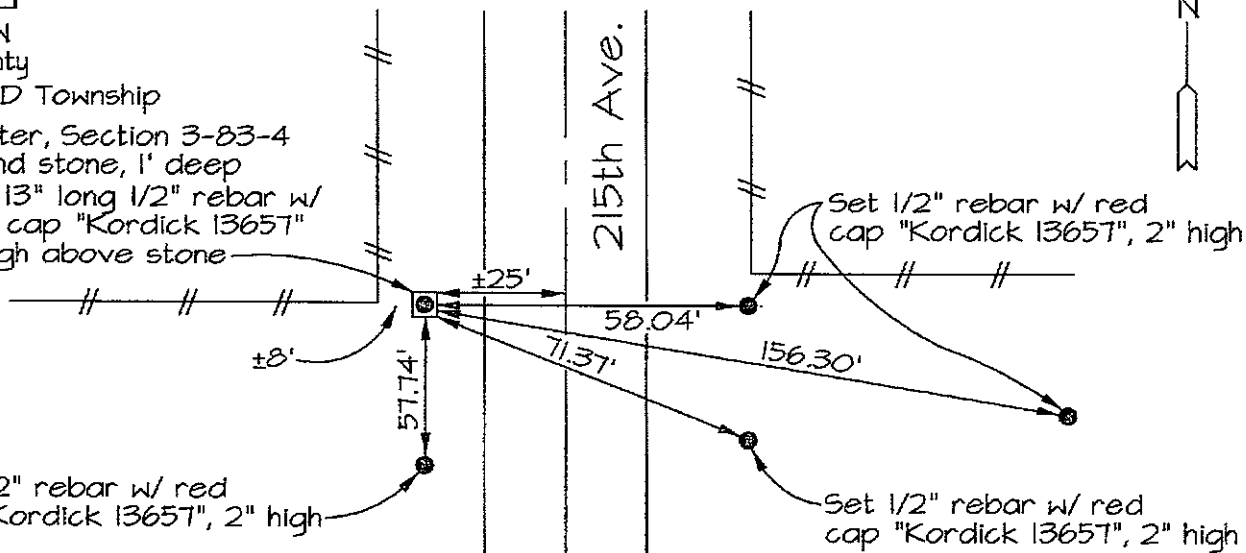
U.S. PUBLIC LAND SURVEY CORNER CERTIFICATE



3-83N-4W
 Jones County
 GREENFIELD Township

Center, Section 3-83-4
 Found stone, 1' deep
 Set 13" long 1/2" rebar w/
 red cap "Kordick 13657"
 1" high above stone

Set 1/2" rebar w/ red
 cap "Kordick 13657", 2" high



Plan-View No Scale

Section corner location: Center, Section 3-83-4

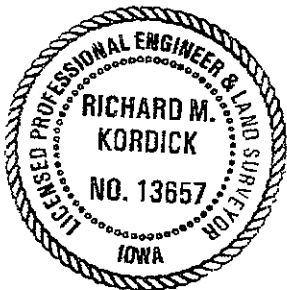
Reason for corner tie:

- A) There is no certificate for the corner on file with the recorder.
- B) Corner position differs from previously recorded certificate recorded in book , page
- C) Corner monument was replaced or modified.
- D) Reference ties in previously recorded certificate recorded in book , page are incorrect or missing.

Research at the recorder's office, auditor's office, and engineer's office revealed the following:
 County Road Plans called for a stone at this corner. An Easement signed June 9, 1937 from Jennie McConoughy (widow) to Jones County referenced a stone at this corner. An Easement signed July 14, 1937 from C.E. McConough (widower) to Jones County referenced a stone at this corner.

Field search performed was as follows:
 Field search was performed with a metal detector, probing and excavation.

Monument found or set:
 A 1/2" rebar with red cap "Kordick 13657" was set over a found stone.



I hereby certify that this land surveying document was prepared and the related survey work was performed by me or under my direct personal supervision and that I am a duly licensed Land Surveyor under the laws of the State of Iowa.

Richard M. Kordick 9/22/2006
 Richard M. Kordick date
 License number 13657
 My license renewal date is December 31, 2007.
 Pages or sheets covered by this seal: 1 of 1

LEGEND:

- Section Corner as noted
- Power Pole
- Section line
- Centerline
- Existing Fence
- Recorded Dist.

Kordick Surveying
 & Engineering
 120 East Main, Suite D
 Anamosa, Iowa 52205
 (319) 462-4498

U.S. Public Land
 Survey Corner Certificate
 Project: Plat of Survey
 Parcel No. 2006-138
 Proprietor: Niehaus Long View
 Farms Corporation

Field BK
 06083
 Date
 9-22-06
 Job No.
 06083
 Sheet
 1 of 1