

Marie Krutzfield, Recorder
 Jones County, Iowa

J.D. TJEPKES LS, 23428 RIDGE RD. ANAMOSA, IOWA, 52205 (319)462-6067

UNITED STATES PUBLIC LAND SURVEY CORNER CERTIFICATE

LAND SURVEY MONUMENTS SITUATED IN SECTION 2, TOWNSHIP 83
 NORTH, RANGE 4 WEST OF THE 5TH P.M., JONES COUNTY, IOWA

CORNERS TO BE INDEXED				CORNERS TO BE INDEXED			
CORNER	SECTION	TOWNSHIP	RANGE	CORNER	SECTION	TOWNSHIP	RANGE
N-QUARTER	2	83N	4W				

DATE OF FIELD WORK:
SEPTEMBER 2006

FIELD BOOK:
MISC. 2006

PREVIOUSLY RECORDED IN BOOK N/A, PAGE N/A
 MONUMENT DESCRIPTION AND HOW ESTABLISHED SET
 5/8"X24" REBAR W/YELLOW CAP LS 14807 PER TIE INDICATED IN
 BOOK 175, PAGE 364 (JONES COUNTY EASEMENT) AND JONES
 COUNTY ROAD CONST. PLANS C-555 (1970). TIES AS INDICATED.
 NORTH QUARTER COR. SEC. 2-83-4, JONES COUNTY, IOWA.

PREVIOUSLY RECORDED IN BOOK _____, PAGE _____
 MONUMENT DESCRIPTION AND HOW ESTABLISHED _____

CORNERS TO BE INDEXED			
CORNER	SECTION	TOWNSHIP	RANGE
NORTHWEST	2	83N	4W

DATE OF FIELD WORK:
SEPTEMBER 2006

FIELD BOOK:
MISC. 2006

PREVIOUSLY RECORDED IN BOOK N/A, PAGE N/A
 MONUMENT DESCRIPTION AND HOW ESTABLISHED SET
 5/8"X24" REBAR W/YELLOW CAP LS 14807 ON TOWN SHIP
 LINE 77 LINKS WEST OF FD. 5/8" REBAR AT SW. COR.
 35-84-4. SET REFERENCE TIES AS INDICATED. NORTHWEST
 CORNER SECTION 2, TOWNSHIP 83 NORTH, RANGE 4 WEST OF
 5TH PM, JONES COUNTY, IOWA.

LAND OWNER (RUSTY HINRICHSSEN) SAID
 THIS FENCE WAS MOVED ABOUT 40' EAST
 FROM PRIOR LOCATION. OLD PHOTOS
 INDICATE FENCE MAY HAVE BEEN MOVED
 IN PRIOR YEARS. HINRICHSSEN OWNS BOTH
 SIDES OF LAND LINE.

<p>I hereby declare that this plat, survey or report was made by me or under my direct personal supervision and that I am a duly registered Land Surveyor under the laws of the State of Iowa.</p> <p>Signed: <u>Joseph D. Tjepkes</u> 10-25-06</p> <p>Joseph D. Tjepkes L.S. Iowa Reg. No. 14807 My Registration Renewal Date is December 31, 2006</p>	<p>SEAL</p>	<p>J.D. TJEPKES LS 14807 23428 RIDGE ROAD ANAMOSA, IOWA 52205</p>
--	-------------	---

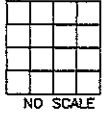
Marie Krutzfield, Recorder
 Jones County, Iowa

J.D. TJEPKES LS, 23428 RIDGE RD. ANAMOSA, IOWA, 52205 (319)462-6067

UNITED STATES PUBLIC LAND
 SURVEY CORNER CERTIFICATE

LAND SURVEY MONUMENTS SITUATED IN SECTION 35 TOWNSHIP 84
 NORTH, RANGE 4 WEST OF THE 5TH P.M., JONES COUNTY, IOWA

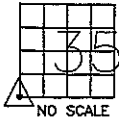
CORNERS TO BE INDEXED
 CORNER SECTION TOWNSHIP RANGE



PREVIOUSLY RECORDED IN BOOK _____, PAGE _____
 MONUMENT DESCRIPTION AND HOW ESTABLISHED _____

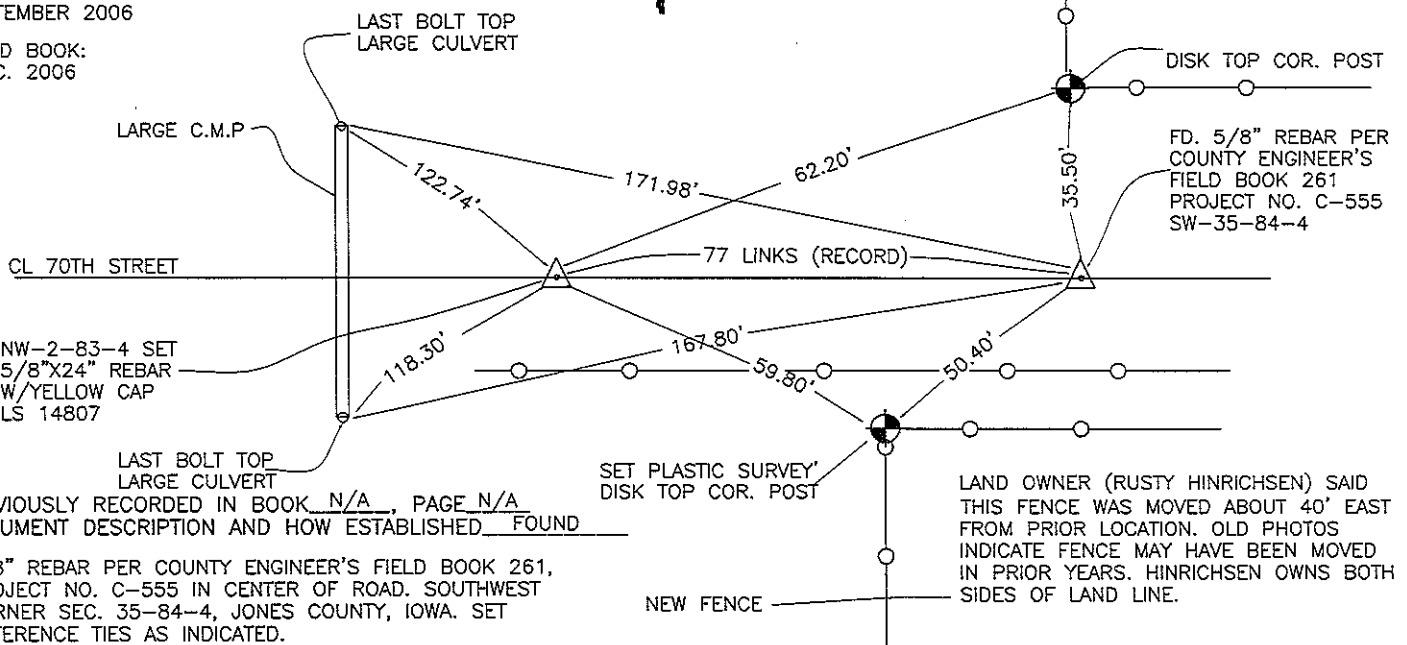
CORNERS TO BE INDEXED

CORNER SECTION TOWNSHIP RANGE
 SOUTHWEST 35 84N 4W



DATE OF FIELD WORK:
 SEPTEMBER 2006

FIELD BOOK:
 MISC. 2006



PREVIOUSLY RECORDED IN BOOK N/A, PAGE N/A
 MONUMENT DESCRIPTION AND HOW ESTABLISHED FOUND

5/8" REBAR PER COUNTY ENGINEER'S FIELD BOOK 261,
 PROJECT NO. C-555 IN CENTER OF ROAD. SOUTHWEST
 CORNER SEC. 35-84-4, JONES COUNTY, IOWA. SET
 REFERENCE TIES AS INDICATED.

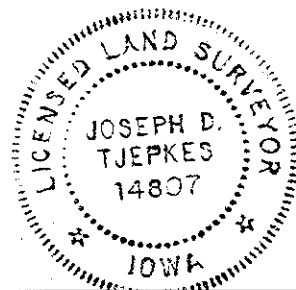
LAND OWNER (RUSTY HINRICHSEN) SAID
 THIS FENCE WAS MOVED ABOUT 40' EAST
 FROM PRIOR LOCATION. OLD PHOTOS
 INDICATE FENCE MAY HAVE BEEN MOVED
 IN PRIOR YEARS. HINRICHSEN OWNS BOTH
 SIDES OF LAND LINE.

I hereby declare that this plat, survey or report
 was made by me or under my direct personal
 supervision and that I am a duly registered Land
 Surveyor under the laws of the State of Iowa.

Signed: *[Signature]* 10-25-06

Joseph D. Tjepkes L.S. Iowa Reg. No. 14807
 My Registration Renewal Date is December 31, 2006

SEAL



J.D. TJEPKES LS 14807
 23428 RIDGE ROAD
 ANAMOSA, IOWA 52205

THIS IS NOT A CERTIFICATION

JONES COUNTY ENGINEER'S OFFICE, 19501 HWY. 64, ANAMOSA, IOWA, 52205 (319)462-3785

UNITED STATES PUBLIC LAND SURVEY CORNER CERTIFICATE

LAND SURVEY MONUMENTS SITUATED IN SECTION 34, TOWNSHIP 84
NORTH, RANGE 4 WEST OF THE 5TH P.M., JONES COUNTY, IOWA

CORNERS TO BE INDEXED

CORNER S-QUARTER	SECTION 34	TOWNSHIP 84N	RANGE 4W
---------------------	---------------	-----------------	-------------

OFFICE FILE NO. 84434w_061404.tif

PREVIOUSLY RECORDED IN BOOK 18, PAGE 126.
MONUMENT DESCRIPTION AND HOW ESTABLISHED FOUND
4"X6"X18" LIMESTONE 18" BELOW ROAD SURFACE AT CENTER OF ROAD INTERSECTION. LOWERED STONE, SET STANDARD CONCRETE MONUMENT ABOVE, TIES AS INDICATED. SOUTH QUARTER SECTION 34, TOWNSHIP 84 NORTH, RANGE 4 WEST OF THE 5TH PRINCIPAL MERIDIAN, JONES COUNTY, IOWA.

CORNERS TO BE INDEXED

CORNER SOUTHEAST	SECTION 34	TOWNSHIP 84N	RANGE 4W
---------------------	---------------	-----------------	-------------

OFFICE FILE NO. 84434y_061404.tif

PREVIOUSLY RECORDED IN BOOK _____, PAGE _____
MONUMENT DESCRIPTION AND HOW ESTABLISHED FOUND
12"X16" STONE 18" BELOW SURFACE. LOWERED, SET STANDARD CONCRETE MONUMENT ABOVE, TOP OF MONUMENT 12" BELOW ROAD. TIES AS INDICATED. SOUTHEAST CORNER SECTION 34, TOWNSHIP 84 NORTH, RANGE 4 WEST OF THE 5TH PRINCIPAL MERIDIAN, JONES COUNTY, IOWA.

CORNERS TO BE INDEXED

CORNER	SECTION	TOWNSHIP	RANGE
--------	---------	----------	-------

OFFICE FILE NO. _____

PREVIOUSLY RECORDED IN BOOK _____, PAGE _____
MONUMENT DESCRIPTION AND HOW ESTABLISHED _____

CORNERS TO BE INDEXED

CORNER	SECTION	TOWNSHIP	RANGE
--------	---------	----------	-------

OFFICE FILE NO. _____

PREVIOUSLY RECORDED IN BOOK _____, PAGE _____
MONUMENT DESCRIPTION AND HOW ESTABLISHED _____

~~I hereby declare that this plat, survey or report was made by me or under my direct personal supervision and that I am a duly registered Land Surveyor under the laws of the State of Iowa.~~

Signed: _____

SEAL

JONES COUNTY
ENGINEER'S OFFICE

19501 HWY. 64,
ANAMOSA, IOWA,
52205 (319)462-3785

C,

THIS IS NOT A CERTIFICATION

JONES COUNTY ENGINEER'S OFFICE, 19501 HWY. 64, ANAMOSA, IOWA, 52205 (319)462-3785

UNITED STATES PUBLIC LAND SURVEY CORNER CERTIFICATE

LAND SURVEY MONUMENTS SITUATED IN SECTION 34, TOWNSHIP 84
NORTH, RANGE 4 WEST OF THE 5TH P.M., JONES COUNTY, IOWA

CORNERS TO BE INDEXED

CORNER S-QUARTER	SECTION 34	TOWNSHIP 84N	RANGE 4W
---------------------	---------------	-----------------	-------------

OFFICE FILE NO. 84434w_061404.tif

PREVIOUSLY RECORDED IN BOOK 18, PAGE 126.
MONUMENT DESCRIPTION AND HOW ESTABLISHED FOUND
4"X6"X18" LIMESTONE 18" BELOW ROAD SURFACE AT CENTER OF ROAD INTERSECTION. LOWERED STONE, SET STANDARD CONCRETE MONUMENT ABOVE, TIES AS INDICATED. SOUTH QUARTER SECTION 34, TOWNSHIP 84 NORTH, RANGE 4 WEST OF THE 5TH PRINCIPAL MERIDIAN, JONES COUNTY, IOWA.

CORNERS TO BE INDEXED

CORNER SOUTHEAST	SECTION 34	TOWNSHIP 84N	RANGE 4W
---------------------	---------------	-----------------	-------------

OFFICE FILE NO. 84434y_061404.tif

PREVIOUSLY RECORDED IN BOOK _____, PAGE _____
MONUMENT DESCRIPTION AND HOW ESTABLISHED FOUND
12"X16" STONE 18" BELOW SURFACE. LOWERED, SET STANDARD CONCRETE MONUMENT ABOVE, TOP OF MONUMENT 12" BELOW ROAD. TIES AS INDICATED. SOUTHEAST CORNER SECTION 34, TOWNSHIP 84 NORTH, RANGE 4 WEST OF THE 5TH PRINCIPAL MERIDIAN, JONES COUNTY, IOWA.

CORNERS TO BE INDEXED

CORNER	SECTION	TOWNSHIP	RANGE
--------	---------	----------	-------

OFFICE FILE NO. _____

PREVIOUSLY RECORDED IN BOOK _____, PAGE _____
MONUMENT DESCRIPTION AND HOW ESTABLISHED _____

CORNERS TO BE INDEXED

CORNER	SECTION	TOWNSHIP	RANGE
--------	---------	----------	-------

OFFICE FILE NO. _____

PREVIOUSLY RECORDED IN BOOK _____, PAGE _____
MONUMENT DESCRIPTION AND HOW ESTABLISHED _____

~~I hereby declare that this plat, survey or report was made by me or under my direct personal supervision and that I am a duly registered Land Surveyor under the laws of the State of Iowa.~~

Signed: _____

SEAL

JONES COUNTY
ENGINEER'S OFFICE

19501 HWY. 64,
ANAMOSA, IOWA,
52205 (319)462-3785

C,