

2002 1496
 FILED
 RECORDERS OFFICE
 JONES COUNTY IOWA

02 APR 15 AM 11:45

MARIE KRUTZFIELD
 RECORDER 6.00 Pd

DENNIS R. KUNZE 1645 HILLCREST CT., MARION IA. 52302 319-373-1384
 UNITED STATES PUBLIC LAND SURVEY CORNER CERTIFICATE
 OF

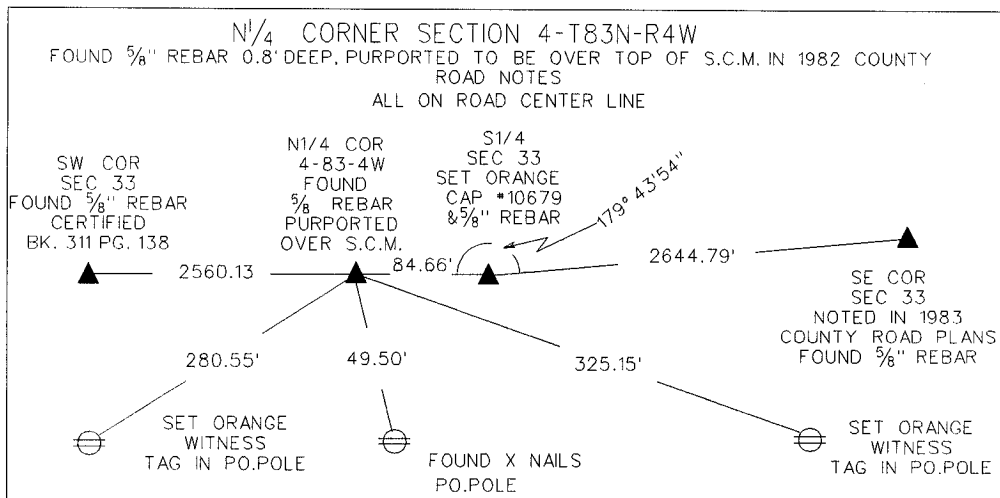
LAND SURVEY MONUMENTS SITUATED IN SECTION 4, TOWNSHIP 83 NORTH, RANGE
4 WEST, OF THE 5TH PRINCIPAL MERIDIAN JONES COUNTY IOWA.
 PREVIOUSLY RECORDED IN N.A. IN COUNTY RECORDER'S OFFICE.

(book, page, document number, etc.)

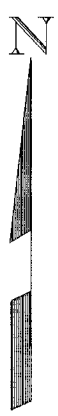
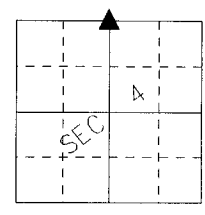
(Show reason for preparing this certificate, the evidence and detailed procedures used in establishing the corner positions and monumentation found or placed.)

MONUMENT DESCRIPTION AND REMARKS: THIS CORNER WAS USED TO TIE THE PLAT OF SURVEY

*2002-45 IN THE SE1/4 SW1/4 SEC 33-T84N-R4W
 I SHOT 4 MILES EAST AND WEST AND COMPARED POSSESSION LINES WITH STONES FOUND BY 1936 COUNTY CREW. IT APPEARS THAT A MAJOR ERROR MAY HAVE BEEN CREATED BEFORE 1936 BY BASING CORNERS ALONG THIS LINE FROM THE CENTER OF A ROAD TO THE SOUTH ON THE WEST SIDE OF THE NE1/4 NE1/4 OF SECTION 5. THE ROAD TO THE NORTH ON THE WEST LINE SE1/4 SE1/4 OF SEC. 32 WORKS AND AGREES WITH POSSESSION IN SEC 32 & 33, THE SENIOR CORNERS. AT THIS LATE DATE IT MAY BE NECESSARY IN THE FUTURE TO IGNORE THE ORIGINAL CLOSING DISTANCES AND ESTABLISH THEM AS USED AND OCCUPIED.



834042



- x - = FENCE
- S.C.M. = STANDARD CONCRETE MONUMENT
- ⊕ = POWER POLE
- ▲ = SECTION CORNER
- ☁ = TREE

LICENSED LAND SURVEYOR
 DENNIS R. KUNZE
 10679
 IOWA

I hereby certify that this land surveying document was prepared by me or under my direct personal supervision and that I am a duly licensed Land Surveyor under the laws of the State of Iowa.

Dennis R. Kunze 4-9-2002
 DENNIS R. KUNZE
 License number 10679
 My license renewal date is December 31, 2002
 Pages or sheets covered by this seal:
This page

LAND CORNERS TO BE RECORDED

Corners	Section	Twp.	Range
N1/4 COR	4	T83N	R4W

2002 1495

FILED
RECORDERS OFFICE
JONES COUNTY IOWA

02 APR 15 AM 11:44

MARIE KRUTZFIELD
RECORDER 6.00Pd

DENNIS R. KUNZE 1645 HILLCREST CT., MARION IA, 52302 319-373-1384
UNITED STATES PUBLIC LAND SURVEY CORNER CERTIFICATE
OF

LAND SURVEY MONUMENTS SITUATED IN SECTION 33, TOWNSHIP 84 NORTH, RANGE
4 WEST, OF THE 5TH PRINCIPAL MERIDIAN JONES COUNTY IOWA.
PREVIOUSLY RECORDED IN N.A. IN COUNTY RECORDER'S OFFICE.

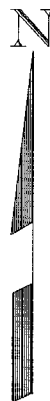
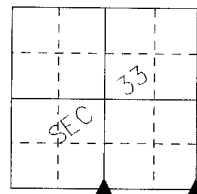
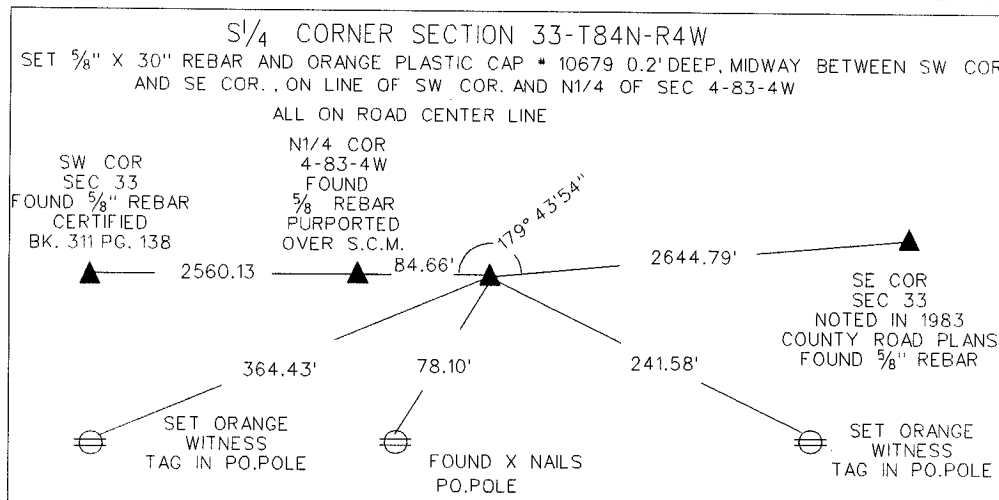
(book, page, document number, etc.)

(Show reason for preparing this certificate, the evidence and detailed procedures used in establishing the corner positions and monumentation found or placed.)

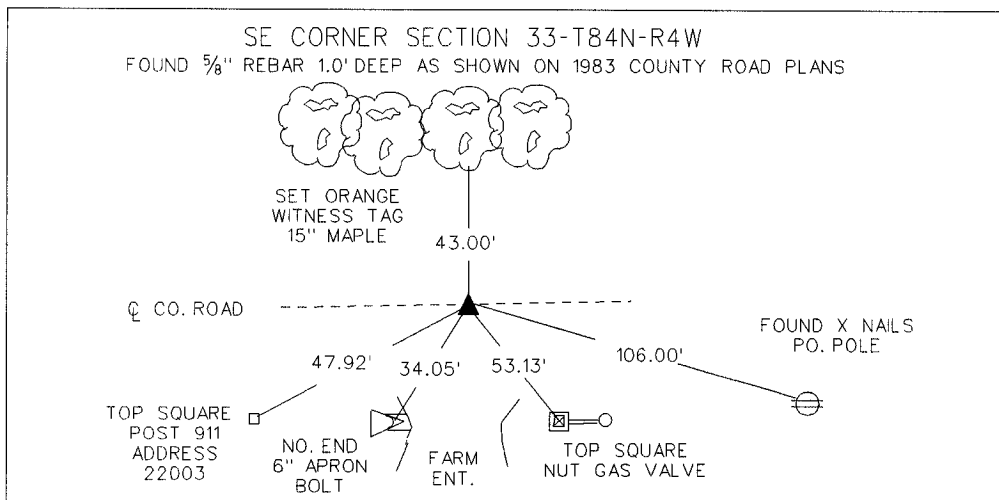
MONUMENT DESCRIPTION AND REMARKS: THESE CORNERS WERE SET TO TIE THE PLAT OF SURVEY
*2002-45 IN THE SE1/4 SW1/4

I SHOT 4 MILES EAST AND WEST AND COMPARED POSSESSION LINES WITH STONES FOUND BY 1936 COUNTY CREW. IT APPEARS THAT A MAJOR ERROR MAY HAVE BEEN CREATED BEFORE 1936 BY BASING CORNERS ALONG THIS LINE FROM THE CENTER OF A ROAD TO THE SOUTH ON THE WEST SIDE OF THE NE1/4 NE1/4 OF SECTION 5. THE ROAD TO THE NORTH ON THE WEST LINE SE1/4 OF SEC. 32 WORKS AND AGREES WITH POSSESSION IN SEC 32 & 33, THE SENIOR CORNERS. AT THIS LATE DATE IT MAY BE NECESSARY IN THE FUTURE TO IGNORE THE ORIGINAL CLOSING DISTANCES AND ESTABLISH THEM AS USED AND OCCUPIED.

84433w



84433y



- x- = FENCE
- S.C.M. = STANDARD CONCRETE MONUMENT
- ⊕ = POWER POLE
- ▲ = SECTION CORNER
- ☁ = TREE

LICENSED LAND SURVEYOR

DENNIS R. KUNZE

10679

IOWA

I hereby certify that this land surveying document was prepared by me or under my direct personal supervision and that I am a duly licensed Land Surveyor under the laws of the State of Iowa.

Dennis R. Kunze 4-9-2002

DENNIS R. KUNZE

License number 10679

My license renewal date is December 31, 2002

Pages or sheets covered by this seal:
This page

LAND CORNERS TO BE RECORDED			
Corners	Section	Twp.	Range
S1/4 COR	33	T84N	R4W
SE COR	33	T84N	R4W