

PREPARED BY HALL & HALL ENGINEERS, INC. 209 29TH STREET N.E. CEDAR RAPIDS, IOWA 52402 (319) 362-9548

SECTION CORNER CERTIFICATE

OF
LAND SURVEY MONUMENTS SITUATED IN SECTION 5, TOWNSHIP 83 NORTH,
RANGE 4 WEST, OF THE FIFTH PRINCIPAL MERIDIAN, JONES COUNTY, IOWA.

PREVIOUSLY RECORDED IN BOOK AT PAGE

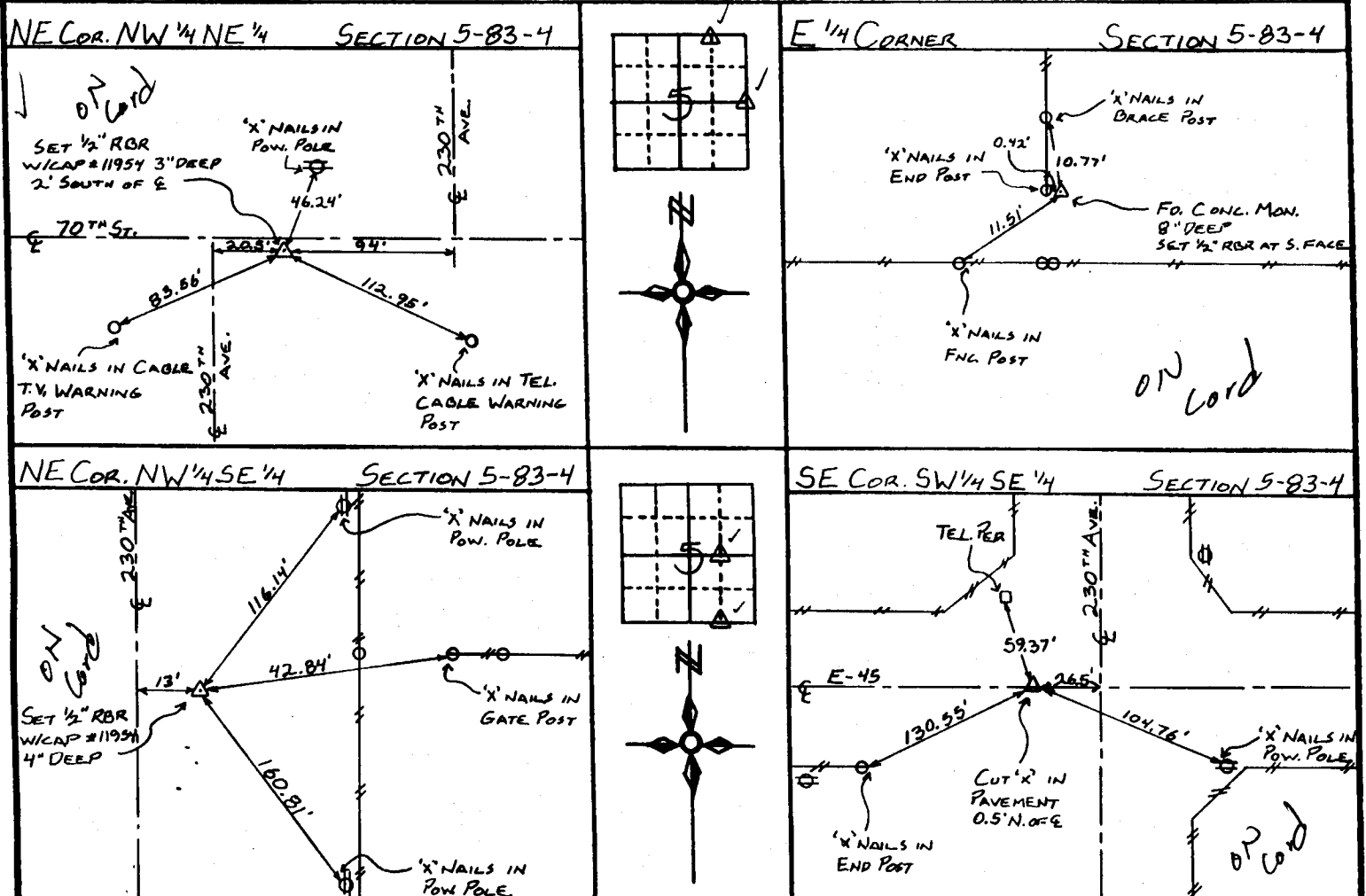
REASON FOR PREPARING CERTIFICATE:

- A) THERE IS NO CERTIFICATE FOR THE CORNER ON FILE WITH THE RECORDER OF THE COUNTY IN WHICH THE CORNER IS LOCATED.
- B) CORNER POSITION DIFFERS FROM THAT SHOWN IN THE PUBLIC RECORDS OF THE COUNTY IN WHICH THE CORNER IS LOCATED.
- C) THE CORNER MONUMENT HAS BEEN REPLACED OR MODIFIED
- D) THE REFERENCE TIES REFERRED TO IN AN EXISTING PUBLIC RECORD ARE INCORRECT

MONUMENT DESCRIPTION AND REMARKS:

NE COR. NW 1/4 NE 1/4 SEC. 5-83-4: SET 1/2" REBAR W/CAP #11954 3" DEEP, 2' SOUTH OF E 70TH ST.
E 1/4 COR. SEC. 5-83-4: FOUND CONC. MON. 8" DEEP, SET 1/2" REBAR AT SOUTH FACE, MON. 0.5' EAST OF N-S FENCE & 3' NORTH OF E-W FENCE.
NE COR. NW 1/4 SE 1/4 SEC. 5-83-4: SET 1/2" REBAR W/CAP #11954 4" DEEP, 13' EAST OF E 230TH AVE. & 7.5' SOUTH OF FENCE E.
SE COR. SW 1/4 SE 1/4 SEC. 5-83-4: SET CUT 'X' IN PAVEMENT, 0.5' NORTH OF E E-45

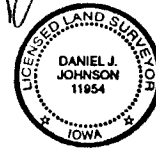
RECOVERY TIE DRAWING



I, DANIEL J. JOHNSON, - CERTIFY THAT THE CORNER LOCATION(S) SHOWN ON THIS RECORD WERE DETERMINED BY ME OR UNDER MY DIRECTION AND CONTROL AND THAT THIS U S PUBLIC LAND SURVEY MONUMENT RECORD IS CORRECT AND COMPLETE TO THE BEST OF MY KNOWLEDGE AND BELIEF

Daniel J. Johnson 10-27-97
DANIEL J. JOHNSON L.S. NO. 11954 DATE

Greenfield



83405d-102797
83405o-102797
83405n-102797
83408d-102797

MY LICENSE RENEWAL DATE IS DECEMBER 31, 1998

LEGEND Δ GOVERNMENT CORNER ● PROPERTY CORNER FOUND ○ 1/2" X 3/4" W/ L.S. CAP SET - - - EXISTING FENCE LINE ——— PROPERTY LINE	SHEET NO. U.S. PUBLIC LAND SURVEY RECORD PROJECT NO. ARMSTRONG - BOUNDARY	HALL AND HALL ENGINEERS, INC. 209 29TH STREET N.E. CEDAR RAPIDS, IOWA 52402 (319) 362-9548
	DRAWN BY JWP CHECKED BY JSR DATE 8/17/04 SCALE None	