

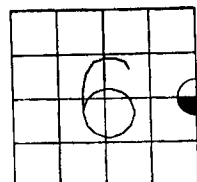
Greenfield

00 MAR 10 AM 8:40

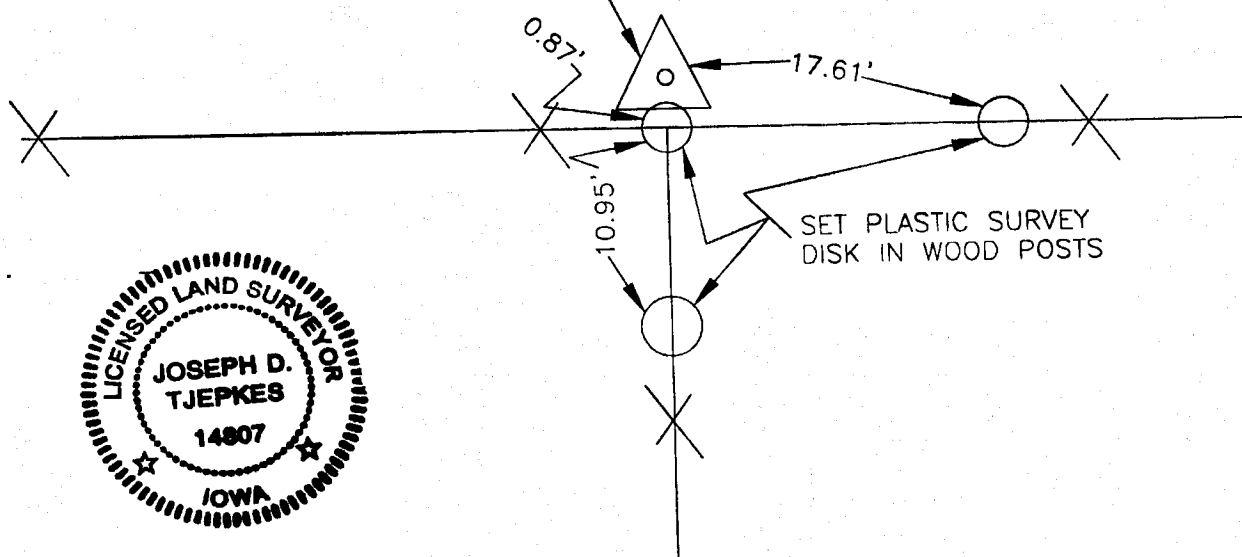
MARIE KRUTZFIELD *NO FEE*
RECORDER
JONES COUNTY ENGINEER, 19501 HWY. 64, ANAMOSA, IOWA

UNITED STATES PUBLIC LAND SURVEY CORNER CERTIFICATE

LAND SURVEY MONUMENTS SITUATED IN SECTION 6, TOWNSHIP 83
NORTH, RANGE 4 WEST OF THE 5TH P.M., JONES COUNTY, IOWA



FOUND STONE WITH 2-1/2" PIPE. SET 5/8"X24" REBAR WITH ORANGE CAP LS 14807 AT THE NORTH EDGE OF STONE. EAST 1/4 COR. SEC. 6, T83N, RANGE 4 WEST.



PREVIOUSLY RECORDED IN BOOK 302, PAGE 212
MONUMENT DESCRIPTION AND HOW ESTABLISHED FOUND
SMALL GRANITE STONE (2"X7"X6") 14" BELOW SURFACE WITH 2-1/2" PIPE ON SOUTH EDGE
STONE PER BRAIN ENGINEERING TIES RECORDED AT THE JONES COUNTY RECORDER'S IN BOOK
AND PAGE AS INDICATED ABOVE. SET 5/8"X24" REBAR WITH ORANGE CAP LS 14807 ON NORTH
SIDE OF STONE AND SET NEW REFERENCE TIES AS INDICATED ABOVE.

I hereby declare that this plat, survey or report was made by me or under my direct personal supervision and that I am a duly registered Land Surveyor under the laws of the State of Iowa.

Signed:

Joseph D. Tjepkes 3-10-2000

Joseph D. Tjepkes L.S. Iowa Reg. No. 14807
My Registration Renewal Date is December 31, 2000

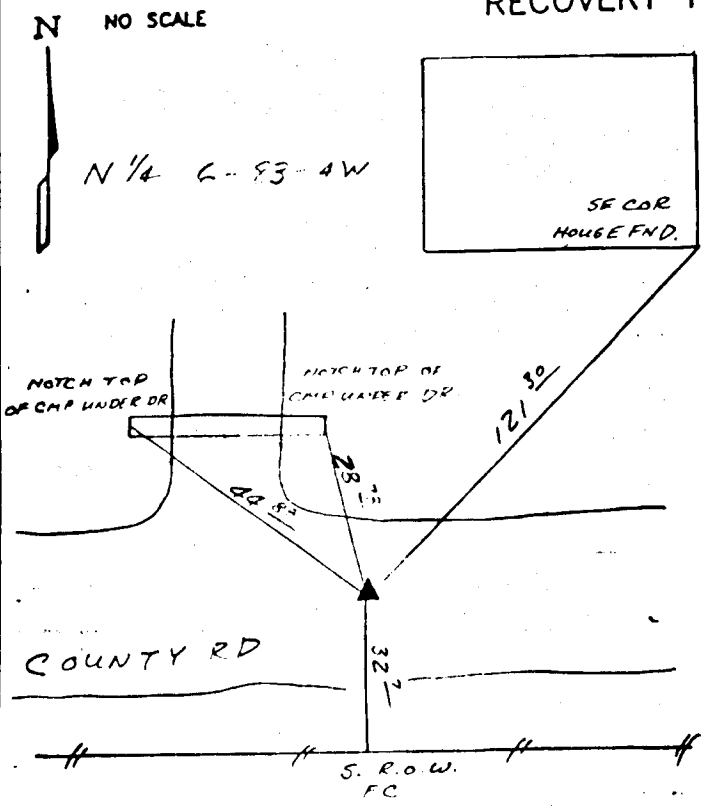
CORNERS TO BE INDEXED
CORNER SECTION TOWNSHIP RANGE
E-1/4 6 83N 4W

JONES COUNTY ENGINEER
19501 HWY. 64,
ANAMOSA, IOWA

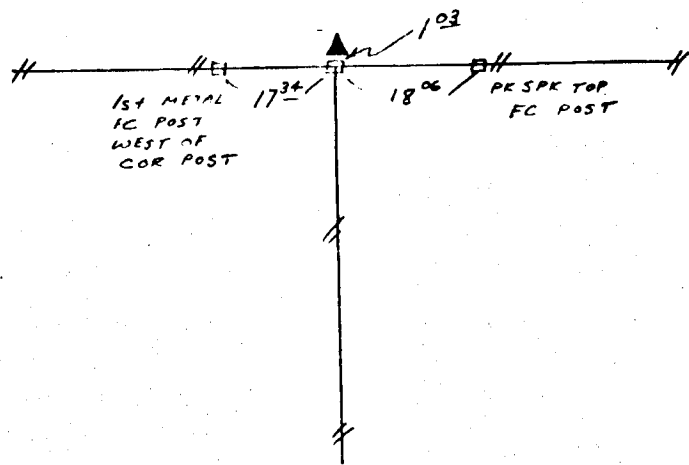
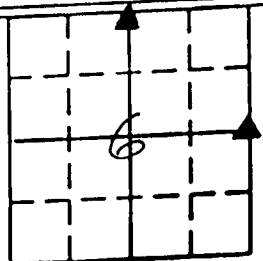
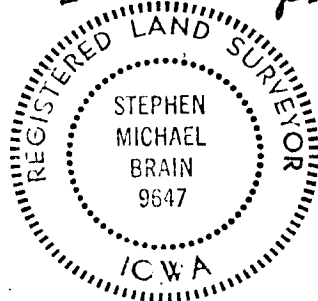
UNITED STATES PUBLIC LAND SURVEY CORNER CERTIFICATE

LAND SURVEY MONUMENTS SITUATED IN SECTION 6, TOWNSHIP 83,
RANGE 4W, OF THE 5th. PRINCIPAL MERIDIAN, JONES
COUNTY, IOWA.

RECOVERY TIE DRAWING



E 1/4 6-83-4W
B 302 P-212



ON CARD 5-31-91
M.S.

PREVIOUSLY RECORDED IN BOOK _____ PAGE _____
MONUMENT DESCRIPTION AND HOW ESTABLISHED:
FOUND 1/2" RECOR

PREVIOUSLY RECORDED IN BOOK _____ PAGE _____
MONUMENT DESCRIPTION AND HOW ESTABLISHED:
FD STONE REMAINS OF ORIG.
COR. POST BENEATH STONE

I HEREBY DECLARE THAT THE SURVEY WORK WAS COMPLETED AND THIS CERTIFICATE WAS PREPARED BY ME OR UNDER MY DIRECT PERSONAL SUPERVISION AND THAT I AM A DULY REGISTERED LAND SURVEYOR UNDER THE LAWS OF THE STATE OF IOWA.

Stephen Michael Brain 5/16/91
STEPHEN MICHAEL BRAIN, P.E. & L.S. 9647

List Corners to be Indexed			
Corners	Section	Twp	Range
W 1/4	5	83	4W
S 1/4	31	84	4W

834060-050691
83406c-050691
CAMENT ENGINEERING, INC.
HIAWATHA, IOWA