

2000 0828

FILED
RECORDERS OFFICE
JONES COUNTY IOWA

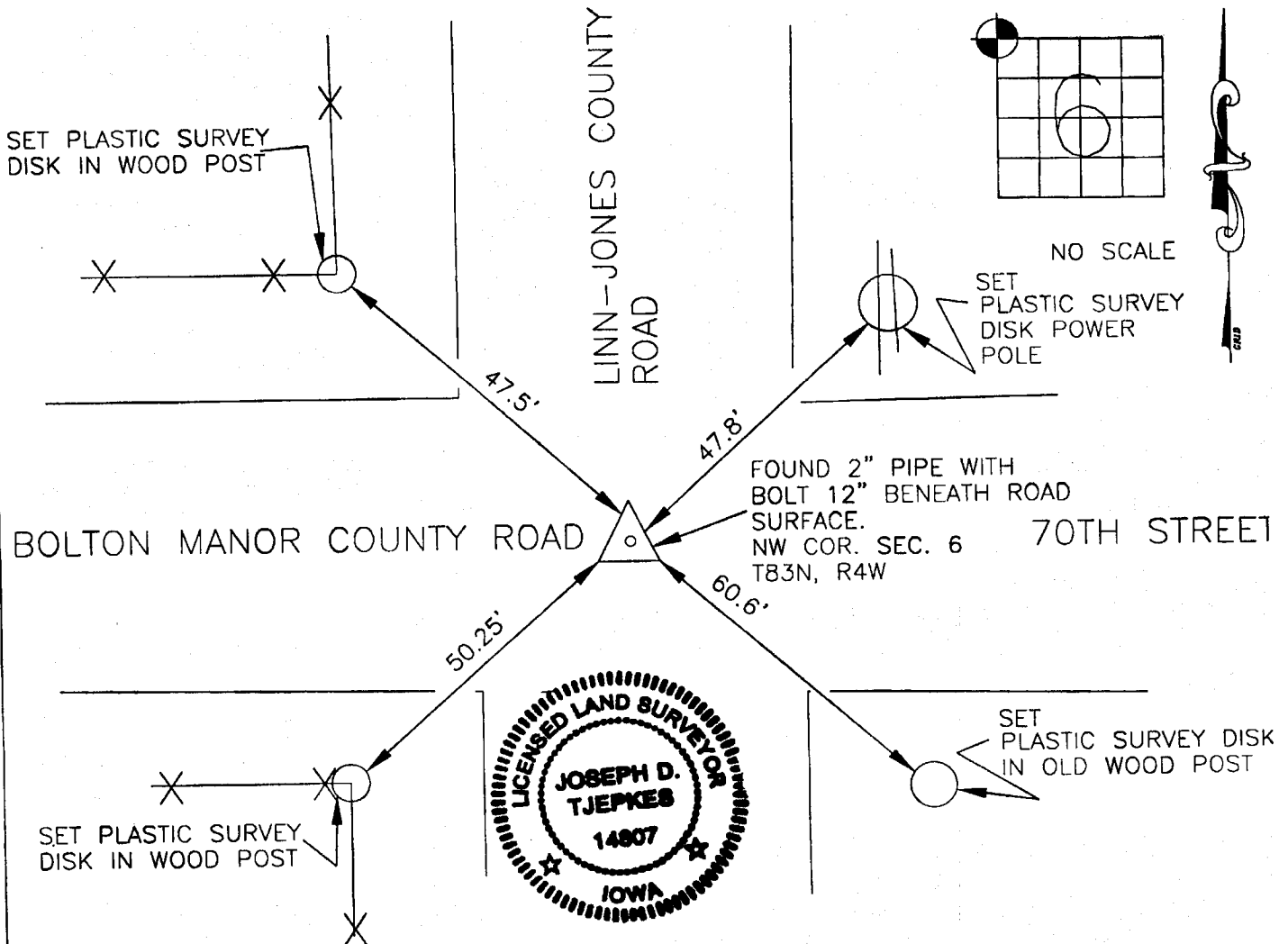
00 MAR 10 AM 8:36 No FEE

Greenfield

JONES COUNTY ENGINEER, ~~MARSHALL CRUTZWEIL~~ 64, ANAMOSA, IOWA
RECORDED

UNITED STATES PUBLIC LAND SURVEY CORNER CERTIFICATE

LAND SURVEY MONUMENTS SITUATED IN SECTION 6, TOWNSHIP 83
NORTH, RANGE 4 WEST OF THE 5TH P.M., JONES COUNTY, IOWA



PREVIOUSLY RECORDED IN BOOK N/A, PAGE N/A
 MONUMENT DESCRIPTION AND HOW ESTABLISHED FOUND
2" PIPE WITH BOLT 12" BELOW ROAD AT SPLIT OF FENCES. PREVIOUS TIES AS SHOWN IN THE
LINN COUNTY ENGINEER'S RECORDS HAVE BEEN DESTROYED. SET NEW REFERENCE TIES FOR
THE FOUND 2' PIPE AND BOLT AS INDICATED ABOVE.

I hereby declare that this plat, survey or report was made by me or under my direct personal supervision and that I am a duly registered Land Surveyor under the laws of the State of Iowa.

Signed: *Joseph D. Tjepkes* 3-10-2000

Joseph D. Tjepkes L.S. Iowa Reg. No. 14807
My Registration Renewal Date is December 31, 2000

CORNERS TO BE INDEXED			
CORNER	SECTION	TOWNSHIP	RANGE
N.W.	6	83N	4W
COR.			

JONES COUNTY ENGINEER
19501 HWY. 64,
ANAMOSA, IOWA