

Jones County Iowa
 Marie Krutzfield, Recorder
Fee Book 2010 1662
 06/23/2010 @1105AM
 ZSC SEC COR CBRT
 Book: Page: # Pages: 1
 Total Fees: \$9.00

PREPARED BY
 STEPHEN MICHAEL BRAIN, BRAIN ENGINEERING, INC., 1540 MIDLAND COURT NE, CEDAR RAPIDS, IOWA PH. (319) 294-9424

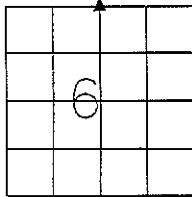
UNITED STATES PUBLIC LAND SURVEY CORNER CERTIFICATE

LAND SURVEY MONUMENTS SITUATED IN SECTION 6, TOWNSHIP 83 NORTH
 RANGE 4 WEST OF THE 5TH P.M., JONES COUNTY, IOWA.

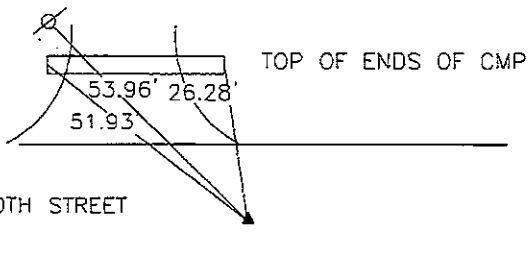
NO SCALE



N 1/4 CORNER



SET X NAILS
 ON POWER POLE



CMP - CORRUGATED METAL PIPE

PREVIOUSLY RECORDED IN FEEBOOK 2007 0999

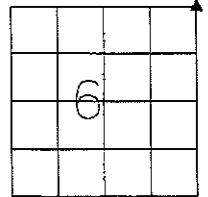
MONUMENT DESCRIPTION AND HOW ESTABLISHED:

FOUND 1/2" REBAR IN CENTERLINE OF STREET, 2" DEEP.
 PIN CHECKED WITH ADJACENT SURVEY. DRIVEWAY
 CULVERT HAD BEEN REPLACED SINCE PREVIOUSLY
 RECORDED TIES.

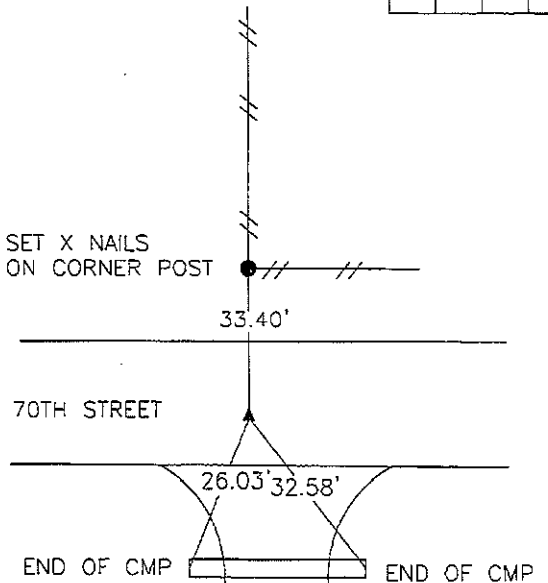
NO SCALE



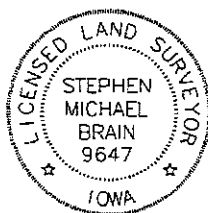
NE CORNER



SET X NAILS
 ON CORNER POST



FOUND 3/8" REBAR 8" DEEP IN CENTERLINE OF ROAD AND
 IN LINE WITH FENCE TO NORTH



I hereby certify that this land surveying document
 and the related survey work was performed by me
 or under my direct personal supervision and that
 I am a duly licensed Land Surveyor under the laws
 of the State of Iowa.

Signed *Stephen Michael Brain* Date *6/21/10*

Stephen Michael Brain, L.S.
 My License Renewal Date is December 31, 2010
 License Number 9647
 Pages or sheets covered by this seal: 1/1

- A. THERE IS NO CERTIFICATE FOR THE CORNER ON FILE WITH THE RECORDER OF THE COUNTY IN WHICH THE CORNER IS LOCATED
- B. THE SURVEYOR IN RESPONSIBLE CHARGE OF THE LAND SURVEYING ACCEPTS A CORNER POSITION WHICH DIFFERS FROM THAT SHOWN IN THE PUBLIC RECORDS OF THE COUNTY IN WHICH THE CORNER IS LOCATED.
- C. THE CORNER MONUMENT IS REPLACED OR MODIFIED IN ANY WAY.
- D. THE REFERENCE TIES REFERRED TO IN AN EXISTING PUBLIC RECORD ARE NOT CORRECT.

CORNERS TO BE INDEXED

CORNER	SECTION	TOWNSHIP	RANGE
NE CORNER	6	T83N	R4 W
N 1/4 CORNER	6	T83N	R4 W

BRAIN ENGINEERING, INC.

1540 MIDLAND COURT NE
 CEDAR RAPIDS, IOWA 52402
 (319) 294-9424

284910-50
 1505

Marie Krutzfield, Recorder
 Jones County, Iowa

PREPARED BY
 STEPHEN MICHAEL BRAIN, BRAIN ENGINEERING, INC., 1540 MIDLAND COURT NE, CEDAR RAPIDS, IOWA PH. (319) 294-9424

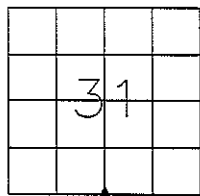
UNITED STATES PUBLIC LAND SURVEY CORNER CERTIFICATE

LAND SURVEY MONUMENTS SITUATED IN SECTION 31, TOWNSHIP 84 NORTH
 RANGE 4 WEST OF THE 5TH P.M., _____ JONES _____ COUNTY, IOWA.

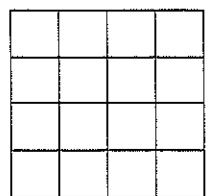
NO SCALE



S1/4 CORNER

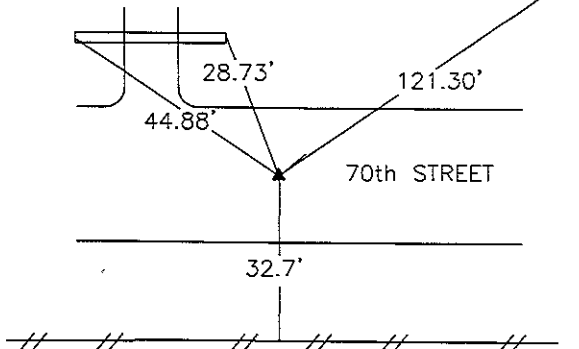


NO SCALE



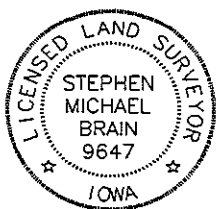
NOTCH IN TOP OF CMP

HOUSE FOUND



PREVIOUSLY RECORDED IN BOOK _____ PAGE _____
 MONUMENT DESCRIPTION AND HOW ESTABLISHED _____
 FOUND 1/2" REBAR

PREVIOUSLY RECORDED IN BOOK _____ PAGE _____
 MONUMENT DESCRIPTION AND HOW ESTABLISHED _____



I hereby certify that this land surveying document and the related survey work was performed by me or under my direct personal supervision and that I am a duly licensed Land Surveyor under the laws of the State of Iowa.
 Signed _____ Date 3/28/07

Stephen Michael Brain, L.S.
 My License Renewal Date is December 31, 2008
 License Number 9647
 Pages or sheets covered by this seal: 1/1

- A. THERE IS NO CERTIFICATE FOR THE CORNER ON FILE WITH THE RECORDER OF THE COUNTY IN WHICH THE CORNER IS LOCATED
- B. THE SURVEYOR IN RESPONSIBLE CHARGE OF THE LAND SURVEYING ACCEPTS A CORNER POSITION WHICH DIFFERS FROM THAT SHOWN IN THE PUBLIC RECORDS OF THE COUNTY IN WHICH THE CORNER IS LOCATED.
- C. THE CORNER MONUMENT IS REPLACED OR MODIFIED IN ANY WAY.
- D. THE REFERENCE TIES REFERRED TO IN AN EXISTING PUBLIC RECORD ARE NOT CORRECT.

CORNERS TO BE INDEXED

CORNER	SECTION	TOWNSHIP	RANGE
S 1/4 CORNER	31	T84N	R4 W

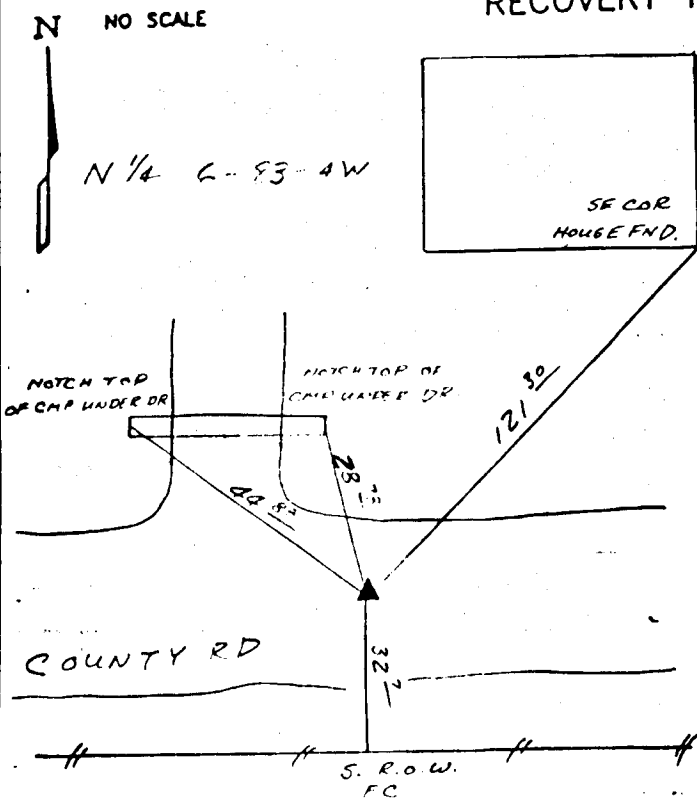
BRAIN ENGINEERING, INC.
 1540 MIDLAND COURT NE
 CEDAR RAPIDS, IOWA 52402
 (319) 294-9424

SMB

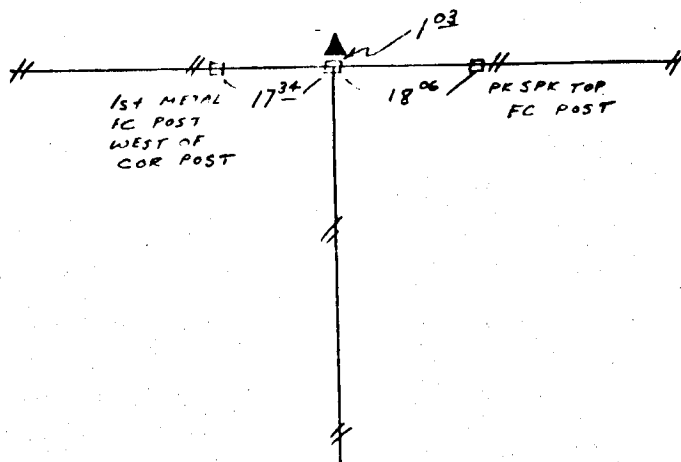
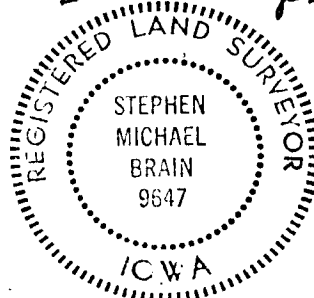
UNITED STATES PUBLIC LAND SURVEY CORNER CERTIFICATE

LAND SURVEY MONUMENTS SITUATED IN SECTION 6, TOWNSHIP 83,
RANGE 4W, OF THE 5th. PRINCIPAL MERIDIAN, JONES
COUNTY, IOWA.

RECOVERY TIE DRAWING



E 1/4 6-83-4W
B 302 P-212



PREVIOUSLY RECORDED IN BOOK _____ PAGE _____
MONUMENT DESCRIPTION AND HOW ESTABLISHED:
FOUND 1/2" RECOR

PREVIOUSLY RECORDED IN BOOK _____ PAGE _____
MONUMENT DESCRIPTION AND HOW ESTABLISHED:
FD STONE REMAINS OF ORIG.
COR. POST BENEATH STONE

I HEREBY DECLARE THAT THE SURVEY WORK WAS COMPLETED AND THIS CERTIFICATE WAS PREPARED BY ME OR UNDER MY DIRECT PERSONAL SUPERVISION AND THAT I AM A DULY REGISTERED LAND SURVEYOR UNDER THE LAWS OF THE STATE OF IOWA.

Stephen Michael Brain 5/16/91
STEPHEN MICHAEL BRAIN, P.E. & L.S. 9647

List Corners to be Indexed			
Corners	Section	Twp	Range
W 1/4	5	83	4W
S 1/4	31	84	4W

834060-050691
83406c-050691

SPAMMENT ENGINEERING, INC.
HIAWATHA, IOWA