

2005 3159

FILED  
RECORDERS OFFICE  
JONES COUNTY IOWA

05 SEP -6 PM 12:31

MARIE KRUTZFIELD  
RECORDER 7.00 Pd

SLSI 9-90

Prepared By: Leo D. Wooder, L.S. #14676 Anderson-Bogert Engineers & Surveyors, Inc.  
4001 River Ridge Dr. N.E. Cedar Rapids, Iowa 52402 Phone: (319) 377-4629

UNITED STATES PUBLIC LAND SURVEY CORNER CERTIFICATE  
OF

Land Survey Monuments situated in Section 7, Township 83N, Range 4W, of the Fifth Principal Meridian, Jones County, Iowa.  
Previously recorded in \_\_\_\_\_ Not Previously Recorded \_\_\_\_\_ in County Recorders Office.  
(book, page, document number, ect.)

(Show reason for preparing this certificate, the evidence and detailed procedures used in establishing the corner positions and monumentation found or placed.)

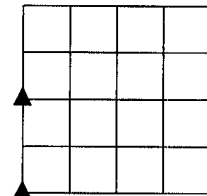
Monument Description and Remarks: W<sup>1</sup>/<sub>4</sub> Cor Sec 7 FD Conc Mon. W/ Top Broken off SW Cor Sec 7 FD <sup>1</sup>/<sub>2</sub>" IR Buried in Road, FD from Ties in Jones County Engineers Office. Corners were Found or Set for Survey Recorded as Instrument #20053039 in the Jones County Recorders Office.

PLAN - VIEW

(Show a minimum of three reference ties to durable physical objects, relevant monuments and physical conditions that will enable recovery of the corner.)

834076-091905-tie

1242 ✓✓

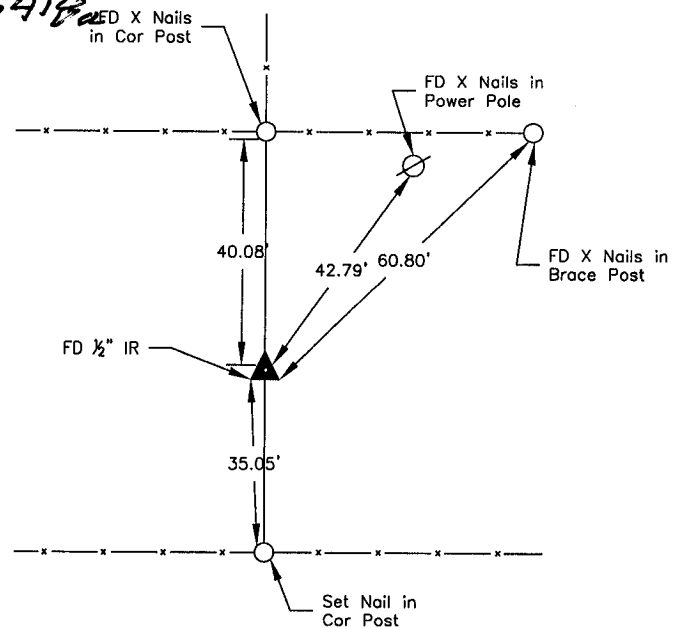
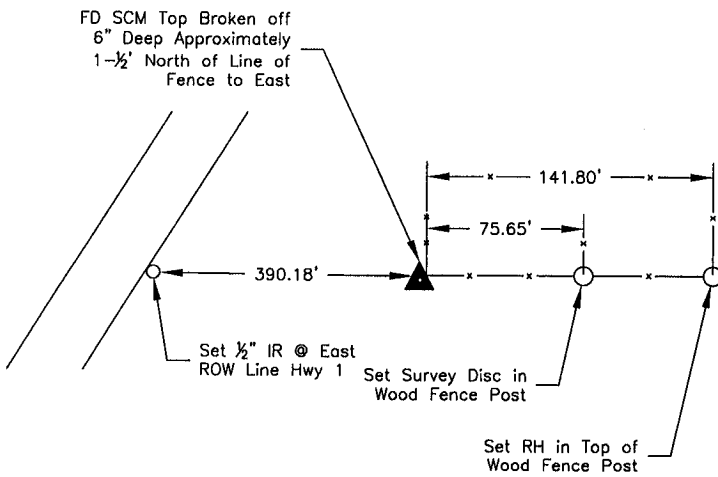


SECTION - 7

1253 ✓

N

834076-091905-tie  
834182



W1/4 Cor 7-83-4

SW Cor 7-83-4

I hereby certify that this land surveying document was prepared and the related survey work was performed by me or under my direct personal supervision and that I am a duly licensed Land Surveyor under the laws of the State of Iowa

Signature: Leo D. Wooder Date: 9/06/2005

List Corners to be Indexed

Corners	Section	Twp	Range
W <sup>1</sup> / <sub>4</sub> Cor	7	83	4

THIS IS NOT A CERTIFICATION

JONES COUNTY ENGINEER'S OFFICE, 19501 HWY. 64, ANAMOSA, IOWA, 52205 (319)462-3785

# UNITED STATES PUBLIC LAND SURVEY CORNER CERTIFICATE

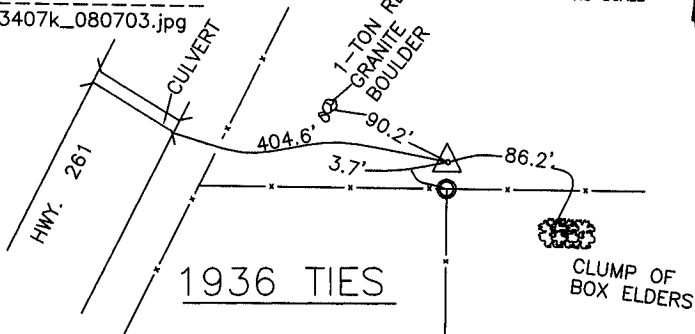
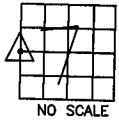
LAND SURVEY MONUMENTS SITUATED IN SECTION 7, TOWNSHIP 83 NORTH, RANGE 4 WEST OF THE 5TH P.M., JONES COUNTY, IOWA

### CORNERS TO BE INDEXED

CORNER SECTION TOWNSHIP RANGE  
WEST-QUARTER 7 83N 4W

OFFICE FILE NO.

83407k\_080703.jpg



KIRCHOFF:  
PARTY CHIEF COUNTY  
SURVEY CREW.(1936)

NOTE:

THE ABOVE IS REFERENCED TO JONES COUNTY CORNER STONE BOOK 6, PG. 34

THE TIES AS INDICATED ABOVE WERE TAKEN IN SEPT. 1936.

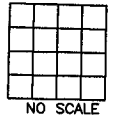
ENGINEER'S OFFICE

PREVIOUSLY RECORDED IN BOOK \_\_\_\_\_, PAGE \_\_\_\_\_  
MONUMENT DESCRIPTION AND HOW ESTABLISHED FOUND  
6"X6"X12" SMOOTH STONE 2' BELOW SURFACE ALONG WITH REMAINS OF OLD FENCE AND CORNER POST. LOWERED STONE TO 4' AND SET STANDARD CONCRETE MONUMENT DIRECTLY ABOVE. WEST 1/4 COR., SEC. 7-83-4, JONES COUNTY, IOWA.

### CORNERS TO BE INDEXED

CORNER SECTION TOWNSHIP RANGE

OFFICE FILE NO.

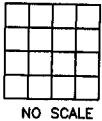


PREVIOUSLY RECORDED IN BOOK \_\_\_\_\_, PAGE \_\_\_\_\_  
MONUMENT DESCRIPTION AND HOW ESTABLISHED \_\_\_\_\_

### CORNERS TO BE INDEXED

CORNER SECTION TOWNSHIP RANGE

OFFICE FILE NO.

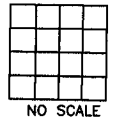


PREVIOUSLY RECORDED IN BOOK \_\_\_\_\_, PAGE \_\_\_\_\_  
MONUMENT DESCRIPTION AND HOW ESTABLISHED \_\_\_\_\_

### CORNERS TO BE INDEXED

CORNER SECTION TOWNSHIP RANGE

OFFICE FILE NO.



PREVIOUSLY RECORDED IN BOOK \_\_\_\_\_, PAGE \_\_\_\_\_  
MONUMENT DESCRIPTION AND HOW ESTABLISHED \_\_\_\_\_

~~I hereby declare that this plat, survey or report was made by me or under my direct personal supervision and that I am a duly registered Land Surveyor under the laws of the State of Iowa.~~

Signed:

SEAL

JONES COUNTY  
ENGINEER'S OFFICE

19501 HWY. 64,  
ANAMOSA, IOWA,  
52205 (319)462-3785