

2005 3160
FILED
RECORDERS OFFICE
JONES COUNTY IOWA

05 SEP -6 PM 12:32

MARIE KRUTZFIELD
RECORDER 7.00 pd SLSI 9-90

Prepared By: Leo D. Wooder, L.S. #14676 Anderson-Bogert Engineers & Surveyors, Inc.
4001 River Ridge Dr. N.E. Cedar Rapids, Iowa 52402 Phone: (319) 377-4629

UNITED STATES PUBLIC LAND SURVEY CORNER CERTIFICATE

OF

Land Survey Monuments situated in Section 7, Township 83N, Range 4W, of the Fifth Principal Meridian, Jones County, Iowa.
Previously recorded in Book 328, Page 127 in County Recorders Office.
(book, page, document number, ect.)

(Show reason for preparing this certificate, the evidence and detailed procedures used in establishing the corner positions and monumentation found or placed.)

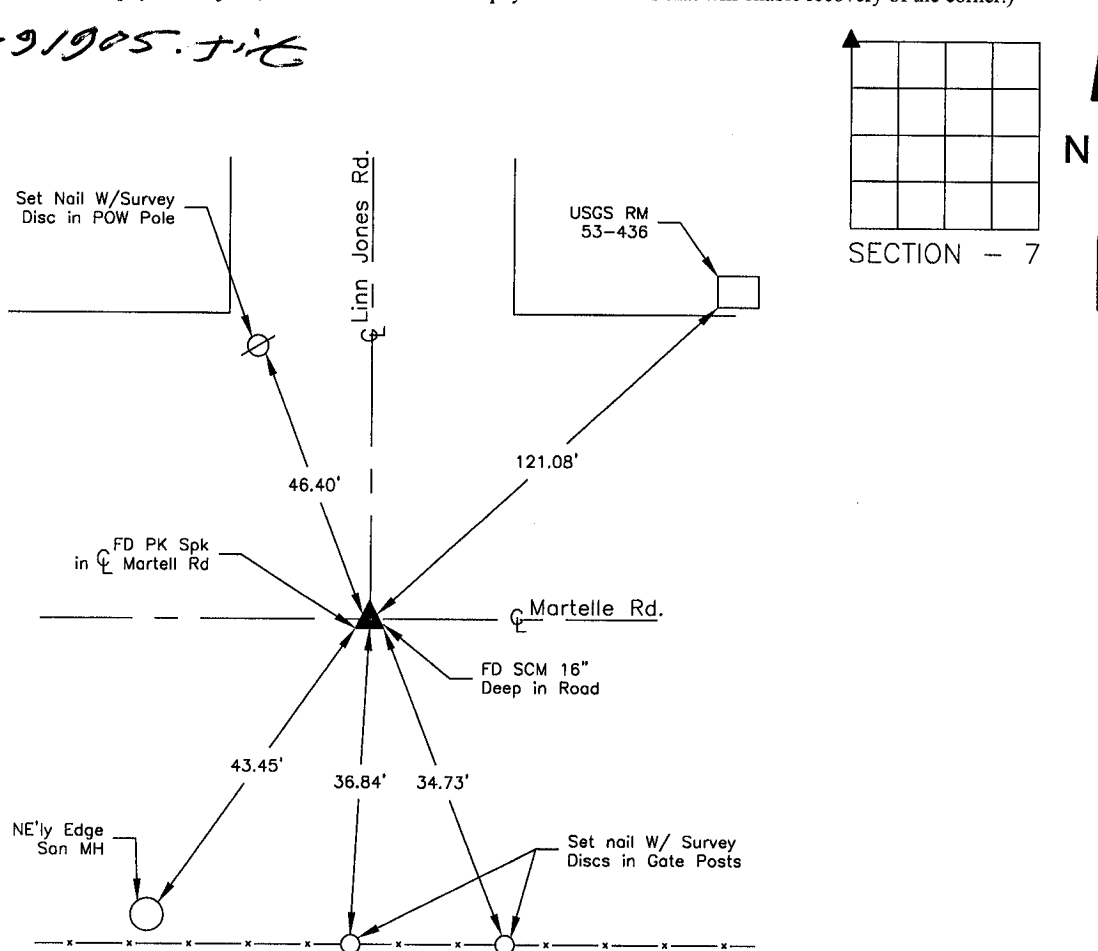
Monument Description and Remarks: NW Corner Sec 7-83-4 Found SCM Buried Approx. 16" in Seal Coat Road. Corner was Found from Previous Ties. Corners were Found for Survey Recorded in Book 328 Page 127 of the Jones County Recorders Office.

PLAN - VIEW

(Show a minimum of three reference ties to durable physical objects, relevant monuments and physical conditions that will enable recovery of the corner.)

83407a-091905.tif

243



NW Cor 7-83-4

I hereby certify that this land surveying document was prepared and the related survey work was performed by me or under my direct personal supervision and that I am a duly licensed Land Surveyor under the laws of the State of Iowa

Signature: *Leo D. Wooder* Date: *9/01/2005*

List Corners to be Indexed

Corners	Section	Twp	Range
NW Cor	7	83	4

UNITED STATES PUBLIC LAND SURVEY CORNER CERTIFICATE

OF

Land Survey Monuments situated in Section 6, Township 83, Range 4, of the Fifth Principal Meridian, JONES County, Iowa. Previously recorded in _____ in County Recorder's Office.

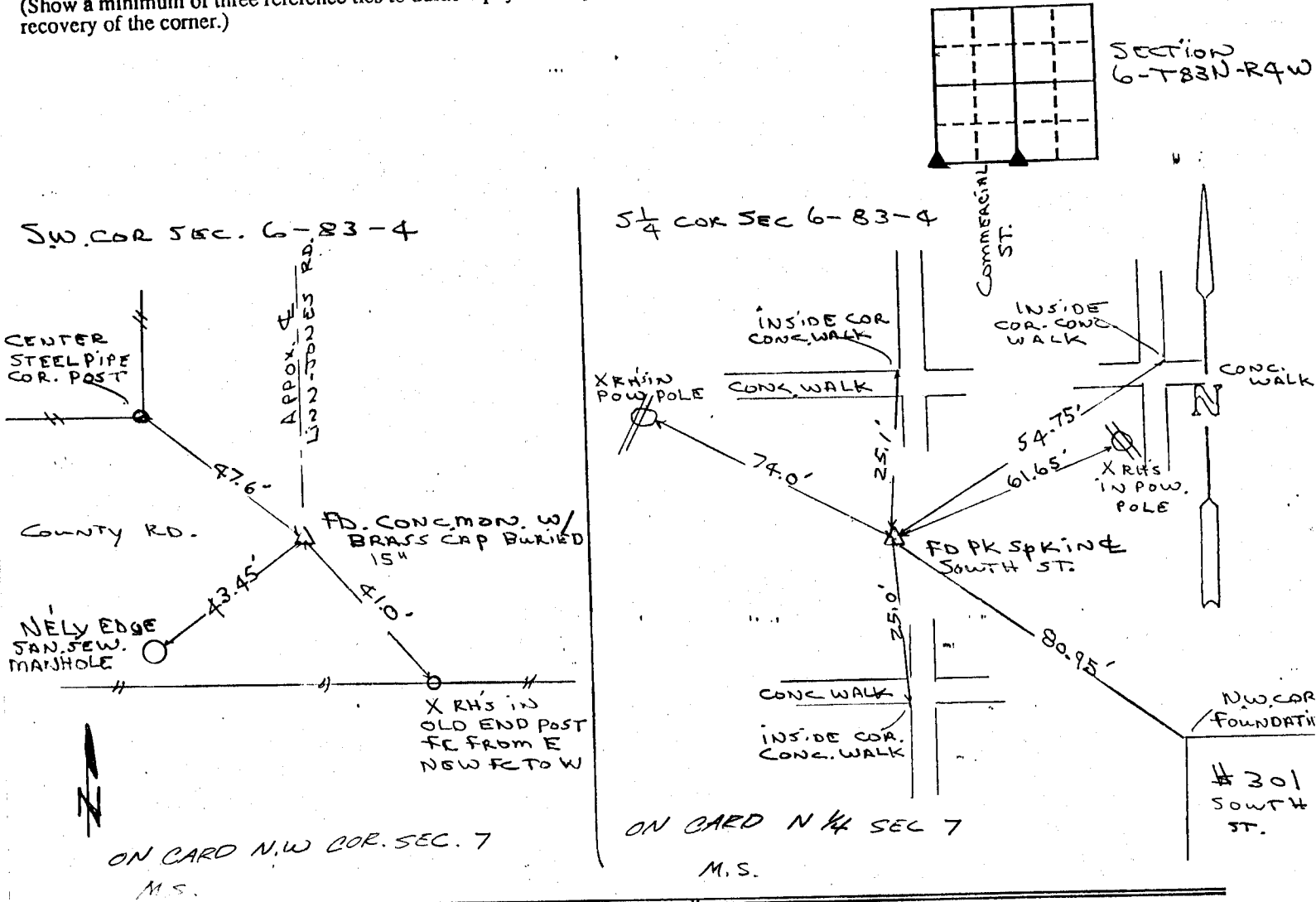
(Show reason for preparing this certificate, the evidence and detailed procedures used in establishing the corner positions and monumentation found or placed.)

Monument Description and Remarks: SECTION CORNERS USED IN PLAT OF SURVEY, PARCELS "C" AND "D" FOR DENNIS PEARSON, MARTELLE, JONES COUNTY, IOWA IN SECTIONS 6 AND 7 TOWNSHIP 83 NORTH, RANGE 4 WEST.

PROJECT NUMBER 192179 FIELD BOOK NUMBER 191 PAGE 62

PLAN - VIEW

(Show a minimum of three reference ties to durable physical objects, relevant monuments and physical conditions that will enable recovery of the corner.)



I hereby certify that the survey work was completed and this certificate was prepared by me or under my direct personal supervision and that I am a duly registered land surveyor under the laws of the state of Iowa.

Signature: Donald A. Thomas
Name typed or printed:

Date: 11-2-92 Reg. No. 6019



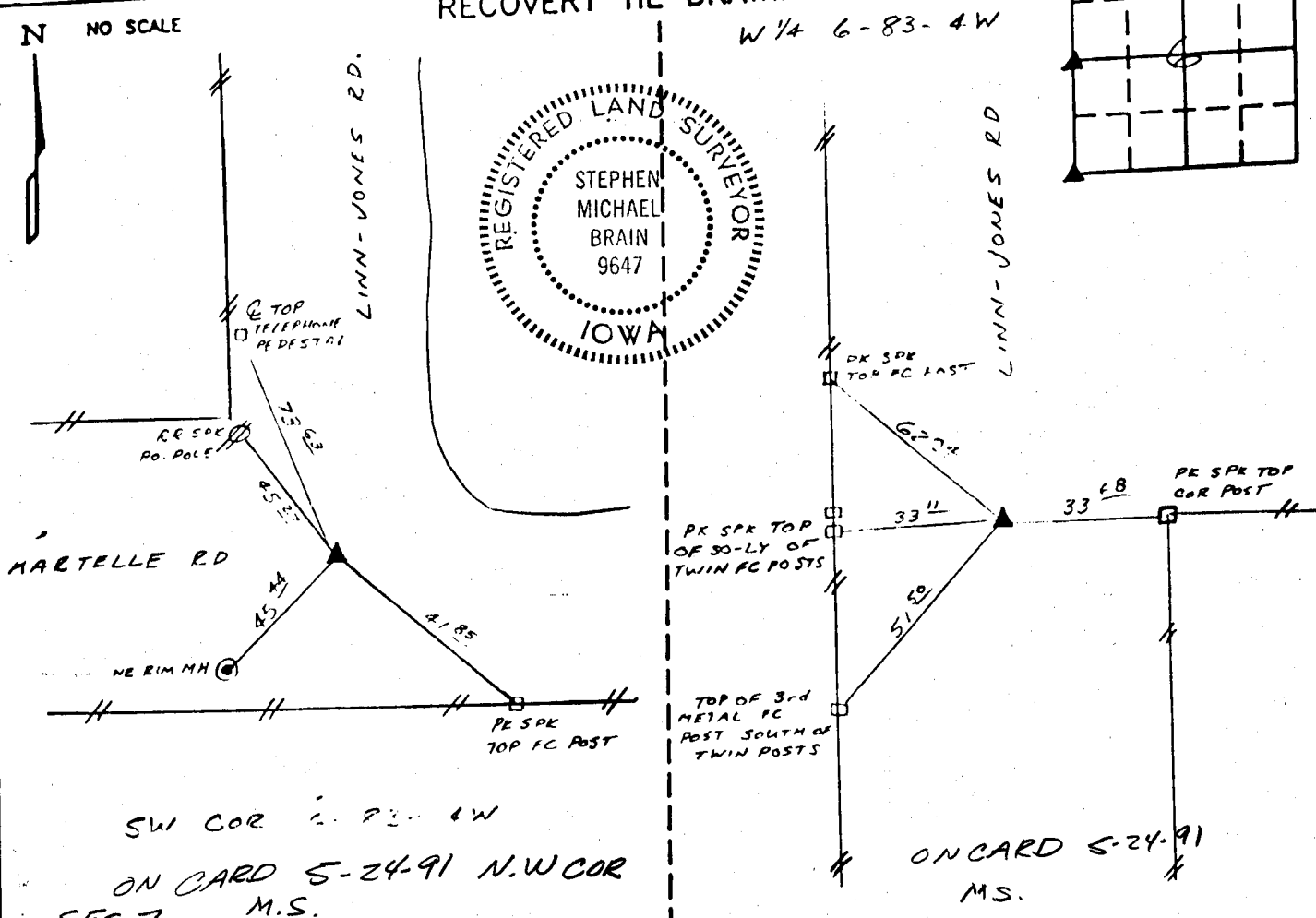
Corners	Section	Twp	Range
SW COR.	6	83	4
S 1/4 COR	6	83	4

83407a-110292
83407c-110292

UNITED STATES PUBLIC LAND SURVEY CORNER CERTIFICATE

LAND SURVEY MONUMENTS SITUATED IN SECTION 6, TOWNSHIP 83,
RANGE 4-W, OF THE 5th. PRINCIPAL MERIDIAN, JONES
COUNTY, IOWA.

RECOVERY TIE DRAWING



I HEREBY DECLARE THAT THE SURVEY WORK WAS COMPLETED AND THIS CERTIFICATE WAS PREPARED BY ME OR UNDER MY DIRECT PERSONAL SUPERVISION AND THAT I AM A DULY REGISTERED LAND SURVEYOR UNDER THE LAWS OF THE STATE OF IOWA.

Stephen Michael Brain 5/6/91
STEPHEN MICHAEL BRAIN, P.E. & L.S. 9647

List Corners to be Indexed			
Corners	Section	Twp	Range
NE	12	83	5W
NW	7	83	4W
SE	1	83	5W
E 1/4	1	83	5W

83406K-050691
834079-050691

MENT ENGINEERING, INC.
HIAWATHA, IOWA

UNITED STATES PUBLIC LAND SURVEY CORNER CERTIFICATE OF

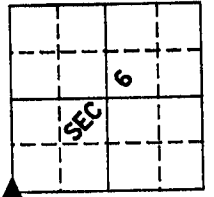
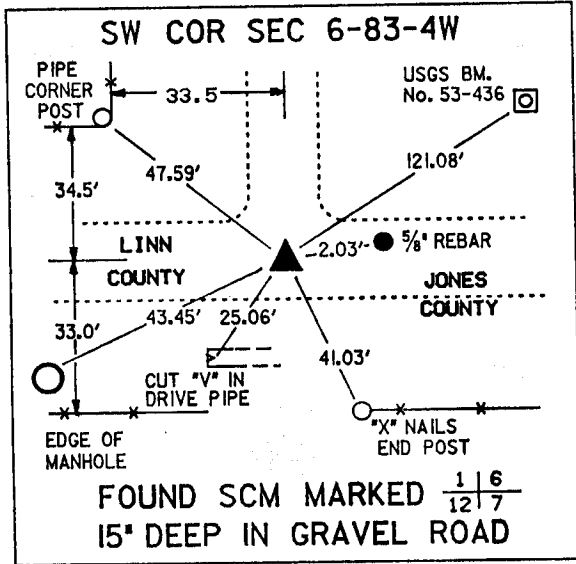
LAND SURVEY MONUMENTS SITUATED IN SECTION 6, TOWNSHIP 83, RANGE 4W, OF THE 5TH PRINCIPAL MERIDIAN JONES COUNTY IOWA.
PREVIOUSLY RECORDED IN BOOK 295 PAGE 126 DOC. No. 1180 and BOOK 302 PAGE 211 DOC No. 2721 IN COUNTY RECORDER'S OFFICE.
(book, page, document number, etc.)

(Show reason for preparing this certificate, the evidence and detailed procedures used in establishing the corner positions and monumentation found or placed.)

MONUMENT DESCRIPTION AND REMARKS: RE-REFERENCED CORNER FOR R.O.W. ACQUISITION

PLAN - VIEW

(Show a minimum of three reference ties to durable physical objects, relevant monuments and physical conditions that will enable recovery of the corner.)

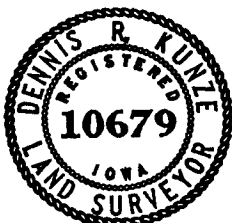


*ON CARD - SW COR.
SEC. 7 11-5-91 M.S.*

I hereby certify that the survey work was completed and this certificate was prepared by me or under my direct personal supervision and that I am a duly registered land surveyor under the laws of the state of Iowa.

Signature: *Dennis R. Kunze*
DENNIS R. KUNZE

Date: 10-1-1991 Reg. No. 10679



LAND CORNERS TO BE RECORDED			
Corners	Section	Twp.	Range
SW	6	T-83-N	R-4-W

83407a-100191