

2005 3155

FILED
RECORDERS OFFICE
JONES COUNTY IOWA

05 SEP -6 PM 12:24

MARIE KRUTZFIELD
RECORDER 700P SLSI 9-90

Prepared By: Leo D. Wooder, L.S. #14676 Anderson-Bogert Engineers & Surveyors, Inc.
4001 River Ridge Dr. N.E. Cedar Rapids, Iowa 52402 Phone: (319) 377-4629

UNITED STATES PUBLIC LAND SURVEY CORNER CERTIFICATE

OF

Land Survey Monuments situated in Section 7, Township 83N, Range 4W, of the Fifth Principal Meridian, Jones County, Iowa.
Previously recorded in Book 328, Page 127 in County Recorders Office.
(book, page, document number, ect.)

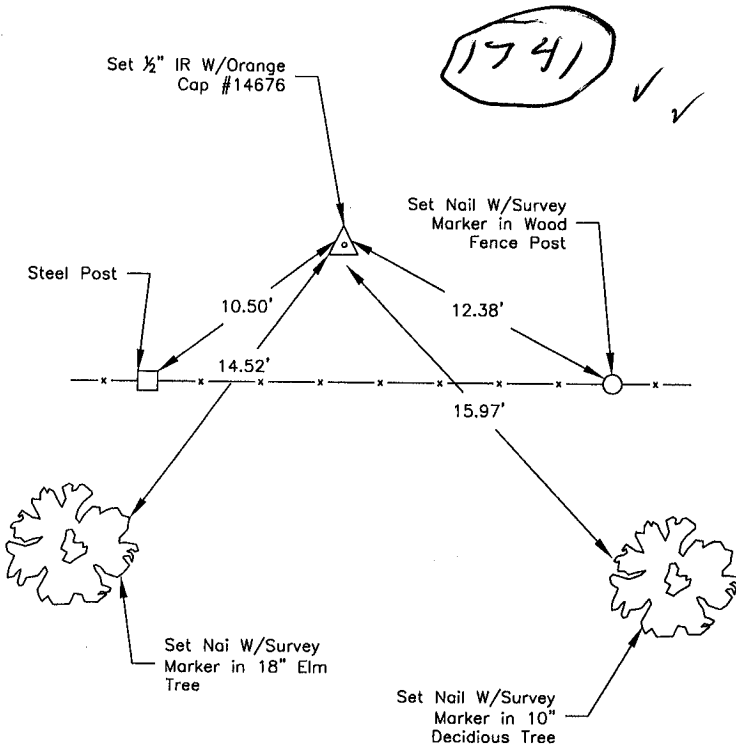
(Show reason for preparing this certificate, the evidence and detailed procedures used in establishing the corner positions and monumentation found or placed.)

Monument Description and Remarks: N $\frac{1}{4}$ Cor Sec 7-83-4 Found PK Spk in Centerline of South St. NW Cor SW $\frac{1}{4}$ NE $\frac{1}{4}$ 7 Set $\frac{1}{2}$ " IR W/Orange Cap #14676 on Line +Midway Between N $\frac{1}{4}$ Cor 7 + Center 7
Corners were found for survey recorded as Instrument #20053039 in the Jones County Recorders Office.

PLAN - VIEW

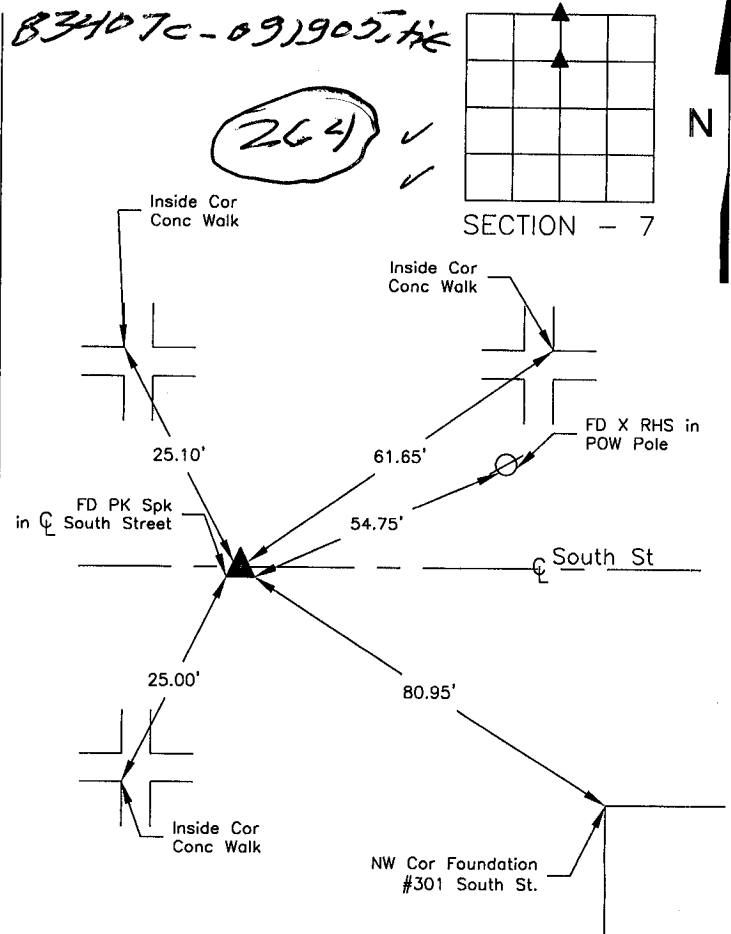
(Show a minimum of three reference ties to durable physical objects, relevant monuments and physical conditions that will enable recovery of the corner.)

B3407b-091905.tif



NW Cor SW $\frac{1}{4}$ NE $\frac{1}{4}$

B3407c-091905.tif



N $\frac{1}{4}$ Cor 7-83-4

I hereby certify that this land surveying document was prepared and the related survey work was performed by me or under my direct personal supervision and that I am a duly licensed Land Surveyor under the laws of the State of Iowa

Signature: _____ Date: 9/21/2005

List Corners to be Indexed

Corners	Section	Twp	Range
N $\frac{1}{4}$ Cor	7	83	4

UNITED STATES PUBLIC LAND SURVEY CORNER CERTIFICATE

OF

Land Survey Monuments situated in Section 6, Township 83, Range 4, of the Fifth Principal Meridian, JONES County, Iowa. Previously recorded in _____ in County Recorder's Office.

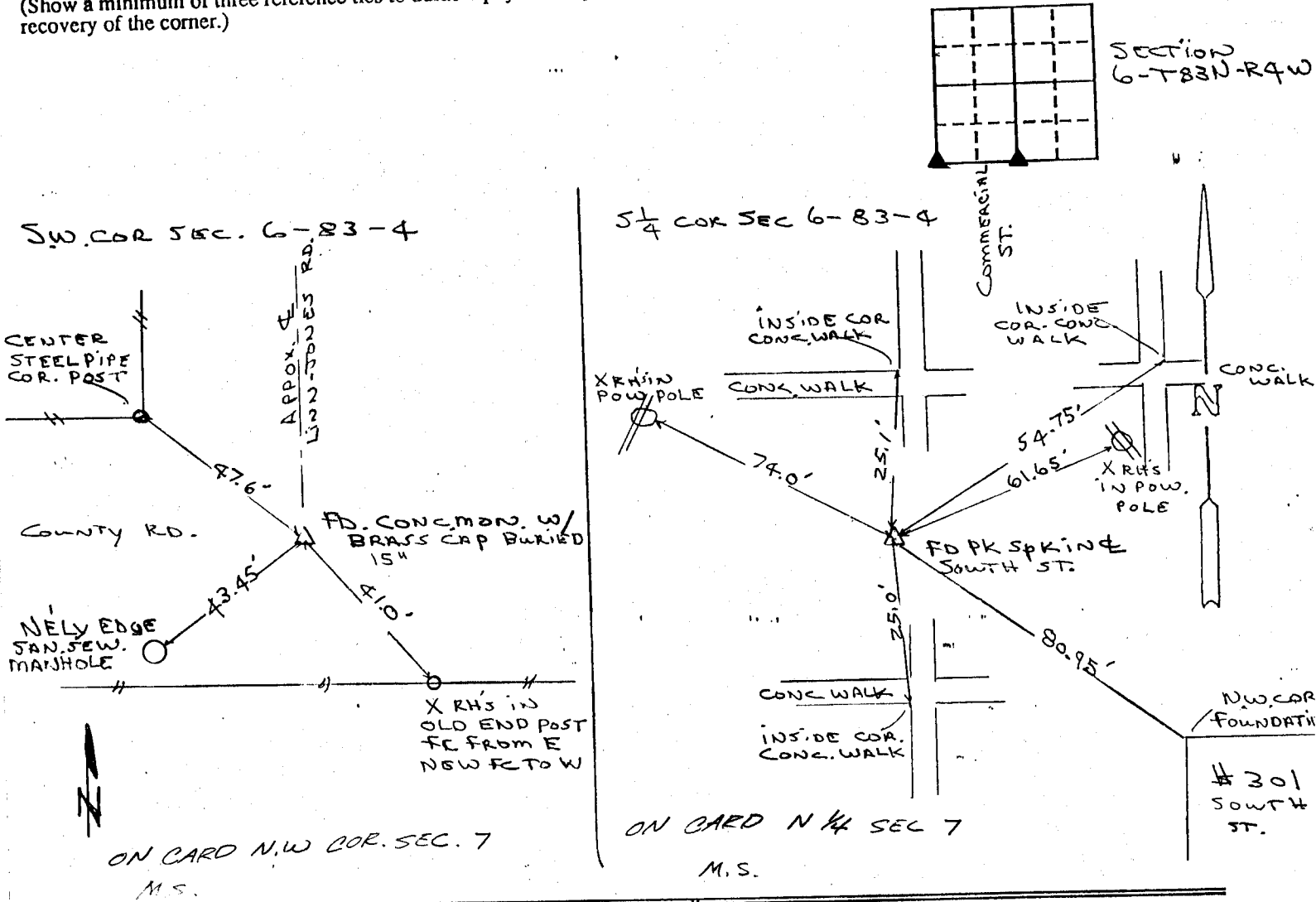
(Show reason for preparing this certificate, the evidence and detailed procedures used in establishing the corner positions and monumentation found or placed.)

Monument Description and Remarks: SECTION CORNERS USED IN PLAT OF SURVEY, PARCELS "C" AND "D" FOR DENNIS PEARSON, MARTELLE, JONES COUNTY, IOWA IN SECTIONS 6 AND 7 TOWNSHIP 83 NORTH, RANGE 4 WEST.

PROJECT NUMBER 192179 FIELD BOOK NUMBER 191 PAGE 62

PLAN - VIEW

(Show a minimum of three reference ties to durable physical objects, relevant monuments and physical conditions that will enable recovery of the corner.)



I hereby certify that the survey work was completed and this certificate was prepared by me or under my direct personal supervision and that I am a duly registered land surveyor under the laws of the state of Iowa.

Signature: Donald A. Thomas
Name typed or printed:

Date: 11-2-92 Reg. No. 6019



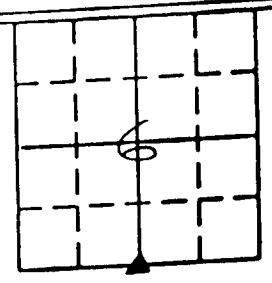
Corners	List Corners to be Indexed		
	Section	Twp	Range
SW COR.	6	83	4
S 1/4 COR	6	83	4

83407a-110292
83407c-110292

UNITED STATES PUBLIC LAND SURVEY CORNER CERTIFICATE

LAND SURVEY MONUMENTS SITUATED IN SECTION 6, TOWNSHIP 83,
RANGE 4W, OF THE 5th. PRINCIPAL MERIDIAN, JONES
COUNTY, IOWA.

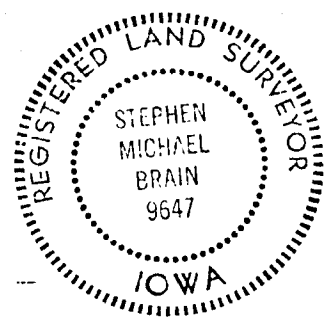
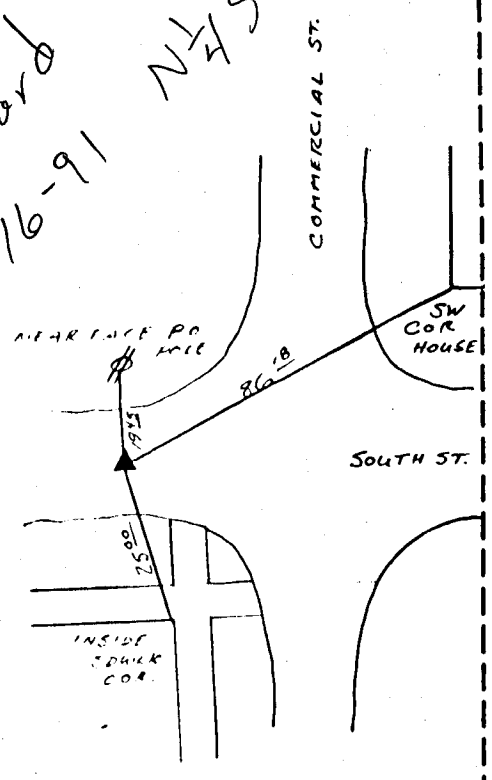
RECOVERY TIE DRAWING



N NO SCALE

S 1/4 G-83-4W

*ON Cor'd
5-16-91 N 1/4 Sec. 7*



PREVIOUSLY RECORDED IN BOOK 295 PAGE 150

MONUMENT DESCRIPTION AND HOW ESTABLISHED:
FOUND PK SPR

PREVIOUSLY RECORDED IN BOOK _____ PAGE _____
MONUMENT DESCRIPTION AND HOW ESTABLISHED: _____

I HEREBY DECLARE THAT THE SURVEY WORK WAS COMPLETED AND THIS CERTIFICATE WAS PREPARED BY ME OR UNDER MY DIRECT PERSONAL SUPERVISION AND THAT I AM A DULY REGISTERED LAND SURVEYOR UNDER THE LAWS OF THE STATE OF IOWA.

Stephen Michael Brain
STEPHEN MICHAEL BRAIN, P.E. & L.S. 9647

List Corners to be Indexed			
Corners	Section	Twp	Range
N 1/4	7	83	4W

83407c-050691

RAMENT ENGINEERING, INC.
HIAWATHA, IOWA