

Instrument #: 2016-3615
 12/20/2016 02:40:15 PM Total Pages: 1
 ZSC SECTION CORNER CERTIFICATE
 Recording Fee: \$7.00 Transfer Tax: \$0
 Sheri L. Jones, Recorder, Jones County Iowa



PREPARED BY & RETURN TO: BRADLEY R. GEATER, PLS / MCCLURE ENGINEERING COMPANY / 1740 LININGER LANE, NORTH LIBERTY, IA 52317 / 319-626-9090

U.S. PUBLIC LAND SURVEY CORNER CERTIFICATE

OF LAND SURVEY MONUMENT SITUATED IN SECTION 7, TOWNSHIP 83, RANGE 4 WEST OF THE FIFTH PRINCIPAL MERIDIAN,
 JONES COUNTY, IOWA. PREVIOUSLY RECORDED IN JONES COUNTY RECORDER'S OFFICE IN BOOK 2000, PAGE 833.

REASON FOR PREPARING THIS CERTIFICATE:

- CORNER RESTORATION (Accepted or perpetuated corner)
- CORNER ESTABLISHMENT (Any PLSS corner created, but not monumented in the original survey; Center 1/4, 1/16 Corner, etc.)
- CORNER REESTABLISHMENT (Lost corner)

DESCRIPTION OF ORIGINAL AND SUBSEQUENT SURVEYS REFERENCING THIS CORNER LOCATION:

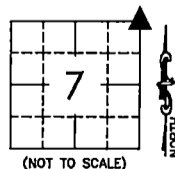
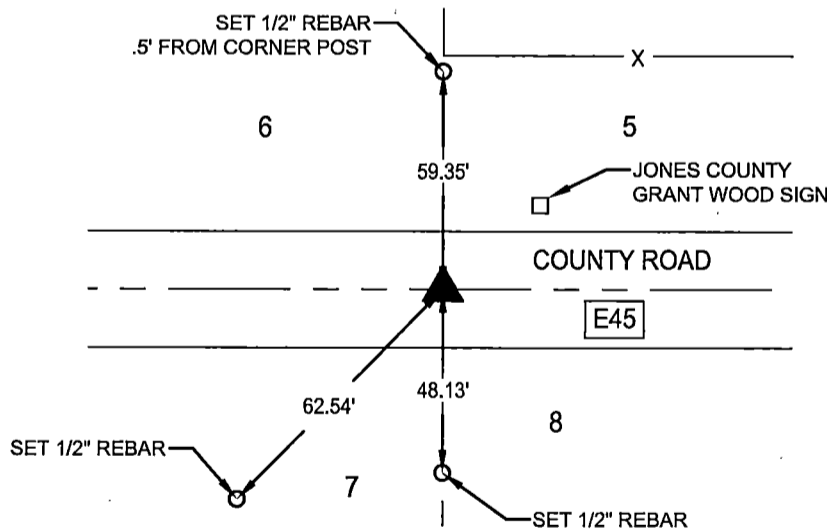
- PREVIOUSLY RECORDED IN JONES COUNTY RECORDERS OFFICE IN BOOK 2000, PAGE 833.
- SECTION CORNER PRESERVATION DURING ROAD OVERLAY PROJECT NUMBER STP-S-C053(81)--5E-53

DESCRIPTION OF CORNER EVIDENCE FOUND OR A DETAILED STATEMENT OF THE METHOD USED TO ESTABLISH / REESTABLISH THIS CORNER:

- NE CORNER SECTION 7-83-4 - FOUND 5/8" REBAR WITH ORANGE CAP USING PREVIOUS CERTIFICATE.

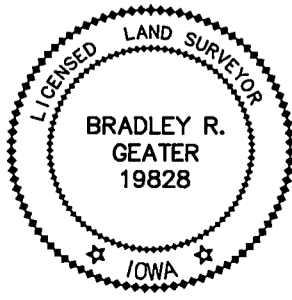
DESCRIPTION AND SKETCH OF THE MONUMENT AND ITS ACCESSORIES ESTABLISHED TO PERPETUATE THE LOCATION OF THIS CORNER:

- NE CORNER SECTION 7-83-4 - SET MAG NAIL AT 5/8" REBAR LOCATION AFTER COMPLETION OF OVERLAY.



MCCLURETM
 ENGINEERING CO.
 building strong communities.

1740 Lininger Lane
 North Liberty, Iowa 52317
 319-626-9090
 fax 319-626-9095



I HEREBY CERTIFY THAT THIS LAND SURVEYING DOCUMENT WAS PREPARED AND THE RELATED WORK WAS PERFORMED BY ME OR UNDER MY DIRECT PERSONAL SUPERVISION AND THAT I AM A DULY LICENSED LAND SURVEYOR UNDER THE LAWS OF THE STATE OF IOWA.

SIGNATURE: *Bradley R. Geater* DATE: 12-20-2016
 BRADLEY R. GEATER

MY LICENSE RENEWAL DATE IS DECEMBER 31, 2017
 PAGES OR SHEETS COVERED BY THIS SEAL: THIS SHEET

DATE SURVEYED: 09-08-2016
 DRAWING PATH: Projects\JNC 20716057\Dwgs\Corners\
 CC01 NE 7-83-4.dwg

CORNERS TO BE INDEXED			
CORNER	SEC.	TWP.	RGE.
NE	7	83	4
SE	6	83	4
SW	5	83	4
NW	8	83	4

Greenfield

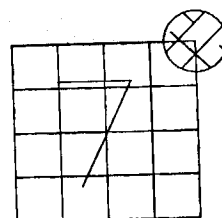
00 MAR 10 AM 8:41

MARIE KRUTZFIELD *NO FEE*
RECORDER HWY. 64, ANAMOSA, IOWA

UNITED STATES PUBLIC LAND SURVEY CORNER CERTIFICATE

LAND SURVEY MONUMENTS SITUATED IN SECTION 7, TOWNSHIP 83
NORTH, RANGE 4 WEST OF THE 5TH P.M., JONES COUNTY, IOWA

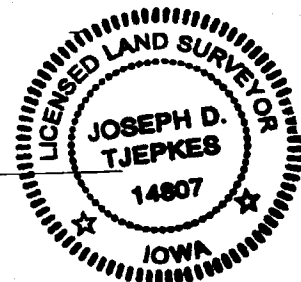
NAIL TOP OF FENCE POST



NO SCALE

COUNTY ROAD
E-45

SET 5/8"X24" REBAR WITH
ORANGE CAP LS 14807
0.03' BELOW PAVEMENT,
NE COR. SEC. 7, T83N,
R4W



CUT CROSS SOUTH EDGE OF PAVEMENT

PREVIOUSLY RECORDED IN BOOK 302, PAGE 270
MONUMENT DESCRIPTION AND HOW ESTABLISHED FOUND

CROSS IN PAVEMENT PER CORNER TIES IN BOOK AND PAGE INDICATED ABOVE. THE BRASS
PLUG SHOWN IN TIES WAS GONE. DRILLED HOLE AND SET 5/8"X24" REBAR WITH ORANGE CAP
LS 14807 0.03' BELOW PAVEMENT AND ESTABLISHED NEW TIES.

I hereby declare that this plat, survey or report
was made by me or under my direct personal
supervision and that I am a duly registered Land
Surveyor under the laws of the State of Iowa.

Signed:

Joseph D. Tjepkes 3-10-2000

Joseph D. Tjepkes L.S. Iowa Reg. No. 14807
My Registration Renewal Date is December 31, 2000

CORNERS TO BE INDEXED

CORNER	SECTION	TOWNSHIP	RANGE
N.E.	7	83N	4W

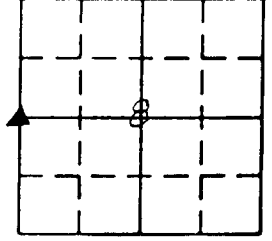
JONES COUNTY ENGINEER
19501 HWY. 64,
ANAMOSA, IOWA

**UNITED STATES PUBLIC LAND
SURVEY CORNER CERTIFICATE**

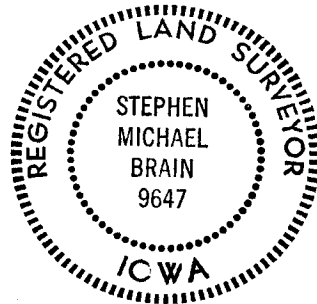
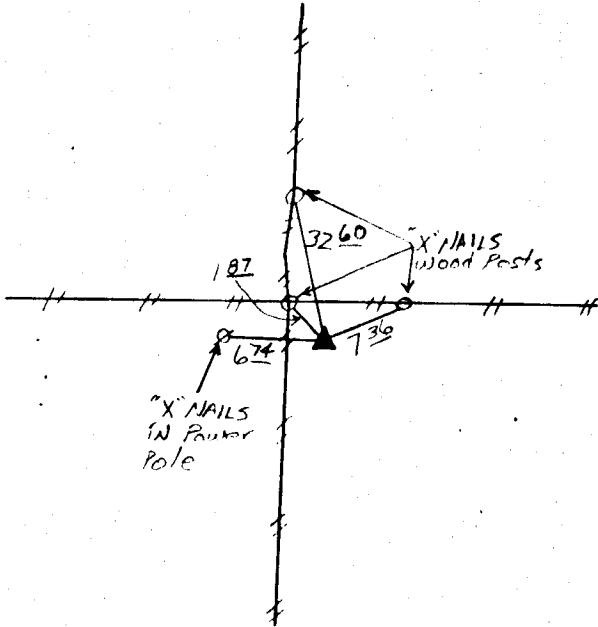
LAND SURVEY MONUMENTS SITUATED IN SECTION 8, TOWNSHIP 83N,
RANGE 4W, OF THE 5th. PRINCIPAL MERIDIAN, JONES
COUNTY, IOWA.

N NO SCALE

RECOVERY TIE DRAWING



W 1/4 COR.



ON CARD 2-6-92 E 1/4 COR SEC. 7

PREVIOUSLY RECORDED IN BOOK _____ PAGE _____

MONUMENT DESCRIPTION AND HOW ESTABLISHED: _____

FOUND CONC. MON. 6" below surface

PREVIOUSLY RECORDED IN BOOK _____ PAGE _____

MONUMENT DESCRIPTION AND HOW ESTABLISHED: _____

I HEREBY DECLARE THAT THE SURVEY WORK WAS COMPLETED AND THIS CERTIFICATE WAS PREPARED BY ME OR UNDER MY DIRECT PERSONAL SUPERVISION AND THAT I AM A DULY REGISTERED LAND SURVEYOR UNDER THE LAWS OF THE STATE OF IOWA.

Stephen Michael Brain 1-14-92
STEPHEN MICHAEL BRAIN, P.E. & L.S. 9647

List Corners to be Indexed

Corners	Section	Twp	Range
E 1/4	7	83	4W

834070-011492

RAMENT ENGINEERING, INC.
HIAWATHA, IOWA

SECTION CORNER CERTIFICATE

OF
 LAND SURVEY MONUMENTS SITUATED IN SECTION 7, TOWNSHIP 83 NORTH,
 RANGE 4 WEST, OF THE FIFTH PRINCIPAL MERIDIAN, JONES, COUNTY, IOWA.

PREVIOUSLY RECORDED IN BOOK _____ AT PAGE _____ .

FOR RECORDER'S USE

REASON FOR PREPARING CERTIFICATE:

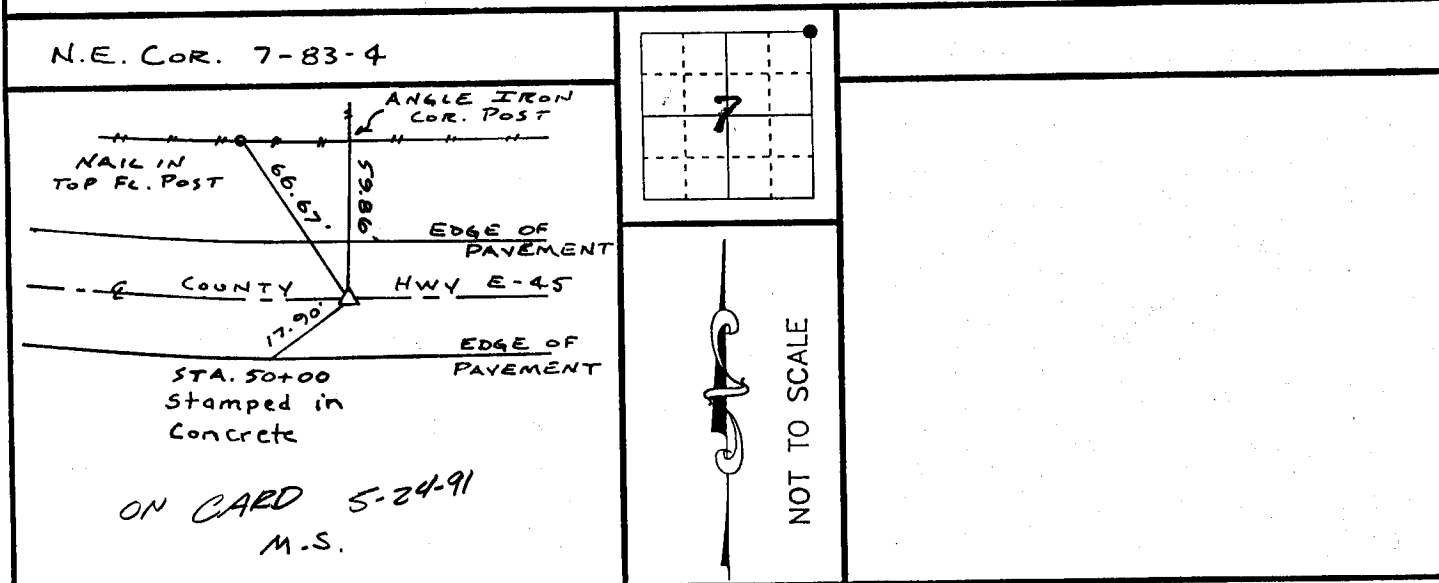
- A) THERE IS NO CERTIFICATE FOR THE CORNER ON FILE WITH THE RECORDER OF THE COUNTY IN WHICH THE CORNER IS LOCATED.
- B) CORNER POSITION DIFFERS FROM THAT SHOWN IN THE PUBLIC RECORDS OF THE COUNTY IN WHICH THE CORNER IS LOCATED.
- C) THE CORNER MONUMENT HAS BEEN REPLACED OR MODIFIED.
- D) THE REFERENCE TIES REFERRED TO IN AN EXISTING PUBLIC RECORD ARE INCORRECT.

B-302
P-270

MONUMENT DESCRIPTION AND REMARKS :

N.E. CORNER SEC. 7-83-4 FD. CUT 'X' IN BRASS PLUG IN
 & COUNTY HWY. E-45

RECOVERY TIE DRAWING



I, GLEN D. MEISNER, CERTIFY THAT THE CORNER LOCATION(S) SHOWN ON THIS RECORD WERE DETERMINED BY ME OR UNDER MY DIRECTION AND CONTROL AND THAT THIS U.S. PUBLIC LAND SURVEY MONUMENT RECORD IS CORRECT AND COMPLETE TO THE BEST OF MY KNOWLEDGE AND BELIEF.

Glen D. Meisner 5-21-91
 GLEN D. MEISNER L.S. NO 8165 DATE

DZMORL	<input type="checkbox"/> GOVERNMENT CORNER <input type="checkbox"/> 5/8" TIE PIN SET	SHEET TITLE: U.S. PUBLIC LAND SURVEY RECORD		HALL AND HALL ENGINEERS, INC. 226 29TH STREET DRIVE S.E. CEDAR RAPIDS, IOWA 52403 319-362-9548	
	<input type="checkbox"/> CENTERLINE <input type="checkbox"/> EXISTING FENCE LINE <input type="checkbox"/> R.O.W. LINE	PROJECT TITLE: MARVIN HUNTER SURVEY			
	D W N R.W.B.	K I C	A P P	D A T E 5-20-91	SCALE NONE
				F N O B 0722	P N O J 4456

83407a-052191