

Instrument #: 2016-3614
 12/20/2016 02:40:15 PM Total Pages: 1
 ZSC SECTION CORNER CERTIFICATE
 Recording Fee: \$7.00 Transfer Tax: \$0
 Sheri L. Jones, Recorder, Jones County Iowa



PREPARED BY & RETURN TO: BRADLEY R. GEATER, PLS / MCCLURE ENGINEERING COMPANY / 1740 LININGER LANE, NORTH LIBERTY, IA 52317 / 319-626-9090

U.S. PUBLIC LAND SURVEY CORNER CERTIFICATE

OF LAND SURVEY MONUMENT SITUATED IN SECTION 5, TOWNSHIP 83, RANGE 4 WEST OF THE FIFTH PRINCIPAL MERIDIAN,
 JONES COUNTY, IOWA. NOT PREVIOUSLY RECORDED IN JONES COUNTY RECORDER'S OFFICE AS SECTION CORNER CERTIFICATE.

REASON FOR PREPARING THIS CERTIFICATE:

- CORNER RESTORATION (Accepted or perpetuated corner)
- CORNER ESTABLISHMENT (Any PLSS corner created, but not monumented in the original survey; Center 1/4, 1/16 Corner, etc.)
- CORNER REESTABLISHMENT (Lost corner)

DESCRIPTION OF ORIGINAL AND SUBSEQUENT SURVEYS REFERENCING THIS CORNER LOCATION:

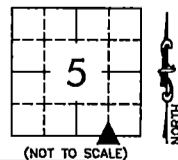
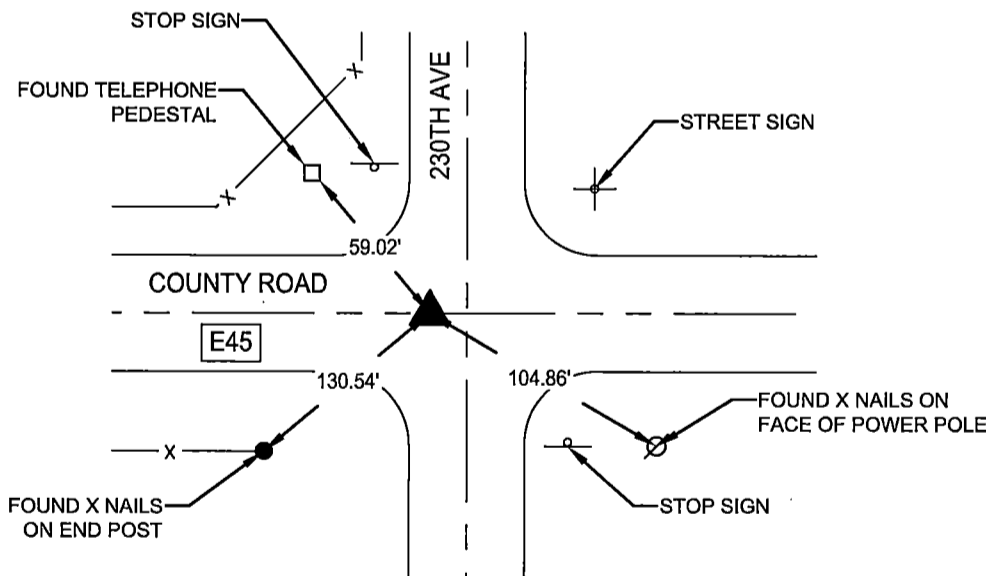
- MONUMENT FOUND MATCHES COUNTY ENGINEER'S FIELD SECTION CORNER TIE WORKSHEET POINT NUMBER 2014 DATED 9-8-16. MONUMENT WAS SET IN 1997 BY DANIEL JOHNSON WITH HALL AND HALL ENGINEERS
- SECTION CORNER PRESERVATION DURING ROAD OVERLAY PROJECT NUMBER STP-S-C053(81)--5E-53

DESCRIPTION OF CORNER EVIDENCE FOUND OR A DETAILED STATEMENT OF THE METHOD USED TO ESTABLISH / REESTABLISH THIS CORNER:

- SOUTHEAST CORNER SW 1/4 SE 1/4 SECTION 5-83-4 - FOUND 1" CUT X IN CONCRETE USING PREVIOUS CERTIFICATE.

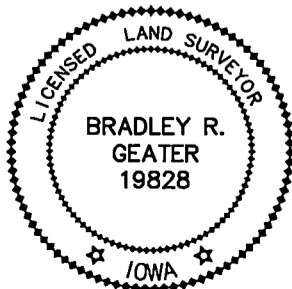
DESCRIPTION AND SKETCH OF THE MONUMENT AND ITS ACCESSORIES ESTABLISHED TO PERPETUATE THE LOCATION OF THIS CORNER:

- SOUTHEAST CORNER SW 1/4 SE 1/4 SECTION 5-83-4 SET SURVEY BRASS MONUMENT AT CUT X LOCATION AFTER COMPLETION OF OVERLAY.



MCCLURETM
 ENGINEERING CO.
 building strong communities.

1740 Lininger Lane
 North Liberty, Iowa 52317
 319-626-9090
 fax 319-626-9095



I HEREBY CERTIFY THAT THIS LAND SURVEYING DOCUMENT WAS PREPARED AND THE RELATED WORK WAS PERFORMED BY ME OR UNDER MY DIRECT PERSONAL SUPERVISION AND THAT I AM A DULY LICENSED LAND SURVEYOR UNDER THE LAWS OF THE STATE OF IOWA.

SIGNATURE: *Bradley R. Geater* DATE: 12-20-2016
 BRADLEY R. GEATER

MY LICENSE RENEWAL DATE IS DECEMBER 31, 2017
 PAGES OR SHEETS COVERED BY THIS SEAL: THIS SHEET

DATE SURVEYED: 09-08-2016

DRAWING PATH: Projects\JNC 20716057\Dwgs\Corners\
 CC03 SE COR 5-83-4.dwg

CORNERS TO BE INDEXED			
CORNER	SEC.	TWP.	RGE.
SE COR SW1/4 SE1/4	5	83	4
NE COR NW1/4 NE1/4	8	83	4

PREPARED BY HALL & HALL ENGINEERS, INC. 209 29TH STREET N.E. CEDAR RAPIDS, IOWA 52402 (319) 362-9548

SECTION CORNER CERTIFICATE

OF
LAND SURVEY MONUMENTS SITUATED IN SECTION 5, TOWNSHIP 83 NORTH,
RANGE 4 WEST, OF THE FIFTH PRINCIPAL MERIDIAN, JONES COUNTY, IOWA.

PREVIOUSLY RECORDED IN BOOK AT PAGE

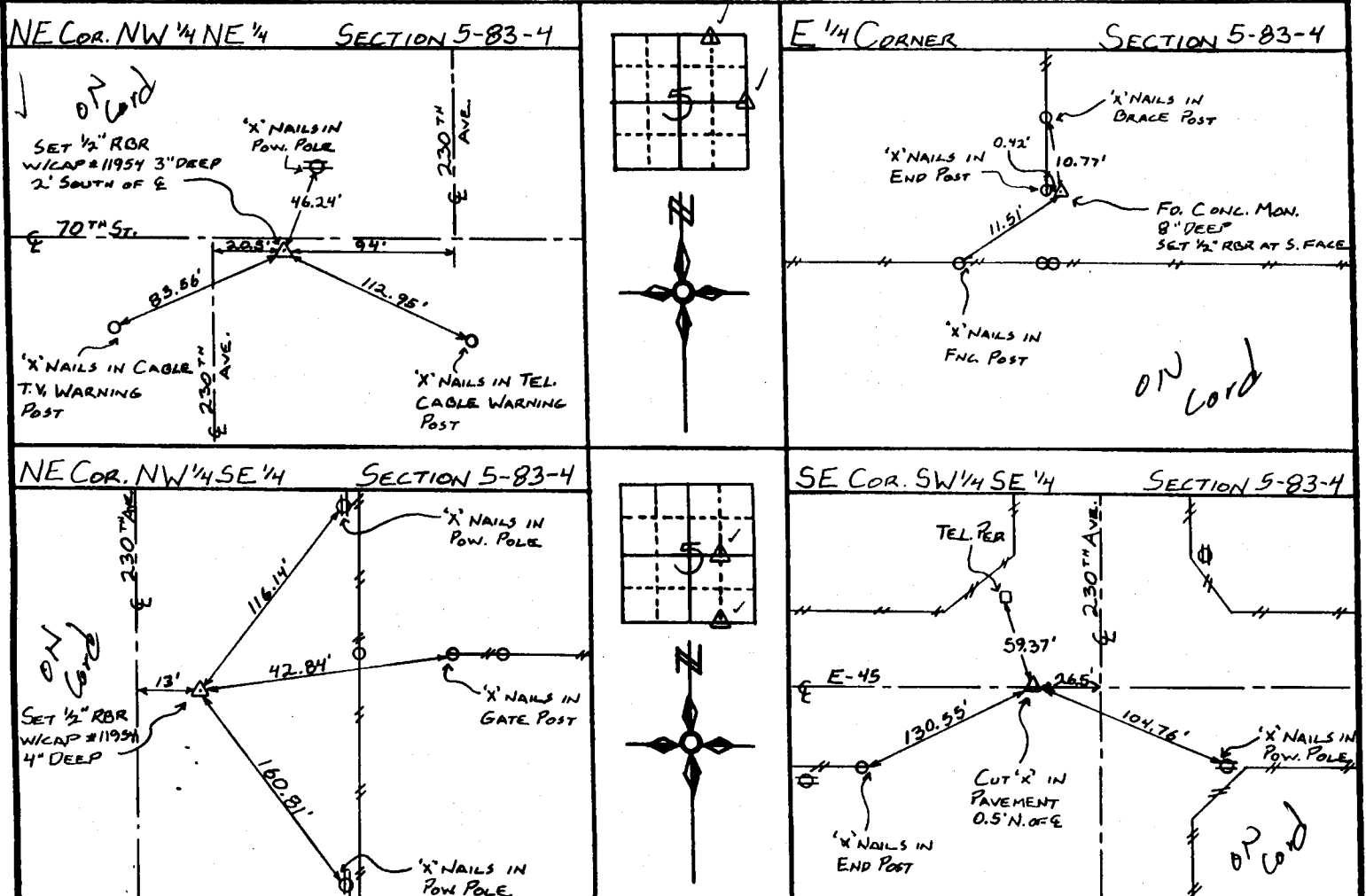
REASON FOR PREPARING CERTIFICATE:

- A) THERE IS NO CERTIFICATE FOR THE CORNER ON FILE WITH THE RECORDER OF THE COUNTY IN WHICH THE CORNER IS LOCATED.
- B) CORNER POSITION DIFFERS FROM THAT SHOWN IN THE PUBLIC RECORDS OF THE COUNTY IN WHICH THE CORNER IS LOCATED.
- C) THE CORNER MONUMENT HAS BEEN REPLACED OR MODIFIED
- D) THE REFERENCE TIES REFERRED TO IN AN EXISTING PUBLIC RECORD ARE INCORRECT

MONUMENT DESCRIPTION AND REMARKS:

NE COR. NW 1/4 NE 1/4 SEC. 5-83-4: SET 1/2" REBAR W/CAP #11954 3" DEEP, 2' SOUTH OF E 70TH ST.
E 1/4 COR. SEC. 5-83-4: FOUND CONC. MON. 8" DEEP, SET 1/2" REBAR AT SOUTH FACE, MON. 0.5' EAST OF N-S FENCE & 3' NORTH OF E-W FENCE.
NE COR. NW 1/4 SE 1/4 SEC. 5-83-4: SET 1/2" REBAR W/CAP #11954 4" DEEP, 13' EAST OF E 230TH AVE. & 7.5' SOUTH OF FENCE E.
SE COR. SW 1/4 SE 1/4 SEC. 5-83-4: SET CUT 'X' IN PAVEMENT, 0.5' NORTH OF E E-45

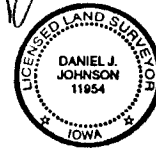
RECOVERY TIE DRAWING



I, DANIEL J. JOHNSON, - CERTIFY THAT THE CORNER LOCATION(S) SHOWN ON THIS RECORD WERE DETERMINED BY ME OR UNDER MY DIRECTION AND CONTROL AND THAT THIS U S PUBLIC LAND SURVEY MONUMENT RECORD IS CORRECT AND COMPLETE TO THE BEST OF MY KNOWLEDGE AND BELIEF

Daniel J. Johnson 10-27-97
DANIEL J. JOHNSON L.S. NO. 11954 DATE

Greenfield



83405d-102797
83405o-102797
83405n-102797
83408d-102797

MY LICENSE RENEWAL DATE IS DECEMBER 31, 1998

LEGEND Δ GOVERNMENT CORNER ● PROPERTY CORNER FOUND ○ 1/2" X 3/4" W/ L.S. CAP SET - - - EXISTING FENCE LINE ——— PROPERTY LINE	SHEET TITLE U.S. PUBLIC LAND SURVEY RECORD	HALL AND HALL ENGINEERS, INC. 209 29TH STREET N.E. CEDAR RAPIDS, IOWA 52402 (319) 362-9548
	PROJECT TITLE ARMSTRONG - BOUNDARY	
DRAWN BY JWP	CHECKED BY JSR	DATE 8/17/04