

Instrument #: 2016-3613
 12/20/2016 02:40:15 PM Total Pages: 1
 ZSC SECTION CORNER CERTIFICATE
 Recording Fee: \$7.00 Transfer Tax: \$0
 Sheri L. Jones, Recorder, Jones County Iowa



PREPARED BY & RETURN TO: BRADLEY R. GEATER, PLS / MCCLURE ENGINEERING COMPANY / 1740 LININGER LANE, NORTH LIBERTY, IA 52317 / 319-626-9090

U.S. PUBLIC LAND SURVEY CORNER CERTIFICATE

OF LAND SURVEY MONUMENT SITUATED IN SECTION 4, TOWNSHIP 83, RANGE 4 WEST OF THE FIFTH PRINCIPAL MERIDIAN,
 JONES COUNTY, IOWA. PREVIOUSLY RECORDED IN JONES COUNTY RECORDER'S OFFICE IN BOOK 2010, PAGE 719.

REASON FOR PREPARING THIS CERTIFICATE:

- CORNER RESTORATION (Accepted or perpetuated corner)
- CORNER ESTABLISHMENT (Any PLSS corner created, but not monumented in the original survey; Center 1/4, 1/16 Corner, etc.)
- CORNER REESTABLISHMENT (Lost corner)

DESCRIPTION OF ORIGINAL AND SUBSEQUENT SURVEYS REFERENCING THIS CORNER LOCATION:

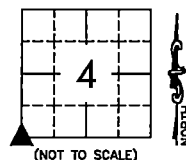
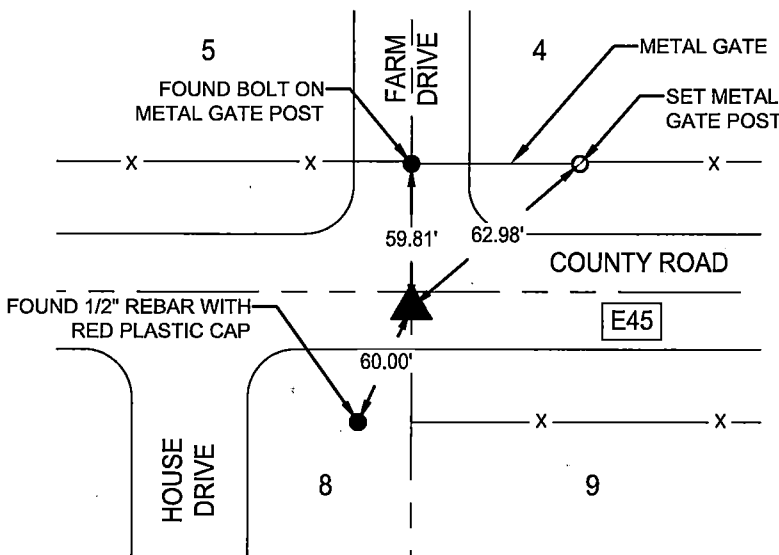
1. PREVIOUSLY RECORDED IN JONES COUNTY RECORDERS OFFICE IN BOOK 2010, PAGE 719.
2. SECTION CORNER PRESERVATION DURING ROAD OVERLAY PROJECT NUMBER STP-S-C053(81)--5E-53

DESCRIPTION OF CORNER EVIDENCE FOUND OR A DETAILED STATEMENT OF THE METHOD USED TO ESTABLISH / REESTABLISH THIS CORNER:

1. SOUTHWEST CORNER SECTION 4-83-4 - FOUND APPROXIMATE 2" CUT X IN CONCRETE USING PREVIOUS CERTIFICATE.

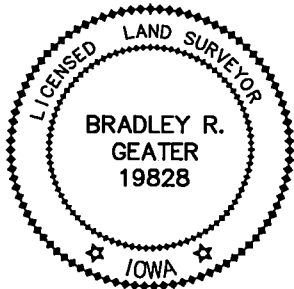
DESCRIPTION AND SKETCH OF THE MONUMENT AND ITS ACCESSORIES ESTABLISHED TO PERPETUATE THE LOCATION OF THIS CORNER:

1. SOUTHWEST CORNER SECTION 4-83-4 SET SURVEY BRASS MONUMENT AT CUT X LOCATION AFTER COMPLETION OF OVERLAY.



McCLURE
 ENGINEERING CO.
 building strong communities.

1740 Lininger Lane
 North Liberty, IA 52317
 319-626-9090
 fax 319-626-9095



I HEREBY CERTIFY THAT THIS LAND SURVEYING DOCUMENT WAS PREPARED AND THE RELATED WORK WAS PERFORMED BY ME OR UNDER MY DIRECT PERSONAL SUPERVISION AND THAT I AM A DULY LICENSED LAND SURVEYOR UNDER THE LAWS OF THE STATE OF IOWA.

SIGNATURE: *Bradley R. Geater* DATE: 12-20-2016
 BRADLEY R. GEATER

MY LICENSE RENEWAL DATE IS DECEMBER 31, 2017
 PAGES OR SHEETS COVERED BY THIS SEAL: THIS SHEET
 DATE SURVEYED: 09-08-2016
 DRAWING PATH: Projects\JNC 20716057\Dwgs\Corners\CC04 SW COR 4-83-4.dwg

CORNERS TO BE INDEXED

CORNER	SEC.	TWP.	RGE.
SW	4	83	4
NW	9	83	4
NE	8	83	4
SE	5	83	4

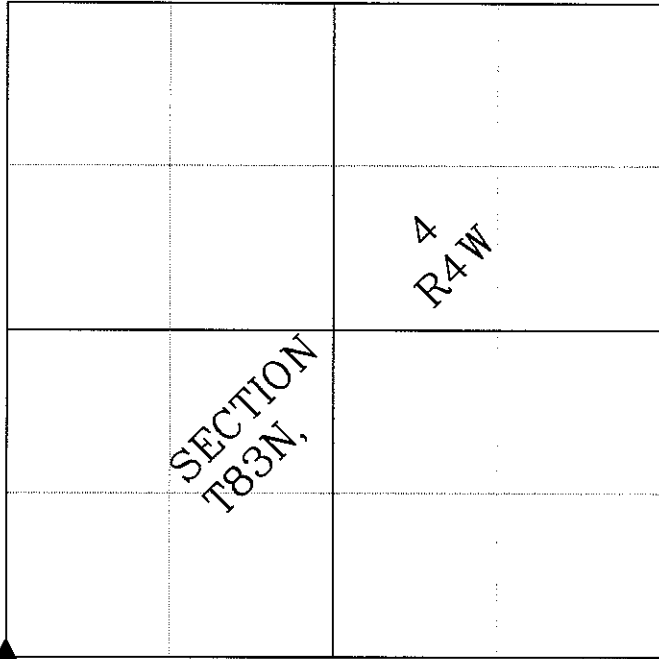
COPY

Jones County
Marie Krutzfield
Fee Book 2010 0719

03/19/2010 @1126AM
ZSC SEC COR CERT # Pages: 1
Book: Page: \$9.00
Total Fees:

PREPARED BY RYAN R. REMLING L.S. HALL & HALL ENGINEERS, INC. 1860 BOYSON RD. HIAWATHA, IA 52233 (319) 362-9548

SECTION CORNER INDEX



U.S. PUBLIC LAND SURVEY CORNER CERTIFICATE

LAND SURVEY MONUMENTS SITUATED IN SECTION 4, TOWNSHIP 83 NORTH, RANGE 4 WEST, OF THE FIFTH PRINCIPAL MERIDIAN, JONES COUNTY IOWA.

REASON FOR PREPARING CERTIFICATE:

- A) THERE IS NO CERTIFICATE FOR THE CORNER ON FILE WITH THE RECORDER OF THE COUNTY IN WHICH THE CORNER IS LOCATED.
- B) CORNER POSITION DIFFERS FROM THAT SHOWN IN THE PUBLIC RECORDS OF THE COUNTY IN WHICH THE CORNER IS LOCATED.
- C) THE CORNER MONUMENT HAS BEEN REPLACED OR MODIFIED.
- D) THE REFERENCE TIES REFERRED TO IN AN EXISTING PUBLIC RECORD ARE INCORRECT OR MISSING.

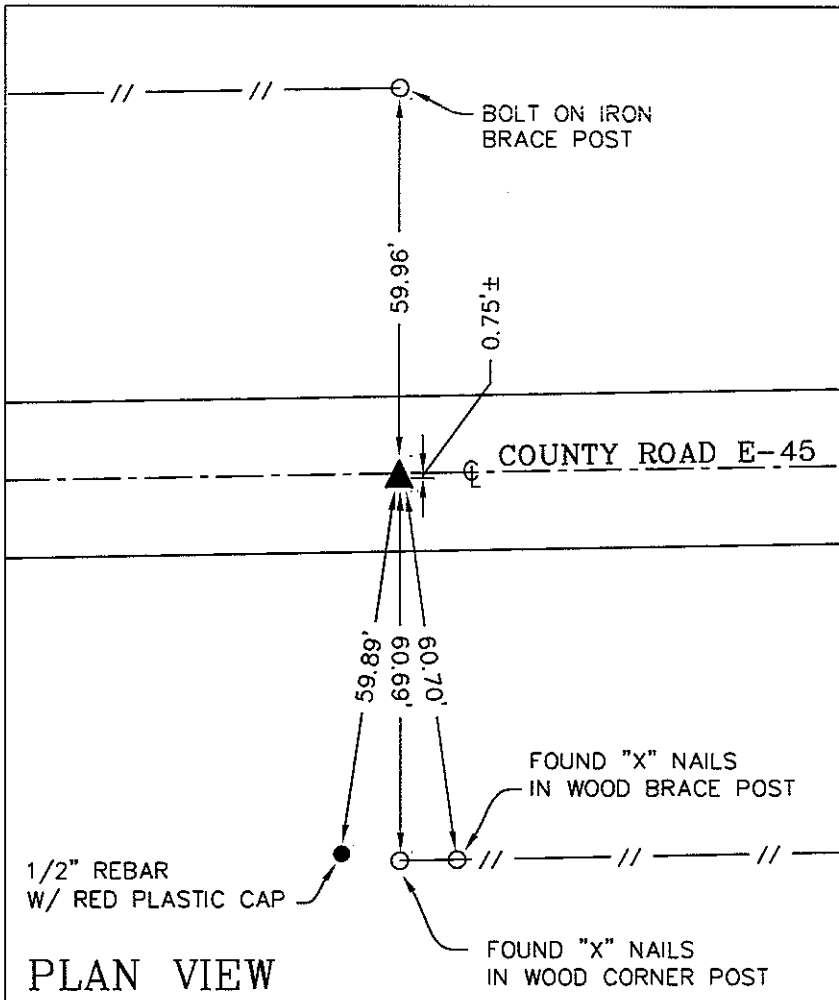
NARRATIVE:

THIS CERTIFICATE IS BEING PREPARED BECAUSE SOME OF THE PREVIOUS CORNER CERTIFICATION TIES HAVE BEEN REMOVED.

NEW REFERENCE TIES HAVE BEEN ESTABLISHED/FOUND FOR THE SOUTHWEST CORNER OF SECTION 4, TOWNSHIP 83 NORTH, RANGE 4 WEST OF THE 5TH PRINCIPAL MERIDIAN, JONES COUNTY, IOWA.

THE MONUMENT FOUND FOR THE SOUTHWEST CORNER OF SECTION 4, TOWNSHIP 83 NORTH, RANGE 4 WEST IS A CUT "X" IN P.C.C. PAVEMENT. IT IS LOCATED APPROXIMATELY 0.75'± SOUTH OF THE CENTERLINE JOINT FOR COUNTY ROAD E-45.

NEW REFERENCE TIES HAVE BEEN ESTABLISHED/FOUND AS SHOWN ON THE PLAN VIEW OF THIS DOCUMENT.



PLAN VIEW

I hereby certify that this land surveying document was prepared and the related survey work was performed by me or under my direct personal supervision and that I am a duly licensed Land Surveyor under the laws of the State of Iowa.

Signed: *Ryan R. Remling* Date: 3/17/10

RYAN R. REMLING, L.S. 18769
My license renewal date is December 31, 2011

Pages or sheets covered by this seal: THIS SHEET ONLY



CAD File: I:\projects\9400\9423\dwg\9423-V01-C3D08.dwg Date Plotted: Mar 17, 2010 - 10:30am Plotted By: RYAN-REMLING

PREPARED BY HALL & HALL ENGINEERS, INC. 209 29TH STREET N.E. CEDAR RAPIDS, IOWA 52402 (319) 362-9548

SECTION CORNER CERTIFICATE

OF

LAND SURVEY MONUMENTS SITUATED IN SECTION 5, TOWNSHIP 03 NORTH, RANGE 4 WEST, OF THE FIFTH PRINCIPAL MERIDIAN, JONES, COUNTY, IOWA.

PREVIOUSLY RECORDED IN BOOK AT PAGE

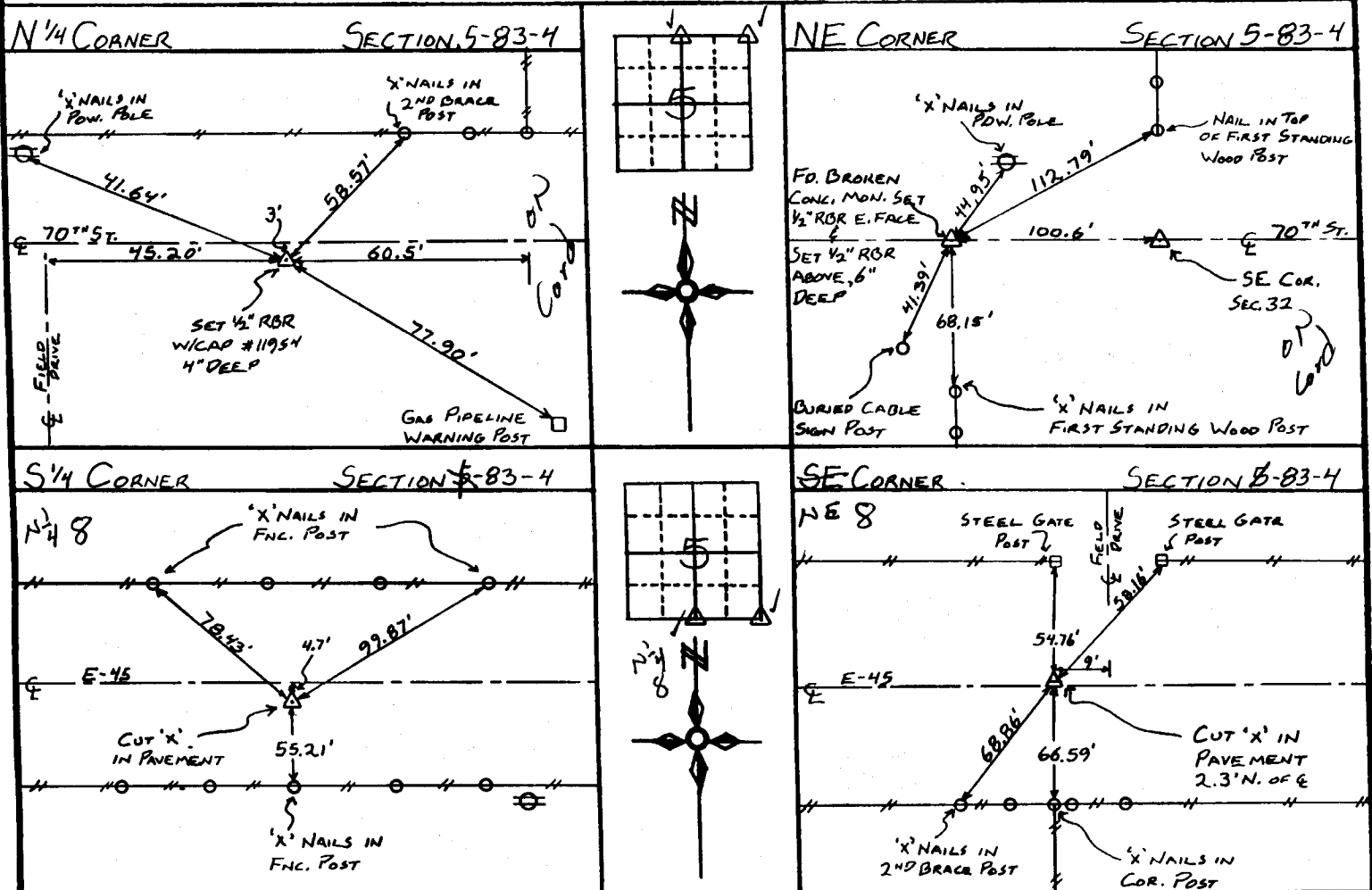
REASON FOR PREPARING CERTIFICATE:

- A) THERE IS NO CERTIFICATE FOR THE CORNER ON FILE WITH THE RECORDER OF THE COUNTY IN WHICH THE CORNER IS LOCATED.
- B) CORNER POSITION DIFFERS FROM THAT SHOWN IN THE PUBLIC RECORDS OF THE COUNTY IN WHICH THE CORNER IS LOCATED.
- C) THE CORNER MONUMENT HAS BEEN REPLACED OR MODIFIED
- D) THE REFERENCE TIES REFERRED TO IN AN EXISTING PUBLIC RECORD ARE INCORRECT

MONUMENT DESCRIPTION AND REMARKS:

- N¹/₄ COR. SEC. 5-83-4: SET 1/2" REBAR W/ CAP #11954 4" DEEP, 3' SOUTH OF E 70TH ST.
- NE COR. SEC. 5-83-4: FOUND BROKEN CONG. MONUMENT SET 1/2" REBAR AT EAST FACE & 1/2" REBAR ABOVE 6" DEEP
- S¹/₄ COR. SEC. 5-83-4: CUT 'X' IN PAVEMENT 4.7' SOUTH OF E E-45
- SE COR. SEC. 5-83-4: CUT 'X' IN PAVEMENT 2.3' NORTH OF E E-45

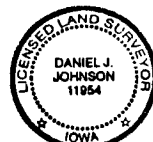
RECOVERY TIE DRAWING



I, DANIEL J. JOHNSON, - CERTIFY THAT THE CORNER LOCATION(S) SHOWN ON THIS RECORD WERE DETERMINED BY ME OR UNDER MY DIRECTION AND CONTROL AND THAT THIS U S PUBLIC LAND SURVEY MONUMENT RECORD IS CORRECT AND COMPLETE TO THE BEST OF MY KNOWLEDGE AND BELIEF.

Daniel J. Johnson 10-27-97
 DANIEL J. JOHNSON L.S. NO. 11954 DATE

Greenfield



83405e-102797
 83405e-102797
 83408e-102797 83408e-102797

MY LICENSE RENEWAL DATE IS DECEMBER 31, 1998

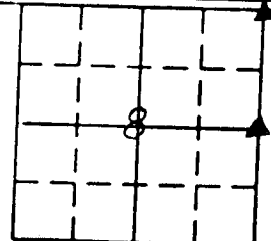
LEGEND: Δ GOVERNMENT CORNER ● PROPERTY CORNER FOUND ○ 1/2" X 3/4" W/ L.S. CAP SET --- EXISTING FENCE LINE ——— PROPERTY LINE	SHEET TITLE: U.S. PUBLIC LAND SURVEY RECORD PROJECT TITLE: ARMSTRONG - BOUNDARY	HALL AND HALL ENGINEERS, INC. 209 29TH STREET N.E. CEDAR RAPIDS, IOWA 52402 (319) 362-9548
	SCALE: 1" = 40' DATE: 11-10-97 DRAWN BY: JLR CHECKED BY: JLR APPR: JLR DATE: 01-10-98	

**UNITED STATES PUBLIC LAND
SURVEY CORNER CERTIFICATE**

LAND SURVEY MONUMENTS SITUATED IN SECTION 8, TOWNSHIP 83N,
RANGE 4W, OF THE 5th. PRINCIPAL MERIDIAN, JONES
COUNTY, IOWA.

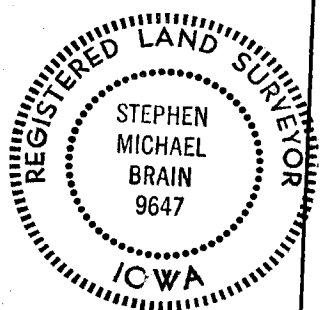
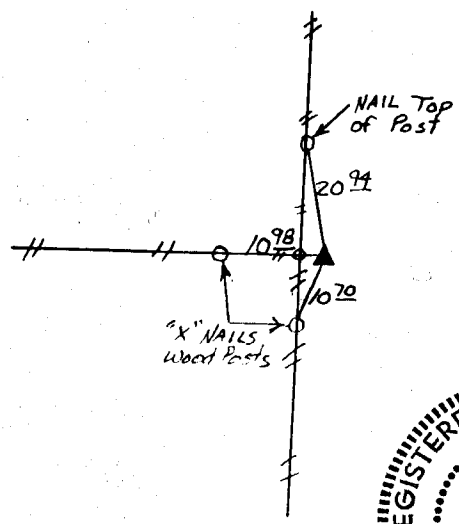
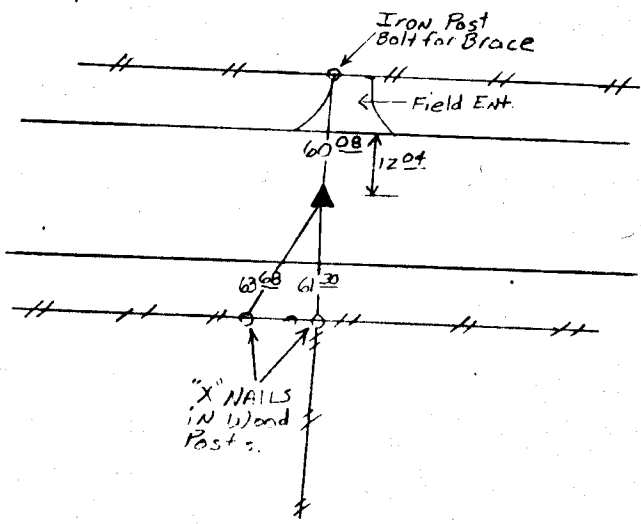
N NO SCALE

RECOVERY TIE DRAWING



NE COR.

E 1/4 COR.



ON CARD 2-6-92

2-6-92

PREVIOUSLY RECORDED IN BOOK _____ PAGE _____

PREVIOUSLY RECORDED IN BOOK _____ PAGE _____

MONUMENT DESCRIPTION AND HOW ESTABLISHED: _____

MONUMENT DESCRIPTION AND HOW ESTABLISHED: _____

Found "X" chiseled

Found conc. mon. 4" above ground

I HEREBY DECLARE THAT THE SURVEY WORK WAS COMPLETED AND THIS CERTIFICATE WAS PREPARED BY ME OR UNDER MY DIRECT PERSONAL SUPERVISION AND THAT I AM A DULY REGISTERED LAND SURVEYOR UNDER THE LAWS OF THE STATE OF IOWA.

Stephen Michael Brain 1-14-92
STEPHEN MICHAEL BRAIN, P.E. & L.S. 9647

List Corners to be Indexed

Corners	Section	Twp	Range
SE	5	83	4W
SW	4	83	4W
NW	9	83	4W
W 1/4	9	83	4W

83408e-011492
834080-011492

RAMENT ENGINEERING, INC.
HIAWATHA, IOWA