

1999 3204

FILED  
RECORDERS OFFICE  
JONES COUNTY IOWA

99 SEP -8 AM 10: 37

MARIE KRUTZFIELD  
RECORDER 6.00 P<sub>2</sub>

PREPARED BY HALL & HALL ENGINEERS, INC. 209 29TH STREET N.E. CEDAR RAPIDS, IOWA 52402 (319) 362-9548

SECTION CORNER CERTIFICATE  
OF

LAND SURVEY MONUMENTS SITUATED IN SECTION 10, TOWNSHIP 83 NORTH,  
RANGE 2 WEST, OF THE FIFTH PRINCIPAL MERIDIAN, JONES COUNTY, IOWA.

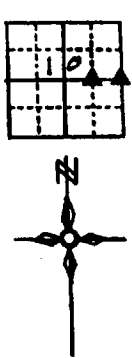
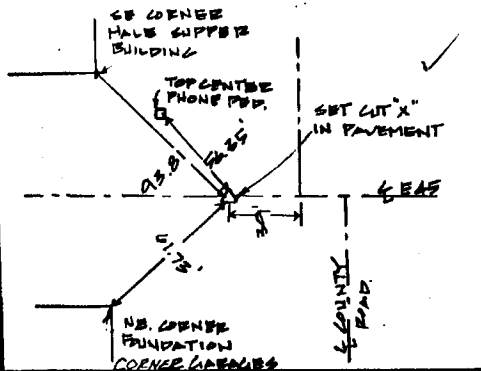
PREVIOUSLY RECORDED IN BOOK \_\_\_\_\_ AT PAGE \_\_\_\_\_

MONUMENT DESCRIPTION AND REMARKS:

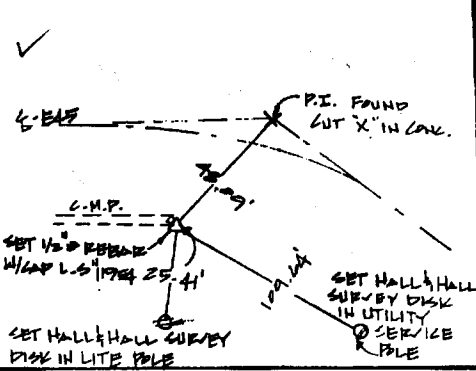
SW CORNER S.W. 1/4 - N.E. 1/4 SET CUT "X" @ CENTERLINE OF E-45  
E 1/4 CORNER, SET 1/2" REBAR W/ CAP L.S. # 11954 @ END OF C.M.P.  
N.E. CORNER, FOUND BOLT AT TOP OF CONCRETE CORNER POST.  
N 1/4 CORNER, SET 1/2" REBAR W/ CAP L.S. # 11954 @ NORTH SIDE OF EAST WEST FENCE

RECOVERY TIE DRAWING

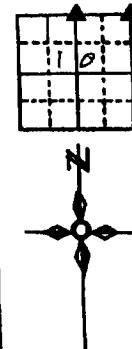
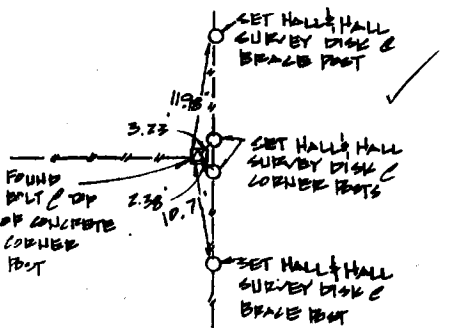
SW CORNER S.W. 1/4 NE 1/4 10-83-2



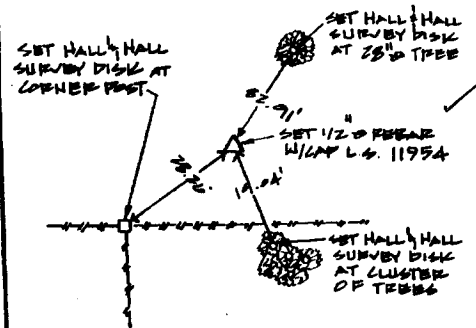
E 1/4 CORNER 10-83-2



N.E. CORNER 10-83-2



N 1/4 CORNER 10-83-2

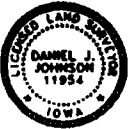


I hereby certify that this land surveying document was prepared and the related survey work was performed by me or under my direct personal supervision and that I am a duly licensed Land Surveyor under the laws of the State of Iowa.

Signature: *[Signature]* Date: 9-8-99

Daniel J. Johnson, L.S. 11954  
My license renewed thru to December 31, 2000

Pages or sheets covered by this post:  
(Enter submission unless specified here)



- REASON FOR PREPARING CERTIFICATE:
- A) THERE IS NO CERTIFICATE FOR THE CORNER ON FILE WITH THE RECORDER OF THE COUNTY IN WHICH THE CORNER IS LOCATED
  - B) CORNER POSITION DIFFERS FROM THAT SHOWN IN THE PUBLIC RECORDS OF THE COUNTY IN WHICH THE CORNER IS LOCATED
  - C) THE CORNER MONUMENT HAS BEEN REPLACED OR MODIFIED
  - D) THE REFERENCE TIES REFERRED TO IN AN EXISTING PUBLIC RECORD ARE INCORRECT

SECTION CORNER  
PROPERTY CORNER FOUND  
1/2" 130" W/ L.S. CAP SET  
EXISTING FENCE LINE  
PROPERTY LINE

US PUBLIC LAND SURVEY RECORD  
PROJECT TITLE: MARKMAN  
SCALE: N.T.S.  
DATE: 8/17/98

HALL AND HALL ENGINEERS, INC.  
209 29TH STREET NE  
CEDAR RAPIDS, IOWA 52402  
(319) 362-9548  
DATE: 11/2/99  
BY: LAZB

98 99 1614

FILED  
RECORDERS OFFICE  
JONES COUNTY IOWA

98 NOV -5 AM 9:39

MARIE KRUTZFIELD 6.00 Pd

RECORDED

PREPARED BY HALL & HALL ENGINEERS, INC. 209 28TH STREET N.E. CEDAR RAPIDS, IOWA 52402 (319) 362-9548

SECTION CORNER CERTIFICATE  
OF

LAND SURVEY MONUMENTS SITUATED IN SECTION 10, TOWNSHIP 83 NORTH,  
RANGE 2 WEST, OF THE FIFTH PRINCIPAL MERIDIAN, JONES COUNTY, IOWA.

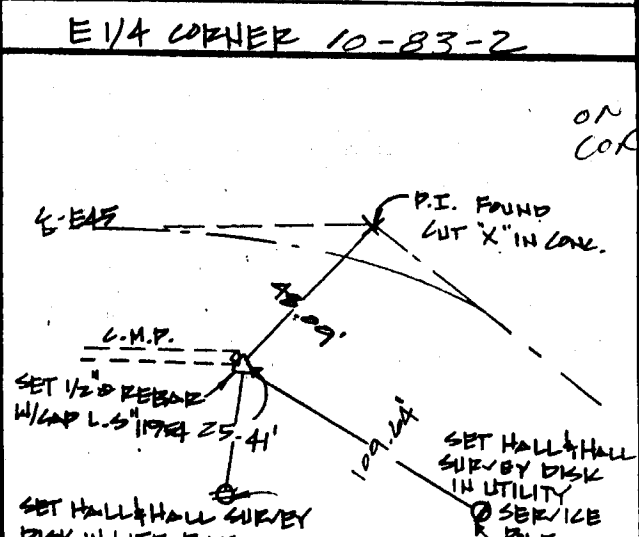
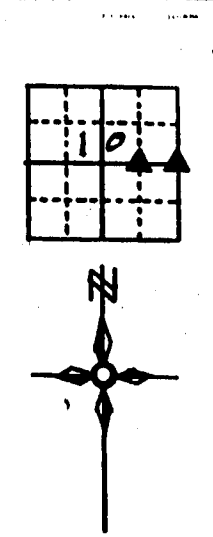
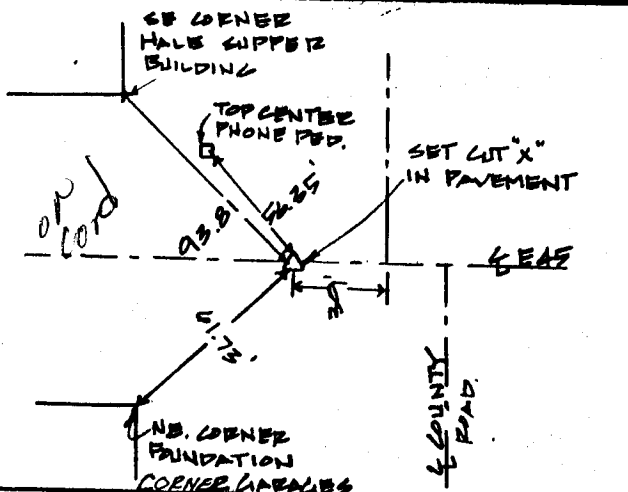
PREVIOUSLY RECORDED IN BOOK \_\_\_\_\_ AT PAGE \_\_\_\_\_

MONUMENT DESCRIPTION AND REMARKS:

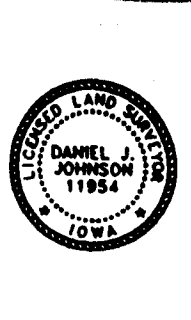
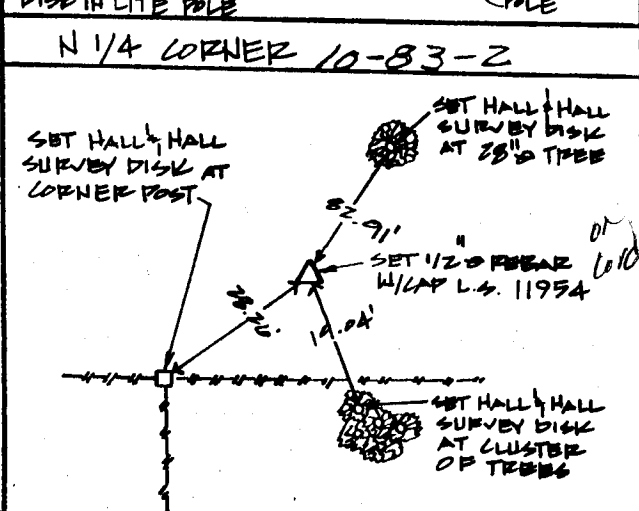
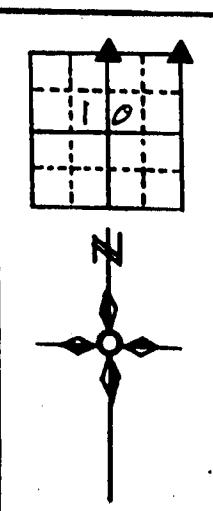
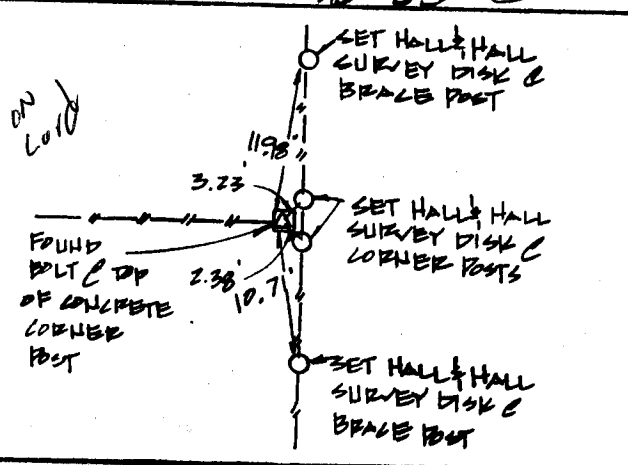
SW CORNER S.E. 1/4 - N.E. 1/4 SET CUT "X" @ CENTERLINE OF E-45  
E 1/4 CORNER, SET 1/2" REBAR W/CAP L.S. #11954 @ END OF C.M.P.  
N.E. CORNER, FOUND BOLT AT TOP OF CONCRETE CORNER POST.  
N 1/4 CORNER, SET 1/2" REBAR W/CAP L.S. #11954 @ NORTH SIDE OF EAST WEST FENCE

RECOVERY TIE DRAWING

SW CORNER S.E. 1/4 N.E. 1/4 10-83-2



N.E. CORNER 10-83-2



I hereby certify that this land surveying document was prepared and the related survey work was performed by me or under my direct personal supervision and that I am a duly licensed Land Surveyor under the laws of the State of Iowa.  
Signed: Daniel J. Johnson Date: 11-4-98  
Daniel J. Johnson, L.S. 11954  
My license renewal date is December 31, 1999  
Pages or sheets covered by this seal:  
(Entire submission unless specified here)

- REASON FOR PREPARING CERTIFICATE:
- A) THERE IS NO CERTIFICATE FOR THE CORNER ON FILE WITH THE RECORDER OF THE COUNTY IN WHICH THE CORNER IS LOCATED
  - B) CORNER POSITION DIFFERS FROM THAT SHOWN IN THE PUBLIC RECORDS OF THE COUNTY IN WHICH THE CORNER IS LOCATED.
  - C) THE CORNER MONUMENT HAS BEEN REPLACED OR MODIFIED
  - D) THE REFERENCE TIES REFERRED TO IN AN EXISTING PUBLIC RECORD ARE INCORRECT

SHEET NO. 10	US PUBLIC LAND SURVEY RECORD	HALL AND HALL ENGINEERS, INC. 209 28TH STREET N.E. CEDAR RAPIDS, IOWA 52402 (319) 362-9548
	PROJECT NO. MARKMAN	
DATE 8/17/98	SCALE N.T.S.	NO. 116/6149
BY T.M.R.	DJJ	NO. 6428

# SECTION CORNER CERTIFICATE

OF  
 LAND SURVEY MONUMENTS SITUATED IN SECTION 10, TOWNSHIP 83 NORTH,  
 RANGE 2 WEST, OF THE FIFTH PRINCIPAL MERIDIAN, JONES, COUNTY, IOWA.

PREVIOUSLY RECORDED IN BOOK \_\_\_\_\_ AT PAGE \_\_\_\_\_

FOR RECORDER'S USE

**REASON FOR PREPARING CERTIFICATE:**

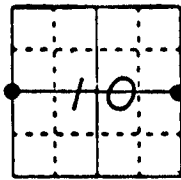
- A) THERE IS NO CERTIFICATE FOR THE CORNER ON FILE WITH THE RECORDER OF THE COUNTY IN WHICH THE CORNER IS LOCATED.
- B) CORNER POSITION DIFFERS FROM THAT SHOWN IN THE PUBLIC RECORDS OF THE COUNTY IN WHICH THE CORNER IS LOCATED.
- C) THE CORNER MONUMENT HAS BEEN REPLACED OR MODIFIED.
- D) THE REFERENCE TIES REFERRED TO IN AN EXISTING PUBLIC RECORD ARE INCORRECT.

**MONUMENT DESCRIPTION AND REMARKS:**

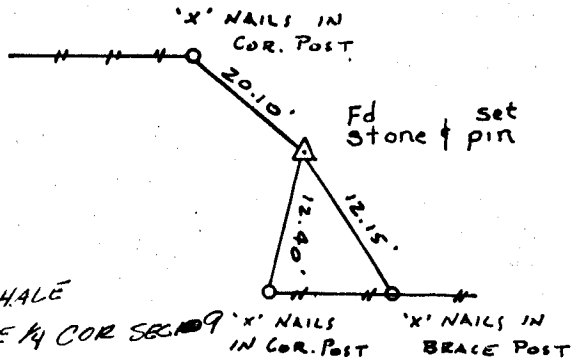
W 1/4 CORNER SECTION 10-83-2 FOUND SANDSTONE 2" DEEP SET 1/2" 6 PIN WITH U.S. CAP # 8165 ON SOUTH EDGE OF STONE 4" DEEP  
 E 1/4 CORNER SECTION 10-83-2 FOUND CUT 'X' IN PAVEMENT = P.I.  
 Pin under pavement, used ties Jones Co. Engr.

## RECOVERY TIE DRAWING

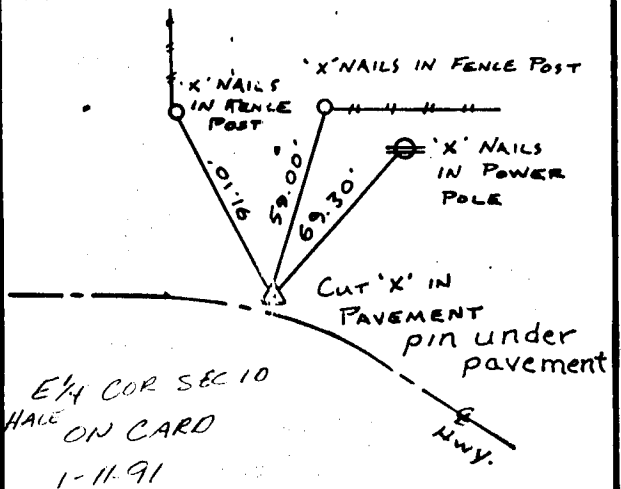
W 1/4 COR. SEC. 10-83-2



E 1/4 COR. SEC. 10-83-2



NOT TO SCALE



I, GLEN D. MEISNER, CERTIFY THAT THE CORNER LOCATION(S) SHOWN ON THIS RECORD WERE DETERMINED BY ME OR UNDER MY DIRECTION AND CONTROL AND THAT THIS U.S. PUBLIC LAND SURVEY MONUMENT RECORD IS CORRECT AND COMPLETE TO THE BEST OF MY KNOWLEDGE AND BELIEF.

Glen D. Meisner 1-3-91  
 GLEN D. MEISNER L.S. NO 8165 DATE



DRAWN	<input checked="" type="checkbox"/> GOVERNMENT CORNER <input checked="" type="checkbox"/> 1/4" 6 PIN SET <input type="checkbox"/> CONVEYANCE	<input type="checkbox"/> DISTRICT	<b>U.S. PUBLIC LAND SURVEY RECORD</b>	FILED	<b>HALL AND HALL ENGINEERS, INC.</b> 226 20TH STREET DRIVE S.E. CEDAR RAPIDS, IOWA 52403 319-362-9548
	<input type="checkbox"/> EXISTING FORCE LINE <input type="checkbox"/> R.R. LINE	<input type="checkbox"/> PROJECT	SCALE NONE		PAGE 439B
	DRAWN BY R.W.B.	CHECKED BY GDM	DATE 12-5-90		