

1999 3204

FILED
RECORDERS OFFICE
JONES COUNTY IOWA

99 SEP -8 AM 10: 37

MARIE KRUTZFIELD
RECORDER 6.00 P_d

PREPARED BY HALL & HALL ENGINEERS, INC. 209 29TH STREET N.E. CEDAR RAPIDS, IOWA 52402 (319) 362-9548

SECTION CORNER CERTIFICATE
OF

LAND SURVEY MONUMENTS SITUATED IN SECTION 10, TOWNSHIP 83 NORTH,
RANGE 2 WEST, OF THE FIFTH PRINCIPAL MERIDIAN, JONES COUNTY, IOWA.

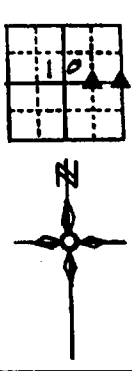
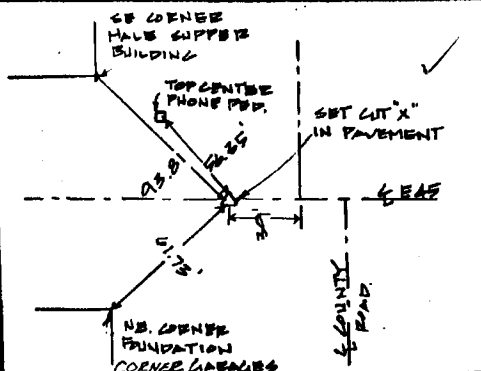
PREVIOUSLY RECORDED IN BOOK _____ AT PAGE _____

MONUMENT DESCRIPTION AND REMARKS:

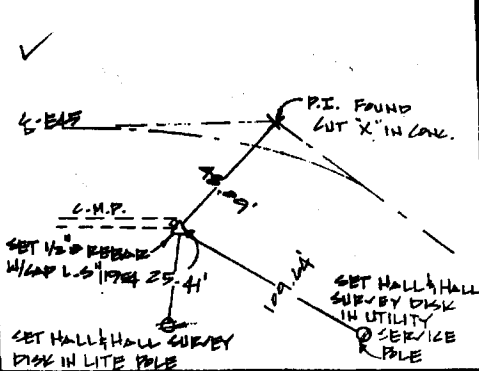
SW CORNER S.W. 1/4 - N.E. 1/4 SET CUT "X" @ CENTERLINE OF E-45
E 1/4 CORNER, SET 1/2" REBAR W/ CAP L.S. # 11954 @ END OF C.M.P.
N.E. CORNER, FOUND BOLT AT TOP OF CONCRETE CORNER POST.
N 1/4 CORNER, SET 1/2" REBAR W/ CAP L.S. # 11954 @ NORTH SIDE OF EAST WEST FENCE

RECOVERY TIE DRAWING

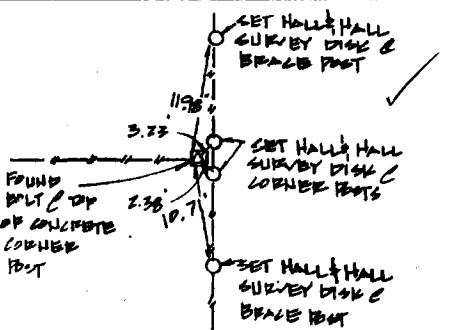
SW CORNER S.W. 1/4 NE 1/4 10-83-2



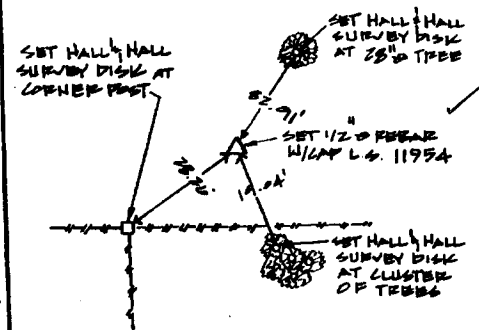
E 1/4 CORNER 10-83-2



N.E. CORNER 10-83-2



N 1/4 CORNER 10-83-2



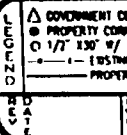
I hereby certify that this land surveying document was prepared and the related survey work was performed by me or under my direct personal supervision and that I am a duly licensed Land Surveyor under the laws of the State of Iowa.

Signature: *[Signature]* Date: 9-8-99

Daniel J. Johnson, L.S. 11954
My license renewed on 12 December 31, 2000

Pages or sheets covered by this post:
(Enter submission unless specified here)

- REASON FOR PREPARING CERTIFICATE:
- A) THERE IS NO CERTIFICATE FOR THE CORNER ON FILE WITH THE RECORDER OF THE COUNTY IN WHICH THE CORNER IS LOCATED
 - B) CORNER POSITION DIFFERS FROM THAT SHOWN IN THE PUBLIC RECORDS OF THE COUNTY IN WHICH THE CORNER IS LOCATED
 - C) THE CORNER MONUMENT HAS BEEN REPLACED OR MODIFIED
 - D) THE REFERENCE TIES REFERRED TO IN AN EXISTING PUBLIC RECORD ARE INCORRECT



US PUBLIC LAND SURVEY RECORD
PROJECT: MARKMAN
DATE: 8/17/98
SCALE: N.T.S.

HALL AND HALL ENGINEERS, INC.
209 29TH STREET NE
CEDAR RAPIDS, IOWA 52402
(319) 362-9548
DATE: 11/2/99
BY: LAZB

98 99 1614

FILED
RECORDERS OFFICE
JONES COUNTY IOWA

98 NOV -5 AM 9:39

MARIE KRUTZFIELD 6.00 Pd

RECORDED

PREPARED BY HALL & HALL ENGINEERS, INC. 209 28TH STREET N.E. CEDAR RAPIDS, IOWA 52402 (319) 362-9548

SECTION CORNER CERTIFICATE
OF

LAND SURVEY MONUMENTS SITUATED IN SECTION 10, TOWNSHIP 23 NORTH,
RANGE 2 WEST, OF THE FIFTH PRINCIPAL MERIDIAN, JONES COUNTY, IOWA.

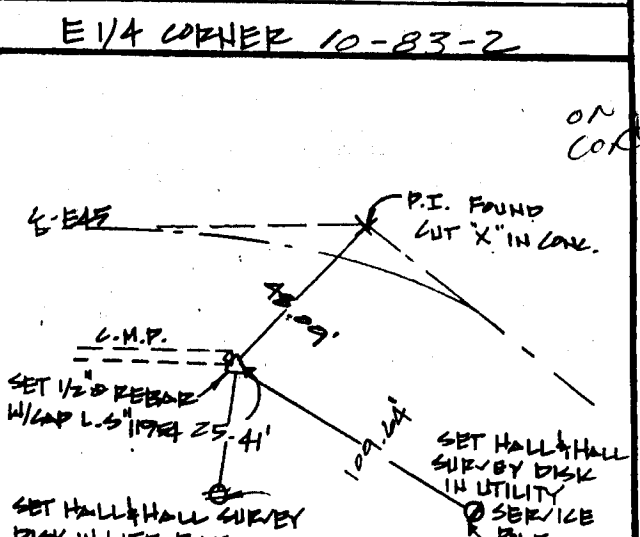
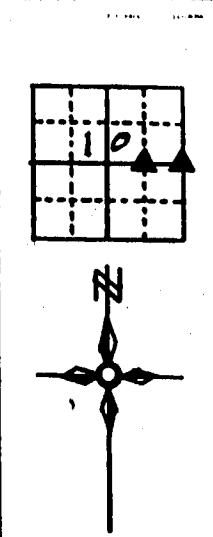
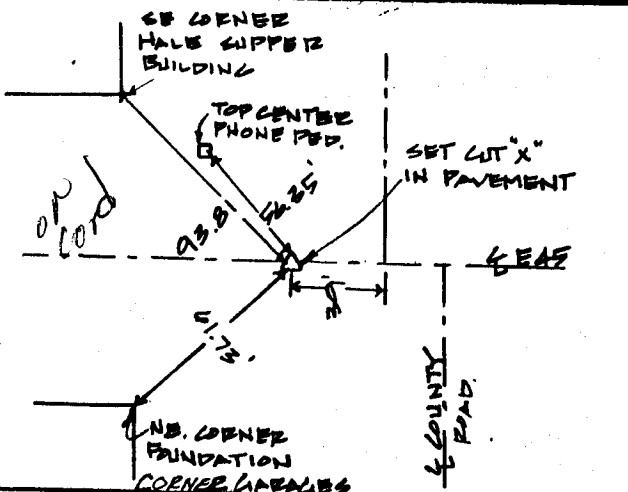
PREVIOUSLY RECORDED IN BOOK _____ AT PAGE _____

MONUMENT DESCRIPTION AND REMARKS:

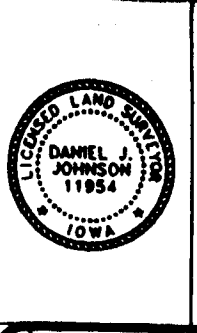
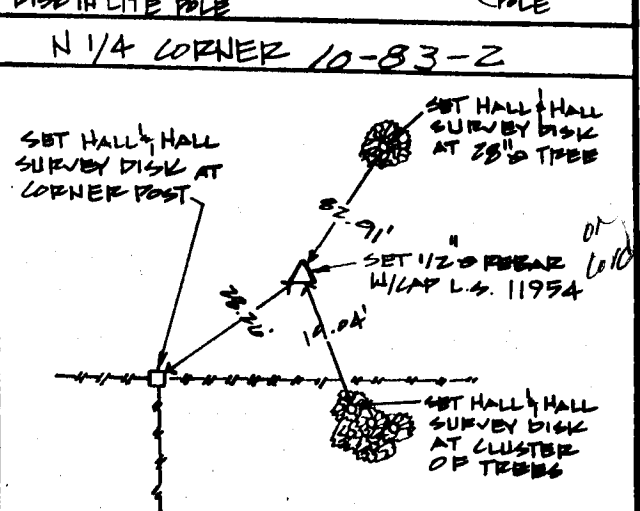
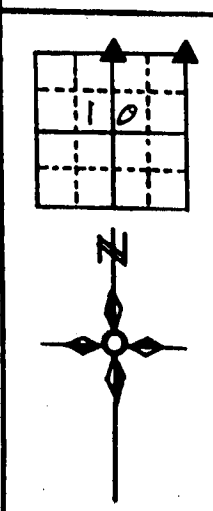
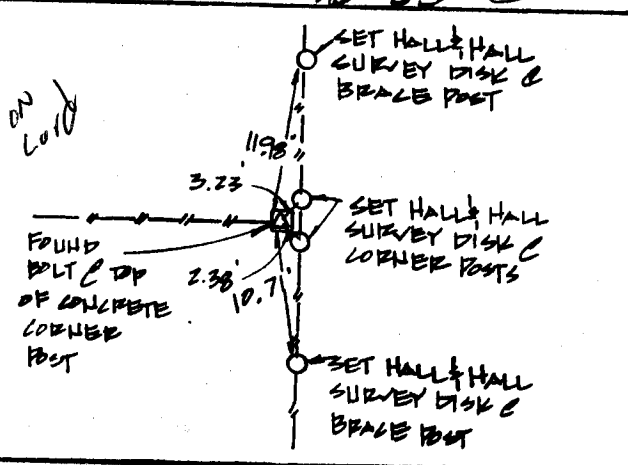
SW CORNER S.E. 1/4 - N.E. 1/4 SET CUT "X" @ CENTERLINE OF E-45
E 1/4 CORNER, SET 1/2" REBAR W/CAP L.S. #11954 @ END OF C.M.P.
N.E. CORNER, FOUND BOLT AT TOP OF CONCRETE CORNER POST.
N 1/4 CORNER, SET 1/2" REBAR W/CAP L.S. #11954 @ NORTH SIDE OF EAST WEST FENCE

RECOVERY TIE DRAWING

SW CORNER S.E. 1/4 N.E. 1/4 10-83-2



N.E. CORNER 10-83-2



I hereby certify that this land surveying document was prepared and the related survey work was performed by me or under my direct personal supervision and that I am a duly licensed Land Surveyor under the laws of the State of Iowa.
Signed: Daniel J. Johnson Date: 11-4-98
Daniel J. Johnson, L.S. 11954
My license renewal date is December 31, 1999
Pages or sheets covered by this seal:
(Entire submission unless specified here)

- REASON FOR PREPARING CERTIFICATE:
- A) THERE IS NO CERTIFICATE FOR THE CORNER ON FILE WITH THE RECORDER OF THE COUNTY IN WHICH THE CORNER IS LOCATED
 - B) CORNER POSITION DIFFERS FROM THAT SHOWN IN THE PUBLIC RECORDS OF THE COUNTY IN WHICH THE CORNER IS LOCATED.
 - C) THE CORNER MONUMENT HAS BEEN REPLACED OR MODIFIED
 - D) THE REFERENCE TIES REFERRED TO IN AN EXISTING PUBLIC RECORD ARE INCORRECT

SHEET NO. 10	US PUBLIC LAND SURVEY RECORD	HALL AND HALL ENGINEERS, INC. 209 28TH STREET N.E. CEDAR RAPIDS, IOWA 52402 (319) 362-9548
	PROJECT NO. MARKMAN	
DATE 8/17/98	SCALE N.T.S.	NO. 116/6149
BY T.M.R.	DJJ	NO. 6428