

1999 3203
 FILED
 RECORDERS OFFICE
 JONES COUNTY IOWA

99 SEP -8 AM 10:36

MARIE KRUTZFIELD
 RECORDER 6.00 Pd

PREPARED BY HALL & HALL ENGINEERS, INC. 209 29TH STREET N.E. CEDAR RAPIDS, IOWA 52402 (319) 382-9548

SECTION CORNER CERTIFICATE

OF
 LAND SURVEY MONUMENTS SITUATED IN SECTION 10, TOWNSHIP 83 NORTH,
 RANGE 2 WEST, OF THE FIFTH PRINCIPAL MERIDIAN, JONES COUNTY, IOWA.

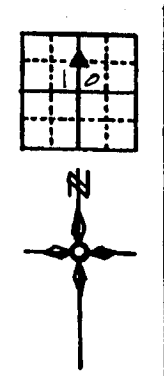
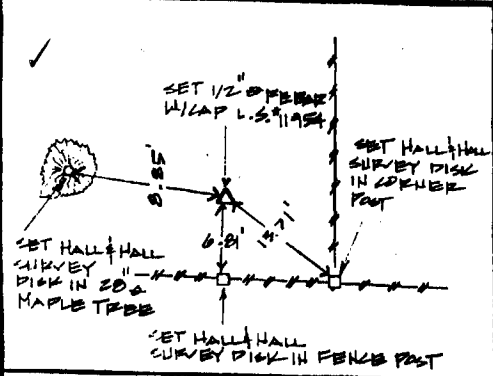
PREVIOUSLY RECORDED IN BOOK _____ AT PAGE _____

MONUMENT DESCRIPTION AND REMARKS:

S.W. CORNER, N.W. 1/4 - N.E. 1/4 SET 1/2" Ø BRASS W/ CAP L.S.# 11754, WEST OF FENCE
 RUNNING NORTH AND NORTH OF FENCE RUNNING EAST AND WEST

RECOVERY TIE DRAWING

SW CORNER NW 1/4 NE 1/4 10-83-2



I hereby certify that this land surveying document was prepared and the related survey work was performed by me or under my direct personal supervision and that I am a duly Licensed Land Surveyor under the laws of the State of Iowa.

Signed: Daniel J. Johnson Date: 9-8-99
 Daniel J. Johnson, L.S. 11954
 My license renewal date is December 31, 2000

Pages or sheets covered by this book:
 (Enter submission unless specified here)

REASON FOR PREPARING CERTIFICATE

- A) THERE IS NO CERTIFICATE FOR THE CORNER ON FILE WITH THE RECORDER OF THE COUNTY IN WHICH THE CORNER IS LOCATED
- B) CORNER POSITION DIFFERS FROM THAT SHOWN IN THE PUBLIC RECORDS OF THE COUNTY IN WHICH THE CORNER IS LOCATED.
- C) THE CORNER MONUMENT HAS BEEN REPLACED OR MODIFIED
- D) THE REFERENCE TIES REFERRED TO IN AN EXISTING PUBLIC RECORD ARE INCORRECT



LEGEND
 Δ GOVERNMENT CORNER
 ○ PROPERTY CORNER FOUND
 ○ 1/2" Ø 30' W/ L.S. CAP SET
 --- EXISTING FENCE LINE
 - - - PROPERTY LINE

SHEET NO. 10 PUBLIC LAND SURVEY RECORD
 PROJECT FILE MARKMAN

HALL AND HALL ENGINEERS, INC.
 209 29TH STREET N.E.
 CEDAR RAPIDS, IOWA 52402
 (319) 382-9548

DATE 9/10/98 SCALE N.T.S. SHEET NO. 116 OF 12 CASE NO. 6428

98 NOV -5 AM 9:40

MARIE KRUTZFIELD
 RECORDER 6.00 Pd.

PREPARED BY HALL & HALL ENGINEERS, INC. 209 29TH STREET N.E. CEDAR RAPIDS, IOWA 52402 (319) 362-9548
 SECTION CORNER CERTIFICATE

OF
 LAND SURVEY MONUMENTS SITUATED IN SECTION 10, TOWNSHIP 83 NORTH,
 RANGE 2 WEST, OF THE FIFTH PRINCIPAL MERIDIAN, JONES COUNTY, IOWA.

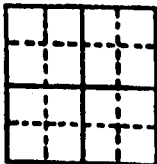
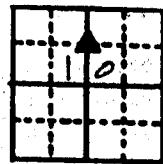
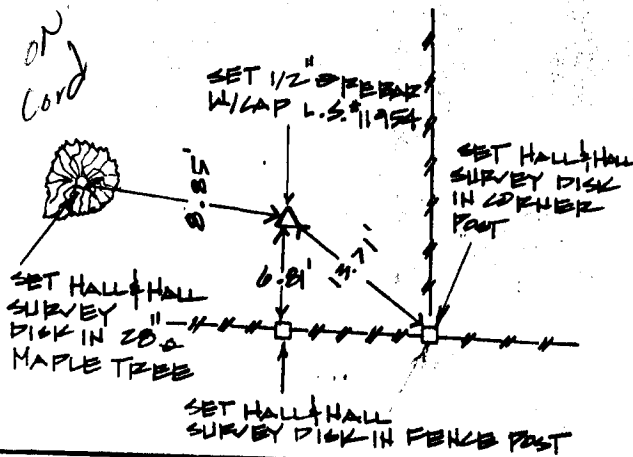
PREVIOUSLY RECORDED IN BOOK _____ AT PAGE _____

MONUMENT DESCRIPTION AND REMARKS:

S.W. CORNER, N.W. 1/4 - N.E. 1/4 SET 1/2" Ø REBAR W/ CAP L.S.# 11754, WEST OF FENCE
 RUNNING NORTH AND NORTH OF FENCE RUNNING EAST AND WEST

RECOVERY TIE DRAWING

SW CORNER NW 1/4 - NE 1/4 10-83-2



I hereby certify that this land surveying document was prepared and the related survey work was performed by me or under my direct personal supervision and that I am a duly licensed Land Surveyor under the laws of the State of Iowa.

Signed: Daniel J. Johnson Date: 11-4-98
 Daniel J. Johnson, L.S. 11954
 My license renewed date to December 31, 1998

Pages or sheets covered by this seal:
 (Entire submission unless specified here)

REASON FOR PREPARING CERTIFICATE:

- A) THERE IS NO CERTIFICATE FOR THE CORNER ON FILE WITH THE RECORDER OF THE COUNTY IN WHICH THE CORNER IS LOCATED
- B) CORNER POSITION DIFFERS FROM THAT SHOWN IN THE PUBLIC RECORDS OF THE COUNTY IN WHICH THE CORNER IS LOCATED
- C) THE CORNER MONUMENT HAS BEEN REPLACED OR MODIFIED
- D) THE REFERENCE TIES REFERRED TO IN AN EXISTING PUBLIC RECORD ARE INCORRECT

△ GOVERNMENT CORNER
 ○ PROPERTY CORNER FOUND
 ○ 1/2" Ø 30" W/ L.S. CAP SET
 - - - EXISTING FENCE LINE
 ——— PROPERTY LINE

SET: **US PUBLIC LAND SURVEY RECORD**
 PROJECT: **MARKMAN**



HALL AND HALL ENGINEERS, INC.
 209 29TH STREET N.E.
 CEDAR RAPIDS, IOWA 52402
 (319) 362-9548

NOV T.M.R. DEC P.J.L. APR P.J.L. DATE 8/18/98 SCALE N.T.S.

NO 116 PNO 6428