

1999 3205  
 FILED  
 RECORDERS OFFICE  
 JONES COUNTY IOWA

99 SEP -8 AM 10: 38

MARIE KRUTZFIELD  
 RECORDER 6.00 R

PREPARED BY HALL & HALL ENGINEERS, INC. 209 20TH STREET N.E. CEDAR RAPIDS, IOWA 52402 (319) 362-9548  
 SECTION CORNER CERTIFICATE

OF  
 LAND SURVEY MONUMENTS SITUATED IN SECTION 9, TOWNSHIP 83 NORTH,  
 RANGE 2 WEST, OF THE FIFTH PRINCIPAL MERIDIAN, JONE S, COUNTY, IOWA.

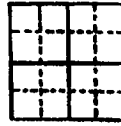
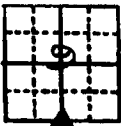
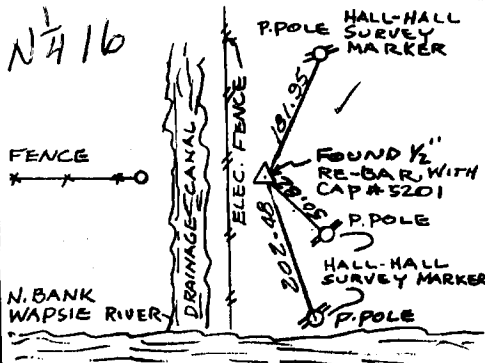
PREVIOUSLY RECORDED IN BOOK \_\_\_\_\_ AT PAGE \_\_\_\_\_

MONUMENT DESCRIPTION AND REMARKS:

S 1/4 COR. FOUND 1/2" RE-BAR, WITH CAP #5201.

RECOVERY TIE DRAWING

S 1/4 COR. 9-83-2



I hereby certify that this land surveying document was prepared and the related survey work was performed by me or under my direct personal supervision and that I am a duly Licensed Land Surveyor under the laws of the State of Iowa.

Shown: Daniel J. Johnson Date: 9-8-99  
 Daniel J. Johnson, L.S. 11954  
 My license renewed due to December 31, 2000

Pages or sheets covered by this post:  
 (Entire submission unless specified here)

REASON FOR PREPARING CERTIFICATE:

- A) THERE IS NO CERTIFICATE FOR THE CORNER ON FILE WITH THE RECORDER OF THE COUNTY IN WHICH THE CORNER IS LOCATED
- B) CORNER POSITION DIFFERS FROM THAT SHOWN IN THE PUBLIC RECORDS OF THE COUNTY IN WHICH THE CORNER IS LOCATED.
- C) THE CORNER MONUMENT HAS BEEN REPLACED OR MODIFIED
- D) THE REFERENCE TIES REFERRED TO IN AN EXISTING PUBLIC RECORD ARE INCORRECT

GOVERNMENT CORNER PROPERTY CORNER (LOAD) 0 1/2" 130" W/ L.S. CAP SET --- EXISTING FENCE LINE --- PROPERTY LINE	SHEET FILE US PUBLIC LAND SURVEY RECORD CRUISE	HALL AND HALL ENGINEERS, INC. 209 20TH STREET N.E. CEDAR RAPIDS, IOWA 52402 (319) 362-9548
	DWG LEM 4-17-98 SCALE NONE	P.W. O.T. 49 P.W. 6461

98 99 1623  
FILED  
RECORDERS OFFICE  
JONES COUNTY IOWA

Hale

98 NOV -5 AM 9:49

MARIE KRUTZFIELD  
RECORDER 6.00 Pd.

PREPARED BY HALL & HALL ENGINEERS, INC. 209 29TH STREET N.E. CEDAR RAPIDS, IOWA 52402 (319) 382-9548

SECTION CORNER CERTIFICATE

OF  
LAND SURVEY MONUMENTS SITUATED IN SECTION 9, TOWNSHIP 83 NORTH,  
RANGE 2 WEST, OF THE FIFTH PRINCIPAL MERIDIAN, JONES COUNTY, IOWA.

PREVIOUSLY RECORDED IN BOOK \_\_\_\_\_ AT PAGE \_\_\_\_\_

MONUMENT DESCRIPTION AND REMARKS:

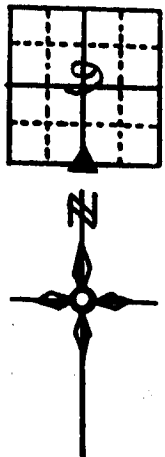
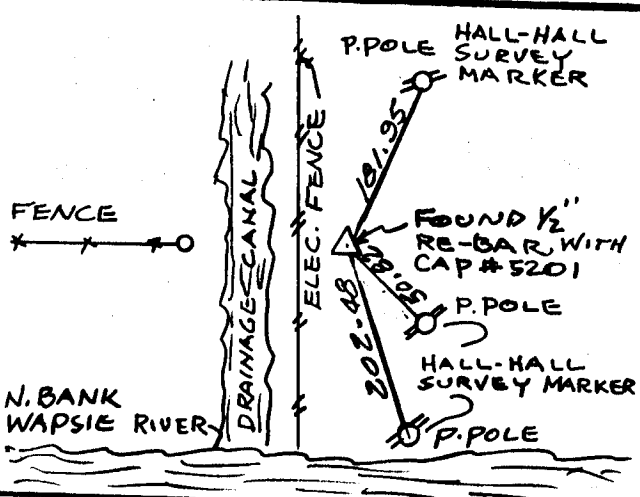
S 1/4 COR. FOUND 1/2" RE-BAR, WITH CAP #5201.

NH 10

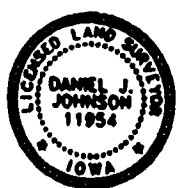
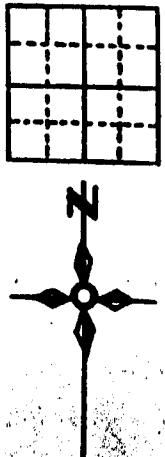
NH 16

RECOVERY TIE DRAWING

S 1/4 COR. 9-83-2



on cord  
NH 16



I hereby certify that this land surveying document was prepared and the related survey work was performed by me or under my direct personal supervision and that I am a duly Licensed Land Surveyor under the laws of the State of Iowa.

Signed: Daniel J. Johnson Date: 11-4-98  
Daniel J. Johnson, L.S. 11954  
My license renewal date is December 31, 1998

Pages or sheets covered by this cost:  
(Entire submission unless specified here)

- REASON FOR PREPARING CERTIFICATE:
- A) THERE IS NO CERTIFICATE FOR THE CORNER ON FILE WITH THE RECORDER OF THE COUNTY IN WHICH THE CORNER IS LOCATED.
  - B) CORNER POSITION DIFFERS FROM THAT SHOWN IN THE PUBLIC RECORDS OF THE COUNTY IN WHICH THE CORNER IS LOCATED.
  - C) THE CORNER MONUMENT HAS BEEN REPLACED OR MODIFIED.
  - D) THE REFERENCE TIES REFERRED TO IN AN EXISTING PUBLIC RECORD ARE INCORRECT.

ORIGINAL STATE	Δ GOVERNMENT CORNER ○ PROPERTY CORNER (LOAD) ○ 1/2" 130° W/ LS CAP SET - - - - - EXISTING FENCE LINE _____ PROPERTY LINE	SHEET NO. <u>US PUBLIC LAND SURVEY RECORD</u>
	DWS	PROJECT FILE: <u>CRUISE</u>
DATE <u>4-17-98</u>	SCALE <u>NONE</u>	NO. <u>0.T.49</u>

**H**  
**H**  
**E**

HALL AND HALL ENGINEERS, INC.  
209 29TH STREET N.E.  
CEDAR RAPIDS, IOWA 52402  
(319) 382-9548

NO. 6461