

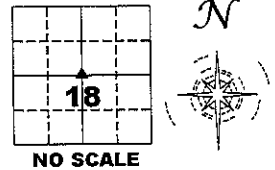
Jones County Marie Krutzfield Recorder
 Fee Book 2012 2202
 07/31/2012 @1115AM # Pages 2
 ZSC SEC COR CERT
 Total Fees: \$0.00

PREPARED BY
CLARENCE J. WALTON, JONES COUNTY ENGINEER'S OFFICE, 19501 HWY. 64, ANAMOSA, IOWA, 52205 (319) 462-3785

UNITED STATES PUBLIC LAND SURVEY CORNER CERTIFICATE

**LAND SURVEY MONUMENTS SITUATED IN SECTION 18, TOWNSHIP 83 NORTH,
RANGE 2 WEST OF THE 5TH PRINCIPAL MERIDIAN, JONES COUNTY, IOWA.**

CORNER	SECTION	TOWNSHIP	RANGE
CENTER	18	83N	2W



SURVEYOR'S NOTES

IN ADDITION TO THE NARRATIVE ON PAGE 2 OF 2, I WOULD LIKE TO ADD THE FOLLOWING NOTES:

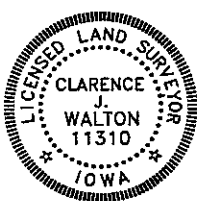
IT SEEMS TO ME THAT FLORY (BRUMMER) CROSSED OUT THE OPPOSITE QUARTER CORNERS TO DETERMINE THE CENTER OF SECTION. I DON'T BELIEVE THERE WAS ANY EVIDENCE AS TO THE CENTER HAVING BEEN FENCED OR MONUMENTED IN ANY OTHER WAY. FLORY HAD NO OTHER OPTIONS.

AS THE BEARINGS SHOW ON PAGE 2 OF 2, THERE ARE SMALL BENDS AT THE CENTER, BUT STILL REASONABLE TO ASSUME THAT HE INTENDED TO CROSS OUT THE QUARTER CORNERS.

PLEASE REFER TO THE CORNER CERTIFICATE FOR THE NE CORNER OF THE SE 1/4 SW 1/4 SECTION 18-T83N-R2W WHICH SHOWS A SLIGHT BEND IN THE EAST LINE OF THE SW 1/4 OF SAID SECTION 18 AT THE NE CORNER OF SAID SE 1/4 SW 1/4.

SO AS NOT TO COME AS A SURPRISE TO ANYONE, THE GRASS WAS (AT THE TIME OF OUR SURVEY) OVER HEAD HIGH AND DENSE. HOPEFULLY IT WILL BE BETTER FOR YOU.

PAGE 1 of 2



I hereby certify that this land surveying document and the related survey work was performed by me or under my direct personal supervision and that I am a duly registered Land Surveyor under the laws of the State of Iowa.

Signed: *Clarence J. Walton* 7/31/12
 Clarence J. Walton, L.S.
 My Registration Renewal Date is December 31, 2013
 Iowa License Number 11310
 Pages or sheets covered by this seal: 1 of 2.

- A. THERE IS NO CERTIFICATE FOR THE CORNER ON FILE WITH THE RECORDER OF THE COUNTY IN WHICH THE CORNER IS LOCATED.
- B. THE CORNER MONUMENT HAS BEEN REPLACED OR MODIFIED.
- C. THE SURVEYOR IN RESPONSIBLE CHARGE OF THE LAND SURVEYING ACCEPTS A CORNER POSITION THAT DIFFERS FROM THAT SHOWN IN THE PUBLIC RECORDS OF THE COUNTY IN WHICH THE CORNER IS LOCATED.
- D. THE REFERENCE TIES REFERRED TO IN AN EXISTING PUBLIC RECORD NO LONGER EXIST.

CORNERS TO BE INDEXED

CORNER	SECTION	TOWNSHIP	RANGE
CENTER	18	83N	2W

JONES COUNTY ENGINEER'S OFFICE



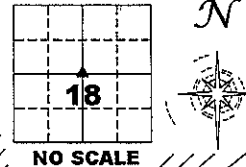
19501 HWY. 64, ANAMOSA, IOWA 52205
(319) 462-3785

UNITED STATES PUBLIC LAND SURVEY CORNER CERTIFICATE

LAND SURVEY MONUMENTS SITUATED IN SECTION 18, TOWNSHIP 83 NORTH,
 RANGE 2 WEST OF THE 5TH PRINCIPAL MERIDIAN, JONES COUNTY, IOWA.

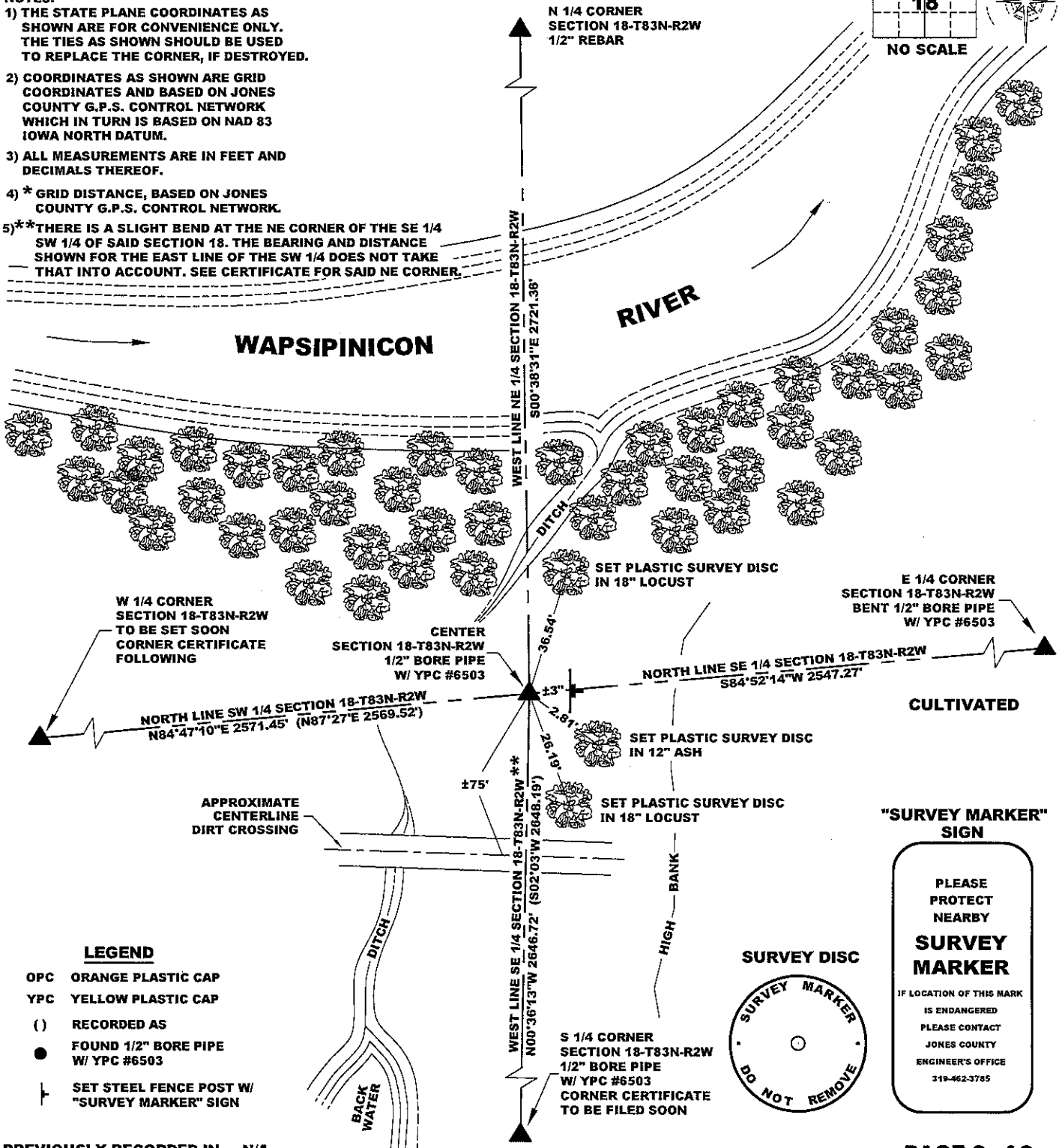
STATE PLANE COORDINATE
 NAD 83 IOWA NORTH
 N: 3471380.05
 E: 5567471.13

CORNER CENTER SECTION 18 TOWNSHIP 83N RANGE 2W



NOTES:

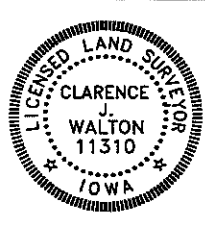
- 1) THE STATE PLANE COORDINATES AS SHOWN ARE FOR CONVENIENCE ONLY. THE TIES AS SHOWN SHOULD BE USED TO REPLACE THE CORNER, IF DESTROYED.
- 2) COORDINATES AS SHOWN ARE GRID COORDINATES AND BASED ON JONES COUNTY G.P.S. CONTROL NETWORK WHICH IN TURN IS BASED ON NAD 83 IOWA NORTH DATUM.
- 3) ALL MEASUREMENTS ARE IN FEET AND DECIMALS THEREOF.
- 4) * GRID DISTANCE, BASED ON JONES COUNTY G.P.S. CONTROL NETWORK.
- 5)** THERE IS A SLIGHT BEND AT THE NE CORNER OF THE SE 1/4 SW 1/4 OF SAID SECTION 18. THE BEARING AND DISTANCE SHOWN FOR THE EAST LINE OF THE SW 1/4 DOES NOT TAKE THAT INTO ACCOUNT. SEE CERTIFICATE FOR SAID NE CORNER.



- LEGEND**
- OPC ORANGE PLASTIC CAP
 - YPC YELLOW PLASTIC CAP
 - () RECORDED AS
 - FOUND 1/2" BORE PIPE W/ YPC #6503
 - † SET STEEL FENCE POST W/ "SURVEY MARKER" SIGN

PREVIOUSLY RECORDED IN N/A **PAGE 2 of 2**
MONUMENT DESCRIPTION AND HOW ESTABLISHED FOUND THIN WALLED 1/2" BORE PIPE WITH YELLOW PLASTIC CAP # 6503 NEARLY FLUSH WITH EXISTING GROUND SURFACE. CORNER IS REFERENCED ON A SURVEY RECORDED IN PLAT BOOK P, PAGE 59 AND IN RECORDER'S DOCUMENT 2003 1561, PLAT OF SURVEY PARCEL 2004-85 IN PLAT BOOK P, PAGE 208 AND RECORDER'S DOCUMENT 2004 3341, AND PLAT OF SURVEY PARCEL 2004-87 IN PLAT BOOK P PAGE 209 AND RECORDER'S DOCUMENT 2004 3342. SET STEEL FENCE POST WITH A "SURVEY MARKER" SIGN RIVETED TO POST ±3" EAST OF PIPE AS A WITNESS TO THIS CORNER. PLEASE REFER TO COVER SHEET FOR MORE INFORMATION.

DATE OF SURVEY: JULY 18, 2012 FIELD BOOK: 381, PAGE 76.



I hereby certify that this land surveying document and the related survey work was performed by me or under my direct personal supervision and that I am a duly registered Land Surveyor under the laws of the State of Iowa.
 Signed: *Clarence J. Walton* 7/31/12
 Clarence J. Walton, L.S.
 My Registration Renewal Date is December 31, 2013
 Iowa License Number 11310
 Pages or sheets covered by this seal: 2 of 2.

- A. THERE IS NO CERTIFICATE FOR THE CORNER ON FILE WITH THE RECORDER OF THE COUNTY IN WHICH THE CORNER IS LOCATED.
- B. THE CORNER MONUMENT HAS BEEN REPLACED OR MODIFIED.
- C. THE SURVEYOR IN RESPONSIBLE CHARGE OF THE LAND SURVEYING ACCEPTS A CORNER POSITION THAT DIFFERS FROM THAT SHOWN IN THE PUBLIC RECORDS OF THE COUNTY IN WHICH THE CORNER IS LOCATED.
- D. THE REFERENCE TIES REFERRED TO IN AN EXISTING PUBLIC RECORD NO LONGER EXIST.

CORNERS TO BE INDEXED			
CORNER	SECTION	TOWNSHIP	RANGE
CENTER	18	83N	2W

JONES COUNTY ENGINEER'S OFFICE

19501 HWY. 64, ANAMOSA, IOWA 52205
 (319) 462-3785