

Jones County Marie Krutzfield Recorder
 Fee Book 2012 3552
 12/03/2012 @1143AM # Pages 1
 ZSC SEC COR CERT
 Total Fees: \$7.00

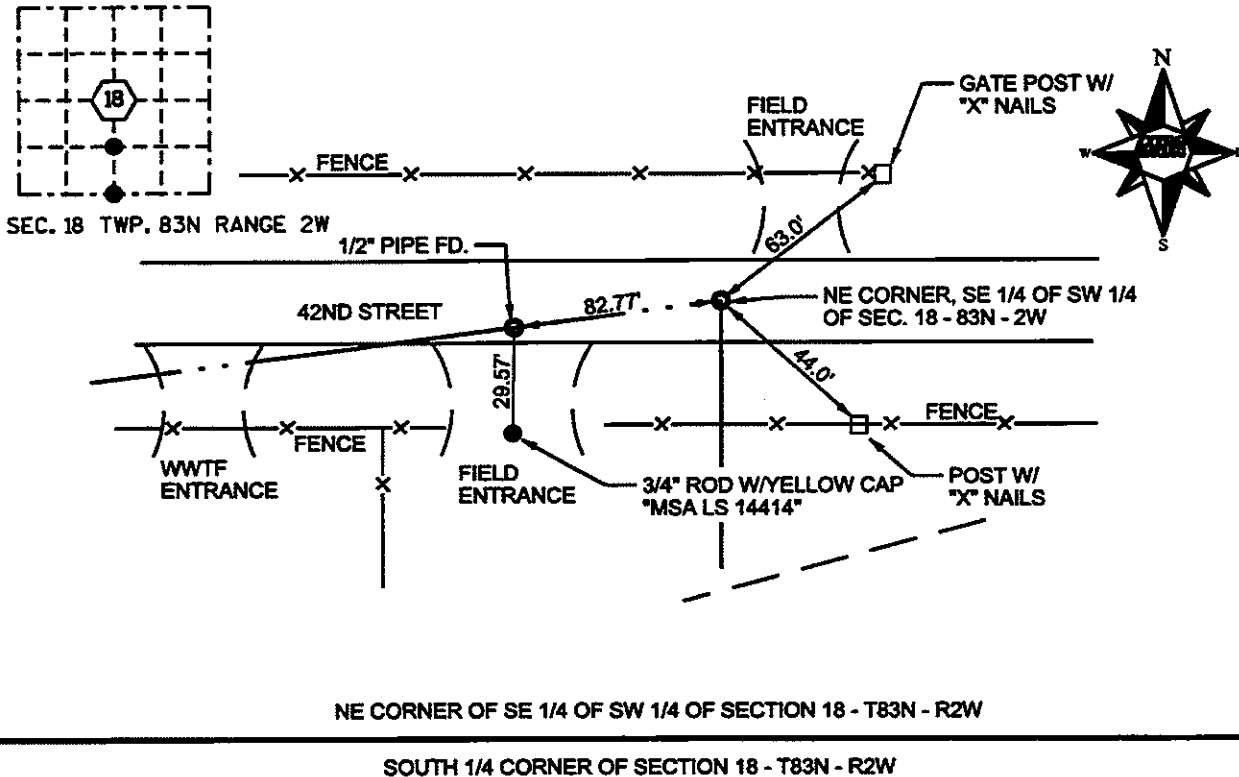
PREPARED BY: MSA PROFESSIONAL SERVICES, INC 9567 US ROUTE 20 WEST, SUITE 104 GALENA ILL 61036

UNITED STATES PUBLIC LAND SURVEY CORNER CERTIFICATE

LAND SURVEY MONUMENTS SITUATED IN SECTION 18, TOWNSHIP 83 NORTH, RANGE 2 WEST, OF THE FIFTH PRINCIPAL MERIDIAN, JONES COUNTY, IOWA.

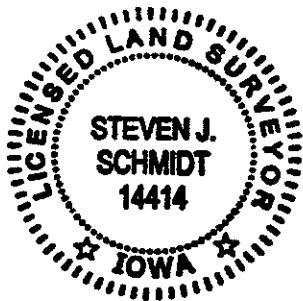
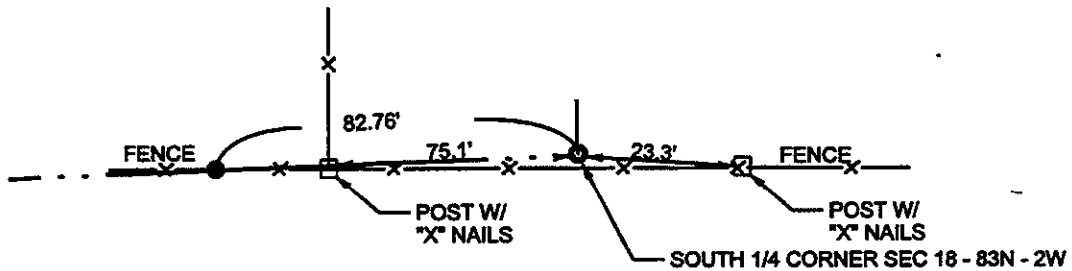
MONUMENT DESCRIPTION AND REMARKS: NORTHERLY CORNER IS A 1/2" DIA. PIPE WITH AN UNREADABLE CAP BURIED 5" DEEP IN GRAVEL ROAD.

THE SOUTH 1/4 CORNER IS A 1/2" PIPE WITH A CAP "BRUNNER *6503"



NE CORNER OF SE 1/4 OF SW 1/4 OF SECTION 18 - T83N - R2W

SOUTH 1/4 CORNER OF SECTION 18 - T83N - R2W



I HERBY CERTIFY THAT THIS LAND SURVEYING DOCUMENT WAS PREPARED AND RELATED SURVEY WORK WAS PERFORMED BY ME OR UNDER MY DIRECT PERSONAL SUPERVISION AND THAT I AM A DULY LICENSED LAND SURVEYOR UNDER THE LAWS OF THE STATE OF IOWA.

Steven J. Schmidt 11-27-2012
 STEVEN J. SCHMIDT DATE
 LICENSE NUMBER 14414
 MY LICENSE RENEWAL DATE IS DECEMBER 31, 2013
 PAGES OR SHEET COVERED BY THIS SEAL: SHEET 1 OF 1

CORNERS TO BE INDEXED

CORNER	SECTION	TWP	RANGE
NE OF SE-SW	18	83N	2W
S 1/4 COR	18	83N	2W

COPY

Jones County Marie Krutzfield Recorder
 Fee Book 2012 3092
 10/24/2012 @0317PM # Pages 1
 ZSC SEC COR CERT
 Total Fees: \$0.00

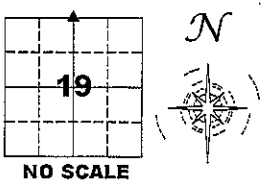
PREPARED BY
 CLARENCE J. WALTON, JONES COUNTY ENGINEER'S OFFICE, 19501 HWY. 64, ANAMOSA, IOWA, 52205 (319) 462-3785

UNITED STATES PUBLIC LAND
 SURVEY CORNER CERTIFICATE

LAND SURVEY MONUMENTS SITUATED IN SECTION 19, TOWNSHIP 83 NORTH,
 RANGE 2 WEST OF THE 5TH PRINCIPAL MERIDIAN, JONES COUNTY, IOWA.

STATE PLANE COORDINATE
 NAD 83 IOWA NORTH
 N: 3468733.47
 E: 5567499.01

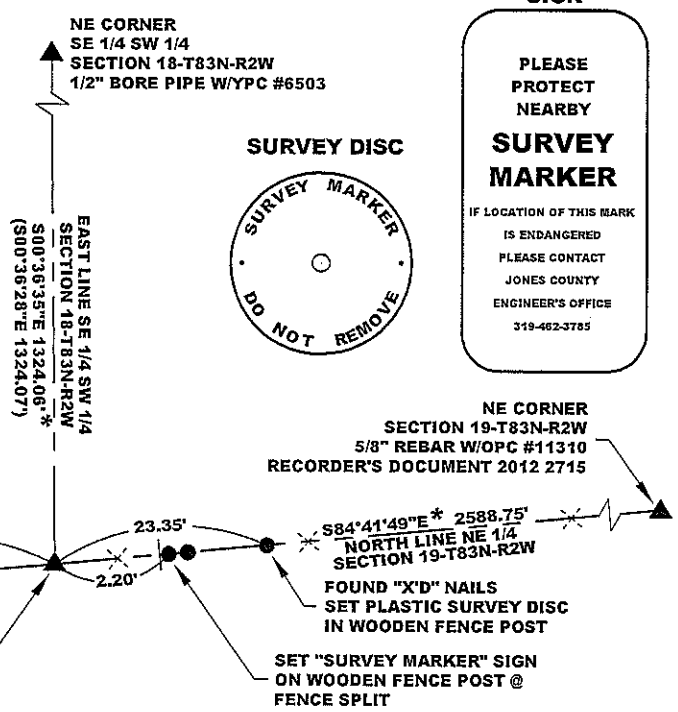
CORNER SECTION TOWNSHIP RANGE
 N1/4 CORNER 19 83N 2W



- NOTES:
- 1) THE STATE PLANE COORDINATES AS SHOWN ARE FOR CONVENIENCE ONLY. THE TIES AS SHOWN SHOULD BE USED TO REPLACE THE CORNER, IF DESTROYED.
 - 2) COORDINATES AS SHOWN ARE GRID COORDINATES AND BASED ON JONES COUNTY G.P.S. CONTROL NETWORK WHICH IN TURN IS BASED ON NAD 83 IOWA NORTH DATUM.
 - 3) ALL MEASUREMENTS ARE IN FEET AND DECIMALS THEREOF.
 - 4) * GRID DISTANCE, BASED ON JONES COUNTY G.P.S. CONTROL NETWORK.

LEGEND

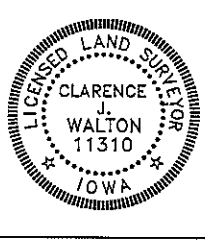
- OPC ORANGE PLASTIC CAP
- YPC YELLOW PLASTIC CAP
- () RECORDED AS
- "SURVEY MARKER" SIGN IN WOODEN FENCE POST



PAGE 1 of 1

PREVIOUSLY RECORDED IN N/A
 MONUMENT DESCRIPTION AND HOW ESTABLISHED FOUND 1/2" BORE PIPE WITH YELLOW PLASTIC CAP #6503 WITH 9-1/2" X 5" X 4" GREY GRANITE STONE ON EAST SIDE OF PIPE. NO CERTIFICATES OF RECORD WERE FOUND.

DATE OF SURVEY: 10/16/12 FIELD BOOK: #381, PAGE 67



I hereby certify that this land surveying document and the related survey work was performed by me or under my direct personal supervision and that I am a duly registered Land Surveyor under the laws of the State of Iowa.
 Signed: *Clarence J. Walton* 10/24/12
 Clarence J. Walton, L.S.
 My Registration Renewal Date is December 31, 2013
 Iowa License Number 11310
 Pages or sheets covered by this seal: 1 of 1.

- A. THERE IS NO CERTIFICATE FOR THE CORNER ON FILE WITH THE RECORDER OF THE COUNTY IN WHICH THE CORNER IS LOCATED.
- B. THE CORNER MONUMENT HAS BEEN REPLACED OR MODIFIED.
- C. THE SURVEYOR IN RESPONSIBLE CHARGE OF THE LAND SURVEYING ACCEPTS A CORNER POSITION THAT DIFFERS FROM THAT SHOWN IN THE PUBLIC RECORDS OF THE COUNTY IN WHICH THE CORNER IS LOCATED.
- D. THE REFERENCE TIES REFERRED TO IN AN EXISTING PUBLIC RECORD NO LONGER EXIST.

CORNERS TO BE INDEXED

CORNER	SECTION	TOWNSHIP	RANGE
N 1/4 CORNER	19	83N	2W
S 1/4 CORNER	18	83N	3W

JONES COUNTY ENGINEER'S OFFICE



19501 HWY. 64, ANAMOSA, IOWA 52205
 (319) 462-3785

THIS IS NOT A CERTIFICATION

JONES COUNTY ENGINEER'S OFFICE, 19501 HWY. 64, ANAMOSA, IOWA, 52205 (319)462-3785

UNITED STATES PUBLIC LAND SURVEY CORNER CERTIFICATE

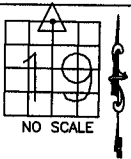
LAND SURVEY MONUMENTS SITUATED IN SECTION 19, TOWNSHIP 83
NORTH, RANGE 2 WEST OF THE 5TH P.M., JONES COUNTY, IOWA

CORNERS TO BE INDEXED

CORNER SECTION TOWNSHIP RANGE
N-QUARTER 19 83N 2W

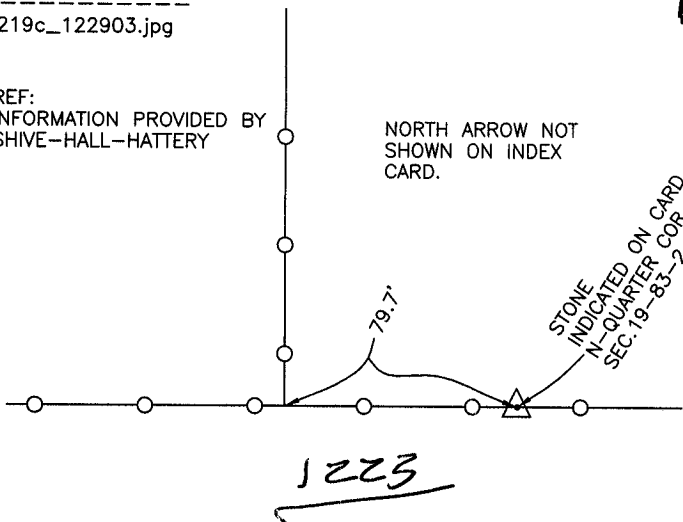
OFFICE FILE NO.

83219c_122903.jpg



REF:
INFORMATION PROVIDED BY
SHIVE-HALL-HATTERY

NORTH ARROW NOT
SHOWN ON INDEX
CARD.

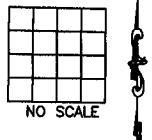


PREVIOUSLY RECORDED IN BOOK _____, PAGE _____
MONUMENT DESCRIPTION AND HOW ESTABLISHED SHIVE-
HALL-HATTERY FOUND STONE AND INDICATED AS THE NORTH QUARTER
CORNER SECTION 19, TOWNSHIP 83 NORTH, RANGE 2 WEST OF THE
5TH PRINCIPAL MERIDIAN, JONES COUNTY, IOWA. SIZE OF STONE
NOT INDICATED.

CORNERS TO BE INDEXED

CORNER SECTION TOWNSHIP RANGE

OFFICE FILE NO.

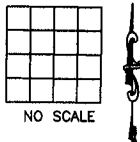


PREVIOUSLY RECORDED IN BOOK _____, PAGE _____
MONUMENT DESCRIPTION AND HOW ESTABLISHED _____

CORNERS TO BE INDEXED

CORNER SECTION TOWNSHIP RANGE

OFFICE FILE NO.

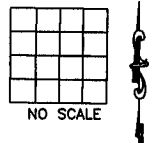


PREVIOUSLY RECORDED IN BOOK _____, PAGE _____
MONUMENT DESCRIPTION AND HOW ESTABLISHED _____

CORNERS TO BE INDEXED

CORNER SECTION TOWNSHIP RANGE

OFFICE FILE NO.



PREVIOUSLY RECORDED IN BOOK _____, PAGE _____
MONUMENT DESCRIPTION AND HOW ESTABLISHED _____

~~I hereby declare that this plat, survey or report was made by me or under my direct personal supervision and that I am a duly registered Land Surveyor under the laws of the State of Iowa.~~

Signed:

SEAL

JONES COUNTY
ENGINEER'S OFFICE

19501 HWY. 64,
ANAMOSA, IOWA,
52205 (319)462-3785