

COPY

Jones County Marie Krutzfield Recorder
 Fee Book 2012 2715
 09/17/2012 @1142AM # Pages 1
 ZSC SEC COR CERT
 Total Fees: \$0.00

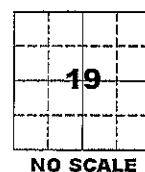
PREPARED BY
 CLARENCE J. WALTON, JONES COUNTY ENGINEER'S OFFICE, 19501 HWY. 64, ANAMOSA, IOWA, 52205 (319) 462-3785

UNITED STATES PUBLIC LAND SURVEY CORNER CERTIFICATE

**LAND SURVEY MONUMENTS SITUATED IN SECTION 19, TOWNSHIP 83 NORTH,
 RANGE 2 WEST OF THE 5TH PRINCIPAL MERIDIAN, JONES COUNTY, IOWA.**

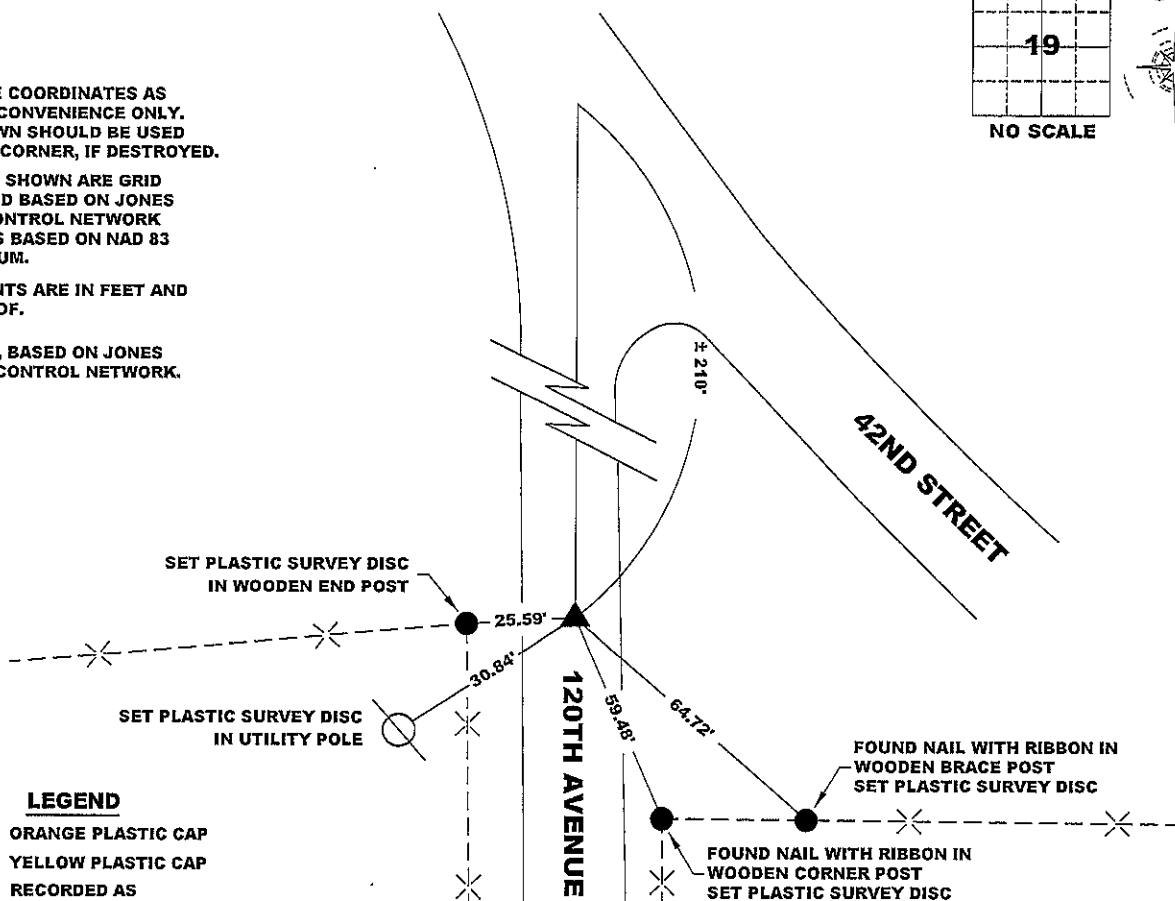
STATE PLANE COORDINATE
 NAD 83 IOWA NORTH
 N: 3468972.73
 E: 5570076.68

CORNER SECTION TOWNSHIP RANGE
 NE CORNER 19 83N 2W



NOTES:

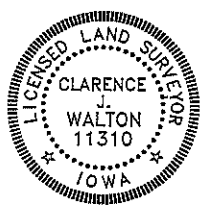
- 1) THE STATE PLANE COORDINATES AS SHOWN ARE FOR CONVENIENCE ONLY. THE TIES AS SHOWN SHOULD BE USED TO REPLACE THE CORNER, IF DESTROYED.
- 2) COORDINATES AS SHOWN ARE GRID COORDINATES AND BASED ON JONES COUNTY G.P.S. CONTROL NETWORK WHICH IN TURN IS BASED ON NAD 83 IOWA NORTH DATUM.
- 3) ALL MEASUREMENTS ARE IN FEET AND DECIMALS THEREOF.
- 4) * GRID DISTANCE, BASED ON JONES COUNTY G.P.S. CONTROL NETWORK.



LEGEND

- OPC ORANGE PLASTIC CAP
- YPC YELLOW PLASTIC CAP
- () RECORDED AS

PREVIOUSLY RECORDED IN N/A
 MONUMENT DESCRIPTION AND HOW ESTABLISHED REPLACED FOUND BRIDGE DECK SPIKE WITH 5/8" REBAR WITH ORANGE PLASTIC CAP #11310 SET ± 6" BELOW PRESENT EXISTING ROAD SURFACE. THE RECORDED DISTANCE FROM THE E 1/4 CORNER OF SECTION 18-T86N-R2W TO NE CORNER SECTION 19-T86N R-2W PER PLAT OF SURVEY FOR PARCEL 2002-110 RECORDED IN RECORDER'S DOCUMENT 2002 4540 IS 2635.42 FEET. MEASURED DISTANCE FROM SAID E 1/4 CORNER TO FOUND SPIKE (NOW REPLACED) IS 2635.95 FEET. AN 8' X 10' X 5' DEEP HOLE WAS DUG IN SEARCH OF OTHER EVIDENCE. A FEW SMALL LIMESTONES WERE FOUND BUT WERE REJECTED OUT OF HAND DUE TO THEIR SMALL SIZES. I ACCEPTED THE BRIDGE DECK SPIKE AS BEST REPRESENTING THE POSITION OF THE FOUND 5/8" REBAR REFERRED TO IN THE AFOREMENTIONED PLAT OF SURVEY. KEEP IN MIND, THE HEAD OF THE SPIKE COULD HAVE BEEN MISTAKEN FOR THE TOP OF A 5/8" REBAR, PARTICULARLY IF THE ROAD WAS FROZEN OR OTHERWISE DIFFICULT TO DIG IN.
 DATE OF SURVEY: AUGUST 6, 2012 FIELD BOOK: 381, PAGE 75.



I hereby certify that this land surveying document and the related survey work was performed by me or under my direct personal supervision and that I am a duly registered Land Surveyor under the laws of the State of Iowa.
 Signed: *Clarence J. Walton* 9/17/12
 Clarence J. Walton, L.S.
 My Registration Renewal Date is December 31, 2013
 Iowa License Number 11310
 Pages or sheets covered by this seal: 1 of 1.

- A. THERE IS NO CERTIFICATE FOR THE CORNER ON FILE WITH THE RECORDER OF THE COUNTY IN WHICH THE CORNER IS LOCATED.
- B. THE CORNER MONUMENT HAS BEEN REPLACED OR MODIFIED.
- C. THE SURVEYOR IN RESPONSIBLE CHARGE OF THE LAND SURVEYING ACCEPTS A CORNER POSITION THAT DIFFERS FROM THAT SHOWN IN THE PUBLIC RECORDS OF THE COUNTY IN WHICH THE CORNER IS LOCATED.
- D. THE REFERENCE TIES REFERRED TO IN AN EXISTING PUBLIC RECORD NO LONGER EXIST.

CORNERS TO BE INDEXED

| CORNER | SECTION | TOWNSHIP | RANGE |
|-----------|---------|----------|-------|
| NE CORNER | 19 | 83N | 2W |
| SE CORNER | 18 | 83N | 2W |
| SW CORNER | 17 | 83N | 2W |
| NW CORNER | 20 | 83N | 2W |

JONES COUNTY ENGINEER'S OFFICE



19501 HWY. 64, ANAMOSA, IOWA 52205
 (319) 462-3785