

2001 1601

FILED
RECORDERS OFFICE
JONES COUNTY IOWA

01 MAY 15 AM 10:17

MARIE KRUTZFIELD
RECORDER *No Fee*

J.D. Tjepkes, LS. JONES COUNTY ENGINEER'S OFFICE, 19501 HWY. 64, ANAMOSA, IOWA, 52205 (319)462-3785

UNITED STATES PUBLIC LAND SURVEY CORNER CERTIFICATE

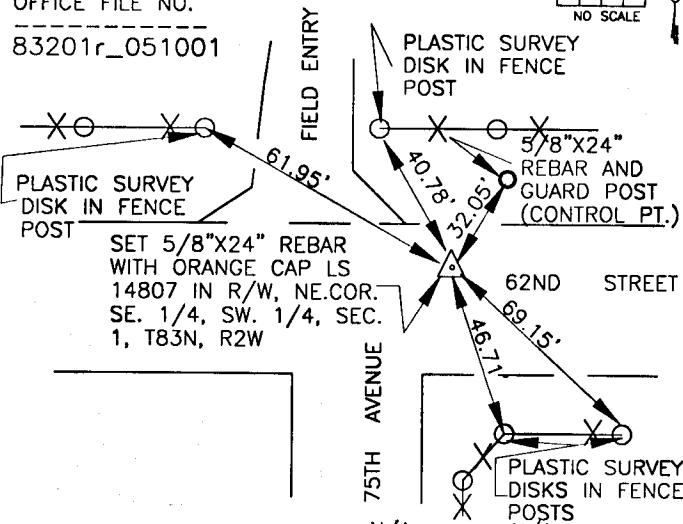
LAND SURVEY MONUMENTS SITUATED IN SECTION 1, TOWNSHIP 83
NORTH, RANGE 2 WEST OF THE 5TH P.M., JONES COUNTY, IOWA

CORNERS TO BE INDEXED

CORNER SECTION TOWNSHIP RANGE
NE.COR.SESW 1 83N 2W



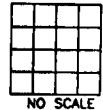
OFFICE FILE NO.
83201r_051001



PREVIOUSLY RECORDED IN BOOK N/A, PAGE N/A
MONUMENT DESCRIPTION AND HOW ESTABLISHED SET 5/8" X24 REBAR WITH ORANGE CAP IN ROAD R/W ON SPLIT BETWEEN CENTER AND SOUTH QUARTER CORNER SEC. 1, TOWNSHIP 83 NORTH, RANGE 2 WEST. SET REFERENCE POINTS AND TIED OUT AS INDICATED.

CORNERS TO BE INDEXED

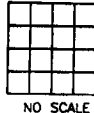
CORNER SECTION TOWNSHIP RANGE
OFFICE FILE NO.



PREVIOUSLY RECORDED IN BOOK _____, PAGE _____
MONUMENT DESCRIPTION AND HOW ESTABLISHED _____

CORNERS TO BE INDEXED

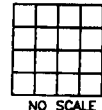
CORNER SECTION TOWNSHIP RANGE
OFFICE FILE NO.



PREVIOUSLY RECORDED IN BOOK _____, PAGE _____
MONUMENT DESCRIPTION AND HOW ESTABLISHED _____

CORNERS TO BE INDEXED

CORNER SECTION TOWNSHIP RANGE
OFFICE FILE NO.



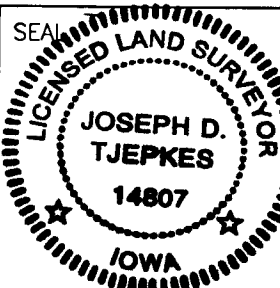
PREVIOUSLY RECORDED IN BOOK _____, PAGE _____
MONUMENT DESCRIPTION AND HOW ESTABLISHED _____

I hereby declare that this plat, survey or report was made by me or under my direct personal supervision and that I am a duly registered Land Surveyor under the laws of the State of Iowa.

Signed:

Joseph D. Tjepkes 5-12-01

Joseph D. Tjepkes L.S. Iowa Reg. No. 14807
My Registration Renewal Date is December 31, 2002



J.D. Tjepkes LS 14807
JONES COUNTY
ENGINEER'S OFFICE

19501 HWY. 64,
ANAMOSA, IOWA,
52205 (319)462-3785