

# THIS IS NOT A CERTIFICATION

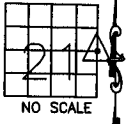
JONES COUNTY ENGINEER'S OFFICE, 19501 HWY. 64, ANAMOSA, IOWA, 52205 (319)462-3785

## UNITED STATES PUBLIC LAND SURVEY CORNER CERTIFICATE

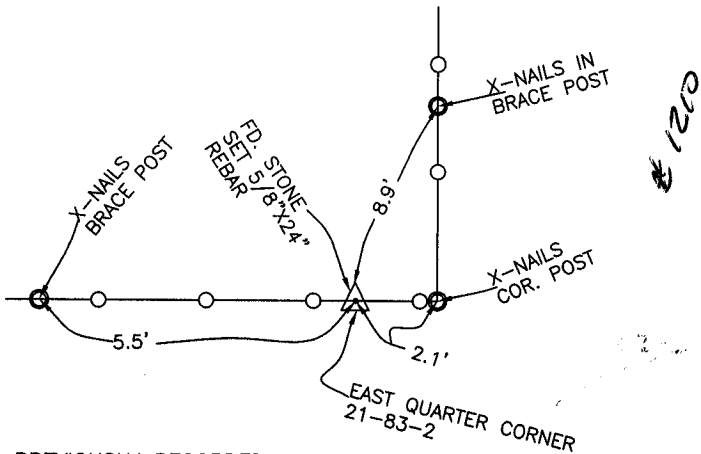
LAND SURVEY MONUMENTS SITUATED IN SECTION 21, TOWNSHIP 83  
NORTH, RANGE 2 WEST OF THE 5TH P.M., JONES COUNTY, IOWA

### CORNERS TO BE INDEXED

CORNER	SECTION	TOWNSHIP	RANGE
E-QUARTER	21	83N	2W
OFFICE FILE NO.			
83221o_122903.jpg			



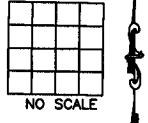
COUNTY SURVEY CREW:  
POWELL-TUETKEN  
B-339 10-28-96  
P-8



PREVIOUSLY RECORDED IN BOOK \_\_\_\_\_, PAGE \_\_\_\_\_  
MONUMENT DESCRIPTION AND HOW ESTABLISHED \_\_\_\_\_  
COUNTY SURVEY CREW FOUND STONE, SET 5/8"X24" REBAR. SET REFERENCE POINTS AND TIED OUT AS INDICATED. EAST QUARTER CORNER SECTION 21, TOWNSHIP 83 NORTH, RANGE 2 WEST OF THE 5TH PRINCIPAL MERIDIAN, JONES COUNTY, IOWA.

### CORNERS TO BE INDEXED

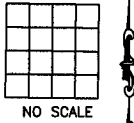
CORNER	SECTION	TOWNSHIP	RANGE
OFFICE FILE NO.			
_____			



PREVIOUSLY RECORDED IN BOOK \_\_\_\_\_, PAGE \_\_\_\_\_  
MONUMENT DESCRIPTION AND HOW ESTABLISHED \_\_\_\_\_  
\_\_\_\_\_  
\_\_\_\_\_

### CORNERS TO BE INDEXED

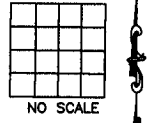
CORNER	SECTION	TOWNSHIP	RANGE
OFFICE FILE NO.			
_____			



PREVIOUSLY RECORDED IN BOOK \_\_\_\_\_, PAGE \_\_\_\_\_  
MONUMENT DESCRIPTION AND HOW ESTABLISHED \_\_\_\_\_  
\_\_\_\_\_  
\_\_\_\_\_

### CORNERS TO BE INDEXED

CORNER	SECTION	TOWNSHIP	RANGE
OFFICE FILE NO.			
_____			



PREVIOUSLY RECORDED IN BOOK \_\_\_\_\_, PAGE \_\_\_\_\_  
MONUMENT DESCRIPTION AND HOW ESTABLISHED \_\_\_\_\_  
\_\_\_\_\_  
\_\_\_\_\_

~~I hereby declare that this plat, survey or report was made by me or under my direct personal supervision and that I am a duly registered Land Surveyor under the laws of the State of Iowa.~~

Signed: \_\_\_\_\_

SEAL

JONES COUNTY  
ENGINEER'S OFFICE

19501 HWY. 64,  
ANAMOSA, IOWA,  
52205 (319)462-3785