

# THIS IS NOT A CERTIFICATION

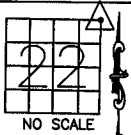
JONES COUNTY ENGINEER'S OFFICE, 19501 HWY. 64, ANAMOSA, IOWA, 52205 (319)462-3785

## UNITED STATES PUBLIC LAND SURVEY CORNER CERTIFICATE

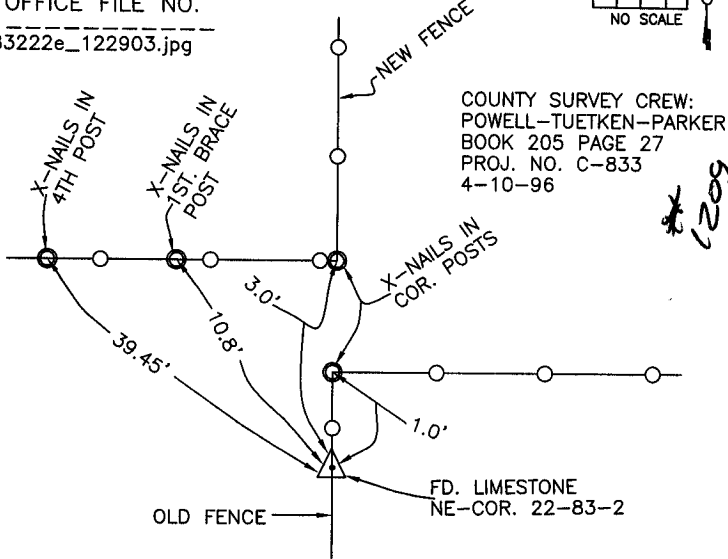
LAND SURVEY MONUMENTS SITUATED IN SECTION 22, TOWNSHIP 83  
NORTH, RANGE 2 WEST OF THE 5TH P.M., JONES COUNTY, IOWA

**CORNERS TO BE INDEXED**

CORNER SECTION TOWNSHIP RANGE  
NORTHEAST 22 83N 2W  
OFFICE FILE NO. \_\_\_\_\_



83222e\_122903.jpg

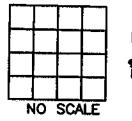


COUNTY SURVEY CREW:  
POWELL-TUETKEN-PARKER  
BOOK 205 PAGE 27  
PROJ. NO. C-833  
4-10-96

PREVIOUSLY RECORDED IN BOOK \_\_\_\_\_, PAGE \_\_\_\_\_  
MONUMENT DESCRIPTION AND HOW ESTABLISHED \_\_\_\_\_  
SURVEY CREW FOUND LIMESTONE, SET 5/8"X24" REBAR ALONG  
NORTH SIDE. SET REFERENCE POINTS AND TIED OUT AS INDICATED.  
NORTHEAST CORNER OF SECTION 22, TOWNSHIP 83 NORTH, RANGE  
2 WEST OF THE 5TH PRINCIPAL MERIDIAN, JONES COUNTY, IOWA.

**CORNERS TO BE INDEXED**

CORNER SECTION TOWNSHIP RANGE

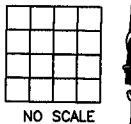


OFFICE FILE NO. \_\_\_\_\_

PREVIOUSLY RECORDED IN BOOK \_\_\_\_\_, PAGE \_\_\_\_\_  
MONUMENT DESCRIPTION AND HOW ESTABLISHED \_\_\_\_\_  
\_\_\_\_\_  
\_\_\_\_\_

**CORNERS TO BE INDEXED**

CORNER SECTION TOWNSHIP RANGE

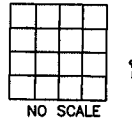


OFFICE FILE NO. \_\_\_\_\_

PREVIOUSLY RECORDED IN BOOK \_\_\_\_\_, PAGE \_\_\_\_\_  
MONUMENT DESCRIPTION AND HOW ESTABLISHED \_\_\_\_\_  
\_\_\_\_\_  
\_\_\_\_\_

**CORNERS TO BE INDEXED**

CORNER SECTION TOWNSHIP RANGE



OFFICE FILE NO. \_\_\_\_\_

PREVIOUSLY RECORDED IN BOOK \_\_\_\_\_, PAGE \_\_\_\_\_  
MONUMENT DESCRIPTION AND HOW ESTABLISHED \_\_\_\_\_  
\_\_\_\_\_  
\_\_\_\_\_

~~I hereby declare that this plat, survey or report was made by me or under my direct personal supervision and that I am a duly registered Land Surveyor under the laws of the State of Iowa.~~

Signed: \_\_\_\_\_

SEAL

JONES COUNTY  
ENGINEER'S OFFICE

19501 HWY. 64,  
ANAMOSA, IOWA,  
52205 (319)462-3785