

2004 2833

FILED
RECORDERS OFFICE
JONES COUNTY IOWA

04 JUL 30 PM 1:19

MARIE KRUTZFIELD
RECORDER NO FEE

J.D. TJEPKES, LS. JONES COUNTY ENGINEER'S OFFICE, 19501 HWY. 64, ANAMOSA, IOWA, 52205 (319)462-3785

UNITED STATES PUBLIC LAND SURVEY CORNER CERTIFICATE

LAND SURVEY MONUMENTS SITUATED IN SECTION 13, TOWNSHIP 83
NORTH, RANGE 2 WEST OF THE 5TH P.M., JONES COUNTY, IOWA

CORNERS TO BE INDEXED

CORNER SECTION TOWNSHIP RANGE
NW-NE-NE 24 83N 2W

OFFICE FILE NO.
83224d_072904.tif



NO SCALE

FIELD NOTES:
7-28-2004
MISC BK
2004
P17

JUNGLE TOWN ROAD

70th AVE

SET
5/8"X24"
REBAR
W/CAP
#14807
FLUSH WITH
GROUND
NW-NE-NE
24-83-2

NOTE: PIN &
CAP 21' WEST
OF CL LANE
SOUTH
49.5' SOUTH OF
DRIVE WEST

171400

HOUSE #7283

SURVEY DISK POWER POLE

97.00'

16.91'

87.85'

LANE

42.28'

SURVEY DISK 20" COTTONWOOD TREE

JUNGLE TOWN ROAD

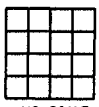
PREVIOUSLY RECORDED IN BOOK NA, PAGE NA
MONUMENT DESCRIPTION AND HOW ESTABLISHED _____

PER PROPORTIONATE DISTANCE AND ON LINE BETWEEN FD NE COR SEC 24 & FD N1/4 SEC 24, SET 5/8"X24" REBAR W/CAP #14807 FLUSH WITH PRESENT GROUND. NW1/4NE1/4NE1/4 SECTION 24 T83N R2W. TIES AS INDICATED.

CORNERS TO BE INDEXED

CORNER SECTION TOWNSHIP RANGE

OFFICE FILE NO. _____



NO SCALE

PREVIOUSLY RECORDED IN BOOK _____, PAGE _____
MONUMENT DESCRIPTION AND HOW ESTABLISHED _____

CORNERS TO BE INDEXED

CORNER SECTION TOWNSHIP RANGE
N1/4 24 83N 2W

OFFICE FILE NO.
83224c_072904.tif



NO SCALE

OLD WOODEN GATE INTO PASTURE

FD X NAILS SET SURVEY DISK 10" ASH TREE

128'

SET SURVEY DISK 30" HICKORY TREE

67.85'

10.30'

12.40'

5.00'

37.70'

FD X NAILS SET SURVEY DISK 9" ASH TREE

SET SURVEY DISK 15" BOX ELDER TREE

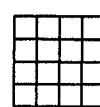
FIELD NOTES:
7-28-2004
MISC BK
2004
P17

PREVIOUSLY RECORDED IN BOOK 367, PAGE 272
MONUMENT DESCRIPTION AND HOW ESTABLISHED _____
PER TIES FROM LS 6581 (DILLON) FILED IN RECORDER'S OFFICE, FOUND 5/8" IRON PIN FLUSH WITH GROUND IN TIMBER PASTURE. RETIED AS INDICATED. N1/4 SECTION 24 T83N R2W.

CORNERS TO BE INDEXED

CORNER SECTION TOWNSHIP RANGE

OFFICE FILE NO. _____



NO SCALE

PREVIOUSLY RECORDED IN BOOK _____, PAGE _____
MONUMENT DESCRIPTION AND HOW ESTABLISHED _____

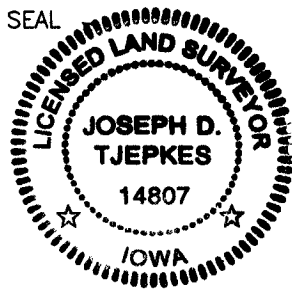
I hereby declare that this plat, survey or report was made by me or under my direct personal supervision and that I am a duly registered Land Surveyor under the laws of the State of Iowa.

Signed

Joseph D. Tjepkes 7-30-04

Joseph D. Tjepkes L.S. Iowa Reg. No. 14807
My Registration Renewal Date is December 31, 2004

SEAL



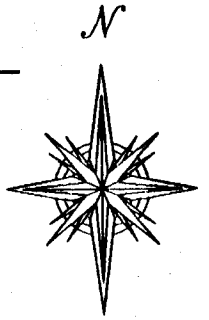
J.D. TJEPKES LS 14807
JONES COUNTY
ENGINEER'S OFFICE

19501 HWY. 64,
ANAMOSA, IOWA,
52205 (319)462-3785

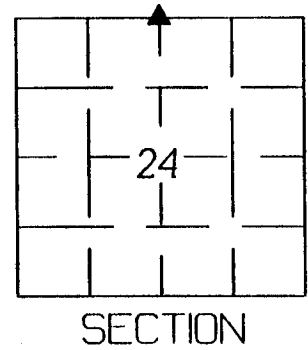
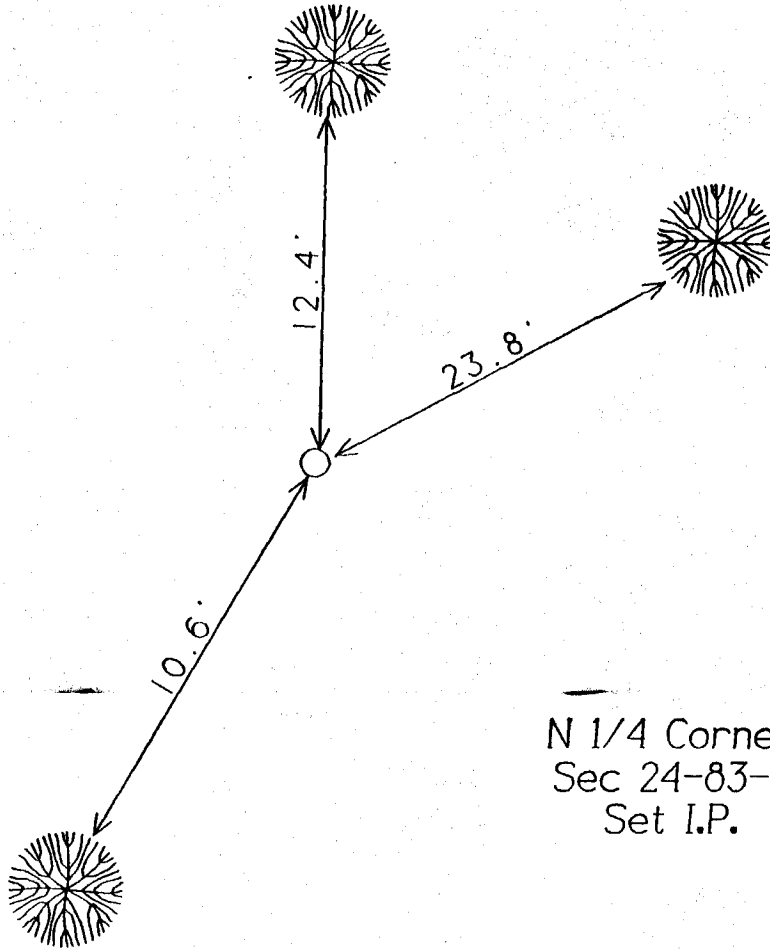
N

United States Public Land Survey Corner Certificate

Land survey corner in Section 24 Township 83
North, Range 2 West of the 5th Principal Meridian
Jones County, Iowa.



No Scale



N 1/4 Corner
Sec 24-83-2
Set I.P.

Certification

I hereby certify that this plat and survey was made by me or under my direct supervision and that I am a duly Registered Land Surveyor under the laws of the State of Iowa.

Harold E. Dillon

10/21/94

Harold E. Dillon Reg.#6581

date

