

SECTION CORNER CERTIFICATE

OF

LAND SURVEY MONUMENTS SITUATED IN SECTION 27, TOWNSHIP 83 NORTH,
RANGE 2 WEST, OF THE FIFTH PRINCIPAL MERIDIAN, JONES, COUNTY, IOWA.

PREVIOUSLY RECORDED IN BOOK _____ AT PAGE _____.

FOR RECORDER'S USE

REASON FOR PREPARING CERTIFICATE:

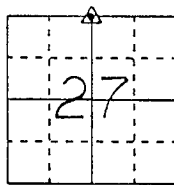
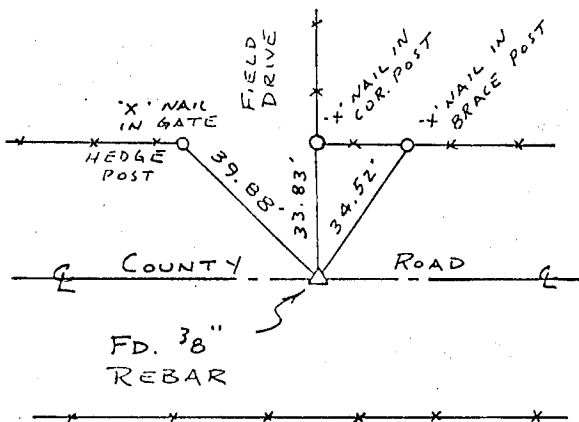
- A) THERE IS NO CERTIFICATE FOR THE CORNER ON FILE WITH THE RECORDER OF THE COUNTY IN WHICH THE CORNER IS LOCATED.
- B) CORNER POSITION DIFFERS FROM THAT SHOWN IN THE PUBLIC RECORDS OF THE COUNTY IN WHICH THE CORNER IS LOCATED.
- C) THE CORNER MONUMENT HAS BEEN REPLACED OR MODIFIED.
- D) THE REFERENCE TIES REFERRED TO IN AN EXISTING PUBLIC RECORD ARE INCORRECT.

MONUMENT DESCRIPTION AND REMARKS :

N 1/4 CORNER SECTION 27, T 83 N, R 2 W FOUND 3/8" REBAR
FLUSH WITH ROAD SURFACE ON E COUNTY ROAD IN LINE
WITH FENCE NORTH

RECOVERY TIE DRAWING

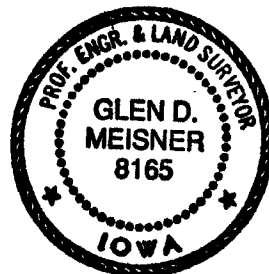
N 1/4 COR 27-83-2



NOT TO SCALE

ON CARD 2-2-93 M.S.

I, GLEN D. MEISNER, CERTIFY THAT THE CORNER LOCATION(S) SHOWN ON THIS RECORD WERE DETERMINED BY ME OR UNDER MY DIRECTION AND CONTROL AND THAT THIS U.S. PUBLIC LAND SURVEY MONUMENT RECORD IS CORRECT AND COMPLETE TO THE BEST OF MY KNOWLEDGE AND BELIEF.



Glen D. Meisner 12-30-92
GLEN D. MEISNER L.S. NO 8165 DATE

- LEGEND**
- ▲ GOVERNMENT CORNER
 - 5/8" THE PIN SET
 - CENTERLINE
 - - - EXISTING FENCE LINE
 - - - R.O.W. LINE

SHEET TITLE: U.S. PUBLIC LAND SURVEY RECORD

PROJECT TITLE: DALE WENDT SURVEY

H H HALL AND HALL ENGINEERS, INC.
226 29TH STREET DRIVE S.E.
CEDAR RAPIDS, IOWA 52403
319-362-9548

D W
N R.W.B.

C K
G.D.M.

A P

D A T E
6-26-92

SCALE
NONE

F N O
B 0725

P N O
R O J 4703