

THIS IS NOT A CERTIFICATION

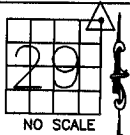
JONES COUNTY ENGINEER'S OFFICE, 19501 HWY. 64, ANAMOSA, IOWA, 52205 (319)462-3785

UNITED STATES PUBLIC LAND SURVEY CORNER CERTIFICATE

LAND SURVEY MONUMENTS SITUATED IN SECTION 29, TOWNSHIP 83
NORTH, RANGE 2 WEST OF THE 5TH P.M., JONES COUNTY, IOWA

CORNERS TO BE INDEXED

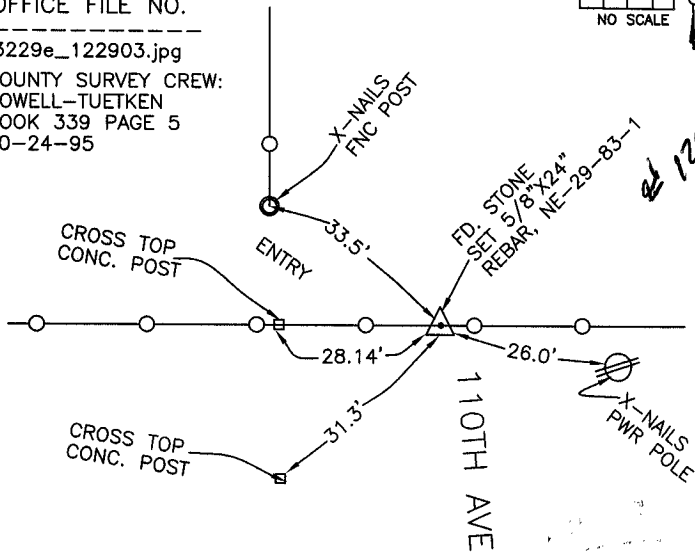
CORNER SECTION TOWNSHIP RANGE
NORTHEAST 29 83N 2W



OFFICE FILE NO.

83229e_122903.jpg

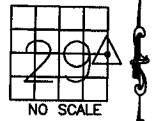
COUNTY SURVEY CREW:
POWELL-TUETKEN
BOOK 339 PAGE 5
10-24-95



PREVIOUSLY RECORDED IN BOOK _____, PAGE _____
MONUMENT DESCRIPTION AND HOW ESTABLISHED COUNTY SURVEY CREW FOUND STONE AND SET 5/8"X24" REBAR ALONGSIDE. SET REFERENCE POINTS AND TIED OUT AS INDICATED. NORTHEAST CORNER SECTION 29, TOWNSHIP 83 NORTH, RANGE 2 WEST OF THE 5TH PRINCIPAL MERIDIAN, JONES COUNTY, IOWA.

CORNERS TO BE INDEXED

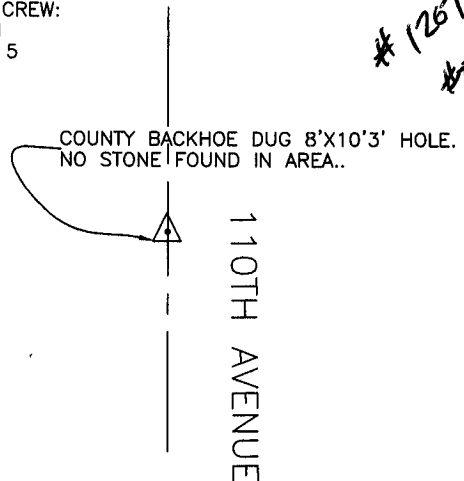
CORNER SECTION TOWNSHIP RANGE
E-QUARTER 29 83N 2W



OFFICE FILE NO.

83229o_122903.jpg

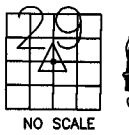
COUNTY SURVEY CREW:
POWELL-TUETKEN
BOOK 339 PAGE 5
10-24-96



PREVIOUSLY RECORDED IN BOOK _____, PAGE _____
MONUMENT DESCRIPTION AND HOW ESTABLISHED _____

CORNERS TO BE INDEXED

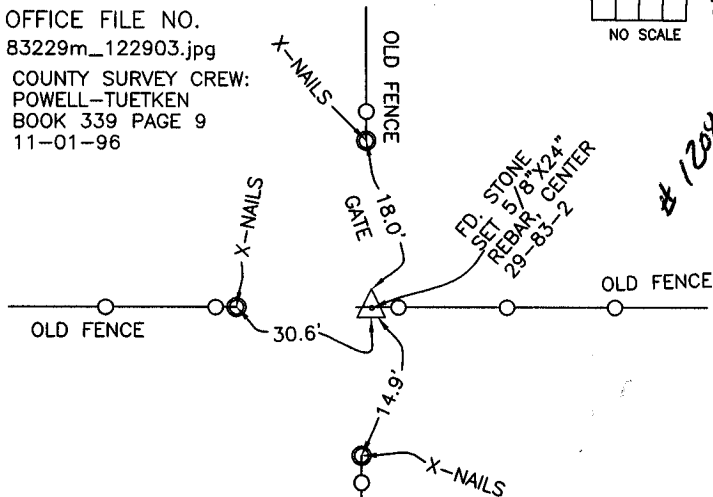
CORNER SECTION TOWNSHIP RANGE
CENTER 29 83N 2W



OFFICE FILE NO.

83229m_122903.jpg

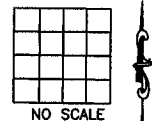
COUNTY SURVEY CREW:
POWELL-TUETKEN
BOOK 339 PAGE 9
11-01-96



PREVIOUSLY RECORDED IN BOOK _____, PAGE _____
MONUMENT DESCRIPTION AND HOW ESTABLISHED COUNTY SURVEY CREW FOUND STONE, SET 5/8"X24" REBAR ALONGSIDE. SET REFERENCE POINTS AND TIED OUT AS INDICATED. CENTER SECTION 29, TOWNSHIP 83 NORTH, RANGE 2 WEST OF THE 5TH PRINCIPAL MERIDIAN, JONES COUNTY, IOWA.

CORNERS TO BE INDEXED

CORNER SECTION TOWNSHIP RANGE



OFFICE FILE NO.

PREVIOUSLY RECORDED IN BOOK _____, PAGE _____
MONUMENT DESCRIPTION AND HOW ESTABLISHED _____

~~I hereby declare that this plat, survey or report was made by me or under my direct personal supervision and that I am a duly registered Land Surveyor under the laws of the State of Iowa.~~

Signed: _____

SEAL

JONES COUNTY
ENGINEER'S OFFICE

19501 HWY. 64,
ANAMOSA, IOWA,
52205 (319)462-3785