

2005 1180

FILED
RECORDERS OFFICE
JONES COUNTY IOWA

05 APR -6 PM 4:18

MARIE KRUTZFIELD
RECORDER 7.00 pd

J.D. TJEPKES, LS. 14807, 23428 RIDGE ROAD, ANAMOSA, IOWA, 52205 (319-462-6067)

UNITED STATES PUBLIC LAND SURVEY CORNER CERTIFICATE

LAND SURVEY MONUMENTS SITUATED IN SECTION___, TOWNSHIP___
NORTH, RANGE___WEST OF THE 5TH P.M., JONES COUNTY, IOWA

LAND SURVEY MONUMENTS SITUATED IN SECTION___, TOWNSHIP___
NORTH, RANGE___WEST OF THE 5TH P.M., JONES COUNTY, IOWA

CORNERS TO BE INDEXED

CORNER SECTION TOWNSHIP RANGE

OFFICE FILE NO. _____



NO SCALE

CORNERS TO BE INDEXED

CORNER SECTION TOWNSHIP RANGE

OFFICE FILE NO. _____



NO SCALE

PREVIOUSLY RECORDED IN BOOK___, PAGE___
MONUMENT DESCRIPTION AND HOW ESTABLISHED_____

PREVIOUSLY RECORDED IN BOOK___, PAGE___
MONUMENT DESCRIPTION AND HOW ESTABLISHED_____

LAND SURVEY MONUMENTS SITUATED IN SECTION35, TOWNSHIP84
NORTH, RANGE2 WEST OF THE 5TH P.M., JONES COUNTY, IOWA

LAND SURVEY MONUMENTS SITUATED IN SECTION___, TOWNSHIP___
NORTH, RANGE___WEST OF THE 5TH P.M., JONES COUNTY, IOWA

CORNERS TO BE INDEXED

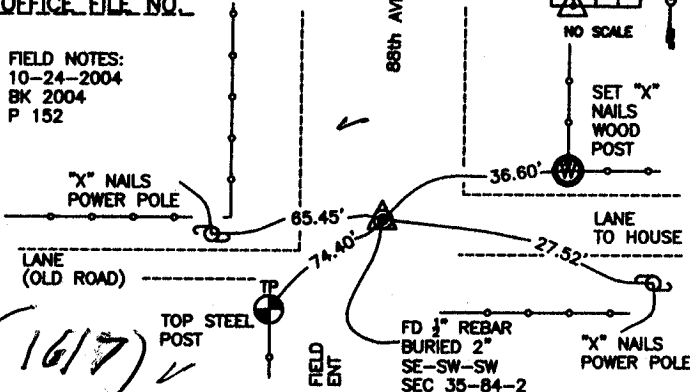
CORNER SECTION TOWNSHIP RANGE

OFFICE FILE NO. _____



NO SCALE

FIELD NOTES:
10-24-2004
BK 2004
P 152



PREVIOUSLY RECORDED IN BOOK NA, PAGE NA
MONUMENT DESCRIPTION AND HOW ESTABLISHED
PER PHYSICAL EVIDENCE AT END OF 88th AVE, FOUND 1/2" REBAR BURIED
2". TIES AS INDICATED FOR SE-SW-SW SECTION 35 T84N R2W.

CORNERS TO BE INDEXED

CORNER SECTION TOWNSHIP RANGE

OFFICE FILE NO. _____



NO SCALE

PREVIOUSLY RECORDED IN BOOK___, PAGE___
MONUMENT DESCRIPTION AND HOW ESTABLISHED_____

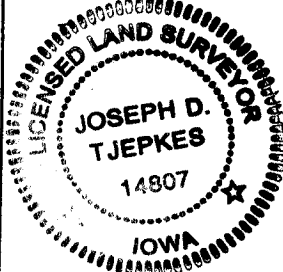
I hereby declare that this plat, survey or report was made by me or under my direct personal supervision and that I am a duly registered Land Surveyor under the laws of the State of Iowa.

Signed:

Joseph D. Tjepkes 4.05.05

Joseph D. Tjepkes L.S. Iowa Reg. No. 14807
My Registration Renewal Date is December 31, 2006

SEAL



J.D. TJEPKES LS 14807
23428 RIDGE ROAD
ANAMOSA, IOWA, 52205
(319-462-3785)

86