

01 AUG -8 PM 2:51

Charline of Hummer

No Fee

CEDAR CO. IOWA RECORDER

J.D. TJEPKES, LS. JONES COUNTY ENGINEER'S OFFICE, 19501 HWY. 64, ANAMOSA, IOWA, 52205 (319)462-3785

UNITED STATES PUBLIC LAND SURVEY CORNER CERTIFICATE

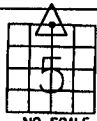
LAND SURVEY MONUMENTS SITUATED IN SECTION 5, TOWNSHIP 82
NORTH, RANGE 2 WEST OF THE 5TH P.M., CEDAR COUNTY, IOWA

CORNERS TO BE INDEXED

CORNER SECTION TOWNSHIP RANGE
N-1/4 5 82N 2W

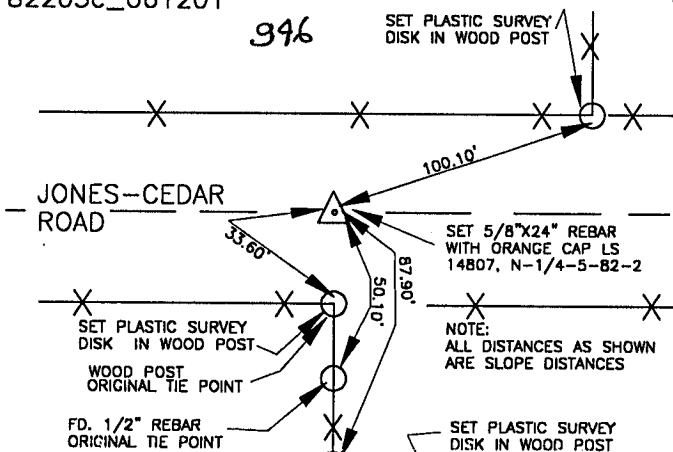
OFFICE FILE NO. _____

82205c_061201



396

SET PLASTIC SURVEY
DISK IN WOOD POST

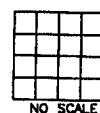


PREVIOUSLY RECORDED IN BOOK N/A, PAGE N/A
MONUMENT DESCRIPTION AND HOW ESTABLISHED SET 5/8"X
24" REBAR WITH ORANGE CAP LS 14807-PER CEDAR COUNTY
ENGINEER'S RECORD TIES-0.4' BELOW ROAD SURFACE. SET
ADDITIONAL REFERENCE POINTS AND TIED OUT AS INDICATED.
NORTH QUARTER CORNER 5-82-2, CEDAR COUNTY, IOWA

CORNERS TO BE INDEXED

CORNER SECTION TOWNSHIP RANGE

OFFICE FILE NO. _____

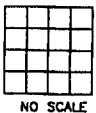


PREVIOUSLY RECORDED IN BOOK _____, PAGE _____
MONUMENT DESCRIPTION AND HOW ESTABLISHED _____

CORNERS TO BE INDEXED

CORNER SECTION TOWNSHIP RANGE

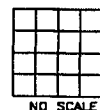
OFFICE FILE NO. _____



CORNERS TO BE INDEXED

CORNER SECTION TOWNSHIP RANGE

OFFICE FILE NO. _____



PREVIOUSLY RECORDED IN BOOK _____, PAGE _____
MONUMENT DESCRIPTION AND HOW ESTABLISHED _____

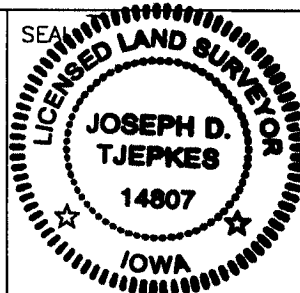
PREVIOUSLY RECORDED IN BOOK _____, PAGE _____
MONUMENT DESCRIPTION AND HOW ESTABLISHED _____

I hereby declare that this plat, survey or report was made by me or under my direct personal supervision and that I am a duly registered Land Surveyor under the laws of the State of Iowa.

Signed: _____

Joseph D. Tjepkes 8.07.01

Joseph D. Tjepkes L.S. Iowa Reg. No. 14807
My Registration Renewal Date is December 31, 2002



J.D. TJEPKES LS 14807
JONES COUNTY
ENGINEER'S OFFICE

19501 HWY. 64,
ANAMOSA, IOWA,
52205 (319)462-3785

2001 2742

FILED
RECORDERS OFFICE
JONES COUNTY IOWA

01 AUG -6 AM 8:25

MARIE KRUTZFIELD
RECORDER NO FEE

J.D. Tjepkes, LS. JONES COUNTY ENGINEER'S OFFICE, 19501 HWY. 64, ANAMOSA, IOWA, 52205 (319)462-3785

UNITED STATES PUBLIC LAND SURVEY CORNER CERTIFICATE

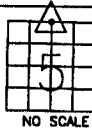
LAND SURVEY MONUMENTS SITUATED IN SECTION 5, TOWNSHIP 82
NORTH, RANGE 2 WEST OF THE 5TH P.M., CEDAR COUNTY, IOWA

CORNERS TO BE INDEXED

CORNER SECTION TOWNSHIP RANGE
N-1/4 5 82N 2W

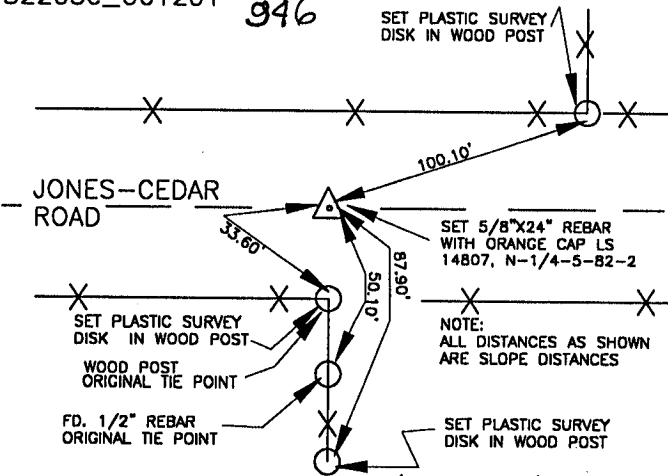
OFFICE FILE NO.
82205c_061201

946



NO SCALE

SET PLASTIC SURVEY
DISK IN WOOD POST



SET 5/8"x24" REBAR
WITH ORANGE CAP LS
14807, N-1/4-5-82-2

NOTE:
ALL DISTANCES AS SHOWN
ARE SLOPE DISTANCES

SET PLASTIC SURVEY
DISK IN WOOD POST

WOOD POST
ORIGINAL TIE POINT

FD. 1/2" REBAR
ORIGINAL TIE POINT

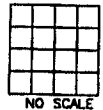
SET PLASTIC SURVEY
DISK IN WOOD POST

PREVIOUSLY RECORDED IN BOOK N/A, PAGE N/A
MONUMENT DESCRIPTION AND HOW ESTABLISHED SET 5/8"x
24" REBAR WITH ORANGE CAP LS 14807-PER CEDAR COUNTY
ENGINEER'S RECORD TIES-0.4' BELOW ROAD SURFACE. SET
ADDITIONAL REFERENCE POINTS AND TIED OUT AS INDICATED.
NORTH QUARTER CORNER 5-82-2, CEDAR COUNTY, IOWA

CORNERS TO BE INDEXED

CORNER SECTION TOWNSHIP RANGE

OFFICE FILE NO.



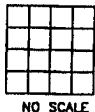
NO SCALE

PREVIOUSLY RECORDED IN BOOK _____, PAGE _____
MONUMENT DESCRIPTION AND HOW ESTABLISHED _____

CORNERS TO BE INDEXED

CORNER SECTION TOWNSHIP RANGE

OFFICE FILE NO.

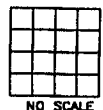


NO SCALE

CORNERS TO BE INDEXED

CORNER SECTION TOWNSHIP RANGE

OFFICE FILE NO.



NO SCALE

PREVIOUSLY RECORDED IN BOOK _____, PAGE _____
MONUMENT DESCRIPTION AND HOW ESTABLISHED _____

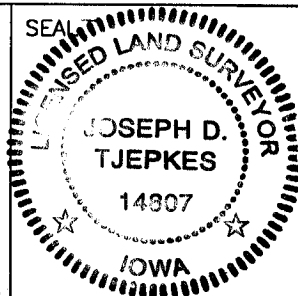
PREVIOUSLY RECORDED IN BOOK _____, PAGE _____
MONUMENT DESCRIPTION AND HOW ESTABLISHED _____

I hereby declare that this plat, survey or report was made by me or under my direct personal supervision and that I am a duly registered Land Surveyor under the laws of the State of Iowa.

Signed:

Joseph D. Tjepkes 8-26-01

Joseph D. Tjepkes L.S. Iowa Reg. No. 14807
My Registration Renewal Date is December 31, 2002



J.D. Tjepkes LS 14807
JONES COUNTY
ENGINEER'S OFFICE

19501 HWY. 64,
ANAMOSA, IOWA,
52205 (319)462-3785