

2005 4530

FILED
RECORDERS OFFICE
JONES COUNTY IOWA

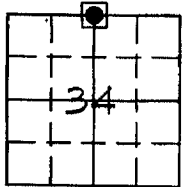
05 DEC 16 AM 11:42

MARIE KRUTZFIELD
RECORDER 7.00 pd

HALE

Prepared by: Richard Kordick, P.E., L.S., 120 East Main, Suite D, Anamosa, Iowa 52205 (319)462-4498

U.S. PUBLIC LAND SURVEY CORNER CERTIFICATE

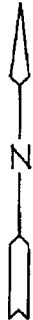


34-83N-2W
Jones County
HALE Township

Found cut "X" at
Sta. 220+43.35
(formerly used as the
N 1/4 Corner,
Section 34-83-2)

Found nail in top
of end post

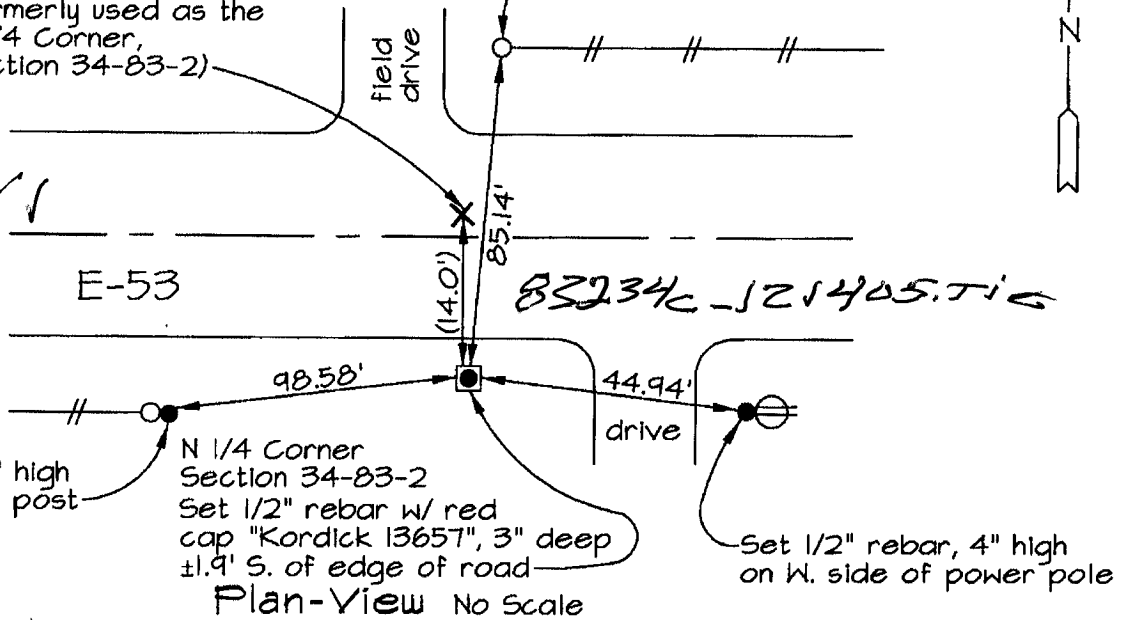
field
drive



1776

E-53

83234c-121405.TIG



Set 1/2" rebar, 4" high
on W. side of end post

N 1/4 Corner
Section 34-83-2
Set 1/2" rebar w/ red
cap "Kordick 13657", 3" deep
±1.9' S. of edge of road

Set 1/2" rebar, 4" high
on W. side of power pole

Plan-View No Scale

Section corner location: N 1/4 Corner, Section 34-83-2

Reason for corner tie:

- A) There is no certificate for the corner on file with the recorder.
- B) Corner position differs from previously recorded certificate recorded in book , page
- C) Corner monument was replaced or modified.
- D) Reference ties in previously recorded certificate recorded in book , page are incorrect or missing.

Research at the recorder's office, auditor's office, and engineer's office revealed the following: A plat in Recorder's Plat Bk. M - Pg. 88 stated "N 1/4 Corner, Section 34-83-2, set X via county ties 1.2' N of Sta. 220+43." This cut "X" was set at the P.I. Sta. 220+43.35 location and is NOT the N 1/4 Corner as it was incorrectly used in this plat. Easements for Public highway in Recorder's Bk. 120 - Pg. 315, Bk. 175 - Pg. 59, and Bk. 175 - Pg. 91 called for Station 220+43.35 being 14' north of the N 1/4 Corner of Section 34.

Field search performed was as follows:
Field search was performed with a metal detector, excavation and probing.

Monument found or set:
A 1/2" rebar with red cap "Kordick 13657" was set, 3" deep, 14' south of the found cut "X", P.I. Sta. 220+43.35.



I hereby certify that this land surveying document was prepared and the related survey work was performed by me or under my direct personal supervision and that I am a duly licensed Land Surveyor under the laws of the State of Iowa.

Richard M. Kordick 12/14/05

LEGEND:

- Section Corner as noted
- Power Pole
- Section line